

Notice of upcoming works near to Manor Drive, Coleshill

HS2-BBV-26-2176

Location

Near to Manor Drive, Coleshill
What3Words: ///dance.skin.robot

Duration

Monday 22 June to Friday 31 July 2026

Our working hours will be Monday to Friday, 8am to 6pm and 8am to 1pm on Saturdays. No traffic management will be in place during these works nor will works be taking place on the newly aligned Manor Drive.

What we are doing

Installation of large machinery comprising a 750-tonne crane to remove the 'Bailey Bridge 2', shown in the map below, along with the removal of concrete foundations.

What to expect

- Noise from our plant and machinery
- On-site mitigation
- Our workforce may be on-site up to one hour before and after to set up and secure our equipment.

We are committed to keeping you informed about work on HS2. This includes ensuring you know what to expect and when to expect it, as well as how we can help you. Should you have any questions or concerns about our works you can contact us by:



Freephone **08081 434 434**



Minicom **08081 456 472**



Email **HS2enquiries@hs2.org.uk**



Writing to **FREEPOST
HS2 Community Engagement**

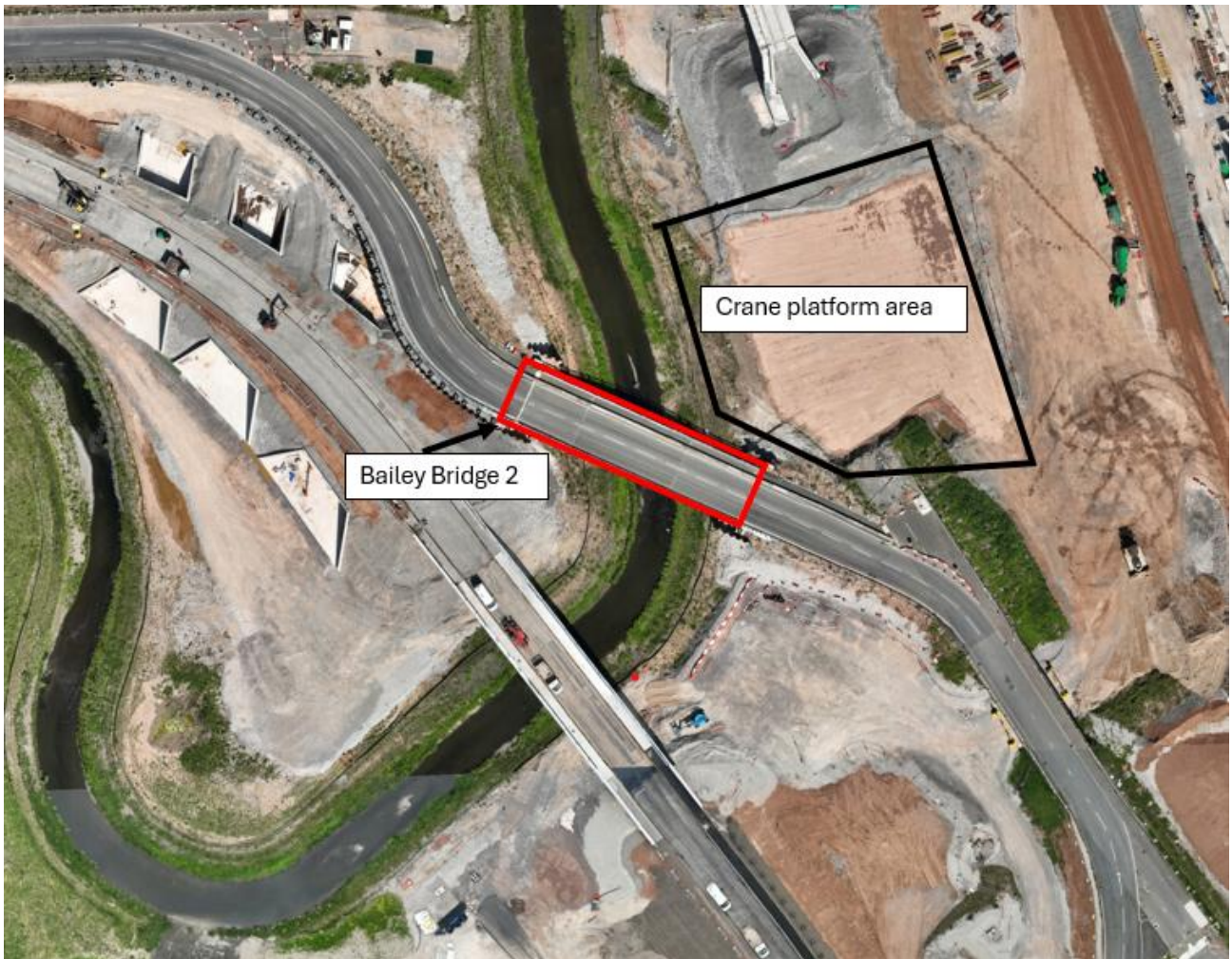


Website **www.hs2.org.uk**

Keep up to date with what is happening in your local area at **www.hs2.org.uk/in-your-area/in-your-area-map/**

Where we will be working

See below map detailing these works



Please contact us if you'd like a free copy of this document in large print, Braille, audio or 'easy read' format. You can also contact us for help and information in a different language.

Holding us to account

If you are unhappy for any reason, you can make a complaint by contacting our HS2 Helpdesk team. For more information, visit: www.hs2.org.uk/how-to-complain

We have an independent Residents' and Construction Commissioner who helps settle disputes and monitors the way in which we manage and respond to complaints about construction.

For more information visit: www.hs2.org.uk/independent-commissioner