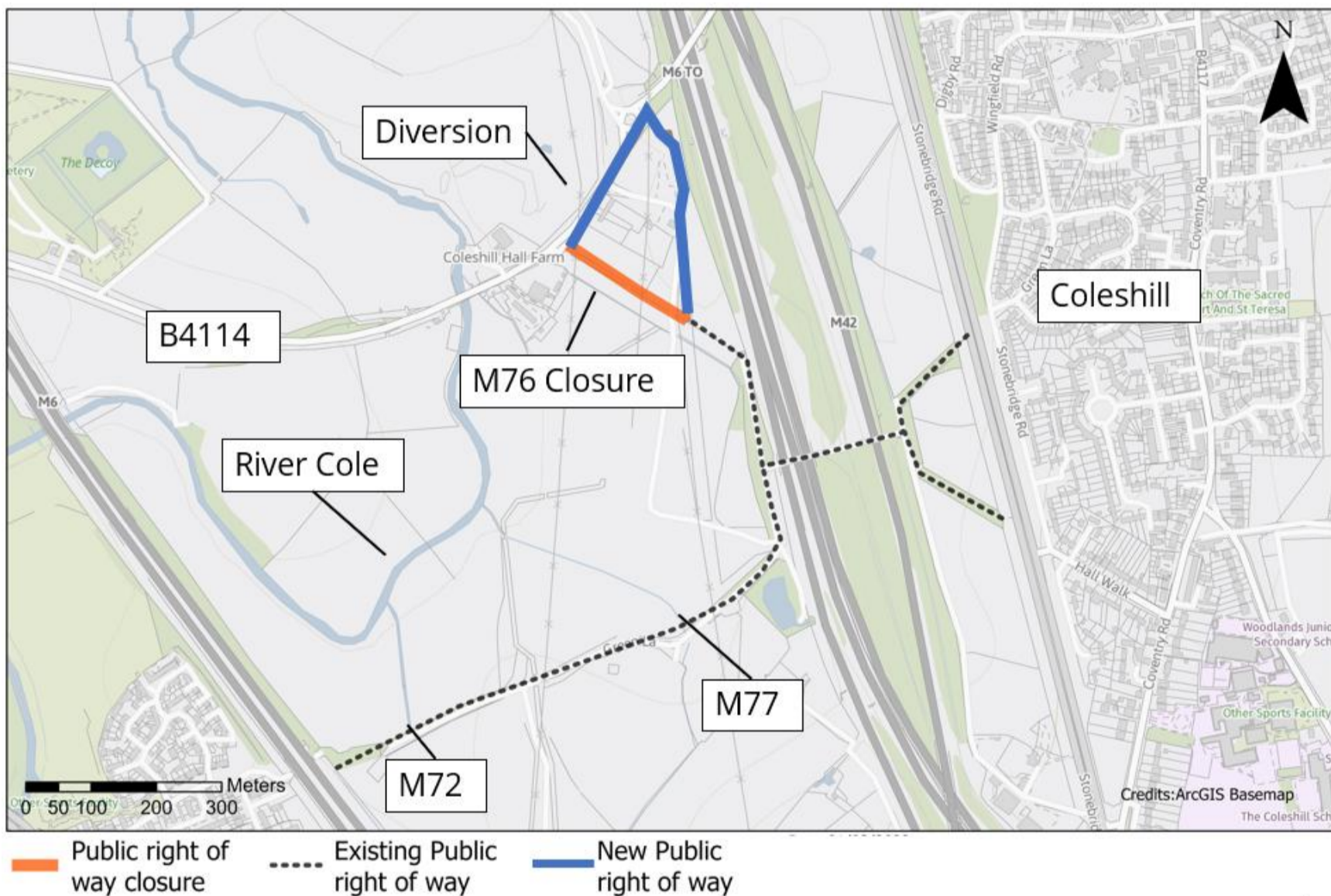


Reference number: HS2-BBV-26-2094

# UPDATED: M76 footpath closure and diversion 5 December 2022 to 31 December 2026

High Speed Two (HS2) is the new high speed railway for Britain.

Balfour Beatty Vinci (BBV) is working in partnership with HS2 Ltd to build the new railway in your area. A section of the M76 footpath will remain closed until December 2026. We have set out a temporary alternative route over our construction period. The section of the footpath that is closed is marked orange on the map below and the alternative route is marked in blue. Existing footpaths are marked in black.



The timeframes in this notification may be subject to change and consents. For the latest information, please refer to [www.hs2inwarwickshire.co.uk](http://www.hs2inwarwickshire.co.uk) and road signs.

If you have a question about HS2 or our works, please contact our HS2 Helpdesk team on 08081 434 434 or email [hs2enquiries@hs2.org.uk](mailto:hs2enquiries@hs2.org.uk)

