

# Notice of overnight canal and towpath closures, Oxford Canal, Wormleighton

**HS2-EKFB-26-2136**

## Location

Oxford Canal and towpath between bridge 127 and 128

## Duration

Three overnight closures from 9pm to 6am Monday 8 June, Tuesday 9 June and Wednesday 10 June.

If we are unable to complete these works due to poor weather or programme delay, we will use the below contingency dates:

9pm to 6am Monday 29 June, Tuesday 30 June and Wednesday 1 July.

## What we are doing

Removal of the temporary bridge over the canal and towpath.

## What to expect

- Closure of the canal and towpath overnight.
- Overnight activity in the area we are working, including lighting and use of cranes.

We are committed to keeping you informed about work on HS2. This includes ensuring you know what to expect and when to expect it, as well as how we can help you. Should you have any questions or concerns about our works you can contact us by:



Freephone **08081 434 434**



Minicom **08081 456 472**



Email **HS2enquiries@hs2.org.uk**



Writing to **FREEPOST  
HS2 Community Engagement**



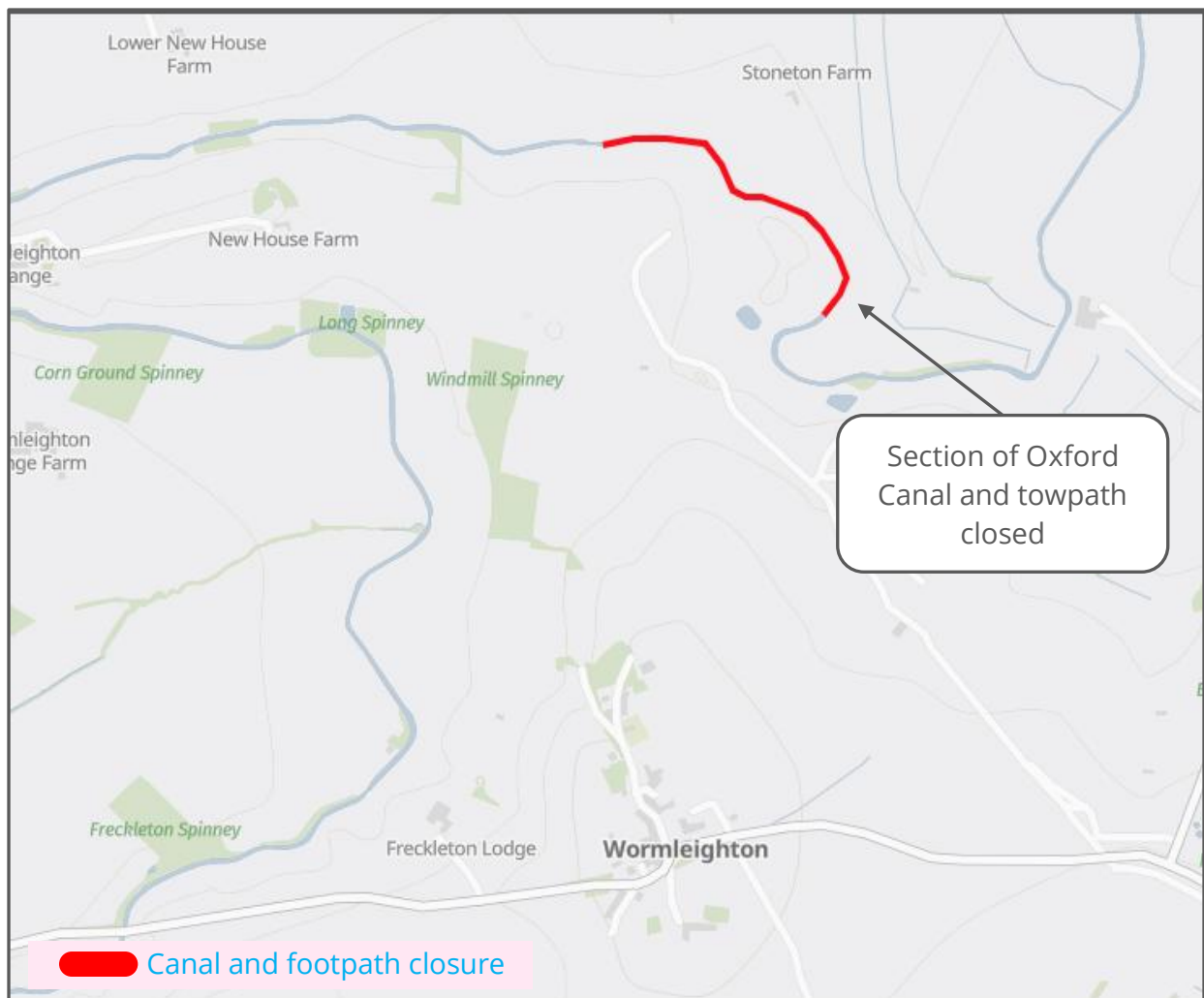
Website **www.hs2.org.uk**

Keep up to date with what is happening in your local area at

**[www.hs2.org.uk/in-your-area/  
in-your-area-map/](http://www.hs2.org.uk/in-your-area/in-your-area-map/)**

## Additional information

To work safely in this area, we need to close the canal and towpath between the bridges 127 and 128. There will be signs in advance for canal and towpath users.



Please contact us if you'd like a free copy of this document in large print, Braille, audio or 'easy read' format. You can also contact us for help and information in a different language.

### Holding us to account

If you are unhappy for any reason, you can make a complaint by contacting our HS2 Helpdesk team. For more information, visit: [www.hs2.org.uk/how-to-complain](http://www.hs2.org.uk/how-to-complain)

We have an independent Residents' and Construction Commissioner who helps settle disputes and monitors the way in which we manage and respond to complaints about construction.

For more information visit: [www.hs2.org.uk/independent-commissioner](http://www.hs2.org.uk/independent-commissioner)