

Contact our HS2 Helpdesk team on **08081 434 434**

HS2 in Hillingdon

Spring/Summer 2026

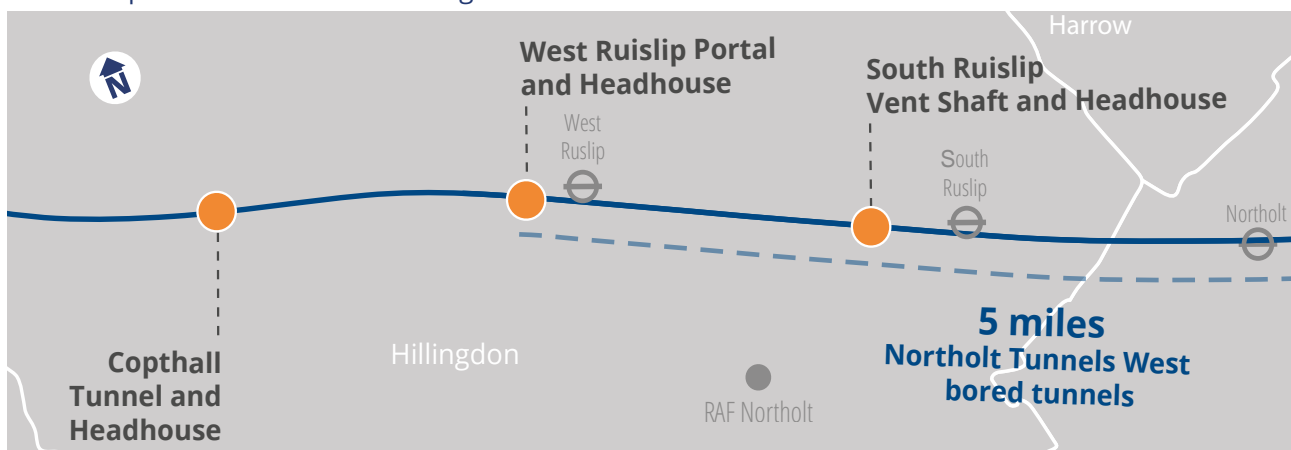
Welcome to the latest edition of our newsletter. This edition contains an update on construction developments as well as an overview of our investment in local community initiatives.

HS2 in Hillingdon Overview

HS2 is continuing to progress in the Hillingdon area. In 2025, we completed the Colne Valley viaduct and the majority of the Copthall tunnel.

We are now focusing on our work to build the West Ruislip headhouse and porous roof, demobilisation works within the Northolt tunnel and connections to the vent shafts. We have also begun installing the noise barriers between Copthall tunnel and West Ruislip Portal, and will begin our work to divert the Ickenham stream later this year.

Route map of our work sites in Hillingdon



West Ruislip Tunnel portal

Drop-in sessions at West Ruislip

Date: Every Monday and Wednesday

Time: 2-4pm

Location: Visitor Information Centre, to the right of the entrance to the HS2 West Ruislip Portal site

From the West Ruislip tube station entrance/exit, cross the road and turn right until you reach the 'West Ruislip Portal' sign

Our team are happy to answer any questions you may have.



Inside one of the Northolt tunnels

Construction Update

Tunnelling across the line of route

The Northolt tunnel is now complete between our West Ruislip Portal site in Hillingdon and Victoria Road Crossover Box in North Acton. At the West Ruislip Portal site, we are continuing with our demobilisation works 24 hours a day, 7 days a week. These include removing the tunnelling services from inside the tunnel, and removing the water treatment plant.



Mandeville Road vent shaft tunnel connection

We will also continue to build the emergency and maintenance walkways inside the tunnel until autumn 2026. These allow passengers to safely evacuate in the event of an emergency, as well as providing access for maintenance. Once these are complete, the next phase of works will be to install the fire protection doors between the cross passages, which are the short tunnels that connect the two running tunnels.

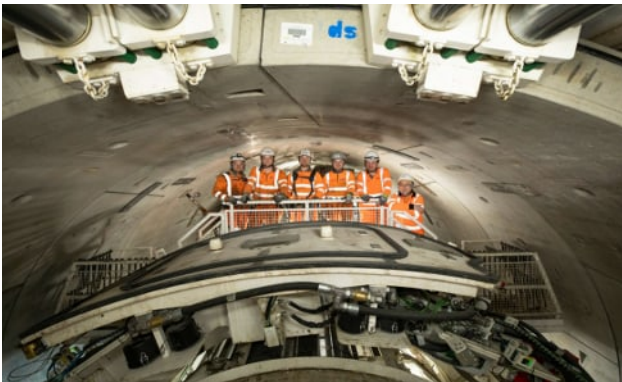
Works to connect the Northolt tunnel to the South Ruislip and Mandeville Road vent shaft sites have now been completed. The connection is essential for providing ventilation, emergency access and maintenance within the tunnel once the railway is operational.

As part of SCS' Decarbonising Concrete programme, we have successfully used calcined clay, processed from London Clay dug out from the Northolt Tunnel, as a sustainable alternative to cement. This is an industry first, and will assist us in achieving HS2's goal of net zero carbon emissions by 2035. You can read more about this innovation at <https://learninglegacy.hs2.org.uk/>

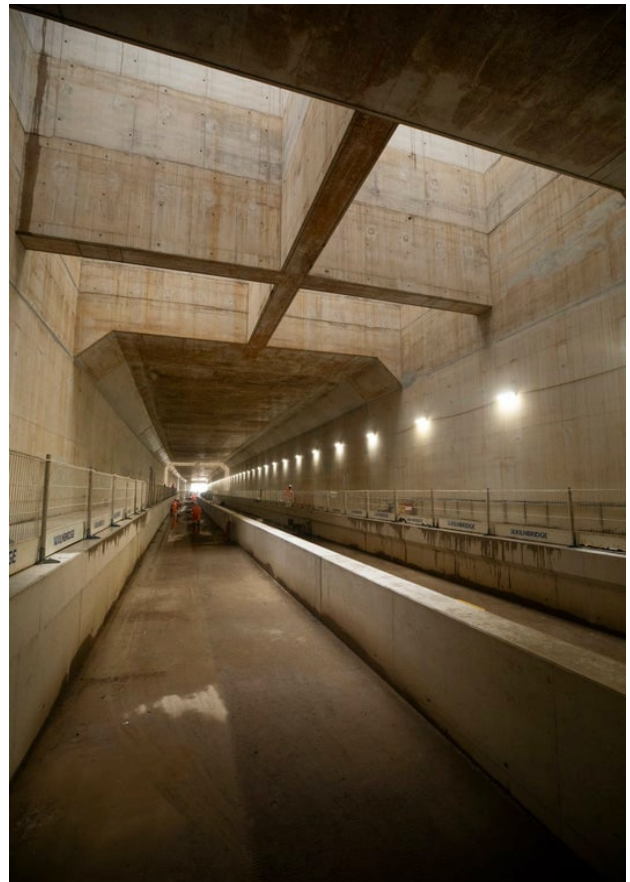
Following the completion of the Cophall tunnel in 2025, we marked another major milestone this year with the launch of the two tunnel boring machines, TBMs Karen and Madeleine, starting their passage from Old Oak Common towards Euston. The 4.5 mile twin-bore tunnel will take approximately 18 months to complete. If you are interested in keeping up to date on their progress, more information can be found [here](#).



HS2 CEO Mark Wild and Rail Minister Lord Peter Hendy at the launch of TBM Madeleine



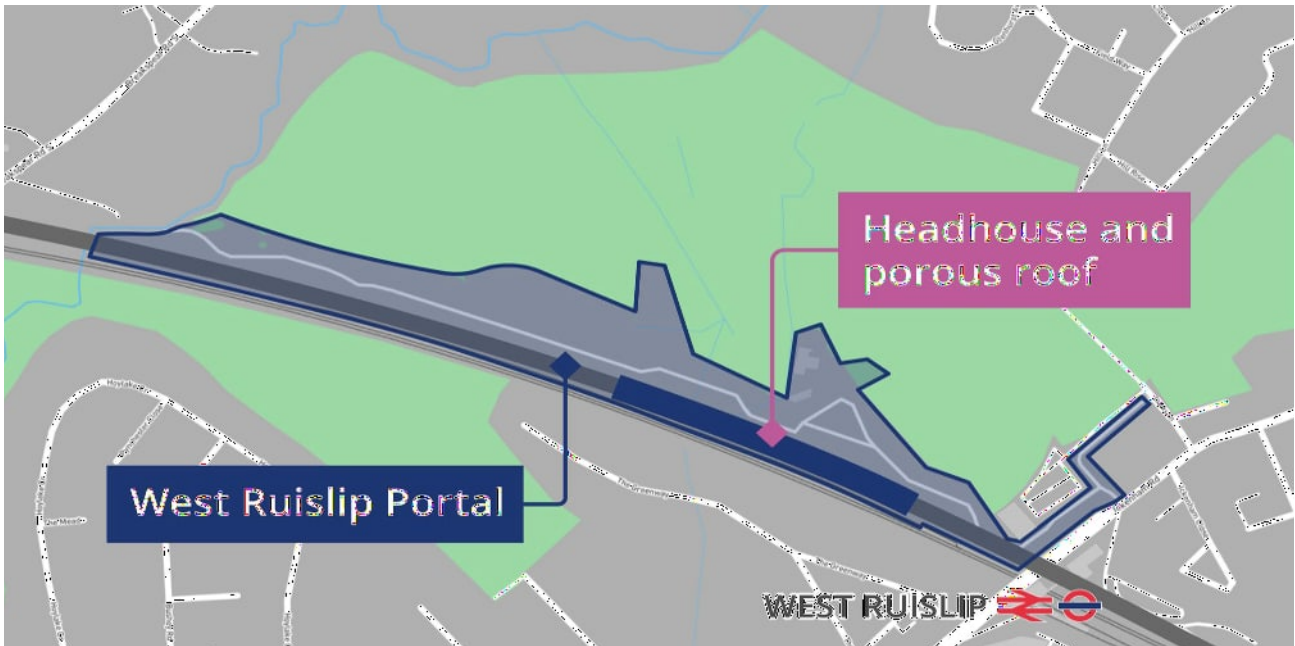
Tunnelling workers at TBM Madeleine launch



Inside the Cophall tunnel

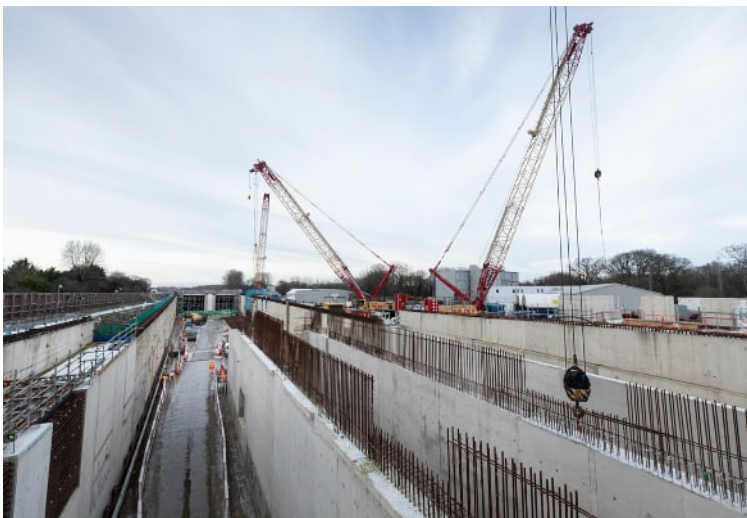
The Newsletter: have your say

We strive to make our newsletters informative, interesting and inclusive. We are always looking for ways to improve the content, so would welcome your feedback. If you have any views on the newsletter or if there are topics you would like to see covered in future editions, please contact us with your suggestions at: communitites@scsrailways.co.uk



West Ruislip Portal Headhouse and Porous Roof Construction

We are continuing with our work to build the headhouse and porous roof at West Ruislip.



West Ruislip portal progress

Throughout 2026, we will complete formwork and steel fixing activities. These are taking place Monday to Saturday, 24 hours a day, though we are limiting our noisiest works to daytime hours to reduce the impact on local residents.

You may be able to see the headhouse taking shape above the hoarding, where it will sit at nine metres above track level once complete. It has been designed to fit into the natural character of the area, with the metal and timber materials specifically selected to achieve this purpose. The headhouse will also have a green roof, and the area on top of the portal will be landscaped to further blend with the surrounding environment and enhance the visual appearance.

Installing Noise Barriers

We have now started installing the concrete noise barrier panels following completion of the piling. You should see these starting to take shape between the Copthall tunnel and West Ruislip Portal, where they will connect with the headhouse and porous roof.

The aim of the noise barriers is to reduce the noise of the train as experienced by residents. We will achieve this by containing, deflecting and absorbing the sounds that are produced by the train. We carried out multiple tests of the panels throughout 2025 to ensure they are fit for this purpose.



Images showing the piling and first concrete panels for the noise barriers



Ickenham Stream Diversion

We will soon begin our work to divert the Ickenham stream, as we previously did with the River Pinn. We will use a method known as pipe jacking, which is a way of installing underground without needing to dig trenches. It works by using hydraulic jacks to push pipes through the ground behind a shield. This allows us to excavate without disrupting the surface, similarly to how TBMs work.

This work is currently planned to start in June. The first phase of work will consist of installing sheet piles to stabilise the ground prior to pipe jacking, which is expected to begin in late 2026 or early 2027. We will keep you updated on start dates and progress via our community notices.

Once the diversion is complete, the Ickenham stream will pass through our site and underneath the Chiltern Line.

Please follow **this link** to sign up to our mailing list and receive regular updates about our works and the wider HS2 project. We also publish weekly map updates **here** outlining our ongoing impactful works in areas around Hillingdon.

Community Investment

Community & Environment and Business & Local Economy Funds

We continue to offer two funds which are available to local communities and businesses between the West Midlands and London, to help with the disruption caused by our construction work. These are the Community and Environment Fund (CEF) and the Business and Local Economy Fund (BLEF).

The CEF is designed to give communities the opportunity to share in the benefits of HS2. It is a distributed fund which communities can apply for, to help to support local projects that aim to benefit their local area.

The BLEF is designed to support local economies that may be disrupted by the construction of HS2. BLEF grants are for local business support organisations and local authorities to help support business activities in local communities.

To find out more, scan this QR code using your smart phone camera.



Brunel University students gain real-world insight through HS2 and SCS mentoring

HS2 and SCSJV have supported Brunel University civil engineering students through a mentoring programme, using the West Ruislip Portal, Copthall tunnel, and the Sustainable Placement areas as the basis for the students' work. The initiative gave students the opportunity to apply their learning to a live infrastructure project.

The students developed solutions across key areas including design, construction and project management. With practical guidance from HS2 and SCS mentors, they explored design options, construction challenges and the constraints that shape delivery on site.

The programme began in January and has now reached its final stage. Students presented their work on 29 April at Brunel University, marking the conclusion of several months of collaboration.

The collaboration offers a clear link between local education and a major infrastructure programme, helping students gain a more realistic understanding of the industry while supporting the development of future engineers.

Community Engagement

Drop-in Event at Ickenham Village Hall

We hosted our first public event of 2026 at Ickenham Village Hall on 26 February. It was attended by 43 visitors, alongside various representatives from HS2, the local council, and SCS and Align, who are the two contractors delivering HS2 in the Hillingdon area.

Members of the construction, environment and engagement teams were on hand to answer any questions that came up throughout the night. Feedback from the event was very positive, with praise given to the quality of information and the helpfulness of the team. The drone footage was a particular hit, with people enjoying seeing how the project has changed over the course of the past year.

Our next event will be held in June 2026. Please keep informed by regularly checking this link:

<http://www.hs2.org.uk/events/>



Images from our recent event



Keeping you informed

We are committed to keeping you informed about work on HS2. This includes ensuring you know what to expect and when to expect it, as well as how we can help.

Residents' and Construction Commissioner

The independent Residents' and Construction Commissioner oversees and monitors our **community engagement strategy**, making sure we fulfil our commitments to you.

The commissioner monitors the way we manage and respond to complaints about construction and advises members of the public how to make complaints.

The commissioner helps settle disputes involving individuals and organisations that we can't resolve. You can find the commissioner's report and our responses at:

www.gov.uk/government/collections/independent-hs2-commissioner

The commissioner can be contacted on:
hs2commissioner@dft.gov.uk

Property and compensation

You can find out all about HS2 and properties along the route by visiting:

www.gov.uk/government/collections/hs2-property

Find out if you're eligible for compensation at:

www.gov.uk/claim-compensation-if-affected-by-hs2

Holding us to account

If you are unhappy for any reason, you can make a complaint by contacting our HS2 Helpdesk team.

For more details on our complaints process, please visit our website:

www.hs2.org.uk/how-to-complain

Reference number: **HS2-SCS-26-2041**

High Speed Two (HS2) Limited, registered in England and Wales.

Registered office: Two Snowhill, Snow Hill Queensway, Birmingham B4 6GA.

Company registration number: 06791686. VAT registration number: 181 4312 3

Contact Us

Our HS2 Helpdesk team are available all day, every day. You can contact them by:

 Freephone **08081 434 434**

 Minicom **08081 456 472**

 Email hs2enquiries@hs2.org.uk

Write to:

**FREEPOST
HS2 Community Engagement**

Website www.hs2.org.uk

To keep up to date with what is happening in your local, visit:

www.HS2inyourarea.co.uk

Please contact us if you'd like a free copy of this document in large print, Braille, audio or easy read. You can also contact us for help and information in a different language.

We are committed to protecting personal information. If you would like to know more about how we use your personal information, please see our privacy notice (www.gov.uk/government/publications/high-speed-two-ltd-privacy-notice)