

# Notice of traffic management on Attleboro Lane

## HS2-BBV-26-2135

### Location

Attleboro Lane, Water Orton

### Duration

**Thursday 4 June to Tuesday 30 June 2026.**

The traffic management will be in place from 8am to 6pm each weekday.

### What we are doing

Traffic management will be in place along sections of the overbridge, to install the permanent vehicle restraint system (VRS)

### What to expect

- A lane closure will be in place using 'Stop & Go' traffic signal control and/or temporary traffic lights to manage traffic using the overbridge.
- Low level of noise from machinery and minor disruption on journeys.
- Access will be maintained for residents and deliveries throughout the closure.
- Access will be maintained for cyclists and pedestrians throughout the closure.

We are committed to keeping you informed about work on HS2. This includes ensuring you know what to expect and when to expect it, as well as how we can help you. Should you have any questions or concerns about our works you can contact us by:



Freephone **08081 434 434**



Minicom **08081 456 472**



Email **HS2enquiries@hs2.org.uk**



Writing to **FREEPOST HS2 Community Engagement**

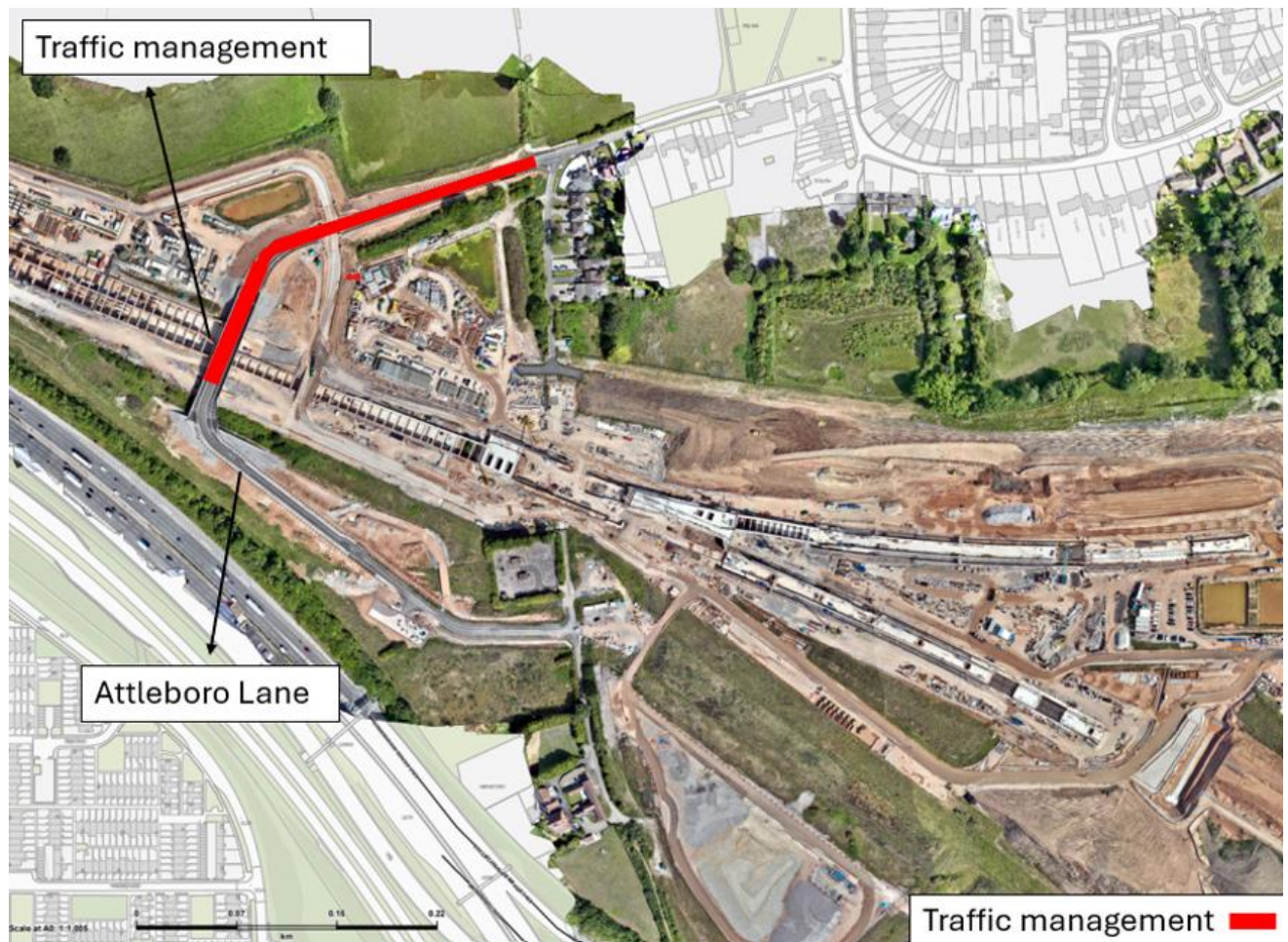


Website **www.hs2.org.uk**

Keep up to date with what is happening in your local area at **www.hs2.org.uk/in-your-area/in-your-area-map/**

## Additional information

Please see the below map of where we will be working



Please contact us if you'd like a free copy of this document in large print, Braille, audio or 'easy read' format. You can also contact us for help and information in a different language.

### Holding us to account

If you are unhappy for any reason, you can make a complaint by contacting our HS2 Helpdesk team. For more information, visit: [www.hs2.org.uk/how-to-complain](http://www.hs2.org.uk/how-to-complain)

We have an independent Residents' and Construction Commissioner who helps settle disputes and monitors the way in which we manage and respond to complaints about construction.

For more information visit: [www.hs2.org.uk/independent-commissioner](http://www.hs2.org.uk/independent-commissioner)