

Contact our HS2 Helpdesk team on **08081 434 434**

# HS2 Update

North Chilterns Area | Spring 2026

**EKFB**  
Working in  
partnership with **HS2**

High Speed Two (HS2) is the new high-speed railway for Britain. Should you have any questions or enquiries regarding our works, please contact the Helpdesk details of which can be found in this newsletter. We will be keeping our local website <http://www.hs2inbucksandox.co.uk> up to date with information on our works in the local area

## What's inside this newsletter

In this newsletter edition, we take a look back at recent progress on site, outline upcoming construction activity, and share the latest updates from across the project.

- Construction updates
  - Wendover Dean viaduct
  - Small Dean viaduct
  - Wendover green tunnel
- Traffic management requirements
- What's coming up
  - Small Dean viaduct Easter works
  - Spring chamber installation
  - Rocky Lane underbridge parapet installation
- Bowood Lane update
- Aerial footage
- Community and Environment Funding
- Progress in photos



## Join us at our community events...

During the year we run specific community events and drop-in sessions in our Mobile Visitor Centre and local village halls.

Mobile Visitor Centre:

**Date:** 28 April

**Time:** 12pm to 3pm

**Location:** World's End Garden Centre, Wendover, HP22 6BD

To find out where your next local event is taking place, please visit on the HS2 website for the latest information.

[www.hs2.org.uk/events](http://www.hs2.org.uk/events)

# Construction updates



## Wendover Dean viaduct

In 2025, permanent bearings were installed on the Wendover Dean viaduct, allowing the steel viaduct to be lowered into its final position.

Over the past year, we have made strong and steady progress on constructing the lower deck. Concrete was poured in a managed staged sequence across the precast planks, forming the structural base of the viaduct.

Top deck concrete pours are underway and will continue through spring. Ten of the planned nineteen pours have already been completed, with a further nine scheduled to take place over the coming months. Earthworks recommenced in February 2026 at Wendover Dean north embankment and will continue through until November 2026.



Wendover Dean viaduct, February 2026

## Small Dean viaduct

Since November 2025, we have been installing parapets on the Small Dean viaduct. During the Christmas period, we worked 24/7 during a railway Possession to install parapets over the Chiltern line.

By the end of March, over 90% of the viaduct parapets were installed, with completion expected by the end of April.

For a behind-the-scenes look at the overnight works on the Small Dean viaduct, our latest video captures footage during the parapet lifting operations. Watch the video by clicking [here](#) or by scanning the QR code on the right.



Small Dean viaduct, March 2026



## Construction updates



### Wendover green tunnel

In 12 months, we have installed more than 1,300 tunnel segments marking a significant milestone as we surge pass the halfway point, with 55% of all pre-cast segments in place.

Between January and February, we completed works on the Wendover bypass to create the new site access. This will support continued deliveries, movement of vehicles and materials while excavation and portal works are underway at the Wendover north cutting and we build over where our old site access was located.



Wendover green tunnel construction, February 2026

## Traffic management requirements



Over the next few months we will need to implement temporary traffic management to ensure that we can complete all necessary construction activities safely for both road users and our workforce.

Below you can see a summary of what to expect in your area, further information will be communicated via email and the HS2 website ([www.hs2.org.uk/route-map](http://www.hs2.org.uk/route-map)) and you can also come and see us at our events.

Location	Works	Traffic management
Rocky Lane	Parapet installation	Two week road closure (July – August 2026)
Ellesborough Road	Bridge inspection	Overnight road closure (April 2026)
Nash Lee Road	Bridge inspection	Overnight road closure (May 2026)
Bowood Lane	Overbridge construction	Road closure until mid-2027

## What's coming up...

### Small Dean Viaduct

Over the Easter weekend (3 – 6 April), we will have a possession on the Chiltern Railway line to continue with backfilling works to the pier closest to the railway. After Easter, the viaduct deck will be used to transport materials over the A413. The conveyor over the A413 London Road will be removed during the summer, which will require traffic management on the road.



Small Dean viaduct, March 2026

### Spring chamber installation

In March, we hosted a community drop-in at the Wendover community library ahead of the spring chamber construction starting. The chamber is essential to maintaining groundwater levels and flows around our north cutting and green tunnel works. After gaining planning approval, access to the site will now be via Nash Lee End, avoiding the use of South Street and Dobbins Lane.

The construction period is expected to last between 10-12 weeks, and is scheduled to begin in mid-April, subject to weather conditions and hibernation season ending.



Spring chamber access route map from the Wendover green tunnel compound

### Rocky Lane underbridge parapet installation

This summer, we will be installing the parapets on the Rocky Lane underbridge. To enable these works, a road closure of Rocky Lane for a period of up to two weeks is required to install the parapets safely. For road users coming from The Lee and Chartridge to access the A413, the diversion route runs through Ballinger Road to Frith Hill and then Great Missenden. An advance works notice with full details of the works will be shared closer to the time of the works.



Rocky Lane underbridge and permanent realignment

## Bowood Lane update

Whilst we have been constructing the overbridge on Bowood Lane, vehicle access on the road has been restricted. In 2025, the overbridge was opened for Public Right of Way use.

We will be continuing with excavation and earthworks in the area before construction is completed. There will be works to bring the road into use to tie-in the bridge to the existing lane. We aim to re-open Bowood Lane in 2027, but it will remain a single-track road with passing bays.



Bowood Lane overbridge, March 2026

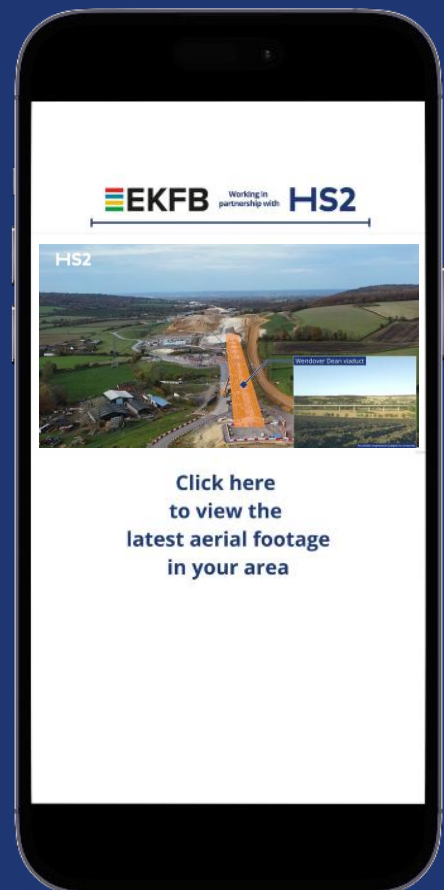
## EKFB aerial footage

One of the best ways to see the progress we are making on site is from our aerial footage. If you scan the QR code below, it will allow you to view the latest of HS2 works in your area.

The footage gives an annotated overview of where different structures will be found once HS2 is complete, along with an update of how the landscaping is currently looking.



Scan me or click [here!](#)



## HS2 Community and Environment Funding

### Wendover Parish Council – Hampden Pond restoration

Wendover Parish Council has been awarded additional funding to deliver an environmental improvement project at Hampden Pond. The work will restore the ecological health of this local space by removing fallen trees from the water and surrounding banks and repairing an eroded section of the pond edge. As part of the long-term sustainability of the site, a new borehole has been installed to provide a consistent water source, helping to stabilise water levels and protect water quality throughout the year.

### Halton Parish Council – Halton village hall heritage repairs

Halton Parish Council have been awarded £100,000 towards their latest community project. The funds will go towards delivering essential heritage repairs, including restoration of the glass windows in Halton village hall, a popular community facility in the heart of village.



Working in  
partnership with

# HS2

### Are you a local community group or business that's looking for support from HS2?

The Community and Environment (CEF) and the Business and Local Economy Fund (BLEF) schemes will provide up to £40m of funding throughout the construction of HS2, supporting community-led projects.

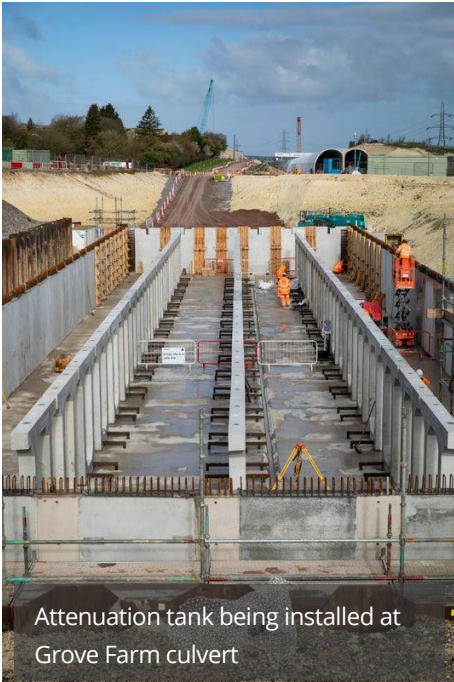
The Funds also support initiatives that bring benefits to local communities, such as the provision of new community facilities or support for local heritage and culture.

You can find more information about eligibility and how to apply on the HS2 website. Alternatively, you can get in touch with your local Community Engagement Team to find out more information and support.

[www.hs2.org.uk/in-your-area/community-funding/](http://www.hs2.org.uk/in-your-area/community-funding/)



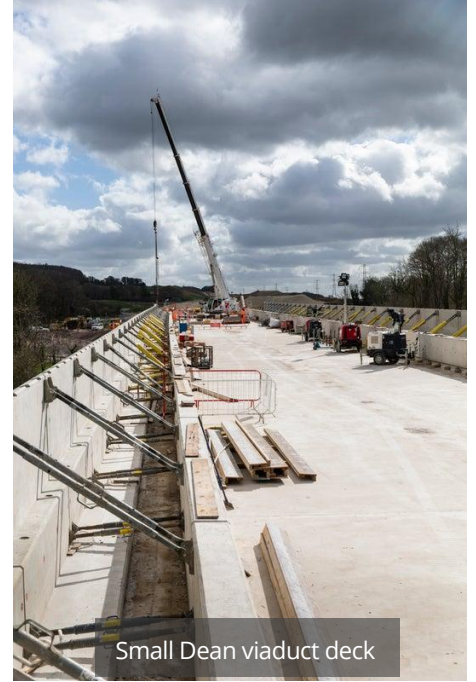
# Progress in pictures



Attenuation tank being installed at Grove Farm culvert



Inside the Wendover green tunnel



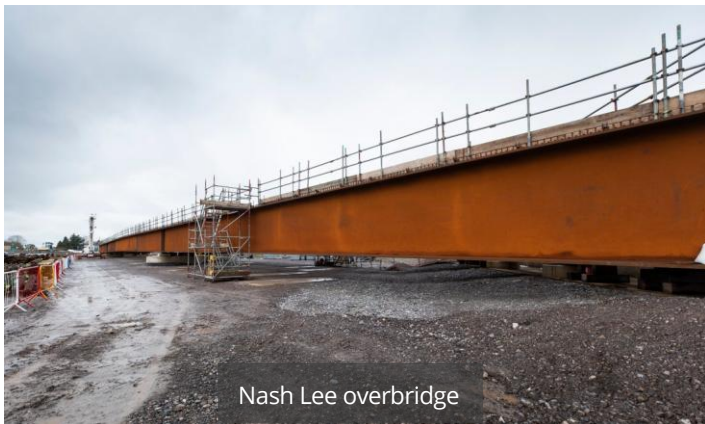
Small Dean viaduct deck



Grove Farm underbridge



Impact walls under construction at ELL/20 footbridge



Nash Lee overbridge



TLE/2 overbridge

# Keeping you informed

We are committed to keeping you informed about work on HS2. This includes making sure you know what to expect and when to expect it, as well as how we can help.

## Residents' and Construction Commissioner

The independent Residents' and Construction Commissioner oversees and monitors our **community engagement strategy**, making sure we fulfil our commitments to you.

The commissioner monitors the way we manage and respond to complaints about construction and advises members of the public how to make complaints.

The commissioner helps settle disputes involving individuals and organisations that we can't resolve.

You can find the commissioner's report and our responses at:

[www.gov.uk/government/collections/independent-hs2-commissioner](http://www.gov.uk/government/collections/independent-hs2-commissioner)

The commissioner can be contacted on:  
[hs2commissioner@dft.gov.uk](mailto:hs2commissioner@dft.gov.uk)

## Property and compensation

You can find out all about HS2 and properties along the route by visiting:

[www.gov.uk/government/collections/hs2-property](http://www.gov.uk/government/collections/hs2-property)

Find out if you're eligible for compensation at:

[www.gov.uk/claim-compensation-if-affected-by-hs2](http://www.gov.uk/claim-compensation-if-affected-by-hs2)

## Holding us to account

If you are unhappy for any reason, you can make a complaint by contacting our HS2 Helpdesk team.

For more details on our complaints process, please visit our website:  
[www.hs2.org.uk/contact-us/how-to-complain](http://www.hs2.org.uk/contact-us/how-to-complain)

**Reference number: HS2-EKFB-26-1716**

## Contact us

Our HS2 Helpdesk team are available all day, every day. You can contact them by:

 Freephone **08081 434 434**

 Minicom **08081 456 472**

 Email [hs2enquiries@hs2.org.uk](mailto:hs2enquiries@hs2.org.uk)

Write to:

**FREEPOST**  
**HS2 Community Engagement**

Website [www.hs2.org.uk](http://www.hs2.org.uk)

To keep up to date with what is happening in your area, visit:

[www.hs2inyourarea.co.uk](http://www.hs2inyourarea.co.uk)

**Please contact us if you'd like a free copy of this document in large print, Braille, audio or easy read. You can also contact us for help and information in a different language.**

We are committed to protecting personal information. If you would like to know more about how we use your personal information, please see our privacy notice ([www.gov.uk/government/publications/high-speed-two-ltd-privacy-notice](http://www.gov.uk/government/publications/high-speed-two-ltd-privacy-notice))