

Surveys in Bottom House Farm Lane, Chalfont St Giles, Buckinghamshire

HS2-ALIGN-26-1991

Location

Highways, land and buildings adjacent to Bottom House Farm Lane, near Chalfont St Giles, Buckinghamshire

Duration

Late April 2026 through to October 2026

What we are doing

We will be carrying out surveys to provide information about topography, highways condition, drainage, and ecological conditions (including species and habitats). This is to inform our design and planning for the removal of the temporary access road between the A413 Amersham Road and the Chalfont St Giles ventilation shaft site.

What to expect

Contractors and surveyors will be visible in and around Bottom House Farm Lane, the River Misbourne crossing, and neighbouring land in coming weeks with surveying equipment. Should our surveyors require access to, or through private property we will contact landowners and residents in advance.

We are committed to keeping you informed about work on HS2. This includes ensuring you know what to expect and when to expect it, as well as how we can help you. Should you have any questions or concerns about our works you can contact us by:



Freephone **08081 434 434**



Minicom **08081 456 472**



Email **HS2enquiries@hs2.org.uk**



Writing to **FREEPOST
HS2 Community Engagement**



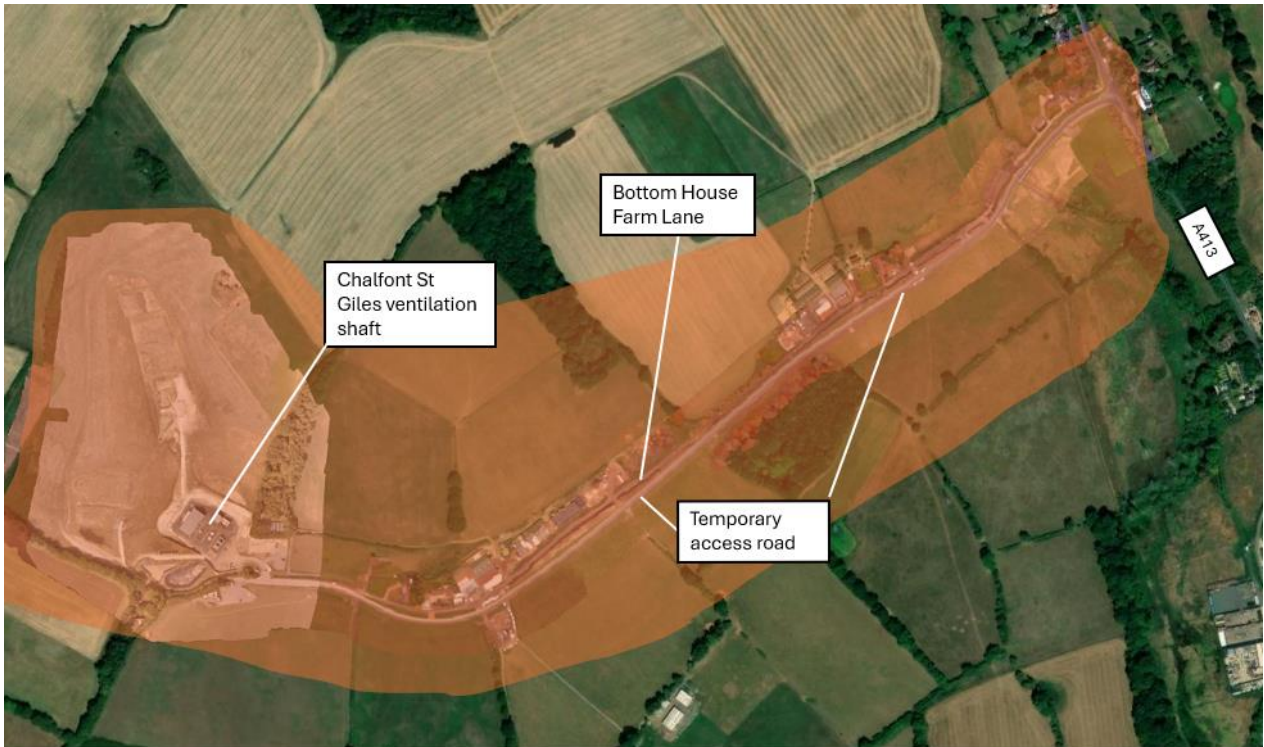
Website **www.hs2.org.uk**

Keep up to date with what is happening in your local area at

**[www.hs2.org.uk/in-your-area/
in-your-area-map/](http://www.hs2.org.uk/in-your-area/in-your-area-map/)**

Where we will be working

The map below shows the areas we will be surveying in orange.



Please contact us if you'd like a free copy of this document in large print, Braille, audio or 'easy read' format. You can also contact us for help and information in a different language.

Holding us to account

If you are unhappy for any reason, you can make a complaint by contacting our HS2 Helpdesk team. For more information, visit: www.hs2.org.uk/how-to-complain

We have an independent Residents' and Construction Commissioner who helps settle disputes and monitors the way in which we manage and respond to complaints about construction.

For more information visit: www.hs2.org.uk/independent-commissioner