

Notice of temporary contraflow, northbound carriageway, A452 Kenilworth Road Solihull

HS2-BBV-26-1884

Location

A452 Kenilworth Road, Solihull

Duration

From **Tuesday 19 May 2026 to Sunday 28 June 2026**

What we are doing

We will be installing a contraflow onto the northbound carriageway of the A452. The contraflow will be in place for **six weeks** so we can complete highway realignment works, build the new roundabout and temporary access points to Mercote Mill Farm and Marsh Farm 'The Nook' off the southbound carriageway.

What to expect

A 30mph speed restriction will be in place. Motorists will experience disruption to travel times. Access points to businesses and properties along the northbound carriageway will remain open. Access points to Mercote Mill Farm and Marsh Farm 'The Nook' will be fully signposted on the A452. A small number of temporary closures will be required as we switch the traffic into contraflow.

We are committed to keeping you informed about work on HS2. This includes ensuring you know what to expect and when to expect it, as well as how we can help you. Should you have any questions or concerns about our works you can contact us by:



Freephone **08081 434 434**



Minicom **08081 456 472**



Email **HS2enquiries@hs2.org.uk**



Writing to **FREEPOST HS2 Community Engagement**



Website **www.hs2.org.uk**

Keep up to date with what is happening in your local area at

www.hs2.org.uk/in-your-area/in-your-area-map/

Additional information

When the works are complete, we will need to install a contraflow on the new southbound carriageway starting on **Monday 29 June 2026** so we can build access points for the Lincoln Farm Truck Stop and properties on Marsh Lane. The contraflow will be in place for approximately nine months until we open the new road in **summer 2027**. A small number of temporary closures will be required as we switch the traffic into contraflow. Further details will be provided once confirmed.

Where we will be working

Map showing the contraflow on the northbound carriageway



- Southbound Lane Closure
- -> Northbound Lane Contraflow

Date:02/04/2026

Scale: 1:15,000

A452 Kenilworth Road, Solihull INC000005013140 CV BO

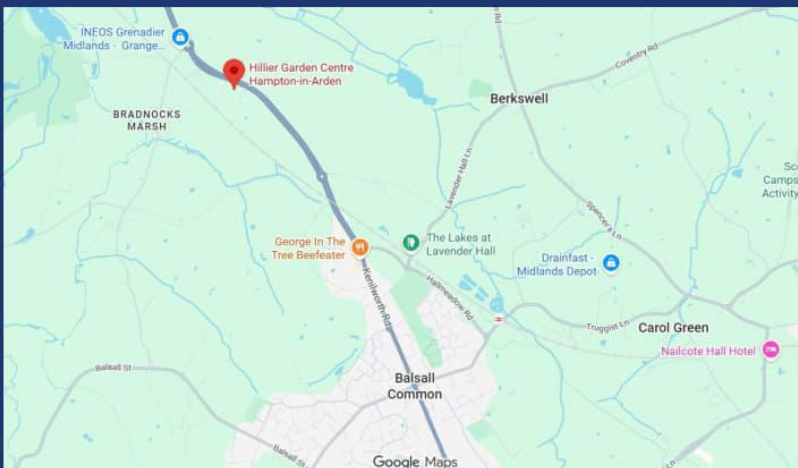
HS2 Drop-in events in your area



We would like to invite you to two HS2 drop-in events in the Solihull area

High Speed Two (HS2) is the new high speed railway for Britain. HS2 and Balfour Beatty VINCI (BBV) will be hosting informal drop-in events to discuss:

- The permanent realignment of the **A452 Kenilworth Road**, in Solihull
- The forthcoming installation of a contraflow on the northbound carriageway



Come and talk to us on **Thursday 30 April**, between **12.30am** and **5pm**.

Drop-in session will be held at the **Hillier Garden Centre**

Address: **Hillier Garden Centre,
Kenilworth Road,
Solihull B92 0LP**

We look forward to meeting you.

Reference number: **HS2-BBV-26-1983**

Freephone **08081 434 434**

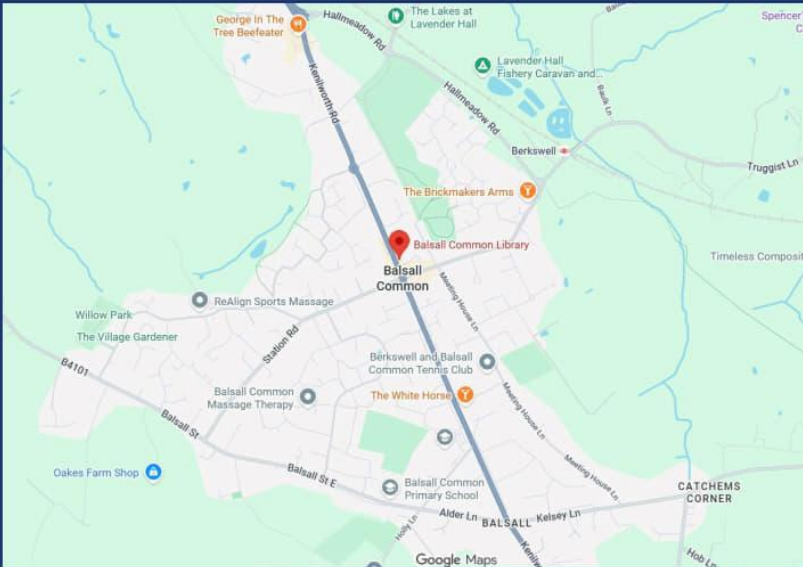
Minicom **08081 456 472**

Email **hs2enquiries@hs2.org.uk**

Website **www.hs2.org.uk**

To keep up to date with what is happening in your local area, visit:

www.hs2inyourarea.co.uk



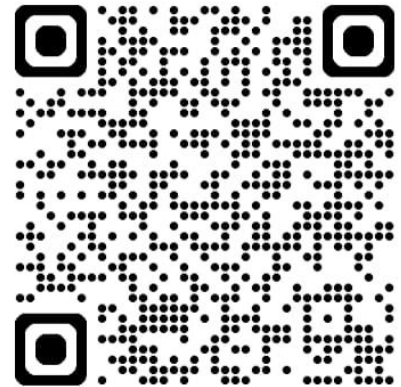
Come and talk to us on **Tuesday 5 May**, between **10.30am** and **12.30pm**.

Drop-in session will be held at the **Balsall Common Library**

Address: **Balsall Common Library,**
283 Kenilworth Road, CV7 7EL

We look forward to meeting you.

Reference number: **HS2-BBV-26-1982**



Freephone **08081 434 434**

Minicom **08081 456 472**

Email **hs2enquiries@hs2.org.uk**

Website **www.hs2.org.uk**

To keep up to date with what is happening in your local area, visit:

www.hs2inyourarea.co.uk

Please contact us if you'd like a free copy of this document in large print, Braille, audio or 'easy read' format. You can also contact us for help and information in a different language.

Holding us to account

If you are unhappy for any reason, you can make a complaint by contacting our HS2 Helpdesk team. For more information, visit: **www.hs2.org.uk/how-to-complain**

We have an independent Residents' and Construction Commissioner who helps settle disputes and monitors the way in which we manage and respond to complaints about construction.

For more information visit: **www.hs2.org.uk/independent-commissioner**