

Contact our HS2 Helpdesk team on **08081 434 434**

Old Oak Common Lane

HS2 newsletter | March – June 2026

This newsletter originally went out on Saturday 21 March and has been updated on 2 April – see page 5

High Speed Two (HS2) is the new high-speed railway for Britain. BBVS is the contractor working on behalf of HS2 to construct Old Oak Common Station

Old Oak Common Lane long-term closure

The programme for the long-term closure of Old Oak Common Lane has been reviewed, and we can now confirm that **it will not take place before the beginning of 2028.**

This newsletter contains information on the current and future works that need to take place on Old Oak Common Lane. There is also information about the engagement and community support we will put in place during the long-term closure.

We need to close the road so we can build new railway bridges, widen the road and new retaining walls are constructed. The level at which the road runs will be lowered to allow double-decker buses to pass under the bridges.

This will cause significant disruption to the local community, and we want to outline our early thinking in terms of the community support that will rightly be expected as we carry out these works.

Upcoming works

Work on Old Oak Common Lane continues. We have diverted utilities such as power, water, gas and telecommunications infrastructure. Moving and upgrading utilities was necessary ahead of constructing tunnels this year from our Victoria Road site under Old Oak Common Lane to the station.

Our recent newsletter with traffic management works on Old Oak Common Lane: <https://assets.hs2.org.uk/wp-content/uploads/2025/12/Traffic-Management-Update-OOCL-Jan-to-Mar-2026-update-4-March.pdf>



Contact us

Our HS2 Helpdesk team are available all day, every day. You can contact them by:

Freephone **08081 434 434**

Minicom **08081 456 472**

Email
hs2enquiries@hs2.org.uk

Write to:

FREPOST
HS2 Community
Engagement

Website **www.hs2.org.uk**

To keep up to date with what is happening in your area, visit:

www.hs2inyourarea.co.uk

Ahead of the closure

Upcoming work

Two pieces of work need to take place on Old Oak Common Lane over the year from early 2026 to early 2027.

Work to **divert utilities** continues – making connections, upgrading services and preparing underground utility infrastructure ahead of tunnelling from our Victoria Road site.

Work will also restart around the site of the demolished **railway bridge** between our entrance and the bridges just before Minster and the Scrubs. The remaining supporting walls, or abutments, will be removed and, later in the year, the foundations will be constructed.

How this affects you

To support the utility works on Old Oak Common Lane, there is likely to be traffic management in place north of Wells House Road until 2027.

This will include brief periods of four-way temporary lights with parking bay suspensions on Wells House Road. Between May and October 2026, one lane on the realigned section of Old Oak Common Lane in this area will be closed to allow the temporary diversion of a major Thames Water main.

The bridge work will require the closure of one lane at any one time between our site entrance and the bridges by Minster, currently likely to take place between April 2026 and early April 2027, although this may change.

Please check online or via our community noticeboards for updates. We will also



provide regular bulletins and notices to local residents with full details of all these works.

Some activities are subject to approvals from the local authorities and may change at short notice. We will let you know of any changes via the HS2 website. You can register for email updates: <https://www.hs2.org.uk/in-your-area/local-community-webpages/hs2-in-old-oak-and-north-acton/>

During the closure

When the full closure of Old Oak Common Lane begins, we will continue to work on the bridges above the road. Clear diversion routes will be in place, and a pedestrian footpath will also be provided, so that people can safely pass through the area.

Once the bridges are ready, Network Rail will install track, signalling and overhead lines across them. This infrastructure forms the western approach to the new Elizabeth Line, Great Western Main Line and Heathrow Express platforms at Old Oak Common Station.

During this time, we will also be working to lower and realign Old Oak Common Lane.

The railway will then be temporarily closed between Ealing and Paddington while the lines are connected to the station. Once the old lines over the southern bridges are decommissioned, those bridges will be demolished and replaced as part of the realignment of the Great Western Main Line.

We will realign and lower Old Oak Common Lane to allow double-decker buses to pass

and take passengers to the new station. A finish will be applied to the retaining wall that runs along Wells House Road will be replaced. The design is still being finalised and will be shared with residents and other stakeholders well before work begins. The finish is intended to be in keeping with the overall design of the lowered road and will be sympathetic to the surrounding area.

A raised segregated footpath will also be provided, with improved lighting and artwork on the underpass walls.

When the new rail bridges and highway improvements are complete, Old Oak Common Lane will then be reopened, allowing traffic and bus services to resume in both directions.

Community support

We understand that there will be considerable impact to the local community

through the extended closure of Old Oak Common Lane and the extensive programme of works planned during that time. We have been engaging with the local authorities and businesses, and we will be working closely with residents on what we will be doing and the community support measures we will put in place.

Ahead of the closure, there will be a series of public events to ensure that there is transparency about the work and how it will affect the community. This will include engaging with you and getting feedback about the community support package that will be put in place to help mitigate the disruption and impacts of the closure.

In addition, we are working with Ealing council to rectify the flooding issues on Victoria Road and engaging with emergency services to maintain operational standards throughout the closure.

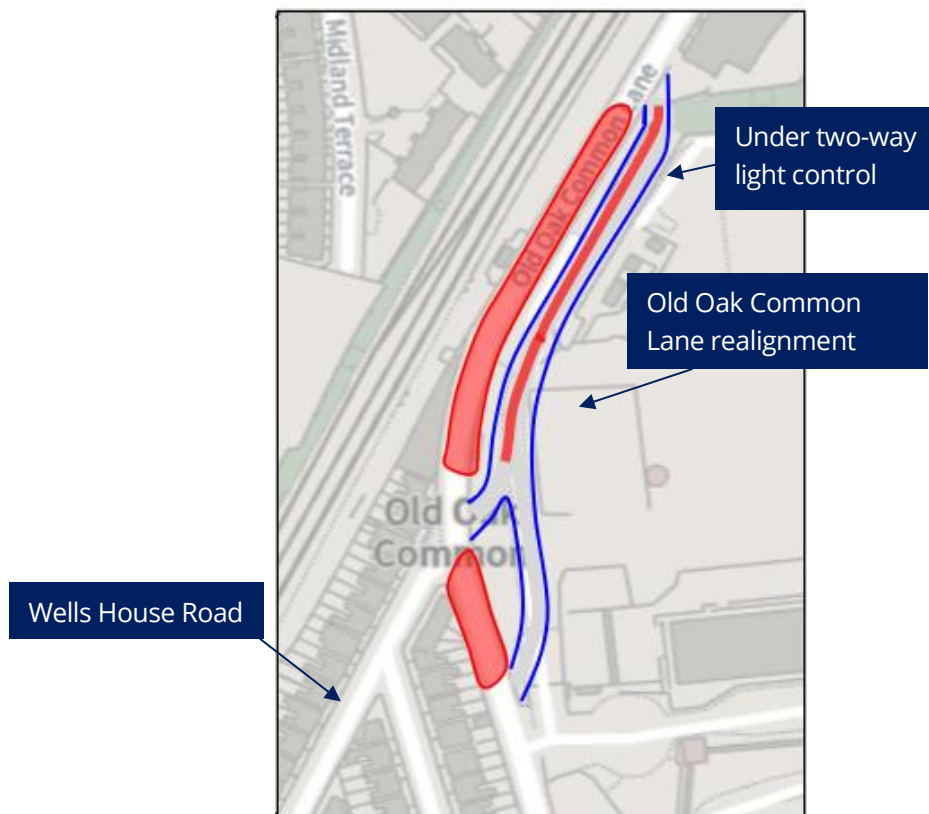


Traffic management on Old Oak Common Lane from April to June 2026

We are replacing utility services and working on removing old bridge infrastructure on Old Oak Common Lane **between April and June 2026**. We anticipate traffic on Old Oak Common Lane will be heavier than usual over the next few months and **we strongly encourage you to leave extra time for your journey**. We will update this newsletter accordingly, so please check regularly for updates. Please also note that dates are subject to change.

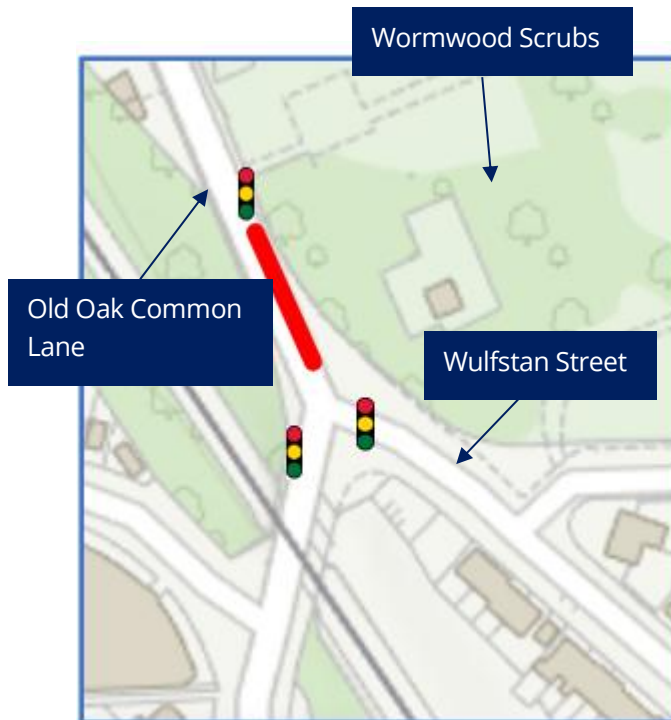
Works scheduled from April

From Sunday 15 March until early autumn, there will be two-way traffic lights in place while Thames Water make temporary utility connections. The northbound carriageway will be closed during this period.



Map showing location of closure of southbound lane of realigned Old Oak Common north, which will be in place until 4 April. The closure will be lifted on 5 April but will be put in place again from 18 April until 5 May and from 13 May until approximately 1 September.

From Sunday 15 March until Saturday 4 April, temporary three-way traffic lights will be in place while Cadent Gas connect gas mains and undertake other works. The southbound carriageway will be closed. These lights will be at the junction of Old Oak Common Lane with Wulfstan Street to the south of Minster and Walking On Wood.



 = Temporary traffic lights

Map showing location of works on Old Oak Common Lane until 4 April 2026.

Please note the below works have been POSTPONED until further notice. We will notify residents as soon as possible when they've been rescheduled.

By the entrance of Wells House Road, from **Saturday 4 April (during the Easter weekend) to Saturday 18 April**, and again from **Tuesday 5 May to Wednesday 13 May**, we are undertaking gas and water diversion works and upgrading old, cast-iron pipes for modern plastic pipes. This is a continuation of the work that ran from February into March. Please note, while the traffic management will be live from **Saturday 4 April**, we will not start working until **Tuesday 7 April**.

Unfortunately, due to the volume of work, we may need to work evenings on weeknights up until 10pm. You can find out more about our extended working hours in this notification:

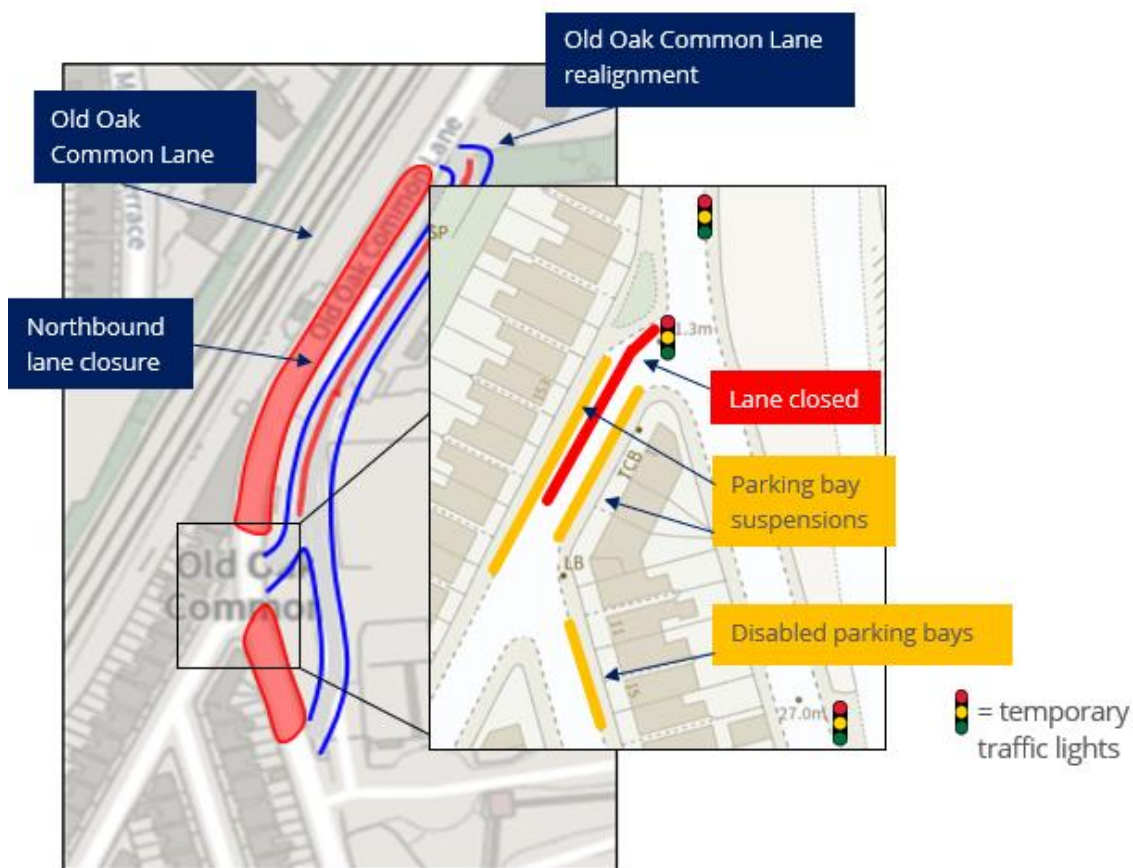
<https://assets.hs2.org.uk/wp-content/uploads/2026/02/Extended-working-hours-Spring-2026-1.pdf>

Some of the work we are carrying out will be loud, even though it will be within the limits granted to us. We will be excavating by hand where possible, but we will need to use a vacuum excavator on occasions to suck up loose soil and water. This is the safest form of excavating when working around utilities. Some mechanical breaking will be required to remove the road surface. This work will be loud. We have noise reduction measures in place, including acoustic barriers and noise reduction equipment such as shrouds. At the end of the works, we will need to reinstate the road surface.

The work includes:

- Four-way traffic lights with Wells House Road, the station site entrance and Old Oak Common to the north and to the south. Southbound lane closure on Old Oak Common Lane
- Access to properties will be maintained throughout
- Parking bay suspensions: one disabled parking bay has been moved. We will be in touch with residents whose parking bays are restricted about possible mitigations
- Temporary route for pedestrians on Old Oak Common Lane
- One lane suspended in Wells House Road

We are sorry for longer delays to traffic. Signs in the area advise through traffic to use alternative routes. Please note that the dates below are subject to change.



Map showing location of works on Wells House Road and realigned Old Oak Common north from 4 April to 18 April and from 5 May until 13 May.

Update: Weekend road closures on Old Oak Common Lane

Friday 10 April at 10pm until Monday 13 April at 5am

Due to construction challenges, we were not able to complete the works during the road closure on Friday 27 March until Monday 30 March. We therefore need to change the pre-planned road closure on Old Oak Common Lane from the north to the south of the road from Friday 10 April at 10pm until Monday 13 April at 5am.

Where we will be working

Saturday 25 April at 6:00 am until Sunday 26 April at 10:00pm

We are renewing road line markings and the painted road instructions north of Wells House Road. We will remove the markings using a mechanical process which will be noisy. Machinery grinds the road, breaking up the marking. We will work during our core hours of 8:00am to 5:00pm. Over this weekend we will be working on utilities to the north of Wells House Road.

Please note that there will also be a road closure over the previous weekend as well, from **Friday 17 April at 10:00pm until Monday 20 April at 5:00am**. While the road is closed, Wells House Road residents and visitors can enter and exit to the south on Old Oak Common Lane – towards the bridges and Wormwood Scrubs end of Old Oak Common Lane. The pavement on Old Oak Common Lane will be open in both directions to allow pedestrians to travel either way.



Keeping you informed

We are committed to keeping you informed about work on HS2. This includes making sure you know what to expect and when to expect it, as well as how we can help.

Residents' and Construction Commissioner

The independent Residents' and Construction Commissioner oversees and monitors our **community engagement strategy**, making sure we fulfil our commitments to you.

The commissioner monitors the way we manage and respond to complaints about construction and advises members of the public how to make complaints.

The commissioner helps settle disputes involving individuals and organisations that we can't resolve.

You can find the commissioner's report and our responses at:

www.gov.uk/government/collections/independent-hs2-commissioner

The commissioner can be contacted on:
hs2commissioner@dft.gov.uk

Property and compensation

You can find out all about HS2 and properties along the route by visiting:

www.gov.uk/government/collections/hs2-property

Find out if you're eligible for compensation at:

www.gov.uk/claim-compensation-if-affected-by-hs2

Holding us to account

If you are unhappy for any reason, you can make a complaint by contacting our HS2 Helpdesk team.

For more details on our complaints process, please visit our website:
www.hs2.org.uk/contact-us/how-to-complain

HS2-OOC - SCP-26-1864

Contact us

Our HS2 Helpdesk team are available all day, every day. You can contact them by:

 Freephone **08081 434 434**

 Minicom **08081 456 472**

 Email hs2enquiries@hs2.org.uk

Write to:

FREEPOST
HS2 Community Engagement

Website www.hs2.org.uk

To keep up to date with what is happening in your area, visit:

www.hs2inyourarea.co.uk

Please contact us if you'd like a free copy of this document in large print, Braille, audio or easy read. You can also contact us for help and information in a different language.

We are committed to protecting personal information. If you would like to know more about how we use your personal information, please see our privacy notice (www.gov.uk/government/publications/high-speed-two-ltd-privacy-notice)