

# Notice of 14-month road closure, Dalehouse Lane, Kenilworth

**HS2-BBV-25-1409**

## Location

Dalehouse Lane, Kenilworth

## Duration

We will be closing Dalehouse Lane from Tuesday 7 April 2026 until 6pm on Monday 7 June 2027. The road closure will be in place 24/7 while the works are carried out.

## What we are doing

We need to close Dalehouse Lane to construct the new overbridge that will raise the road over the HS2 railway.

## What to expect

There will be increased construction activity during the closure, and you will experience some disruption to your travel times. Please plan ahead to avoid delays to your journey. A fully signed diversion route will be in place throughout the period of closure. Please see map on page two.

We are committed to keeping you informed about work on HS2. This includes ensuring you know what to expect and when to expect it, as well as how we can help you. Should you have any questions or concerns about our works you can contact us by:



Freephone **08081 434 434**



Minicom **08081 456 472**



Email **HS2enquiries@hs2.org.uk**



Writing to **FREEPOST  
HS2 Community Engagement**



Website **www.hs2.org.uk**

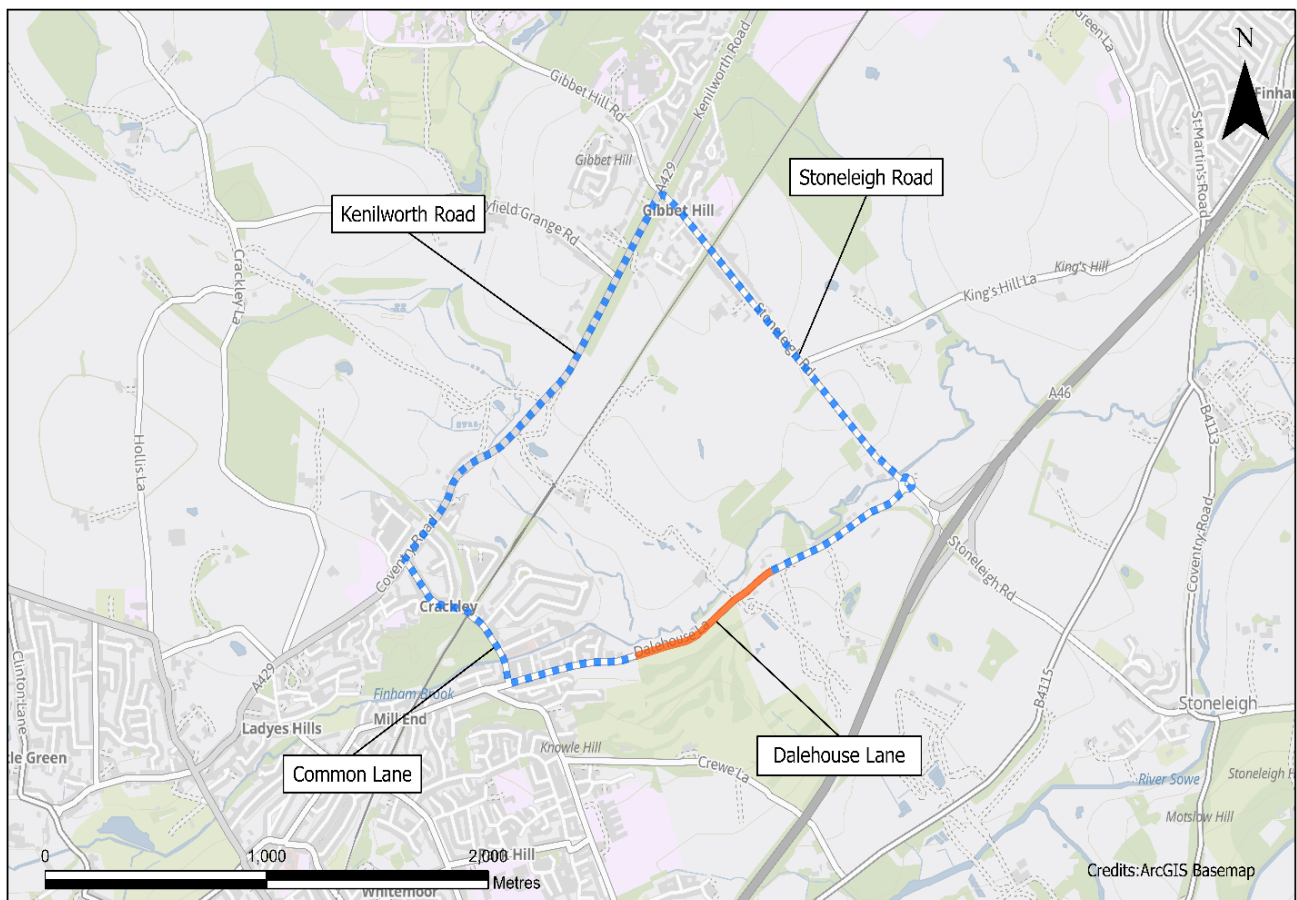
Keep up to date with what is happening in your local area at  
**www.hs2.org.uk/in-your-area/  
in-your-area-map/**

### Additional information

Access to properties and businesses will be maintained throughout the closure. There will be no access through Dalehouse Lane for pedestrians and cyclists during the closure. The diverted Public Right of Way K29 will be unaffected by the closure.

### Where we will be working

Map showing the road closure on Dalehouse Lane with a signed diversion route



— Road Closure

- - - Diversion

Date: 13/01/2026

Scale: 1:20,000

Dalehouse Lane closure INC000004809345.2 CV\_BO

### Public transport information

For information regarding public bus routes scan the QR code or visit <https://bustimes.org/>



## HS2 Drop-in events in your area

Balfour Beatty VINCI  Working in partnership with **HS2**

### We would like to invite you to the HS2 drop-in events to discuss the Dalehouse Lane closure at the Kenilworth Centre

High Speed Two (HS2) is the new high speed railway for Britain.

We will be holding informal drop-in events at the Kenilworth Centre, where you can come and chat to your local Community Engagement Team about the 14-month closure of Dalehouse Lane. At this event you will be able to:

- talk to our experts about engineering, construction, property, the environment, utilities and more;
- talk to your local community engagement team about any queries you may have and community investment opportunities.



Come and talk to us on Tuesday 17 February 2026, from **2pm to 6pm**.

Drop-in session will be held at the Kenilworth Centre

Address: the Kenilworth Centre,  
65 Abbey End,  
Kenilworth, CV8 1QJ

We look forward to meeting you.

Reference number: **HS2-BBV-26-1592**



Freephone **08081 434 434**

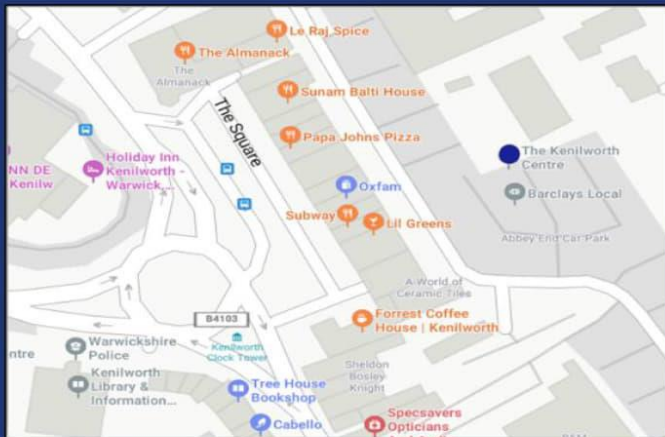
Minicom **08081 456 472**

Email **hs2enquiries@hs2.org.uk**

Website **www.hs2.org.uk**

To keep up to date with what is happening in your local area, visit:

**www.hs2inyourarea.co.uk**



Come and talk to us on Thursday 16 April 2026, from **2pm to 6pm**.

Drop-in session will be held at the Kenilworth Centre

Address: the Kenilworth Centre,  
65 Abbey End,  
Kenilworth, CV8 1QJ

We look forward to meeting you.

Reference number: **HS2-BBV-25-1518**



Freephone **08081 434 434**

Minicom **08081 456 472**

Email **hs2enquiries@hs2.org.uk**

Website **www.hs2.org.uk**

To keep up to date with what is  
happening in your local area, visit:

**www.hs2inyourarea.co.uk**

**Access to the HS2 South Warwickshire  
Newsletter can be found here:**



Please contact us if you'd like a free copy of this document in large print, Braille, audio or 'easy read' format. You can also contact us for help and information in a different language.

### **Holding us to account**

If you are unhappy for any reason, you can make a complaint by contacting our HS2 Helpdesk team. For more information, visit: **www.hs2.org.uk/how-to-complain**

We have an independent Residents' and Construction Commissioner who helps settle disputes and monitors the way in which we manage and respond to complaints about construction.

For more information visit: **www.hs2.org.uk/independent-commissioner**