

Single lane closure for footway works in Whielden Lane, Amersham, Bucks

HS2-ALIGN-26-1626

Location

Whielden Lane, Amersham, Buckinghamshire from the junction with A404 to the junction with HS2 site entrance, near to Amersham Hospital.

Duration

The northbound lane (towards Old Amersham) will be closed from 9:00am Monday 23 February to 11:59am Friday 13 March 2026.

What we are doing

We will be closing the northbound lane to remove site fencing and install the permanent footway around the HS2 ventilation shaft site.

What to expect

Our team will be visible and working in the carriageway throughout daylight hours while the northbound lane is closed. Three-way traffic management and a signed pedestrian diversion will be operational. Advanced warning signs for road users will be installed to give guidance during the period of the lane closure.

We are committed to keeping you informed about work on HS2. This includes ensuring you know what to expect and when to expect it, as well as how we can help you. Should you have any questions or concerns about our works you can contact us by:



Freephone **08081 434 434**



Minicom **08081 456 472**



Email **HS2enquiries@hs2.org.uk**



Writing to **FREEPOST
HS2 Community Engagement**

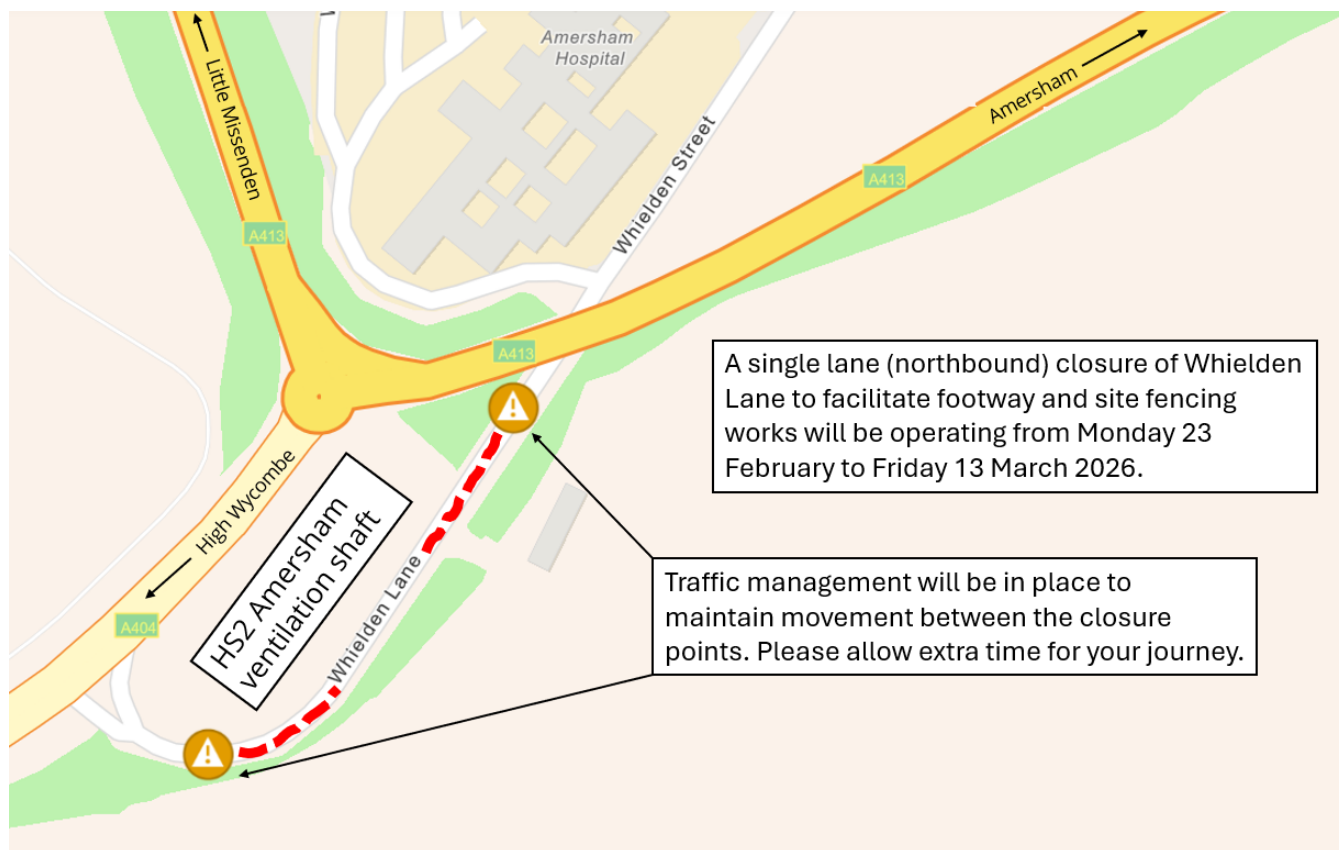


Website **www.hs2.org.uk**

Keep up to date with what is happening in your local area at

**[www.hs2.org.uk/in-your-area/
in-your-area-map/](http://www.hs2.org.uk/in-your-area/in-your-area-map/)**

Map of the lane closure



Please contact us if you'd like a free copy of this document in large print, Braille, audio or 'easy read' format. You can also contact us for help and information in a different language.

Holding us to account

If you are unhappy for any reason, you can make a complaint by contacting our HS2 Helpdesk team. For more information, visit: www.hs2.org.uk/how-to-complain

We have an independent Residents' and Construction Commissioner who helps settle disputes and monitors the way in which we manage and respond to complaints about construction.

For more information visit: www.hs2.org.uk/independent-commissioner