

# Notice of traffic management on Attleboro Lane

## HS2-BBV-26-1599

### Location

Attleboro Lane, Water Orton

### Duration

**Monday 26 January and Tuesday 27 January 2026.** The traffic management will be in place from 07:30 to 18:00 both days.

### What we are doing

To continue our preparation of the HS2 railway traffic management will be installed to allow our team to complete necessary bridge joints on the Attleboro Overbridge.

### What to expect

- A lane closure will be in place using Stop & Go traffic signal control and temporary traffic lights to manage traffic using the overbridge.
- Low level of noise from machinery and minor disruption on journeys.
- Access will be maintained for residents and deliveries.
- Keep noise and disruption to a minimum

We are committed to keeping you informed about work on HS2. This includes ensuring you know what to expect and when to expect it, as well as how we can help you. Should you have any questions or concerns about our works you can contact us by:



Freephone **08081 434 434**



Minicom **08081 456 472**



Email **HS2enquiries@hs2.org.uk**



Writing to **FREEPOST  
HS2 Community Engagement**

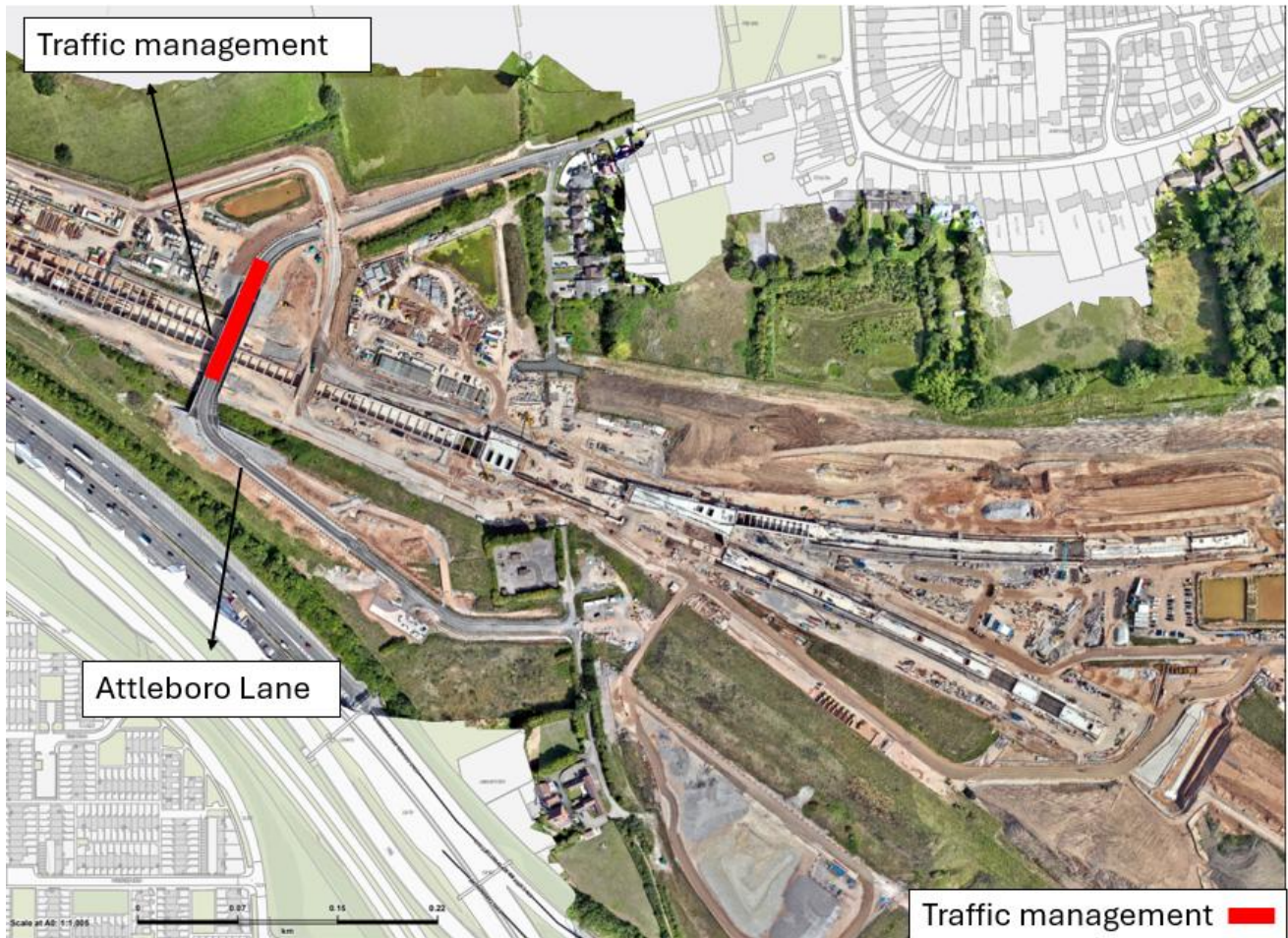


Website **www.hs2.org.uk**

Keep up to date with what is happening in your local area at **www.hs2.org.uk/in-your-area/in-your-area-map/**

## Additional information

Please see the below map of where we will be working



Please contact us if you'd like a free copy of this document in large print, Braille, audio or 'easy read' format. You can also contact us for help and information in a different language.

### Holding us to account

If you are unhappy for any reason, you can make a complaint by contacting our HS2 Helpdesk team. For more information, visit: [www.hs2.org.uk/how-to-complain](http://www.hs2.org.uk/how-to-complain)

We have an independent Residents' and Construction Commissioner who helps settle disputes and monitors the way in which we manage and respond to complaints about construction.

For more information visit: [www.hs2.org.uk/independent-commissioner](http://www.hs2.org.uk/independent-commissioner)