

Contact our HS2 Helpdesk team on **08081 434 434**

# HS2 Update

North Warwickshire | Winter 2025

High Speed Two (HS2) is the new high-speed railway for Britain.

This update will provide key information and news on HS2 works in North Warwickshire.

## River Cole realignment successfully completed in Warwickshire

HS2 has completed the realignment of the River Cole near Coleshill, Warwickshire in August, the largest natural river diversion on the project at 749 metres.

The work was required to support construction of the Delta Junction and its two new viaducts.

Designed by the Mott MacDonald SYSTRA Design Joint Venture and delivered by Balfour Beatty VINCI, the scheme uses nature-based solutions to increase biodiversity, support climate resilience, and reduce carbon.

The river has been reshaped to follow a more natural, meandering path with varied cross-sections, creating new habitats and improving flood resilience. Natural gravels were reused to form the riverbed, while biodegradable materials aid vegetation growth and erosion control.



River Cole Viaduct and river realignment



### River Cole realignment completion

Excavation finished in 2024, with water flowing into the new channel following removal of temporary dams. The river is now being monitored for flow and habitat development.

This project is part of HS2's Green Corridor, creating connected, climate-resilient habitats and accessible spaces for people and wildlife.

Simon Casey, HS2's Head of Environment, said the project is "a shining example" of how HS2 integrates "climate resilient infrastructure, environmental preservation and positive community benefit."

Construction now continues on the nearby viaducts and embankments, with completion due in 2026. Further updates will be provided as work progresses.



## HS2's final tunnel breakthrough in the West Midlands

HS2 has achieved a major milestone in the West Midlands with the completion of the Bromford Tunnel. On 13 October, Tunnel Boring Machine (TBM) Elizabeth made its final breakthrough at Washwood Heath, marking the end of excavation for the westbound tunnel.

TBM Elizabeth began its journey near Water Orton in North Warwickshire in March 2024, boring 3.5 miles beneath key transport routes and challenging ground conditions. Earlier this year, its twin TBM, Mary Ann, completed the eastbound tunnel.

Together, the machines removed 1.8 million tonnes of spoil and installed nearly 6,000 concrete segments, supported by a 450-strong team. This marks Balfour Beatty VINCI's fourth and final TBM breakthrough in the West Midlands.

Work now moves to secondary lining and ventilation, while Washwood Heath prepares to become HS2's main depot and control centre.

Further updates will follow as progress continues along the route.



Cllr Masid Mahmood with members of HS2 & BBV Engagement Team



Project team gather for TBM breakthrough

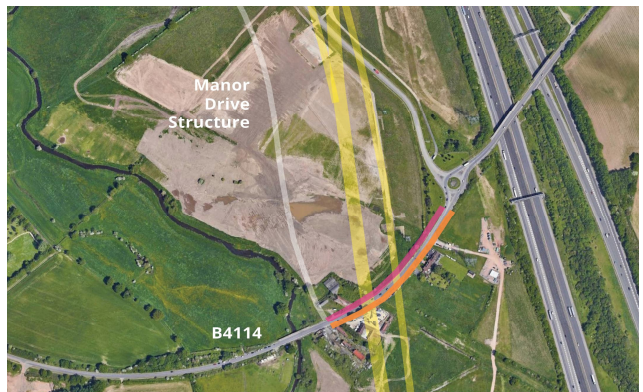
## B4114 Birmingham Road Realignment

The B4114 Birmingham Road returned to its original alignment in May 2025, marking a key highlight in restoring transport links along this busy route.

The diversion that had been in place since February 2024 was successfully removed, improving connectivity for local communities and commuters. As part of the ongoing HS2 works, we have now completed the next stage of the new viaducts spanning the B4114.

This included installing precast parapets and finishing the deck segments above the road. In early November, a full road closure was established to upgrade works safely between Manor Drive and the River Cole Bridge, with signed diversions for all vehicles, along with pedestrian and cycle access.

These works were essential for progressing viaduct construction and ensuring the route's long-term resilience. Completed ahead of schedule, the B4114 reopened on 26 November, four days earlier than planned, helping reduce disruption for local residents.



B4114 Birmingham Road Construction Map



## HS2 Reset - Deferrals

We're resetting HS2 to deliver the railway at the lowest reasonable cost and keep within annual budgets. Our CEO, Mark Wild, is leading this reset to get the project back on track.

The Government has backed the reset with a multi-year financial settlement, giving us the stability and certainty needed to review HS2's cost and schedule. This will ensure taxpayers have a clear picture of what the project will cost and when it will be delivered.



HS2 CEO, Mark Wild

### What's changing?

In March 2023, works between Curdworth in North Warwickshire and Handsacre in Staffordshire were deferred. This pause has now been extended for four more years so we can focus resources on opening the first section of HS2 between Old Oak Common and Birmingham. This approach will help us sequence construction correctly, improve productivity, and reduce costs.

### Local impact

In North Warwickshire, key assets already underway, such as Faraday Avenue Underbridge, M42 Marston Box Structure, and Church Lane Overbridge, will be completed. We remain committed to finishing the 18-mile stretch north of Birmingham, with essential works continuing, including critical utility projects and construction intersecting major roads and rail lines.

### Next steps

We'll carry out detailed impact assessments to understand how landowners and businesses are affected and will engage directly with them as soon as possible. We'll also continue to keep the community updated and respond to any concerns.

## Church Lane Overbridge

Work on the Church Lane overbridge is progressing well, and the structure is expected to be completed by the end of the year.

Once this stage of work is completed, construction will pause as part of the wider project delay. The site will be closed down and secured in early 2026.



Church Lane Overbridge

This pause includes additional works in North Warwickshire and Handsacre in

Staffordshire. The decision allows us to prioritise resources on delivering the railway between Old Oak Common and Birmingham, ensuring the construction programme remains on track. We will continue to keep the community informed with further updates regarding Church Lane.

## Commissioner visits HS2 works in North Warwickshire

HS2's Residents' and Construction Commissioner Robert Herga, visited North Warwickshire to see progress on the landmark Delta Junction and meet the communities shaping the project.



On Wednesday, 22 October, the new HS2 Commissioner, Robert Herga, HS2's Residents' and Construction Commissioner, visited key construction sites in North Warwickshire to learn more about the progress of the railway and its impact on local communities.

The visit included a tour of Water Orton and Coleshill, where the Commissioner saw first-hand how major structures at the Delta Junction are being integrated into the surrounding landscape.

HS2 Commissioner, Robert Herga, visiting HS2 works

This section of the route is a critical part of HS2, connecting lines and shaping future travel across the region.

HS2's Delta Junction is a triangular section of track that will allow trains to travel between London, Birmingham, and the North without stopping at Birmingham. This complex junction includes embankments, cuttings, and 13 viaducts crossing roads, rivers, and rail lines, six precast segmental, four composite, and three low viaducts.

The tour provided an opportunity to discuss how the project interfaces with local people and places, ensuring that community considerations remain central as construction advances.



HS2 Commissioner, Robert Herga with members of HS2 & BBV Engagement Team

## Considerate Constructors Scheme National Awards

The CCS National Awards promote excellence in construction through the Considerate Constructors Scheme.

For nearly 30 years, the Considerate Constructors Scheme (CCS) has promoted best practices in construction, focusing on community, environmental, and workforce impact. This year, our BBV regional teams earned Gold and Bronze awards for their positive contributions, and our compounds received top marks in CCS inspections - recognising our commitment to people and the planet.



# Skills, employment and education

We are committed to ensuring local communities have priority access to jobs and training opportunities.

Our Recruit Local First strategy aims to empower the communities we serve. This approach guarantees that employment opportunities within our business are initially extended to local unemployed jobseekers, offering skills and development opportunities to those who struggle to secure sustainable and meaningful employment. Training courses are available for candidates meet the eligibility criteria and are in receipt of state benefits. If you are looking for work, please get in touch to register your interest and send your CV to: **[see.team@balfourbeattyvinci.com](mailto:see.team@balfourbeattyvinci.com)**



Two easy steps to register your interest in our current opportunities

- 1 Scan the QR code or use the link below: <https://forms.office.com/e/pk4aWbEeCH>
- 2 and send us your CV: [see.team@balfourbeattyvinci.com](mailto:see.team@balfourbeattyvinci.com)



## Case study: Nicholas's story

After school, Nicholas completed a multiskilled maintenance course at college. He then gained some construction tickets and a CSCS card to improve his employability prospects. His first full time job was in a warehouse, but he soon realised that there was a lack of progression opportunities. After quitting his warehouse job, Nicholas was unemployed for more than a year.

He was able to secure a role on HS2 through a family member – before this, he knew HS2 was a significant employer in his local area, and he had hoped to eventually find a place on the project.

Nicholas wants to undertake a traffic marshalling ticket to further improve his skillset. He would encourage others to explore HS2 opportunities, especially if the programme involves upskilling in a specific area of work because this will bring lots of employment opportunities.

In June 2025, Nicholas attended a parliamentary event with Rachel Taylor MP and HS2 CEO Mark Wild where he discussed his career journey and how HS2 has impacted his life. "This job has ticked all my boxes and really helped me a lot."

Based at Kingsbury, North Warwickshire



**Nicholas Bayliss**

Apprentice Groundworker



# Community Investment

HS2's Community Investment programme enables us to support those communities most impacted by our works.

## High Meadow Community School's much-loved area renewed through BBV's generous donation

This summer, High Meadow Community School in Coleshill received a big donation of wood chippings to transform its much-loved 'Forest School.' The upgrade created new footpaths and play areas for children to enjoy when they return in September.

As part of BBV ongoing commitment to investing in the local community, we have continued our partnership with High Meadow Community School in Coleshill through another meaningful project.

Working with our Arts Legacy team, we saw an opportunity to improve the school's Forest School, an outdoor learning space in need of major upgrades.

With support from our landscaping contractor, Acorns, we donated 12 tonnes of wood chippings to revitalise the area.



BBV revamping High Meadow School's outdoor space

Additional tools from Selkent and CEF made the project possible.

A team of 15 volunteers came together to move the wood chippings and create safe new walkways, play zones, and outdoor learning spaces.

Thanks to everyone's efforts, the transformation was completed in just one day.

## BBV and HS2 volunteers give Water Orton cricket club, a new look



Before



After

Water Orton cricket club's outdoor seating before and after

BBV and HS2 volunteers collaborated over several days to provide Water Orton Cricket Club with a 'pitch perfect' makeover, in the summer.

The project began with designing and building new storage benches for the changing rooms, followed by a fresh coat of paint, from BBV's Community Engagement team. To finish, BBV's carpenters restored the club's weathered outdoor seating, bringing it back to life. This initiative highlighted teamwork and BBV's commitment to supporting communities impacted by our works.

The Cricket Club shared their appreciation:

*"The work carried out by the BBV team on the changing facilities represents the first upgrade in over 10 years, creating a welcoming space for players. Cricketers from Water Orton CC and ECAD Midlands (England Cricket Association for the Deaf – Midlands) have greatly benefited, especially from the innovative benches with storage, a real game-changer. The seating around the ground has also been restored to its former glory. Thanks to BBV, visitors will enjoy these improvements from 2026 onwards."*

## BBV's commitment to positive change across North Warwickshire

At BBV, we believe building infrastructure goes hand-in-hand with building stronger communities.

This year, our team working on the HS2 project in North Warwickshire has supported local organisations, schools, and green spaces through volunteering, donations, and partnerships.

Our ongoing partnership with the British Heart Foundation saw us donate 24 bags of clothes, helping fund life-saving research and support for those affected by heart disease.

Education has also been a major focus. At Two Rivers Special Educational Needs Primary School, we hosted a careers event to inspire pupils and later transformed the school's outdoor garden into a vibrant, accessible space during a volunteer day. Florendine Primary also benefited from a volunteer day where our team improved their outdoor area, creating a more enjoyable environment for pupils and staff.

Beyond schools, we've dedicated time to preserving local nature. At Belgrave Community Garden, volunteers tackled gardening duties to maintain this cherished space. In Middleton village, we worked at the nature reserve to protect biodiversity, removing invasive Himalayan balsam, installing bird and owl boxes, and conducting wildlife surveys to guarantee the reserve remains a habitat.

These efforts ensure BBV's commitment to leaving a positive legacy beyond HS2. By partnering with local organisations and dedicating our time and resources, we aim to create lasting benefits for the people and places that make North Warwickshire special.



BBV volunteers helping local communities across North Warwickshire

### Keep up to date on HS2 activity in your area

To receive notifications of our upcoming activity, sign up for email notifications:

[www.hs2.org.uk/local-mailing-list](http://www.hs2.org.uk/local-mailing-list)

To view more detail on what work is happening near you, visit our interactive map:

[www.hs2.org.uk/in-your-area/map](http://www.hs2.org.uk/in-your-area/map)

Find out what engagement events are coming up in your area at:

[www.hs2.org.uk/events](http://www.hs2.org.uk/events)

**Follow us on social channels**



# Keeping you informed

We are committed to keeping you informed about work on HS2. This includes making sure you know what to expect and when to expect it, as well as how we can help.

## Residents' and Construction Commissioner

The independent Residents' and Construction Commissioner oversees and monitors our **community engagement strategy**, making sure we fulfil our commitments to you.

The commissioner monitors the way we manage and respond to complaints about construction and advises members of the public how to make complaints.

The commissioner helps settle disputes involving individuals and organisations that we can't resolve.

You can find the commissioner's report and our responses at:  
[www.gov.uk/government/collections/independent-hs2-commissioner](http://www.gov.uk/government/collections/independent-hs2-commissioner)

The commissioner can be contacted on:  
[hs2commissioner@dft.gov.uk](mailto:hs2commissioner@dft.gov.uk)

## Property and compensation

You can find out all about HS2 and properties along the route by visiting:  
[www.gov.uk/government/collections/hs2-property](http://www.gov.uk/government/collections/hs2-property)

Find out if you're eligible for compensation at:  
[www.gov.uk/claim-compensation-if-affected-by-hs2](http://www.gov.uk/claim-compensation-if-affected-by-hs2)

## Holding us to account

If you are unhappy for any reason, you can make a complaint by contacting our HS2 Helpdesk team.

For more details on our complaints process, please visit our website:  
[www.hs2.org.uk/contact-us/how-to-complain](http://www.hs2.org.uk/contact-us/how-to-complain)

**Reference number: HS2-BBV-25-1506**

High Speed Two (HS2) Limited, registered in England and Wales.  
Registered office: Two Snowhill, Snow Hill Queensway, Birmingham B4 6GA.  
Company registration number: 06791686. VAT registration number: 888 8512 56

## Contact us

Our HS2 Helpdesk team are available all day, every day. You can contact them by:

 Freephone **08081 434 434**

 Minicom **08081 456 472**

 Email **[hs2enquiries@hs2.org.uk](mailto:hs2enquiries@hs2.org.uk)**

Write to:

**FREEPOST  
HS2 Community Engagement**

Website

To keep up to date with what is happening in your area, visit:

**[www.hs2inyourarea.co.uk](http://www.hs2inyourarea.co.uk)**

**Please contact us if you'd like a free copy of this document in large print, Braille, audio or easy read. You can also contact us for help and information in a different language.**

We are committed to protecting personal information. If you would like to know more about how we use your personal information, please see our privacy notice ([www.gov.uk/government/publications/high-speed-two-ltd-privacy-notice](http://www.gov.uk/government/publications/high-speed-two-ltd-privacy-notice))