

Railway improvement work in your area

Community Relations
1st Floor,
One Eversholt Street
London NW1 2DN

Dear Neighbour,

Upcoming work in your area

What's happening?

We're upgrading the railway in your area to support the construction of High Speed Two (HS2) — Britain's new high-speed railway. In this letter, you will find details of where we will be working over the next few months.

During the Christmas shutdown you may notice more activity from our staff and contractors using North Pole Depot. They will be briefed on what behaviours are expected as usual.

Work to connect the Great Western Main Line with a new Old Oak Common station

Network Rail is working in partnership with HS2 to prepare the existing railway for the construction of HS2. This involves realigning sections of track, overhead wires, signalling and other vital rail systems to connect the Great Western Main Line railway to a new station being built by HS2 at Old Oak Common. Our work to prepare and move parts of the railway for HS2 will continue over several years.

When and where are we working?

On the reverse of this letter, you'll find a map showing where we will be working, along with the dates and times of each activity. Our teams will move along different sections of the railway, so work will not take place outside any one property continuously. Because some work must be carried out at night, we will need to use lighting and floodlights.

All staff/contractors are regularly briefed to be aware that this is a residential area & to keep noise to a minimum where possible.

Electrification: What do we mean by piling, masts and overhead wires?

If you'd like to learn more about electrification - including piling, masts and overhead wires - please scan the QR code or visit <https://bit.ly/rail-electrification>.



We're sorry if our work disturbs you. It may be noisy at times, and we may occasionally use bright light, but we will make every effort to keep disruption to a minimum.

If you have any queries about the work, please telephone our 24-hour national helpline on 03457 11 41 41 or email NRHS2@networkrail.co.uk. Please use the reference at the start of this letter.

If you have any questions about the HS2 project or HS2 construction work, please contact the HS2 helpdesk on 08081 434 434 or email HS2enquiries@hs2.org.uk

Yours sincerely

Community Relations Team

**Sign up to stay in the know about
rail work happening near your home.**

Rail Work
Near Me



Scan the QR code or
go online to receive
email updates.
[networkrail.co.uk/
RailWorkNearMe](https://networkrail.co.uk/RailWorkNearMe)



Where & When		
What's happening	Who is working	Dates & times of our work
	Map Area: 1	
<p>Installation of new track, drainage & signalling systems. Laying new rails, drains & signalling equipment.</p> <p>Installation of new overhead line equipment including structures & wires. How we supply power for the trains and run the traffic light system for the railway.</p> <p>Installation of cable routes. Placing ground cables for signalling.</p>	Network Rail in partnership with HS2	<p>(Sat-Sun) 2200-0900 03-04 Jan, 10-11 Jan, 07-08, 14-15 Feb, 21-22 Feb, 28 Feb-01 Mar, 07-08, 14-15, 21-22, 28-29 Mar.</p> <p>(Sat-Mon) 2200-0500 17-19, 24-26 Jan, 31 Jan-02 Feb, 14-16 Mar.</p> <p>(Mon) 0001-0500 19 Jan</p> <p>(Sat) 0001-0500 24 Jan.</p> <p>(Mon-Fri) 2300-0500 12-16 Jan, 19-23 Jan, 02-06 Feb.</p>
	Map Area: 2	
<p>Adjustments to overhead line structures & electrification wires. Maintaining the power cables that run trains & the structures.</p>	Network Rail in partnership with HS2	<p>(Sat-Sun) 2200-0900 03-04 Jan.</p> <p>(Sat-Mon) 2200-0500 17-19 Jan, 31 Jan-02 Feb.</p>
	Map Area: 3	
<p>Operation of construction & logistics compound. This includes deliveries/collections & includes general movements of items within the materials storage areas. The site also has project offices & staff/contractor parking.</p> <p>Due to the fluid nature of some of the work on site & deliveries, we cannot give exact dates & times when this will be happening.</p>	Network Rail in partnership with HS2	<p>24/7 Operation: Most of the activity will be: Monday - Friday 0800-1600 & Saturday nights.</p>
	Map Area: 4	
<p>Overhead line equipment assembly/fabrication compound. Our team will be assembling smaller pieces of the overhead structures together here before they are then moved into place and installed.</p> <p>Materials storage & railway access point.</p>	Network Rail in partnership with HS2	<p>24/7 Operation: Most of the activity will be: Monday - Friday 0800-1600 & Saturday nights.</p>

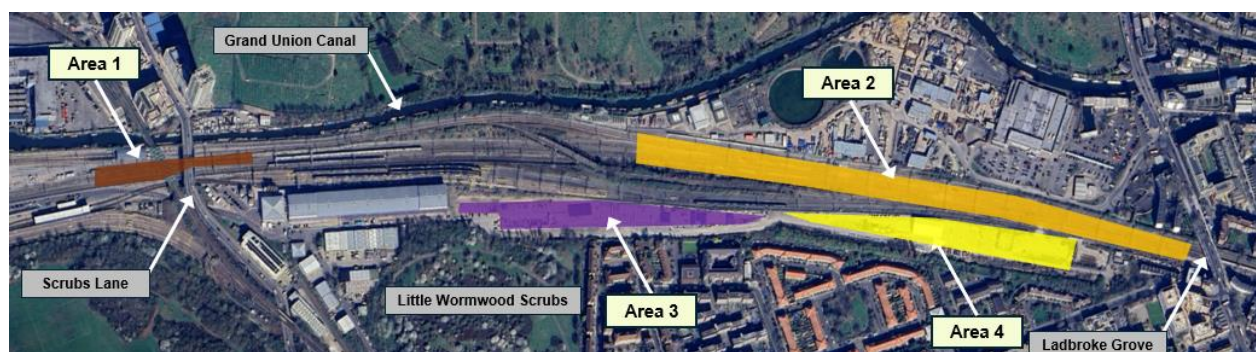


Figure 1: Areas of work