

Notice of road closure B4525 and Greatworth Temporary Road

HS2-EKFB-25-1554

Location

The B4525, Welsh Lane and the Greatworth Temporary Road near Greatworth.

Duration

Overnight closure: 7pm Saturday 10 January 2026 to 10am Sunday 11 January 2026.

If we are unable to complete these works due to poor weather or programme delay, we will use the below contingency dates:

7pm Saturday 17 January 2026 to 10am Sunday 18 January 2026.

What we are doing

Road surfacing and minor works on the new section of the Greatworth Temporary Road and B4525, Welsh Lane.

What to expect

- A one night closure of a section of the B4525 and the Greatworth Temporary Road.
- Large plant and workforce in the road, working overnight.
- Some additional lighting will be required.

We are committed to keeping you informed about work on HS2. This includes ensuring you know what to expect and when to expect it, as well as how we can help you. Should you have any questions or concerns about our works you can contact us by:



Freephone **08081 434 434**



Minicom **08081 456 472**



Email **HS2enquiries@hs2.org.uk**



Writing to **FREEPOST
HS2 Community Engagement**



Website **www.hs2.org.uk**

Keep up to date with what is happening in your local area at

**[www.hs2.org.uk/in-your-area/
in-your-area-map/](http://www.hs2.org.uk/in-your-area/in-your-area-map/)**

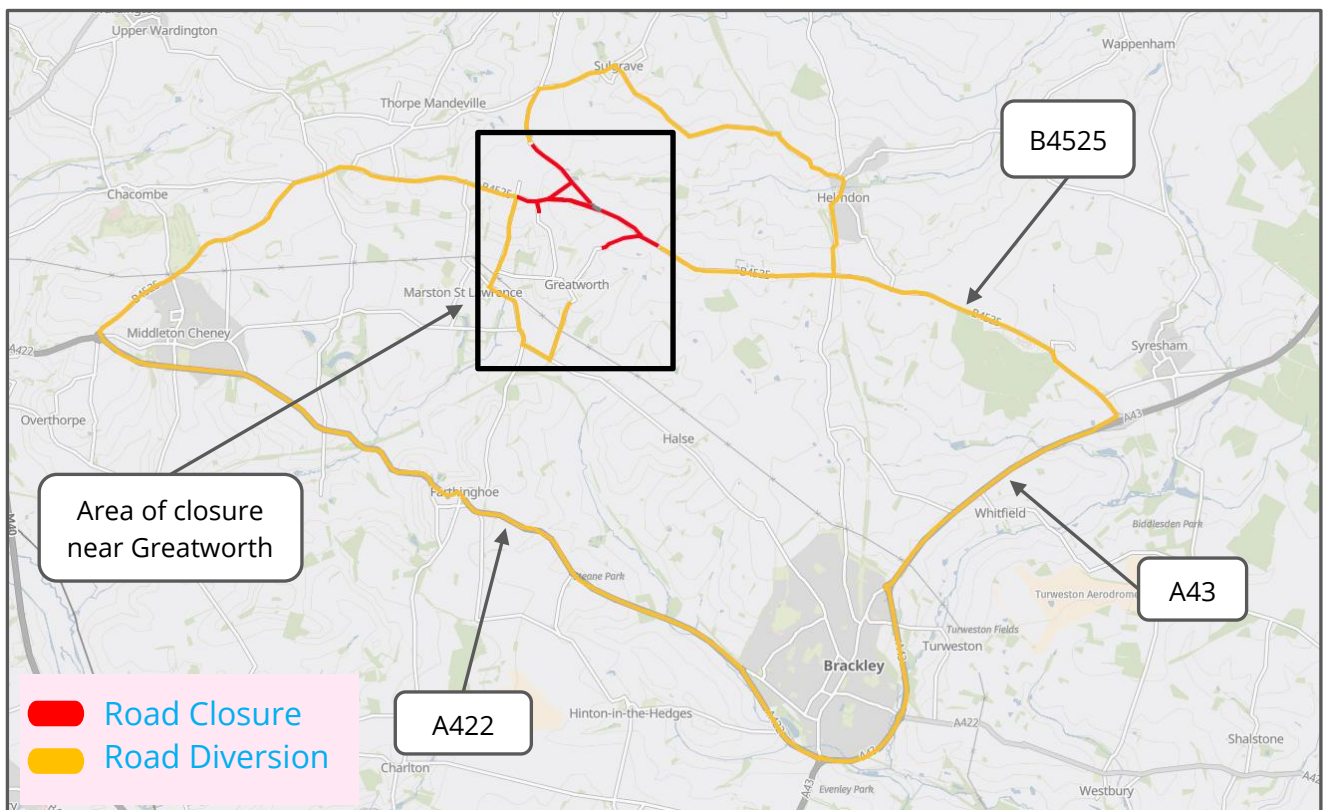
Additional information

Following the opening of the Phase Two of the Greatworth Temporary Road in December 2025, we need to complete the road surfacing and minor works following the road safety audit.

To complete these works safely, we require a closure of both the B4525 Welsh Lane and the Greatworth Temporary Road.

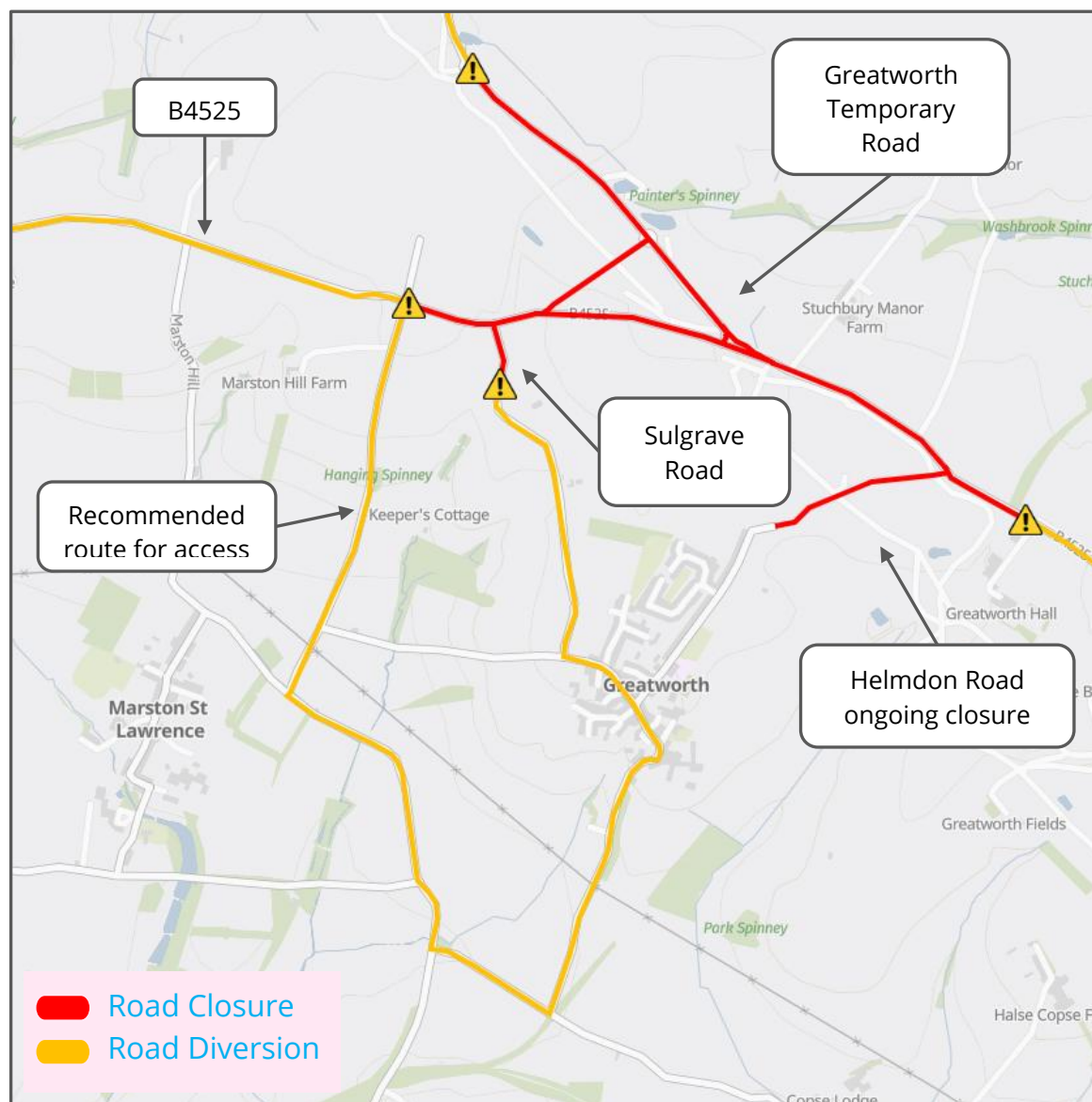
Diversion route

The map below shows the designated diversion routes for the B4525 and Greatworth Temporary Road during the closure. Please see next page for a detailed map of the closure area near Greatworth.



Diversion route

The map below shows the closure on the B4525, the Greatworth Temporary Road and the recommended diversion routes for access to and from Greatworth village to the B4525 during the closure.



Please contact us if you'd like a free copy of this document in large print, Braille, audio or 'easy read' format. You can also contact us for help and information in a different language.

Holding us to account

If you are unhappy for any reason, you can make a complaint by contacting our HS2 Helpdesk team. For more information, visit: www.hs2.org.uk/how-to-complain

We have an independent Residents' and Construction Commissioner who helps settle disputes and monitors the way in which we manage and respond to complaints about construction.

For more information visit: www.hs2.org.uk/independent-commissioner