

Railway improvement work in your area

Community Relations
1st Floor,
One Eversholt Street
London NW1 2DN

Dear Neighbour,

Upcoming work in your area

What's happening?

We're upgrading the railway near you to support the construction of High Speed Two (HS2) — Britain's new high-speed railway. This letter provides details of where and when we'll be working over the next few months, including a reminder of our Christmas works between 24–27 December

Work to connect the Great Western Main Line with a new Old Oak Common station

Network Rail is working in partnership with HS2 to prepare the existing railway for the construction of HS2. This involves realigning sections of track, overhead wires, signalling and other vital rail systems to connect the Great Western Main Line railway to a new station being built by HS2 at Old Oak Common. Our work to prepare and move parts of the railway for HS2 will continue over several years.

When and where are we working?

On the reverse of this letter, you'll find a map along with dates and times of planned works. We will move along the railway, so we won't be working next to individual properties continuously. At times, we'll need to use lighting and floodlights during night-time work..

Electrification: What do we mean by piling, masts and overhead wires?

Our website provides clear explanations of these activities. Scan the QR code or visit <https://bit.ly/rail-electrification> for more details.



We're sorry if our work causes any disturbance. It may be noisy at times, and bright lights may be used occasionally, but we'll make every effort to minimise disruption.

If you have any queries about the work, please telephone our 24-hour national helpline on 03457 11 41 41 or email NRHS2@networkrail.co.uk. Please use the reference at the start of this letter.

If you have any questions about the HS2 project or HS2 construction work, please contact the HS2 helpdesk on 08081 434 434 or email HS2enquiries@hs2.org.uk

Yours sincerely

Community Relations Team

Sign up to stay in the know about
rail work happening near your home.

Rail Work
Near Me



Scan the QR code or
go online to receive
email updates.
[networkrail.co.uk/
RailWorkNearMe](https://networkrail.co.uk/RailWorkNearMe)



Christmas 2025 Where & When

What's happening	Who is working	Dates & times of our work
	Map Area: 1	
Installation of new overhead electrification wires. (How we power trains and signalling)	Network Rail	(Wed-Sat) 2200-1000 (continuous) 24 - 27 Dec (Sat-Sun) 1800-1000 27-28 Dec
	Map Area: 2	
Installation of cable routes. Placing ground cables for signalling.	Network Rail in partnership with HS2	(Wed-Sat) 2200-1000 (continuous) 24 - 27 Dec (Sat-Sun) 2200-0900 27-28 Dec (Mon-Fri) 2300-0500 29 Dec-02 Jan
	Map Area: 4	
Installation of new overhead line structures & new electrification wires. (How we power trains and signalling)	Network Rail in partnership with HS2	(Wed-Sat) 2200-1000 (continuous) 24 - 27 Dec (Sat-Sun) 2200-0900 27-28 Dec

Jan – March 2026 Where & when

What's happening	Who is working	Dates & times of our work
	Map Area: 1	
Installation of new overhead electrification wires. How we power trains and signalling structures.	Network Rail in partnership with HS2	(Sat-Sun) 2200-0900 07-08, 28 Feb-01 Mar, 07-08, 14-15, 28-29 Mar
Installation of new lineside signs, fences, lights, electrical cupboards & walkways. Putting in/replacing the railway equivalent of traffic signs & speed limits & creating walking routes that are safe for staff. Installing the power cabinets for the signalling equipment.		(Sat-Mon) 2200-0500 24-26 Jan, 31 Jan-02 Feb (Mon-Fri) 2300-0500 12-16 Jan, 02-06, 09-13, 23-27 Feb, 09-13 Mar
	Map Area: 2	
Installation of new overhead electrification wires. How we power trains and signalling structures.	Network Rail in partnership with HS2	(Sat-Sun) 2200-0900 10-11 Jan, 07-08 Feb, 14-15, 21-22 Mar, 28-29 Mar
Installation of new lineside signs, fences, lights, electrical cupboards & walkways. Putting in/replacing the railway equivalent of traffic signs & speed limits & creating walking routes that are safe for staff. Installing the power cabinets for the signalling equipment.		(Sat-Mon) 2200-0500 17-19, 24-26 Jan, 31 Jan-02 Feb, 14-16 Mar (Mon-Fri) 2300-0500 12-16 Jan, 02-06, 09-13, 23-27 Feb, 09-13 Mar

Jan – March 2026 Where & when		
What's happening	Who is working	Dates & times of our work
	Map Area: 3	
Installation of new track, drainage & signalling systems. Laying new rails, drains & signalling equipment. Installation of new overhead line equipment including structures & wires. How we supply power for the trains and run the traffic light system for the railway. Delivery/collection of railway materials. Delivering and collecting of materials used by the railway.	Network Rail in partnership with HS2	(Sat-Sun) 2200-0900 14-15, 21-22 Mar (Mon-Fri) 2300-0500 23-27 Mar, 30 Mar-03 Apr (Mon-Fri) 0800-1700 05 Jan-03 Apr
	Map Area: 4	
Installation of new track, drainage & signalling systems. Laying new rails, drains & signalling equipment. Installation of new overhead line equipment including structures & wires. How we supply power for the trains and run the traffic light system for the railway. Delivery/collection of railway materials. Delivering and collecting of materials used by the railway.	Network Rail in partnership with HS2	(Sat-Sun) 2200-0900 14-15, 21-22 Mar (Sat-Mon) 2200-0500 24-26 Jan (Mon-Fri) 2300-0500 16-20 Mar, 30 Mar-03 Apr (Mon-Fri) 0800-1700 16 Feb-03 Apr
	Map Area: 5	
Installation of new track, drainage & signalling systems. Laying new rails, drains & signalling equipment. Installation of new overhead line equipment including structures & wires. How we supply power for the trains and run the traffic light system for the railway. Installation of cable routes. Placing ground cables for signalling.	Network Rail in partnership with HS2	(Sat-Sun) 2200-0900 03-04, 10-11 Jan, 07-08, 14-15, 21-22 Feb, 28 Feb-01 Mar, 07-08, 14-15, 21-22, 28-29 Mar (Sat-Mon) 2200-0500 17-19, 24-26 Jan, 31 Jan-02 Feb, 14-16 Mar (Mon) 0001-0500 19 Jan (Sat) 0001-0500 24 Jan (Mon-Fri) 2300-0500 12-16, 19-23 Jan, 02-06 Feb
	Map Area: 6	
Railway access compound. Operation of our small railway access compound, including deliveries/collections.	Network Rail in partnership with HS2	May be accessed at any time, but mostly active during weekday day-time and alternate Saturday nights.

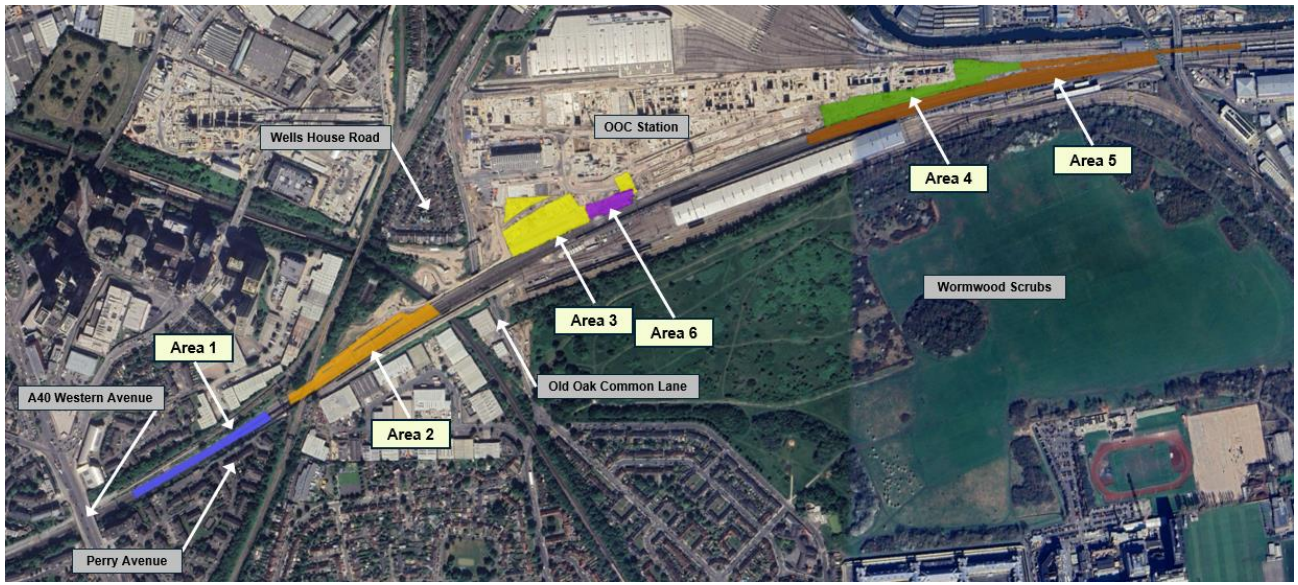


Figure 1 Map of work areas