

Notice of partial road closure on A47 Heartlands Parkway

HS2-BBV-25-1570

Location

A47 Heartlands Parkway from Aston Church Road Roundabout to Nechells Parkway

Duration

Throughout the winter into 2026 from 8.00pm to 6.00am

What we are doing

As we build the new high speed railway line in Birmingham, we need to rebuild the existing overbridge on Aston Church Road. This is due to the existing bridge not having enough headroom for the new HS2 trains to pass underneath.

To rebuild the bridge, Aston Church Road is currently closed to all vehicles.

What to expect

To keep traffic moving in the area cars will be diverted along A47 Heartlands Parkway, Saltley Viaduct and Washwood Heath Road. Access to businesses and properties will be maintained.

We are committed to keeping you informed about work on HS2. This includes ensuring you know what to expect and when to expect it, as well as how we can help you. Should you have any questions or concerns about our works you can contact us by:



Freephone **08081 434 434**



Minicom **08081 456 472**



Email **HS2enquiries@hs2.org.uk**



Writing to **FREEPOST
HS2 Community Engagement**



Website **www.hs2.org.uk**

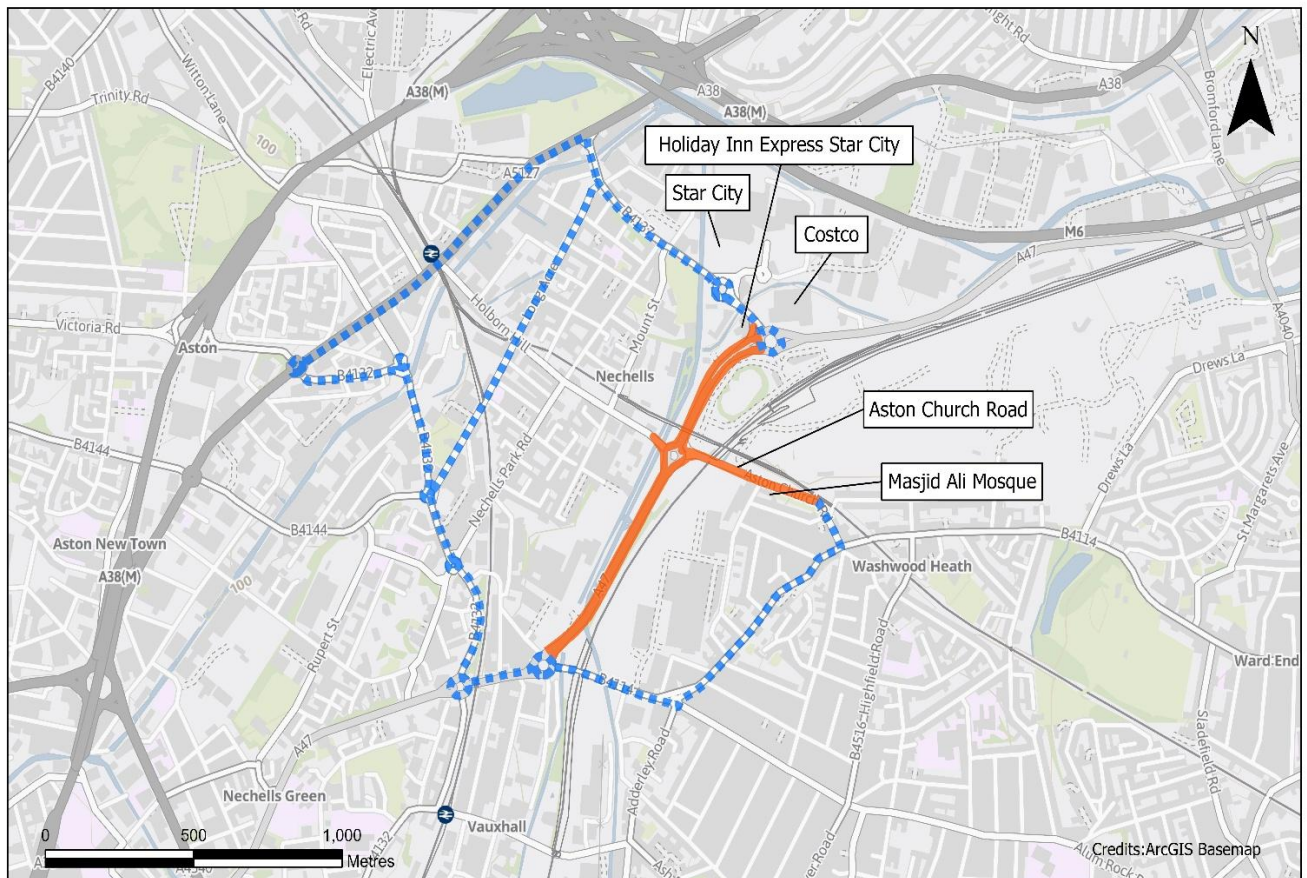
Keep up to date with what is happening in your local area at

**[www.hs2.org.uk/in-your-area/
in-your-area-map/](http://www.hs2.org.uk/in-your-area/in-your-area-map/)**

Diversion Route

To keep traffic moving in the area cars will be diverted along A47 Heartlands Parkway, Saltley Viaduct and Washwood Heath Road.

Access to businesses and properties will be maintained.



- Lane Closure
- - - Diversions

Date: 08/08/2024

Scale: 1:15,000

Closure of lanes on Aston Church & Star City roundabout_INC000004827606_WM_BO

Please contact us if you'd like a free copy of this document in large print, Braille, audio or 'easy read' format. You can also contact us for help and information in a different language.

Holding us to account

If you are unhappy for any reason, you can make a complaint by contacting our HS2 Helpdesk team. For more information, visit: www.hs2.org.uk/how-to-complain

We have an independent Residents' and Construction Commissioner who helps settle disputes and monitors the way in which we manage and respond to complaints about construction.

For more information visit: www.hs2.org.uk/independent-commissioner