

# Whielden Lane, Amersham footpath works

**HS2-ALIGN-25-1432**

## Location

Footpath on Whielden Lane, adjacent to the Amersham Vent Shaft site.

## Duration

These works will begin on 17 November and continue through to 30 November. Works will take place between the hours of 8am and 5pm.

## What we are doing

Operatives will be undertaking works and a final review of completed footpath to ensure all elements meet design and quality standards. This routine activity helps confirm that finishes and fittings are delivered to a high standard ahead of handover.

## What to expect

Operatives to be working on the permanent footpath of Whielden Lane outside of site. A temporary footpath will be in place to allow pedestrian access with signage and barriers.

We are committed to keeping you informed about work on HS2. This includes ensuring you know what to expect and when to expect it, as well as how we can help you. Should you have any questions or concerns about our works you can contact us by:



Freephone **08081 434 434**



Minicom **08081 456 472**



Email **HS2enquiries@hs2.org.uk**



Writing to **FREEPOST  
HS2 Community Engagement**



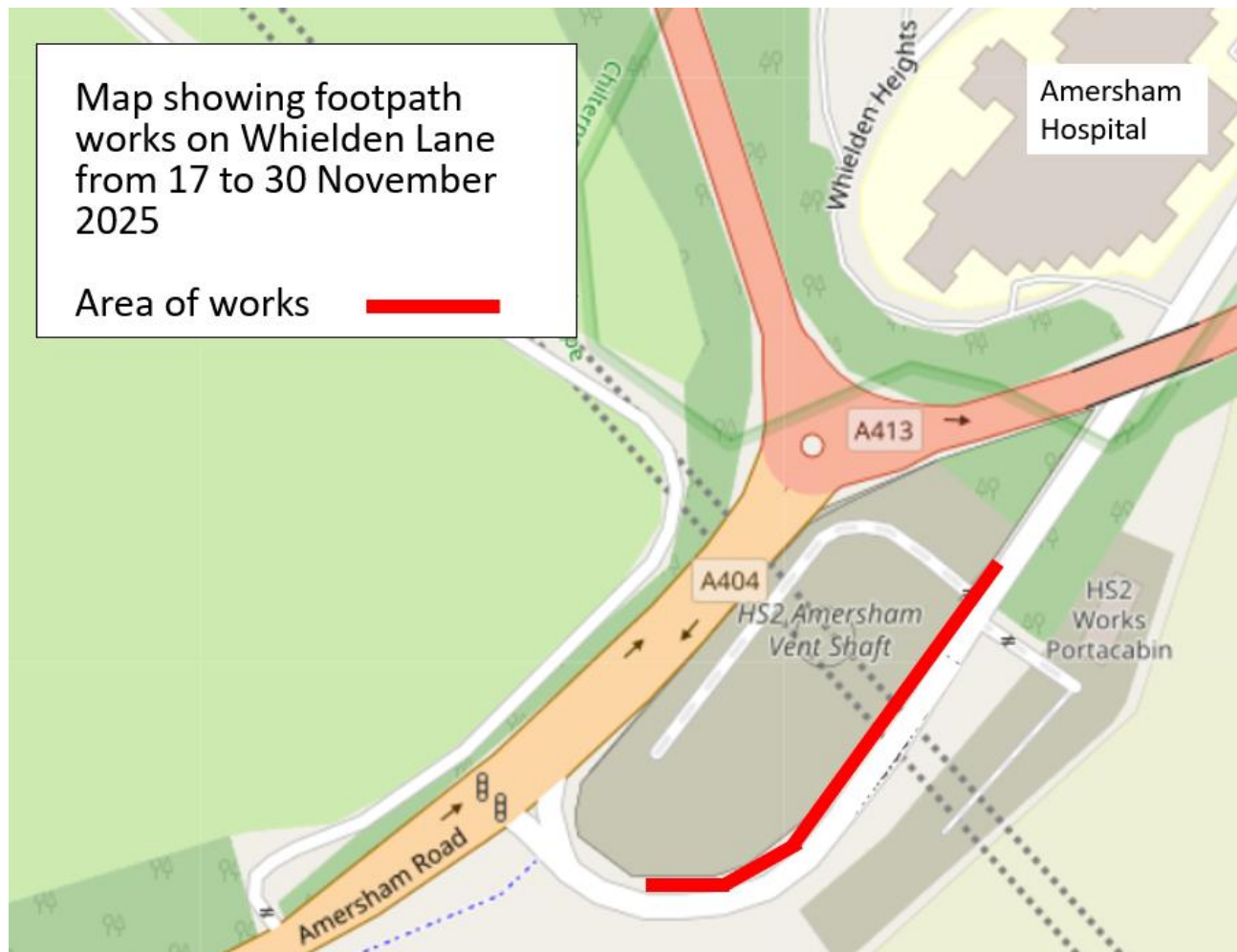
Website **www.hs2.org.uk**

Keep up to date with what is happening in your local area at

**[www.hs2.org.uk/in-your-area/  
in-your-area-map/](http://www.hs2.org.uk/in-your-area/in-your-area-map/)**

## Where we will be working

Please see map below showing area of works:



Please contact us if you'd like a free copy of this document in large print, Braille, audio or 'easy read' format. You can also contact us for help and information in a different language.

## Holding us to account

If you are unhappy for any reason, you can make a complaint by contacting our HS2 Helpdesk team. For more information, visit: [www.hs2.org.uk/how-to-complain](http://www.hs2.org.uk/how-to-complain)

We have an independent Residents' and Construction Commissioner who helps settle disputes and monitors the way in which we manage and respond to complaints about construction.

For more information visit: [www.hs2.org.uk/independent-commissioner](http://www.hs2.org.uk/independent-commissioner)