

Contact our HS2 Helpdesk team on **08081 434 434**

HS2 Traffic Management Update

Old Oak Common Lane | October – December 2025

High Speed Two (HS2) is the new high speed railway for Britain. BBVS is the contractor working on behalf of HS2 to construct the Old Oak Common Station.

Traffic Management update

As we continue with the construction programme at the Old Oak Common station site, we will be working along Old Oak Common Lane **between October and December 2025**. We need to manage traffic safely around our works to replace utility services.

We anticipate traffic on Old Oak Common Lane will be heavier than usual over the next few months and we strongly encourage you to regularly check in online or via our community noticeboards for updates.

Please find further information about these activities and their effects in this newsletter.

A number of these works are subject to approvals from the local authorities and/or could be subject to late changes. We will let you know of any changes via the HS2 website and email notifications.

You can register to receive email updates here:

<https://www.hs2.org.uk/in-your-area/local-community-webpages/hs2-in-old-oak-and-north-acton/>



Duration of works

October to December 2025

What to expect

Temporary one-way roads, parking bay suspensions and footpath closures.

Additional traffic on local roads and noise from equipment.

What we will do

We will work hard to reduce the impact of our works.

We will update the HS2 website with any changes.

Works scheduled from October 2025

Utility works to the north on Old Oak Common Lane

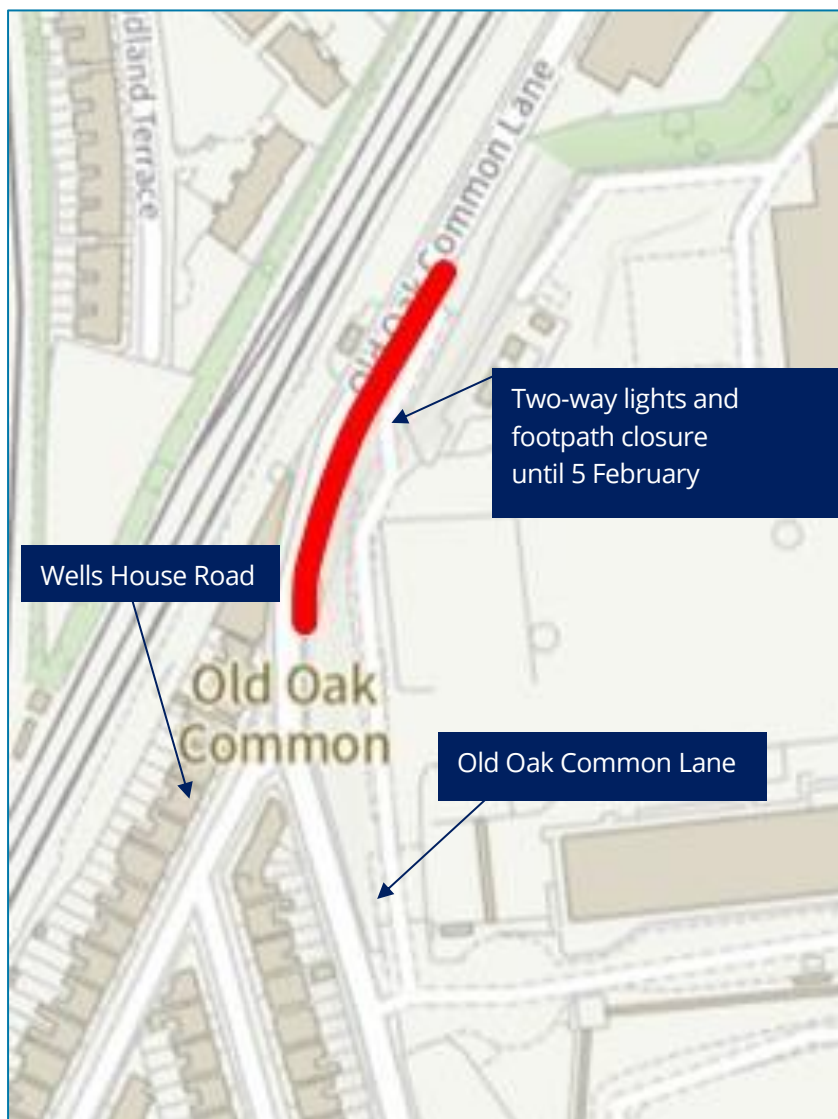
Temporary two-way traffic lights are in place and the eastern footpath, opposite Kildun Court, will be closed until **Thursday 5 February**. This work is in part to divert the route of a major Thames Water main under Old Oak Common Lane and is complex. There are also contractors working on the northern road realignment (see later in this newsletter) which is why the traffic management must stay in place.

We are installing new sections of pipe, building concrete supports for the pipe and carrying out connection work, while keeping London's water supply running without interruption.

Christmas closure at Old Oak Common station

The above traffic management system needs to remain in place over the Christmas period to ensure safety around exposed works. The station site is closed for the season from Wednesday 24 December until Friday 2 January.

To further mitigate disruption, the traffic lights at our site entrance will go into sleep mode when not used.



Map showing location of temporary traffic lights at the northern end of Old Oak Common Lane until Thursday 5 February

Extending the lane closure on Old Oak Common Lane

We are diverting gas and water supplies and changing old, cast-iron pipes for modern plastic pipes. There will be no interruption to supply for the community. The traffic management described on this page will continue until **Sunday 7 December**.

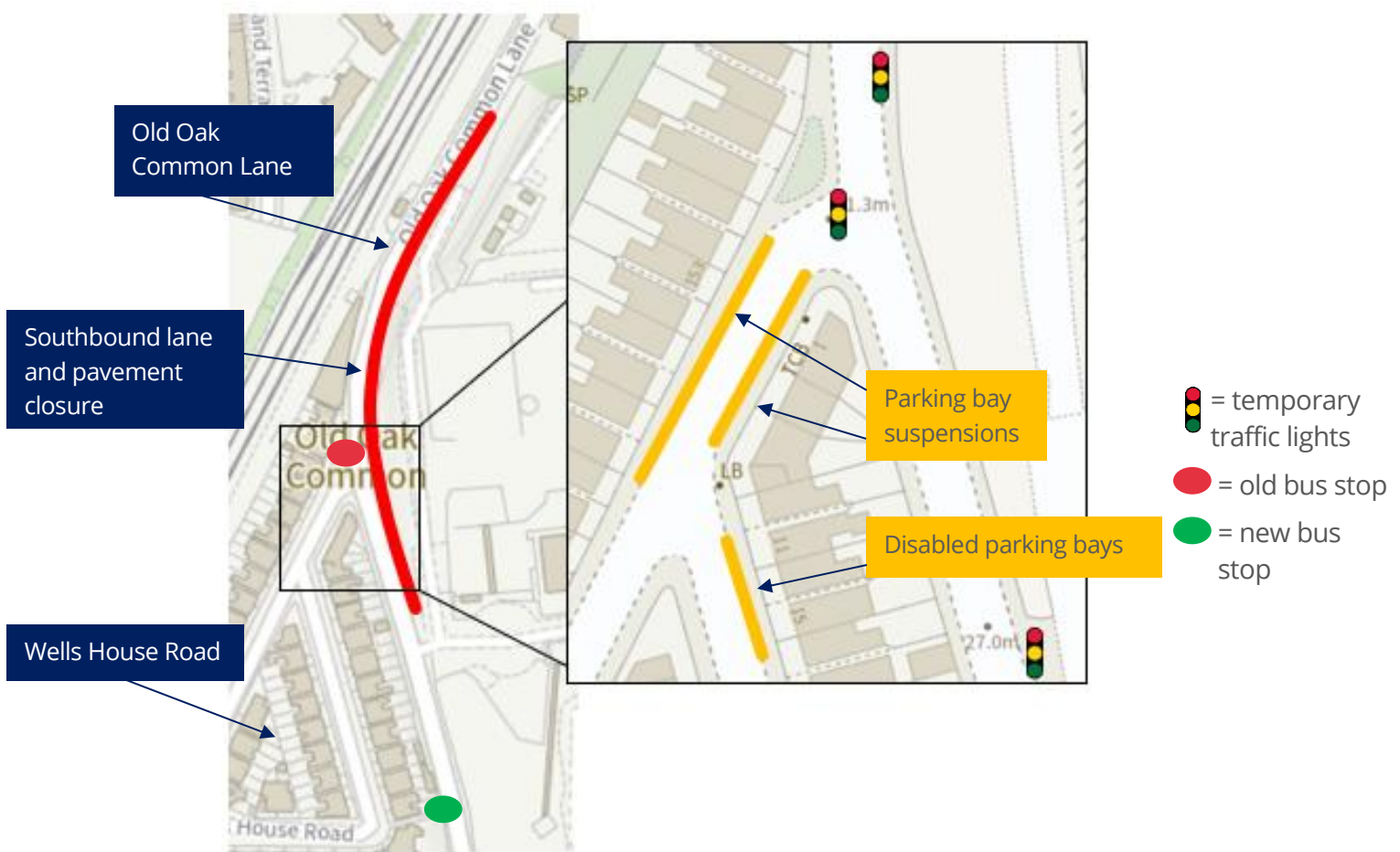
This work includes:

- Four-way traffic lights with Wells House Road, the station site entrance and Old Oak Common to the north and to the south
- Parking bay suspensions; one disabled parking bay has been temporarily moved. We have been in touch with residents whose parking bays are restricted about mitigations
- Landscape area at the entrance of the road has been removed and we will be in touch with residents about plans for how the space will look from spring
- Bus stop at Wells House Road temporarily moved to south of station site entrance.

We apologise for the longer delays to traffic as a result of the four-way lights.

Signs in the area will advise through traffic to use alternative routes.

Please note that dates are subject to change.

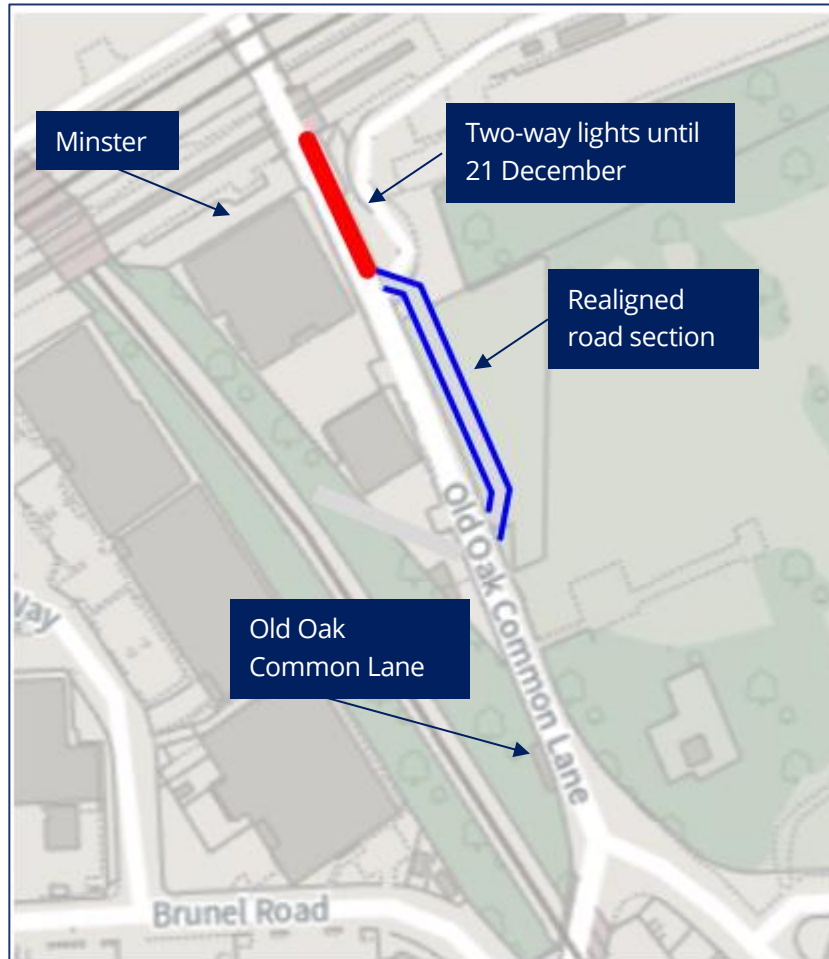


The temporary traffic arrangements above will be in place until 7 December.

Works scheduled in December 2025

Utility works to the south on Old Oak Common Lane

From **Sunday 7 December to Sunday 21 December 2025**, there will be temporary two-way traffic lights in place while Cadent Gas connect gas mains.



The temporary traffic arrangements above will be in place until 21 December.

Realignment updates 2025

Temporary northern realignment of Old Oak Common Lane

We need to connect pipes and cables within our site to existing utilities in Old Oak Common Lane. To help keep traffic flowing while we work, two sections of the road will be temporarily realigned to run through our site. This allows work to continue on Old Oak Common Lane itself.

We released information on the realignments in our July newsletter, available here:

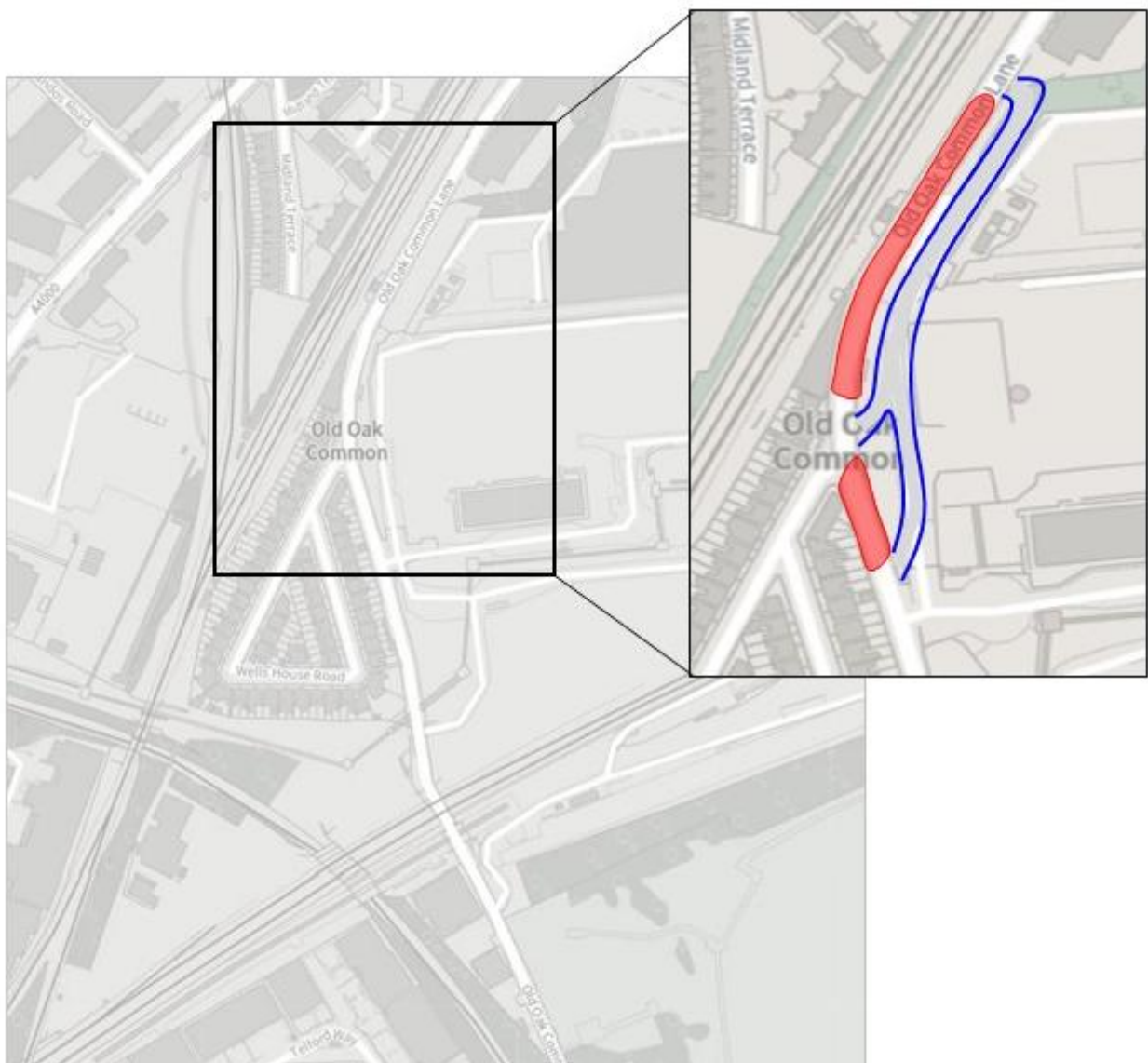
<https://assets.hs2.org.uk/wp-content/uploads/2025/07/Final-version-OOCL-newsletter-july-2025-OOCL-road-realignment-update-18-September.pdf>

The southern realignment is operational and we are now constructing the northern section of realigned road, which will also run inside the boundary of our site. This temporary road is planned to be operational from early February 2026 and will be in use for two years. Normal access for traffic, buses and pedestrians will be maintained. We will be hosting a drop in event about the northern realignment in early January 2026 and details of this will be circulated before the end of the year.

There will be two weekends when Old Oak Common Lane will be closed to allow the new and existing stretches of road to be connected. We are sharing details of these closures as they become available.

They are also on our website: <https://www.hs2.org.uk/work-items/upcoming-weekend-road-closures>

A general view of the temporary northern diversion is provided in the map below.



Map showing location of temporary realignment of Old Oak Common north from February 2026.

Keeping you informed

We are committed to keeping you informed about work on HS2. This includes ensuring you know what to expect and when to expect it, as well as how we can help you.

The Residents' Commissioner

The independent Residents' Commissioner oversees and monitors our commitments to you.

The commissioner's reports and our responses can be found at www.gov.uk/government/collections/hs2-ltd-residents-commissioner

The Residents' Commissioner makes sure we fulfil the commitments in the HS2 Community Engagement Strategy (<https://bit.ly/3oOA25j>).

The Residents' Commissioner can be contacted on: residentscommissioner@hs2.org.uk

Construction Commissioner

The independent Construction Commissioner regularly meets our Chief Executive Officer to raise any concerns or emerging trends across HS2.

The Construction Commissioner's role has been developed to monitor the way we manage and respond to construction complaints.

The commissioner mediates on disputes about construction, involving individuals and organisations, that we can't resolve. The commissioner advises members of the public about how to make a complaint about construction.

The Construction Commissioner can be contacted on: complaints@hs2-cc.org.uk

Property and compensation

You can find out about HS2 and properties along the route by visiting:

www.gov.uk/government/collections/hs2-property

Find out if you can claim compensation at:

www.gov.uk/claim-compensation-if-affected-by-hs2

Holding us to account

If you are unhappy for any reason you can make a complaint by contacting the HS2 Helpdesk. For more details on our complaints process, please visit:

www.hs2.org.uk/in-your-area/contact-us/how-to-complain/

Contact us

Contact our HS2 Helpdesk team all day, every day of the year on:

 Freephone **08081 434 434**

 Minicom **08081 456 472**

 Email **HS2enquiries@hs2.org.uk**

Write to:

FREEPOST

HS2 Community Engagement

Website **www.hs2.org.uk**

To keep up to date with what is happening in your local area, visit:
www.HS2inyourarea.co.uk

Please contact us if you'd like a free copy of this document in large print, Braille, audio or 'easy read' format. You can also contact us for help and information in a different language.

HS2 Ltd is committed to protecting personal information. If you wish to know more about how we use your personal information please see our Privacy Notice:

<https://www.gov.uk/government/publications/high-speed-two-ltd-privacy-notice>

Reference number: HS2-OOC - SCP-25-1277 High Speed Two (HS2) Limited, registered in England and Wales.

Registered office: Two Snowhill, Snow Hill Queensway, Birmingham B4 6GA.

Company registration number: 06791686. VAT registration number: 888 8512 56