

Contact our HS2 Helpdesk team on **08081 434 434**

# HS2 Update

Twyford to Greatworth | Autumn 2025

**EKFB**  
Working in  
partnership with  
**HS2**

High Speed Two (HS2) is the new high-speed railway for Britain. You can sign up for regular updates in your local area at [www.hs2inyourarea.co.uk](http://www.hs2inyourarea.co.uk)

## Inside our Autumn newsletter

Our newsletters are a valuable tool used to update local communities on the progress of the HS2 project. This newsletter has been created specifically for the Twyford to Greatworth (T2G) construction area, located between Twyford in North Buckinghamshire and Greatworth in Northamptonshire.

It includes the latest information on upcoming construction activities and expected timelines while also highlighting our efforts to support local communities.

In this edition of our newsletter, we will be covering the milestones we have achieved and the upcoming works for the next few months. This will include updates on:

- EKFB Project manager update
- A422
- A43
- Radstone road
- A421 and A4421
- Social value projects
- HS2 Reset



## Drop-in event

### Meet the Team

**Date:** 12 November 2025

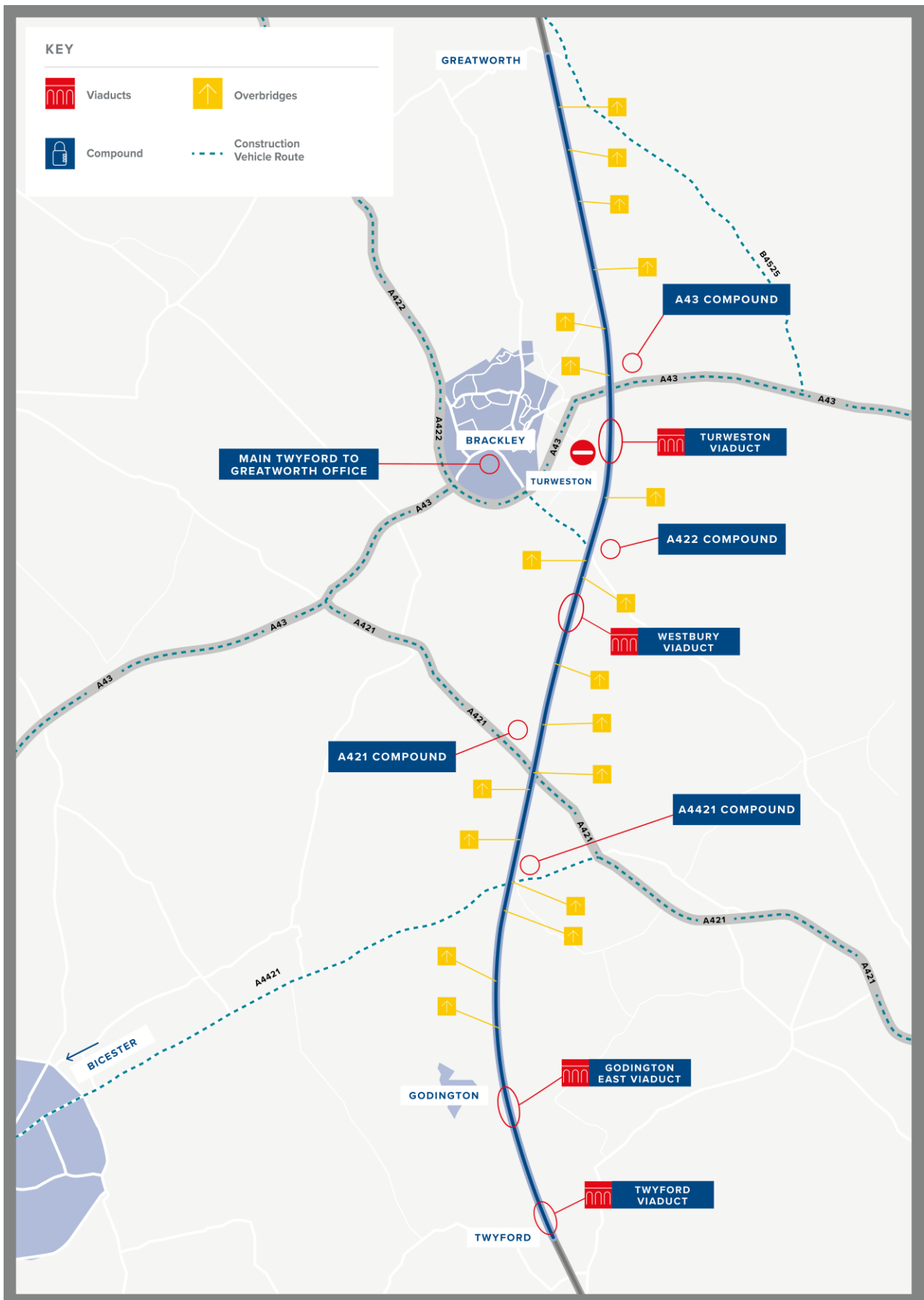
**Time:** 4pm to 7pm

**Place:** Egerton Hall,  
Brackley

Please come along and meet members of the T2G teams including, environment, delivery, engineers, community engagement and more.



## Twyford to Greatworth – Route Map





## EKFB Project Manager update

Our EKFB teams are working tirelessly on one of the busiest phases of the project between Twyford and Greatworth. Over the coming nine months, we will be delivering around ten bridges in close partnership with the three local councils and eleven statutory undertakers. These bridges include important connections such as School End, the A4421, A421, Featherbed Lane, A422, Turweston Green and Radstone Road, among others.

These structures are essential to maintaining local connectivity, ensuring that communities remain linked both during and after construction. While this is only a part of the wide range of work taking place along the HS2 route, it is a very visible sign of the progress being made.

We know that traffic management can sometimes cause inconvenience, and we truly appreciate the patience of local residents, businesses and road users. The good news is that significant improvements are expected to start before the end of this year. Looking further ahead, by March 2026, we expect the impact of traffic management on everyday journeys to be minimal.

Our goal is to build the infrastructure needed for the future, while working responsibly today. We remain committed to keeping communities informed, reducing disruption wherever possible, and delivering the new high-speed railway for Britain.

We would like to thank the local community for their continued patience, understanding and support as we move forward together on this important project.

- **Jean-Baptiste Riviere – Highways and Utilities Project Manager**



## A422, Westbury

### What's next?

After a successful bridge lift earlier this year construction has been progressing on the overbridge. There has been traffic lights outside the EKFB compound to facilitate utilities works. This has included re-routing underground services and creating new utility connections. We appreciate your patience while these works take place.

The works left to open the new bridge include construction of the reinforced concrete deck. This will be followed by the installation of the concrete sides (102 parapets). Once waterproofing is completed, we will be installing utilities along the upper deck.

The final steps will be the highway works. This includes kerbing, road surfacing, road signs and vehicle restraint systems. The new road will then be tied into the existing road, ready for people to drive over the new bridge.

We are aiming for the public to drive on the new bridge in the spring of 2026. The temporary bridge that is currently being used will then be removed.



A422 overbridge

## A43, Brackley

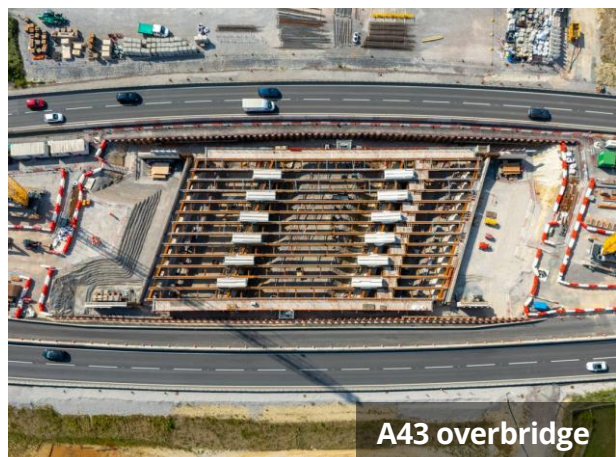
### Looking ahead

In April, all steel beams were lifted into place onto our new bridge at the A43 site. Since then, construction has been progressing well and continues into the winter months.

Last month we completed our final deck pour on the bridge. Once the deck has cured, we will be able to start the parapet (sides of the bridge) installation. While we are installing the parapets onto the bridge, we will be installing two culverts on each side of the bridge. Culverts are designed to allow water to pass under roads/ railways.

The carriageway reconstruction is the final stage of construction. This will include the approach and departure of the bridge, drainage, vehicle restraint systems, kerbs, asphalt, joints and service ducts.

We plan to have the new bridge open in early 2026. To facilitate this there will be weekend road closures on the A43 but we will aim to keep disruption to a minimum. Once we know the dates of the closures, we will update you.



A43 overbridge

## Upcoming works



### **Radstone Road, Radstone**

We will be closing Radstone Road starting Monday 6<sup>th</sup> October. During the closure we will be carrying out permanent tie-in works to move traffic onto the new road alignment. The works we will be completing during this road closure will include drainage, earthworks and road surfacing.

Due to safety reasons and the narrow width of the road, these works will require a full road closure. The road will be open for pedestrians and cyclists however, we ask cyclists to dismount when travelling through the works area.



### **A421, Mixbury**

Utilities within the new realignment are nearly complete with the bridge deck works and kerb installation progressing well. We plan for pavement installation and signage work to be completed by the end of October 2025. The road will then open in a temporary condition with traffic driving over the new structure. We will still need traffic management in place while we remove the old road and complete the final connections. A total road closure will be needed in early 2026 so the final pavement and road marking finishing works can be completed.



### **A4421, Newton Purcell**

We have been working on utilities, drainage and carriageway construction on the west tie-in. The traffic management has recently been moved to the east tie-in as planned; we can now complete the same works on this side. At the east embankment, the approach to the structure and drainage has been completed. The utilities contractor has started work in the area to install power and communication lines. Construction on the bridge deck, including the installation of roadside edges (kerbs) and utility systems, began in early September 2025. The A4421 is due to open to the public in temporary conditions in December 2025 over the new structure. We will still need traffic management in place while we remove the old road and complete the final connections.



## Social value – Whitfield healing stones

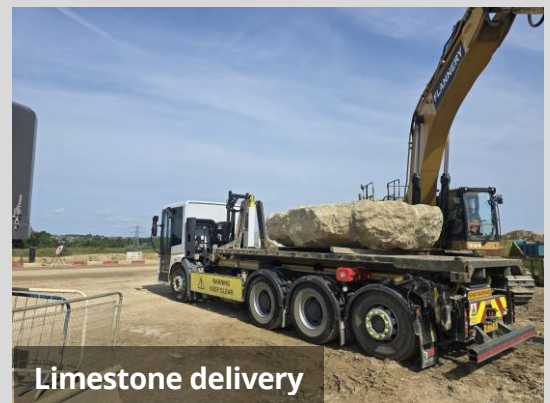
As one of our social value projects this year, we were happy to support a local business with an exciting new mental health project. The Mill Farm Retreat in Whitfield spent months planning the creation of a healing circle. They requested some stones from HS2 to help them create their own version of Stonehenge.

The T2G team were delighted to be able to assist and provided 40 limestone chunks, carefully selected so they were a suitable size and shape. The limestone came from our very own Turweston cutting. The stones would normally be crushed into smaller pieces and reused onsite. The limestone was transported by our team from site to the farm.

Emma from The Mill Farm Retreat was delighted with the stones arrival and had this to say:

“Where do I begin? This week has been like a dream, the fulfilment of months of planning, hoping and waiting which has come to full fruition with the arrival of the amazingly beautiful healing stones. I’m still pinching myself! The EKFB drivers have been so professional and kind, and full of enthusiasm for the project.”

## See the stones for yourself....



# HS2 reset news

## Updates

Mark Wild was appointed as CEO of HS2 in December 2024. Mark is a rail infrastructure expert, who was brought in to put Crossrail on a successful path to opening in 2022. He is now reviewing HS2's costs and schedule as part of a 12-month reset of the programme. He carried out a similar process as chief executive of Crossrail, helping to put the project back on track and deliver a successful opening of the Elizabeth line in 2022.

### Reset timings

The reset is comprised of a series of stages and will be completed in 2026. HS2 Ltd is not standing still during the reset. This year, we are implementing a rigorous plan to focus on driving productivity and efficiency.

### The Spending Review

The multi-year financial settlement as set out in the Government's Spending Review – announced in June, provides greater certainty to the delivery of HS2 and lays the foundations for the reset.

The Spending Review document confirms HS2 Ltd.'s settlement as £25.3bn to progress the delivery of HS2 from Birmingham Curzon Street to London Euston. This multi-year financial settlement gives greater certainty to the delivery of HS2 and provides the foundations for the comprehensive reset of the project.

### Future updates

We shall continue to provide you with updates on the reset and what this means in terms of our plans in this area.



HS2 CEO; Sir Mark Wild OBE

# Keeping you informed

We are committed to keeping you informed about work on HS2. This includes making sure you know what to expect and when to expect it, as well as how we can help.

## Residents' and Construction Commissioner

The independent Residents' and Construction Commissioner oversees and monitors our **community engagement strategy**, making sure we fulfil our commitments to you.

The commissioner monitors the way we manage and respond to complaints about construction and advises members of the public how to make complaints.

The commissioner helps settle disputes involving individuals and organisations that we can't resolve.

You can find the commissioner's report and our responses at:  
[www.gov.uk/government/collections/independent-hs2-commissioner](http://www.gov.uk/government/collections/independent-hs2-commissioner)

The commissioner can be contacted on:  
[hs2commissioner@dft.gov.uk](mailto:hs2commissioner@dft.gov.uk)

## Property and compensation

You can find out all about HS2 and properties along the route by visiting:  
[www.gov.uk/government/collections/hs2-property](http://www.gov.uk/government/collections/hs2-property)

Find out if you're eligible for compensation at:  
[www.gov.uk/claim-compensation-if-affected-by-hs2](http://www.gov.uk/claim-compensation-if-affected-by-hs2)

## Holding us to account

If you are unhappy for any reason, you can make a complaint by contacting our HS2 Helpdesk team.

For more details on our complaints process, please visit our website:  
[www.hs2.org.uk/contact-us/how-to-complain](http://www.hs2.org.uk/contact-us/how-to-complain)

**Reference number: HS2-EKFB-25-1355**

## Contact us

Our HS2 Helpdesk team are available all day, every day. You can contact them by:

 Freephone **08081 434 434**

 Minicom **08081 456 472**

 Email [hs2enquiries@hs2.org.uk](mailto:hs2enquiries@hs2.org.uk)

Write to:

**FREEPOST**  
**HS2 Community Engagement**

Website [www.hs2.org.uk](http://www.hs2.org.uk)

To keep up to date with what is happening in your area, visit:

[www.hs2inyourarea.co.uk](http://www.hs2inyourarea.co.uk)

**Please contact us if you'd like a free copy of this document in large print, Braille, audio or easy read. You can also contact us for help and information in a different language.**

We are committed to protecting personal information. If you would like to know more about how we use your personal information, please see our privacy notice ([www.gov.uk/government/publications/high-speed-two-ltd-privacy-notice](http://www.gov.uk/government/publications/high-speed-two-ltd-privacy-notice))