

Contact our HS2 Helpdesk team on **08081 434 434**

HS2 Update

North Chilterns Area | Autumn 2025

EKFB
Working in
partnership with **HS2**

High Speed Two (HS2) is the new high-speed railway for Britain. Should you have any questions or enquiries regarding our works, please contact the Helpdesk details of which can be found in this newsletter. We will be keeping our local website <http://www.hs2inbucksandox.co.uk> up to date with information on our works in the local area



What's inside this newsletter

In this edition of the newsletter, we are reviewing the last few months and what is coming up:

- Key works updates
 - Rocky Lane underbridge and road reopening
 - Wendover green tunnel progress
 - Spring chamber update
- Traffic management requirements
- Construction updates
 - Low permeability wall installation
 - Grove Farm underbridge construction
 - Nash Lee overbridge
- Aerial footage
- Community and business funding
- Social value projects and community support
- HS2 reset news

Join us at our community events...

Over the year we run specific community events and drop-in sessions in our Mobile Visitor Centre and local village halls.

To find out where your next local event is taking place, please visit on the HS2 website for the latest information.

www.hs2.org.uk/events

Key works updates

Rocky Lane underbridge opening

In August, we celebrated a key milestone by opening the realignment of Rocky Lane. The new permanent alignment will allow for traffic to pass under the new railway.

The plant crossing with two-way traffic lights will remain in place to allow the movement of our plant vehicles along our site access road. With Rocky Lane reopened, the Leather Lane closure commenced in September to enable construction of the overbridge.



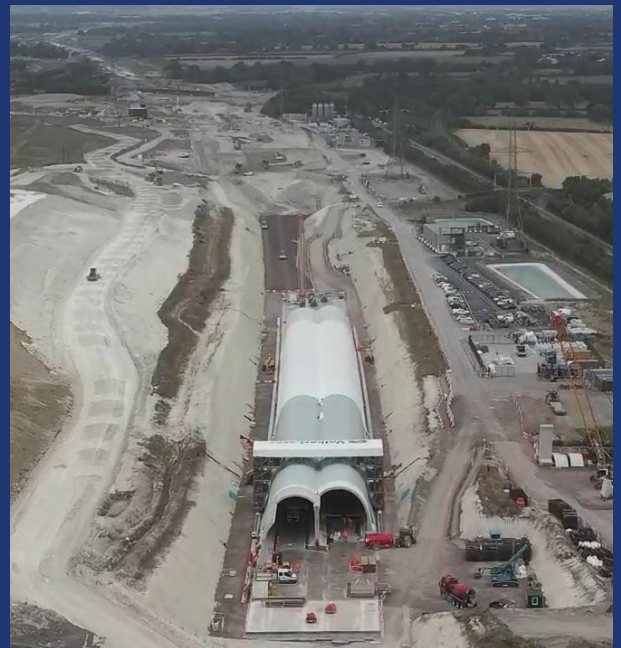
Rocky Lane underbridge and realignment following reopening

Wendover green tunnel progress

Construction of the Wendover green tunnel continues to progress well. Using a 'cut and cover' method, the tunnel is being cut into the chalk in this area and covered with topsoil and planted with local native species. As of September 2025, nearly 500 tunnel segments have been installed, forming the tunnel's structural base.

Work is also advancing on the tunnel's internal walls, with regular concrete pours helping shape the final form. Waterproofing, excavation and drainage works are ongoing across the site.

Once complete, the tunnel will be covered with earth and landscaped to blend into the surrounding countryside. The railway will then continue north through the Wendover north cutting and Nash Lee, before rising to cross the A4010 at Stoke Mandeville.



Wendover green tunnel, August 2025

Spring chamber update

We are progressing with plans to construct the spring flow chamber in the farmland northwest of Wendover, as part of the Wendover north cutting works. This chamber is essential for maintaining groundwater levels and flows, in line with the Environment Agency's requirements.

Following the refusal of the initial planning application from earlier this year, the need for a permanent access track has been challenged which significantly reduces the number of deliveries to the site and allows us to consider an alternative route on a temporary basis via Nash Lee End, avoiding the use of South Street and Dobbins Lane. This revised approach removes the need for a permanent access track and will reduce vehicle movements.

The Environment Agency has extended the required completion date to August 2026, allowing time for planning and engagement. We will be working closely with the local council and the community. Further updates will be shared through Wendover News and at upcoming community events.



Traffic management requirements

Over the next few months we will need to implement temporary traffic management to ensure we can complete all necessary construction activities safely for both road users and our workforce.

Below you can see a summary of what to expect in your area, further information will be communicated via email and the HS2 website (www.hs2.org.uk/route-map) and you can also come and see us at our events.

Location	Works	Traffic management
Rocky Lane (The Lee Parish Council)	Plant crossing	Two-way traffic management until late 2026
Small Dean Lane, temporary bridleway (Wendover Parish Council)	Grove Farm underbridge construction and general works in the Small Dean area	Closure extension of Small Dean Lane and temporary bridleway
A413 Wendover Bypass (Wendover Parish Council)	New entrance construction to Wendover green tunnel	Overnight traffic management (November - December 2025)

Construction updates

Low permeability wall installation at Nash Lee

We have completed construction of the low permeability wall at Wendover north cutting. The section beneath Nash Lee Road was installed over a four-week period, after which the road reopened in August.

Built in stages and anchored deep into the clay, the wall helps manage groundwater and reduce flood risk, protecting nearby brooks and supporting the long-term stability of the cutting.



Hydraulic excavator in operation during low permeability wall works in summer 2025

Grove Farm underbridge

Over spring and summer, the bridge deck at Grove Farm underbridge was installed and set. By August, all major concrete works for the side walls were completed. Following excavation underneath the bridge, the next phase will focus on building the inner wall. This top-down structure is on track to be completed by the end of the year.



Excavation underneath Grove Farm underbridge, August 2025

Small Dean Lane and the bridleway remain closed due to ongoing construction and heavy machinery in the area. Limited working space prevents a safe diversion route through Small Dean via Dunsmore. Access will reopen once conditions allow and when the permanent route is ready.

Nash Lee overbridge

Construction of the overbridge has continued to progress steadily throughout the year. Over the summer, steel beams were delivered to site via abnormal load deliveries. These beams form the backbone of the bridge deck.

The overbridge is being constructed offline, away from the existing road. This approach helps minimise disruption until the final phase, when Nash Lee Road will be realigned to carry vehicles over the new structure in late 2026.



Aerial view of Nash Lee overbridge, August 2025

EKFB aerial footage

One of the best ways to see the progress we are making on site is from our aerial footage. If you scan the QR code below, it will allow you to view the latest of HS2 works in your area.

The footage gives an annotated overview of where different structures will be found once HS2 is complete, along with an update of how the landscaping is currently looking.



Scan me!



Community and business funding

Are you a local community group or business that's looking for support from HS2?

The Community and Environment Fund (CEF) and the Business and Local Economy Fund (BLEF) schemes provide up to £40m of funding throughout the construction of HS2, supporting community-led projects.

The Funds also support initiatives that bring benefits to local communities, such as the provision of new community facilities or support for local heritage and culture. You can find more information about eligibility and how to apply on the HS2 website.

Alternatively, you can get in touch with your local Community Engagement Team to find out more information and support.

www.hs2.org.uk/in-your-area/community-funding/



Social value projects and community support

Chesham Grammar School

For the third year running, EKFB hosted an interactive STEM-led activity at Chesham Grammar School. The year 8 students learnt more about the world of civil engineering and took part in a competition to build a bridge using sticks to see which structure was the sturdiest. Well done to all the pupils who took part!



EKFB team at Chesham Grammar School

Litter pick in Wendover

In August, EKFB teamed up with Wendover Parish Council for a community litter pick, covering areas including London Road, South Street, Bacombe Lane, and Ellesborough Road. We're proud to have worked alongside the Parish Council to make a positive impact in the community.



Community litter pick in Wendover

Make Wendover Smile support

At Wendover's produce market in May, EKFB Supported the Parish Council's "Make Wendover Smile" campaign. EKFB handed out sunflower plants and seeds for replanting, contributing to the enhancement of green spaces around the community.



Handing out sunflowers and seeds in Wendover

YardFest donation

We are proud to have supported this year's YardFest festival in Wendover, an event designed to bring the Wendover community together and showcase the incredible talent and creativity of local businesses.



YardFest festival in Wendover, July 2025

HS2 reset news

Mark Wild was appointed as CEO of HS2 in December 2024. Mark is a rail infrastructure expert, who was brought in to put Crossrail on a successful path to opening in 2022.

He is now reviewing HS2's costs and schedule as part of a 12-month reset of the programme. He carried out a similar process as chief executive of Crossrail, helping to put the project back on track and deliver a successful opening of the Elizabeth line in 2022.

Reset timings

The reset is comprised of a series of stages and will be completed in 2026.

HS2 Ltd is not standing still during the reset. This year, we are implementing a rigorous plan to focus on driving productivity and efficiency.

The Spending Review

The multi-year financial settlement as set out in the Government's Spending Review - announced in June, provides greater certainty to the delivery of HS2 and lays the foundations for the reset.

The Spending Review document confirms HS2 Ltd's settlement as £25.3bn to progress the delivery of HS2 from Birmingham Curzon Street to London Euston. This multi-year financial settlement gives greater certainty to the delivery of HS2 and provides the foundations for the comprehensive reset of the project.

Future updates

We shall continue to provide you with updates on the reset and what this means in terms of our plans in this area.



HS2 CEO; Sir Mark Wild OBE

Keeping you informed

We are committed to keeping you informed about work on HS2. This includes making sure you know what to expect and when to expect it, as well as how we can help.

Residents' and Construction Commissioner

The independent Residents' and Construction Commissioner oversees and monitors our **community engagement strategy**, making sure we fulfil our commitments to you.

The commissioner monitors the way we manage and respond to complaints about construction and advises members of the public how to make complaints.

The commissioner helps settle disputes involving individuals and organisations that we can't resolve.

You can find the commissioner's report and our responses at:
www.gov.uk/government/collections/independent-hs2-commissioner

The commissioner can be contacted on:
hs2commissioner@dft.gov.uk

Property and compensation

You can find out all about HS2 and properties along the route by visiting:
www.gov.uk/government/collections/hs2-property

Find out if you're eligible for compensation at:
www.gov.uk/claim-compensation-if-affected-by-hs2

Holding us to account

If you are unhappy for any reason, you can make a complaint by contacting our HS2 Helpdesk team.

For more details on our complaints process, please visit our website:
www.hs2.org.uk/contact-us/how-to-complain

Reference number: HS2-EKFB-25-1285

High Speed Two (HS2) Limited, registered in England and Wales.
Registered office: Two Snowhill, Snow Hill Queensway, Birmingham B4 6GA.
Company registration number: 06791686. VAT registration number: 888 8512 56

Contact us

Our HS2 Helpdesk team are available all day, every day. You can contact them by:

 Freephone **08081 434 434**

 Minicom **08081 456 472**

 Email **hs2enquiries@hs2.org.uk**

Write to:

FREEPOST
HS2 Community Engagement

Website **www.hs2.org.uk**

To keep up to date with what is happening in your area, visit:

www.hs2inyourarea.co.uk

Please contact us if you'd like a free copy of this document in large print, Braille, audio or easy read. You can also contact us for help and information in a different language.

We are committed to protecting personal information. If you would like to know more about how we use your personal information, please see our privacy notice (www.gov.uk/government/publications/high-speed-two-ltd-privacy-notice)