

SKANSKA



STRABAG

Working in
partnership with

HS2

Update: Kildun Court protection works, Old Oak Common

HS2-SCS-26-1746

Location

Kildun Court, Old Oak Common

Duration

Access for maintenance: ongoing until 31 December 2026.

Protection works: Monday 16 March to 30 June 2026, Monday to Friday 8am to 6pm Saturday 8am to 1pm. **Trial hole works:** Wednesday 6 to Friday 15 May 2026, Monday to Friday 8am to 6pm Saturday 8am to 1pm.

What we are doing

We will be carrying out asset and utility protection measures at and outside Kildun Court prior to the building of the Old Oak Common tunnel. We will also require ongoing access to the building.

What to expect

You may notice workers in and outside Kildun Court, and low-level noise from handheld machinery. You may also see security staff regularly checking the building. Residents will need to use the pedestrian access on the right hand side due to utility diversion works.

We are committed to keeping you informed about work on HS2. This includes ensuring you know what to expect and when to expect it, as well as how we can help you. Should you have any questions or concerns about our works you can contact us by:



Freephone **08081 434 434**



Minicom **08081 456 472**



Email **HS2enquiries@hs2.org.uk**



Writing to **FREEPOST
HS2 Community Engagement**



Website **www.hs2.org.uk**

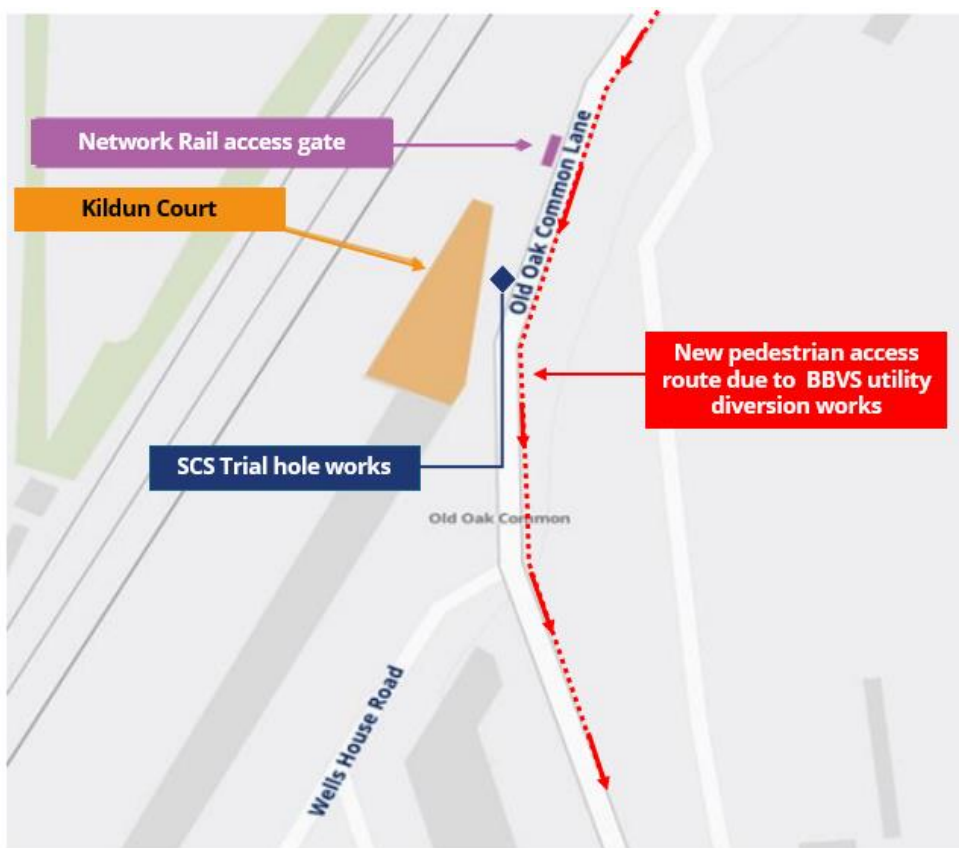
Keep up to date with what is happening in your local area at **www.hs2.org.uk/in-your-area/in-your-area-map/**

Additional information

We are installing supports inside the building and protecting windows and the roof. There will be a traffic marshal to support deliveries to Kildun Court. From Wednesday 6 to Friday 15 May SCS will also be carrying out trial hole works to protect utility services in advance of the tunnelling underneath Kildun Court, connecting the Old Oak Common tunnel to the Old Oak Common station site. This work will be carried out during weekdays only. Monitoring and maintenance works will be carried out in Kildun Court ongoing until December 2026. Residents will need to continue to use right hand side of the pedestrian access on Old Oak Common Lane due to BBVS utility diversion works at this location, this is expected to continue to autumn 2026. For more information about this work please check www.hs2.org.uk/map

Where we will be working

Please see the map below showing the location of our works.



Please contact us if you'd like a free copy of this document in large print, Braille, audio or 'easy read' format. You can also contact us for help and information in a different language.

Holding us to account

If you are unhappy for any reason, you can make a complaint by contacting our HS2 Helpdesk team. For more information, visit: www.hs2.org.uk/how-to-complain

We have an independent Residents' and Construction Commissioner who helps settle disputes and monitors the way in which we manage and respond to complaints about construction.

For more information visit: www.hs2.org.uk/independent-commissioner