



# Update on Northolt Tunnel construction in Hillingdon and Ealing

High Speed Two (HS2) is the new high speed railway for Britain.

## Northolt Tunnel Overview

Construction of the 8.4 mile (13.5km) long twin-bore Northolt Tunnel is complete between Old Oak Common and West Ruislip. All four of the TBMs used to build the Northolt Tunnel have now been taken apart and lifted out of the Green Park Way Vent Shaft in Greenford.

We are now building the emergency and maintenance walkways inside the tunnel and creating the connections between the tunnel and the South Ruislip and Mandeville Road ventilation shaft (see maps overleaf).



If you have a question about HS2 or our works, please contact our HS2 Helpdesk team on 08081 434 434 or email [hs2enquiries@hs2.org.uk](mailto:hs2enquiries@hs2.org.uk)

## Duration of works

24 hours, 7 days a week

## What to expect

Concrete breaking underground

Residents nearby may notice some ground-borne noise

You may see operatives along the line of route taking readings from monitoring equipment

## What we will do

Monitor ground movement, noise and vibration levels at all times

The dates for these works may change. We will provide updates at:

[www.hs2.org.uk/brent-and-ealing](http://www.hs2.org.uk/brent-and-ealing)

# Update on Northolt Tunnel construction in Hillingdon and Ealing

[www.hs2.org.uk](http://www.hs2.org.uk)

Notification



## Northolt Tunnel 24/7 working Walkway construction

We're building the walkways inside the twin-bore tunnel. Concrete is placed in a temporary bridge structure that shapes and supports the concrete until it hardens, to construct emergency and maintenance walkways. These walkways will allow passengers to safely evacuate a train and walk to the nearest cross passage where a rescue train should be in an emergency. A narrower walkway built on the other side will be for maintenance access in the tunnel. At the West Ruislip Portal, ready-mixed concrete is delivered by lorries to electric pumps at the tunnel entrance. Concrete is then pumped through a pipe into the concrete mixer truck and taken into the tunnels. We are currently building the walkways inside the tunnel working towards the West Ruislip Portal. We will update you as these works progress.

These works will be ongoing until February 2026.

## South Ruislip Ventilation Shaft

We are working to connect the tunnel to the main shaft and needs to take place 24 hours a day for safety and engineering reasons.

We are working inside the tunnel about 25 metres below ground.

We are removing tunnel lining segments from the upper part of the tunnel and breaking out the concrete between the tunnel and the bottom of the shaft. The broken concrete is then removed through the tunnel. To reduce night-time noise, we are restricting concrete cutting and drilling activities to between 8am and 10pm daily.

We expect to complete these works on 25 September 2025. We will update you if this changes.



Contact our HS2 Helpdesk team on **08081 434 434**

# Update on Northolt Tunnel construction in Hillingdon and Ealing

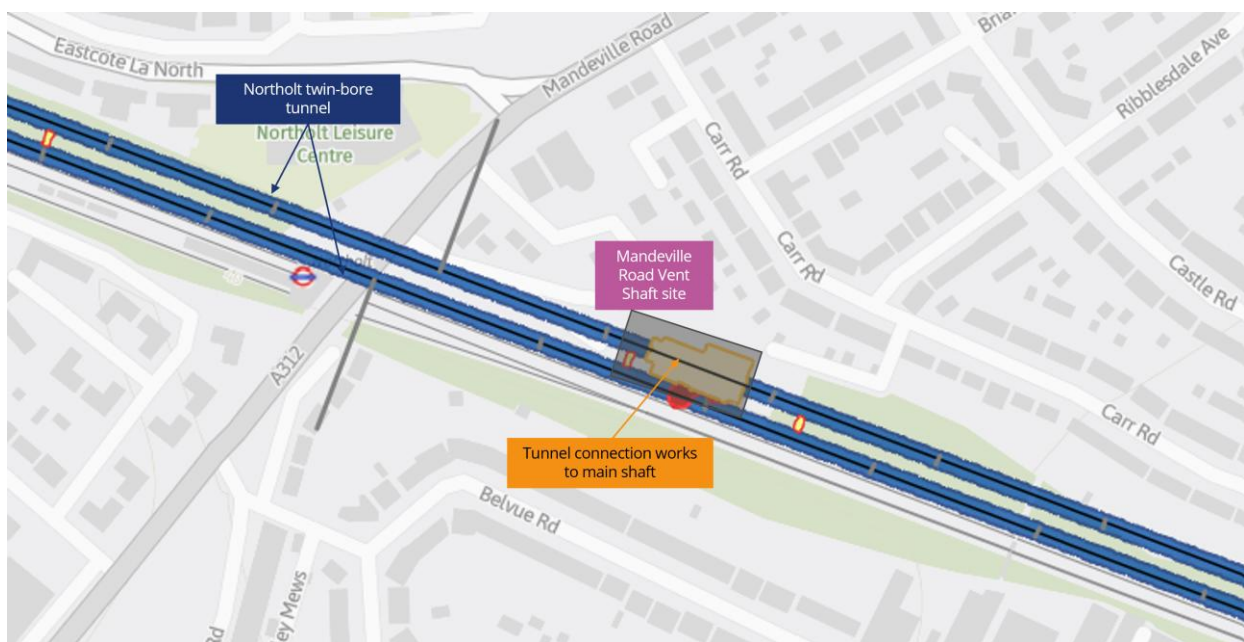
[www.hs2.org.uk](http://www.hs2.org.uk)

Notification



## Mandeville Road Ventilation Shaft

When we have completed the South Ruislip Ventilation Shaft connection works, we will start works to connect the tunnel to the main shaft at the Mandeville Road site. We expect these works to start on 2 October until 31 October. We will update you should these dates change.



Contact our HS2 Helpdesk team on **08081 434 434**

# Keeping you informed

We are committed to keeping you informed about work on HS2. This includes ensuring you know what to expect and when to expect it, as well as how we can help you.

## The Residents' Commissioner

The independent Residents' Commissioner oversees and monitors our commitments to you.

The commissioner's reports and our responses can be found at [www.gov.uk/government/collections/hs2-ltd-residents-commissioner](http://www.gov.uk/government/collections/hs2-ltd-residents-commissioner)

The Residents' Commissioner makes sure we fulfil the commitments in the HS2 Community Engagement Strategy (<https://bit.ly/3oOA25j>).

The Residents' Commissioner can be contacted on: [residentscommissioner@hs2.org.uk](mailto:residentscommissioner@hs2.org.uk)

## Construction Commissioner

The independent Construction Commissioner regularly meets our Chief Executive Officer to raise any concerns or emerging trends across HS2.

The Construction Commissioner's role has been developed to monitor the way we manage and respond to construction complaints.

The commissioner mediates on disputes about construction, involving individuals and organisations, that we can't resolve. The commissioner advises members of the public about how to make a complaint about construction.

The Construction Commissioner can be contacted on: [complaints@hs2-cc.org.uk](mailto:complaints@hs2-cc.org.uk)

## Property and compensation

You can find out about HS2 and properties along the route by visiting:

[www.gov.uk/government/collections/hs2-property](http://www.gov.uk/government/collections/hs2-property)

Find out if you can claim compensation at:

[www.gov.uk/claim-compensation-if-affected-by-hs2](http://www.gov.uk/claim-compensation-if-affected-by-hs2)

## Holding us to account

If you are unhappy for any reason you can make a complaint by contacting the HS2 Helpdesk. For more details on our complaints process, please visit: [www.hs2.org.uk/in-your-area/contact-us/how-to-complain/](http://www.hs2.org.uk/in-your-area/contact-us/how-to-complain/)

**Reference number: HS2-SCS-25-1287**

High Speed Two (HS2) Limited, registered in England and Wales.

Registered office: Two Snowhill, Snow Hill Queensway, Birmingham B4 6GA.

Company registration number: 06791686. VAT registration number: 888 8512 56

## Contact us

Contact our HS2 Helpdesk team all day, every day of the year on:

 Freephone **08081 434 434**

 Minicom **08081 456 472**

 Email **HS2enquiries@hs2.org.uk**

Write to:

**FREEPOST**

**HS2 Community Engagement**

Website **[www.hs2.org.uk](http://www.hs2.org.uk)**

To keep up to date with what is happening in your local area, visit: **[www.HS2inyourarea.co.uk](http://www.HS2inyourarea.co.uk)**

**Please contact us if you'd like a free copy of this document in large print, Braille, audio or 'easy read' format. You can also contact us for help and information in a different language.**

HS2 Ltd is committed to protecting personal information. If you wish to know more about how we use your personal information please see our Privacy Notice: <https://www.gov.uk/government/publications/high-speed-two-ltd-privacy-notice>