

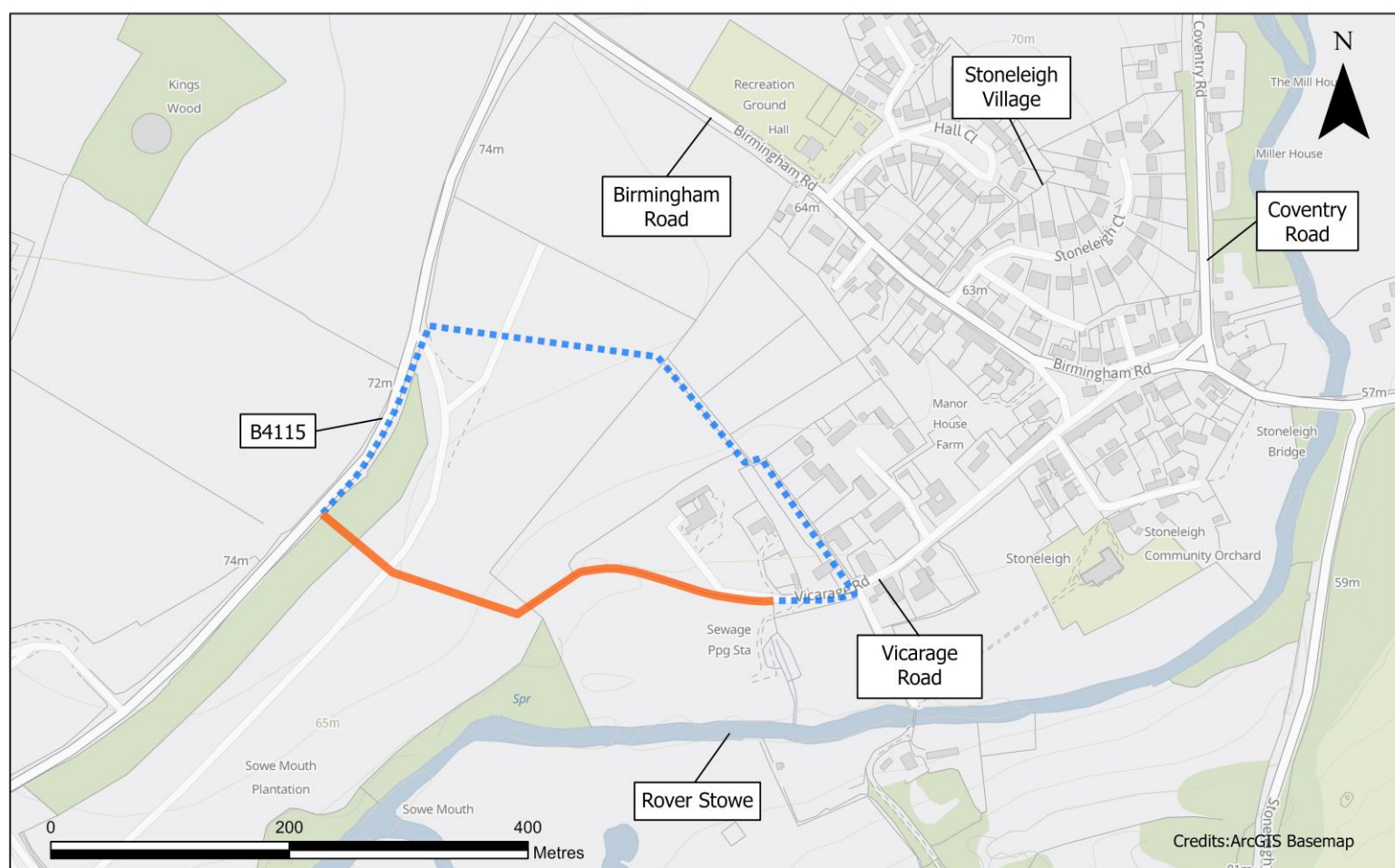
Change of date for Public Right of Way (PRoW) W158 closure and diversion

High Speed Two (HS2) is the new high speed railway for Britain

Balfour Beatty VINCI (BBV) is working in partnership with HS2 Ltd to build the new railway.

To ensure the safety of the public, while we progress the construction of the railway and the realignment of Ashow Road, we will temporarily close footpath **W158** and divert users to **PRoW W157** (please see map below).

We recently communicated that these works would take place from Monday 18 August to Sunday 14 September 2025. These dates have changed and we will now install the temporary closure of the PRoW from **Monday 8 September 2025 to Monday 6 October 2025**.



— PROW Closure
--- Diversion

Date: 17/04/2025
Scale: 1:4,000
PRoW W158 closure with diversion route INC000004916594_CS_BO

The timeframes in this notification may be subject to change. For the latest information, please refer to www.hs2inwarwickshire.co.uk

If you have a question about HS2 or our works, please contact our HS2 Helpdesk team on **08081 434 434** or email hs2enquiries@hs2.org.uk

Reference number: HS2-MW-BBV-Ph1-Ar-No-N2-Prog-works-12-28/04/2025

