

Contact our HS2 Helpdesk team on **08081 434 434**

# HS2 Update

North Warwickshire | Summer 2025

High Speed Two (HS2) is the new high-speed railway for Britain. This update will provide key information and news on HS2 works in North Warwickshire from Curdworth to Coleshill.

## HS2 reset news

Mark Wild was appointed as CEO of HS2 in December 2024. Mark is a rail infrastructure expert, who was brought in to put Crossrail on a successful path to opening in 2022.

He is now reviewing HS2's costs and schedule as part of a 12-month reset of the programme. He carried out a similar process as chief executive of Crossrail, helping to put the project back on track and deliver a successful opening of the Elizabeth line in 2022.

## Reset timings

The reset is comprised of a series of stages and will be completed in 2026.

HS2 Ltd is not standing still during the reset. This year, we are implementing a rigorous plan to focus on driving productivity and efficiency.

## The Spending Review

The multi-year financial settlement as set out in the Government's Spending Review – announced in June, provides greater certainty to the delivery of HS2 and lays the foundations for the reset.

The Spending Review document confirms HS2 Ltd.'s settlement as £25.3bn to progress the delivery of HS2 from Birmingham Curzon Street to London Euston. This multi-year financial settlement gives greater certainty to the delivery of HS2 and provides the foundations for the comprehensive reset of the project.

## Future updates

We shall continue to provide you with updates on the reset and what this means in terms of our plans in this area.



HS2 CEO; Sir Mark Wild OBE



## Church Lane

We are currently constructing Church Lane Overbridge in Middleton which will allow the new railway to pass underneath the lane.

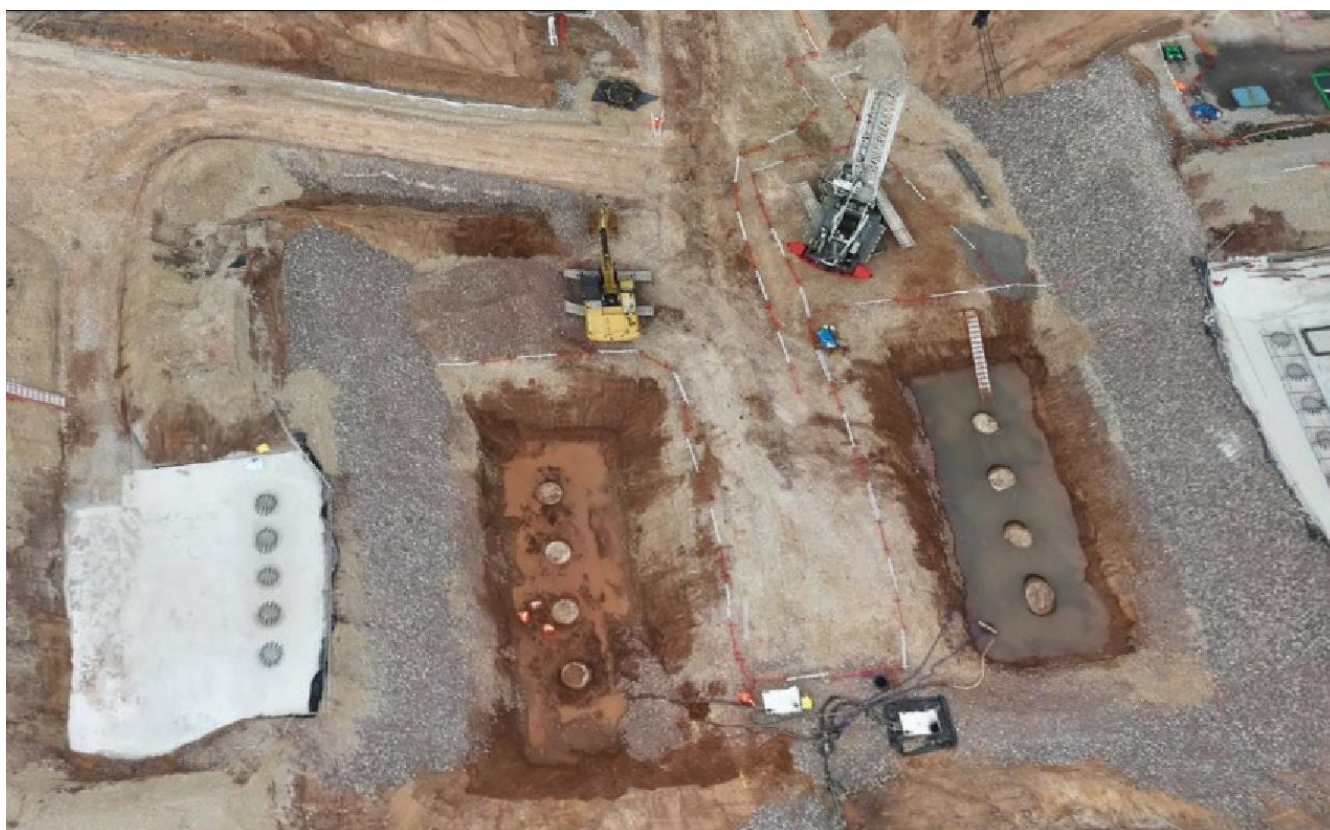
As part of our ongoing works, we will be installing a bridge deck as we prepare to complete the structure.

To deliver the required large bridge deck beams to the site in Middleton, and ensure we minimise impact on the local community, we will use our haul road rather than local roads.

This will require temporary overnight closures of Drayton Lane.

Additionally, this will include removing road signage and street furniture on Drayton Lane and A453 Sutton to get the bridge deck beams on to our haul road and into Middleton.

For more information on traffic management, please see our Warwickshire Construction look ahead document by clicking [here](#) or scanning the QR code.



Church Lane works

## Celebrating success: Considerate Constructor Scheme

The CCS National Awards are one way in which the Considerate Constructors Scheme supports and drives positive change in the construction industry.

Every year, BBV undertake a number of Considerate Constructors Scheme audits. At the end of 2024 we had two very successful site audits. The site audit at Kingsbury Road, scored 45/45, and our Cappers Lane site also scored full marks leading to a 'Gold' award.

The National Site Awards recognise the efforts that constructors have made to be the most considerate neighbours. They recognise those that are creating value in the communities surrounding them, and those that are respectful of the public, the workforce, and the environment.

Each year, the winners are presented with either Bronze, Silver or Gold awards depending on their performance against the Code of Considerate Practice, within similar project value bandings to ensure fairness.



## Community Investment: British Heart Foundation

HS2's Community Investment programme supports community-led projects which are selected and delivered to assist those stakeholders and communities most impacted by our works.

To mark Heart Awareness Month in February, colleagues were offered an online CPR training course to empower them with lifesaving knowledge.

Additionally, a clothing donation drive across Staffordshire and the West Midlands saw colleagues generously donating over 40 bags of clothing with an estimated total of £2,000.

During June, a group of HS2 employees took part in a volunteer day at the head office for the British Heart Foundation at Birmingham Business Park where they spent the day helping the fulfilment team.

***"We are so thankful to all the volunteers who refurbished hundreds of collection tins and boxes which has been an INCREDIBLE help to us. It means we're saving money on buying new materials for our supporters and our sustainability is boosted by reusing and recycling! This means more energy and funds can go toward our funded research and support to save lives and keep families together for longer."*** - Zoe, Fundraising Manager at the British Heart Foundation



Collection bins around BBV sites



## B4114: realignment and reopening

We are undertaking works around the B4114 Birmingham Road to construct the Coleshill Viaducts that will carry the HS2 railway across the B4114 Birmingham Road, northwards and southwards.

The construction of the Coleshill Viaducts will include piling platforms, piling, and pile cap works, along with construction of the viaduct piers and decks.

The B4114 Birmingham Road successfully re-opened on its original alignment at the end of May. This milestone follows a 15-month closure that allowed us to lower a new section of the road offline in order to pass safely under the new viaducts. Careful planning and execution meant this was achieved without causing disruption to road users. The existing road diversion that had been in place since February 2024 has also been removed.



Planned diversion route

A final phase of works to install the viaduct segments, will require a further 28-day road closure on the B4114 Birmingham Road in Coleshill. The closure is scheduled to take place in January 2026.

To stay updated on road closures and to help plan your journeys effectively, please subscribe to HS2 in Warwickshire by clicking [here](#) or visiting [bit.ly/3TuQxSx](https://bit.ly/3TuQxSx)

## Attleboro Lane Overbridge

We recently completed works around Attleboro Lane to tie-in the re-aligned road onto the Attleboro Lane Overbridge. The Attleboro Lane Overbridge will carry traffic over the HS2 railway serving properties at the south end of Attleboro Lane. It also connects the existing public right of way routes for pedestrians and cyclists into Castle Bromwich.



Works on the Attleboro Lane Overbridge

## Spotlight: How we're managing traffic

As part of the new railway construction, the route will cross motorways, canals, rivers, and roads. This means implementing traffic management measures to ensure the railway can be safely built.

### Managing roads during construction

To reduce disruption, we often realign roads. This involves building a new road next to the existing one, temporarily diverting traffic onto the new road, and then constructing an overbridge on the original alignment. Once the structure is complete, we move traffic back to the original road.

### What is traffic management?

Traffic management ensures a safe working environment when construction occurs near roads. This may include:

- Temporary Traffic Lights: Installed to manage traffic flow safely
- Road Closures: Only used when absolutely necessary, especially if the road isn't wide enough for safe working conditions. We aim to schedule these overnight to reduce impact, but this isn't always possible in densely populated areas due to lighting concerns for nearby residents

### How we're reducing disruption

We've listened to community feedback and introduced several measures to minimise the impact:

- Scheduling work during evenings where feasible
- Installing traffic management between 9:30 am and 3:30 pm to avoid rush hour
- Using haul roads instead of public roads when possible
- Increasing workforce to complete work faster
- Manually controlling traffic lights during peak hours for better flow
- Preferring temporary traffic lights over full road closures where possible
- Building temporary road alignments to keep traffic moving smoothly

### Approval and communication

Before any traffic management measures are put in place:

We seek approval from the relevant authority—National Highways for motorways and A roads, and County Councils for other roads.

We provide details of diversion routes and signage for approval.

Once approved, this information is shared with sat nav systems and emergency services to update their maps.

Changes to the agreed plan require additional consent from the relevant authority.

## Giving back to the community in North Warwickshire

We offer two funds to support our communities. These are the Community and Environment Fund (CEF) and the Business and Local Economy Fund (BLEF).

The CEF is designed to give communities the opportunity to share in the benefits of HS2. It is an allocated fund that communities are able to apply for, to help to support local projects that aim to improve their local area. The BLEF is designed to support local economies that may be disrupted by the construction of HS2. BLEF grants are for local business support organisations and local authorities to help maintain business activity in local communities.

The most recently announced award was in May 2025 to 4th Castle Bromwich Guides a voluntary/community group in Castle Bromwich, West Midlands. We have awarded them £4,450. The project is to provide equipment to support activities and camping expeditions. This will support improved access to the outdoors, improved fitness opportunities and the development of teamwork, leadership and skills that will benefit girls in their education and later employment. The guides will take part in a number of visits and camping expeditions using the new equipment.

For more information about each of these funds, including how to apply, please visit:

[hs2funds.org.uk/](https://hs2funds.org.uk/)

### Community Engagement: Water Orton Carnival

On 20 June, 25 enthusiastic volunteers from BBV and HS2 supported with the setup of Water Orton Carnival for a third consecutive year.

The day involved loading and unloading the flat bed vans with the Carnival materials. Setting up several marquees and the showground. BBV also supplied the traffic management for the event. This was a great opportunity for BBV and HS2 to show their support to the local community who are affected by our works.

Excellent teamwork was demonstrated throughout, and an enjoyable day was had by all. The weather was on our side too. Lauren Torpey who co-ordinated the volunteer support attended the event on the Saturday and confirmed it was a great success.

The Carnival committee were thrilled with the support and have already booked us in for support next year! We are glad our volunteer support is appreciated.

***“We can’t thank you enough for all the work the team have done in setting up. There are so many of you and it has been done in record time. I can’t stop smiling”- Becky Black – Carnival Committee***



## Engaging with local communities

We know that planning and building the railway disrupts the lives of local people. We will always try to do the right thing and reduce disruption as much as we can.

Our specialists work across each section of the route and will keep you informed about work taking place. They will also respond to any question you may have.

Drop-in sessions are held regularly and provide important updates on the project. We encourage attendees to share feedback so we can understand the views of our communities.

We work closely with community groups and local authorities to find ways to mitigate any potential disruption caused by the construction of HS2.

Our teams also support community and school projects to benefit the areas where we work. These include giving back to communities by volunteering, fundraising, or providing materials, labour or investment. Our helpdesk is open 24/7 – ring us on 08081 434 434 if you would like to discuss an idea with our team.



### Keep up to date on HS2 activity in your area

To receive notifications of our upcoming activity, sign up for email notifications:

**[www.engagement.hs2.org.uk/join-mailing-list/](http://www.engagement.hs2.org.uk/join-mailing-list/)**

To view more detail on what work is happening near you, visit our interactive map:

**[www.hs2.org.uk/in-your-area/map](http://www.hs2.org.uk/in-your-area/map)**

Find out what engagement events are coming up in your area at:

**[www.hs2.org.uk/events](http://www.hs2.org.uk/events)**

## Stay informed about the progress of HS2

We are committed to keeping you informed about the planning and progress of HS2.

Please complete the form below to join our mailing list and receive emails about the aspects of the project that you are most interested in.

If you would also like to receive information about current or planned HS2 construction works in our area, please complete our **[local mailing list form](#)** or you scan the QR code.



**Follow us on social channels**





# Keeping you informed

We are committed to keeping you informed about work on HS2. This includes making sure you know what to expect and when to expect it, as well as how we can help.

## Residents' and Construction Commissioner

The independent Residents' and Construction Commissioner oversees and monitors our **community engagement strategy**, making sure we fulfil our commitments to you.

The commissioner monitors the way we manage and respond to complaints about construction and advises members of the public how to make complaints.

The commissioner helps settle disputes involving individuals and organisations that we can't resolve.

You can find the commissioner's report and our responses at:  
[www.gov.uk/government/collections/independent-hs2-commissioner](http://www.gov.uk/government/collections/independent-hs2-commissioner)

The commissioner can be contacted on:  
[hs2commissioner@dft.gov.uk](mailto:hs2commissioner@dft.gov.uk)

## Property and compensation

You can find out all about HS2 and properties along the route by visiting:  
[www.gov.uk/government/collections/hs2-property](http://www.gov.uk/government/collections/hs2-property)

Find out if you're eligible for compensation at:  
[www.gov.uk/claim-compensation-if-affected-by-hs2](http://www.gov.uk/claim-compensation-if-affected-by-hs2)

## Holding us to account

If you are unhappy for any reason, you can make a complaint by contacting our HS2 Helpdesk team.

For more details on our complaints process, please visit our website:  
[www.hs2.org.uk/contact-us/how-to-complain](http://www.hs2.org.uk/contact-us/how-to-complain)

**Reference number: HS2-MW-BBV-Ph1-Ar-No-N2-CR-32-27/06/2025**

High Speed Two (HS2) Limited, registered in England and Wales.  
Registered office: Two Snowhill, Snow Hill Queensway, Birmingham B4 6GA.  
Company registration number: 06791686. VAT registration number: 888 8512 56

## Contact us

Our HS2 Helpdesk team are available all day, every day. You can contact them by:

 Freephone **08081 434 434**

 Minicom **08081 456 472**

 Email [hs2enquiries@hs2.org.uk](mailto:hs2enquiries@hs2.org.uk)

Write to:

**FREEPOST**  
**HS2 Community Engagement**

Website [www.hs2.org.uk](http://www.hs2.org.uk)

To keep up to date with what is happening in your area, visit:

[www.hs2inyourarea.co.uk](http://www.hs2inyourarea.co.uk)

**Please contact us if you'd like a free copy of this document in large print, Braille, audio or easy read. You can also contact us for help and information in a different language.**

We are committed to protecting personal information. If you would like to know more about how we use your personal information, please see our privacy notice ([www.gov.uk/government/publications/high-speed-two-ltd-privacy-notice](http://www.gov.uk/government/publications/high-speed-two-ltd-privacy-notice))