

SKANSKA



STRABAG

Working in
partnership with

HS2

Update: Boundary wall and drainage works at South Ruislip Vent Shaft

HS2-SCS-25-1273

Location

South Ruislip Vent Shaft site, Victoria Road, South Ruislip

Duration

Ongoing until June 2027

Core hours: Monday to Friday, 8am to 6pm
Saturdays, 8am to 1pm

Overnight work 11 May to 31 July 2026
Weeknights except Thursdays, 10pm to 5am
Saturdays and Sundays, 10pm to 6:30am

What we are doing

Continuing works to build the boundary walls.

What to expect

Some noise and vibration. We will use noise reducing barriers where possible.

We apologise for any disturbance this work may cause

We are committed to keeping you informed about work on HS2. This includes ensuring you know what to expect and when to expect it, as well as how we can help you. Should you have any questions or concerns about our works you can contact us by:



Freephone **08081 434 434**



Minicom **08081 456 472**



Email **HS2enquiries@hs2.org.uk**



Writing to **FREEPOST
HS2 Community Engagement**



Website **www.hs2.org.uk**

Keep up to date with what is happening in your local area at
**www.hs2.org.uk/in-your-area/
in-your-area-map/**

Additional information

We are building the boundary walls of the South Ruislip Vent Shaft. We are continuing to build concrete boundary walls and are installing security fences on them.

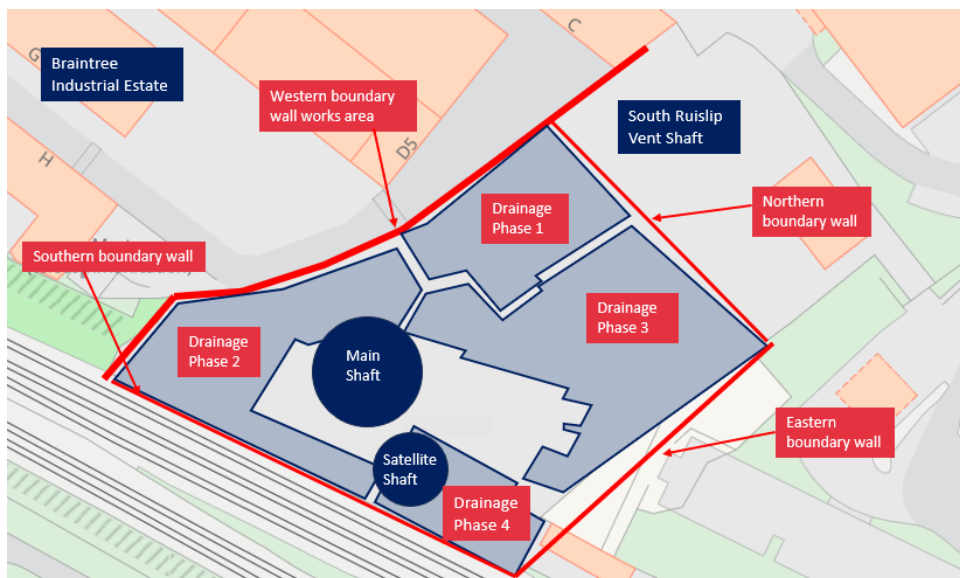
Due to a delay in delivery of materials, work on the western boundary wall will not be completed until July 2026. We will then work on the eastern and northern boundary walls until June 2027.

Work on the southern boundary wall will restart on **11 May until 31 July 2026**. For safety reasons, we need to complete some of the work overnight when trains are not running. We will work every night except Thursdays. We will remove fencing and temporary foundations and then install pre-cast walls using an excavator and handheld tools.

Drainage works on site are ongoing until June 2026. These works include ground excavation and installation of pipes and manholes.

Where we will be working

The map below shows the locations of the boundary walls and drainage works.



Drainage phase 1:
Completed

Drainage phase 2:
February to June 2026

Drainage phase 3:
Paused

Drainage phase 4:
March to May 2026

Please contact us if you'd like a free copy of this document in large print, Braille, audio or 'easy read' format. You can also contact us for help and information in a different language.

Holding us to account

If you are unhappy for any reason, you can make a complaint by contacting our HS2 Helpdesk team. For more information, visit: www.hs2.org.uk/how-to-complain

We have an independent Residents' and Construction Commissioner who helps settle disputes and monitors the way in which we manage and respond to complaints about construction.

For more information visit: www.hs2.org.uk/independent-commissioner