



## Notice of Small Dean Lane and temporary bridleway closure extension

August 2025 | [www.hs2.org.uk](http://www.hs2.org.uk)

High Speed Two (HS2) is the new high speed railway for Britain, if you have any questions or enquiries about our work, please contact our Helpdesk to find out more. You can sign up for regular updates in your local area at [www.hs2inyourarea.co.uk](http://www.hs2inyourarea.co.uk).

### What are we doing?

This notice is to inform of the closure extension to Small Dean Lane and the temporary bridleway diversion.

We are now entering a phase of construction in the Small Dean area which involves large-scale earthworks, embankment construction, and the movement of heavy machinery.

Small Dean Lane and the temporary bridleway will remain closed due to the ongoing construction activity in the area. The surrounding area and limited space prevent the creation of a route that meets the necessary safety and accessibility standards. The bridleway will reopen once it is safe to do so, and the permanent route is ready for use.

The map on the following page shows the details of the closure and identifies the alternative footpath and bridleway route that provide access from the Wendover area using Bacombe Lane to access countryside to the west of HS2 works.

### When will these works take place?

**Closure extension from September 2025 until March 2026.**

These dates may be subject to change due to circumstances outside of our control but will be completed on or around the timings specified.

**If you have a question about HS2 or our works, please contact our HS2 Helpdesk team on 08081 434 434 or email [hs2enquiries@hs2.org.uk](mailto:hs2enquiries@hs2.org.uk)**

### Duration of works

Closure extension from September 2025 until March 2026

### What to expect

A closure of Small Dean Lane and the temporary bridleway diversion

Use of the alternative footpath and bridleway

### What we will do

Respond promptly to any complaints we may receive and action accordingly.

Manage any noise or traffic impacts.

# Notice of Small Dean Lane and temporary brideway closure extension

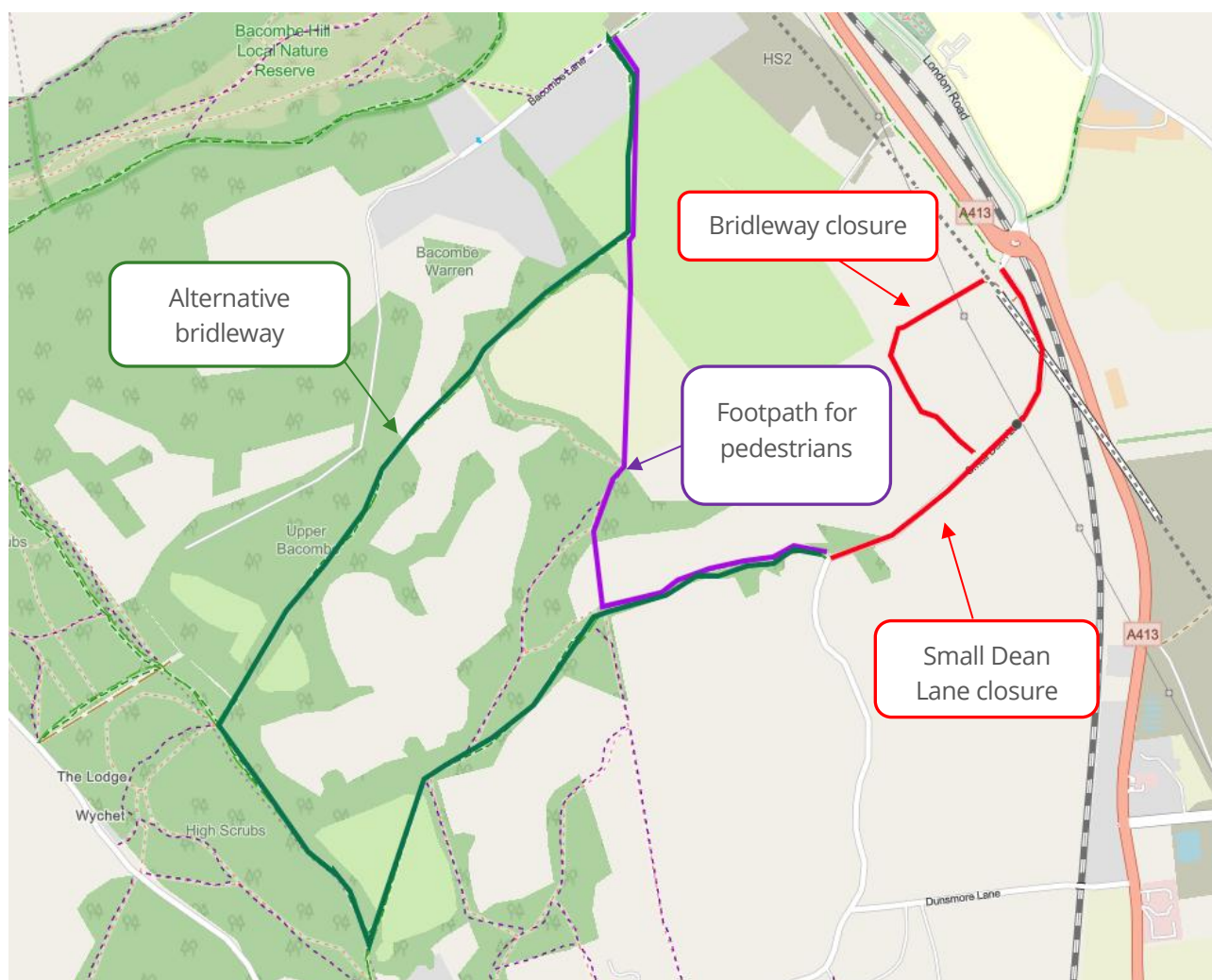
[www.hs2.org.uk](http://www.hs2.org.uk)



## Where will the works be?

The map below shows closures of Small Dean Lane and the temporary brideway (routes highlighted in red).

The purple and green highlighted routes are existing Public Rights of Ways that can be used to reach Wendover via Bacombe Lane. The purple route is for pedestrian usage and the green route (bridleway) is for non-motorised users (i.e. horses, bikes).



Contact our HS2 Helpdesk team on **08081 434 434**

# Keeping you informed

We are committed to keeping you informed about work on HS2. This includes ensuring you know what to expect and when to expect it, as well as how we can help.



## Residents' Charter and Commissioner

The Residents' Charter is our promise to communicate as clearly as we possibly can with people who live along or near the HS2 route.

[www.gov.uk/government/publications/hs2-residents-charter](http://www.gov.uk/government/publications/hs2-residents-charter)

We also have an independent Residents' Commissioner whose job is to make sure we keep to the promises we make in the Charter and to keep it under constant review. Find reports at: [www.gov.uk/government/collections/hs2-ltd-residents-commissioner](http://www.gov.uk/government/collections/hs2-ltd-residents-commissioner)

You can contact the Commissioner at: [residentscommissioner@hs2.org.uk](mailto:residentscommissioner@hs2.org.uk)

## Construction Commissioner

The Construction Commissioner's role is to mediate and monitor the way in which HS2 Ltd manages and responds to construction complaints. You can contact the Construction Commissioner by emailing:

[complaints@hs2-cc.org.uk](mailto:complaints@hs2-cc.org.uk)

## Property and compensation

You can find out all about HS2 and properties along the line of route by visiting:

[www.gov.uk/government/collections/hs2-property](http://www.gov.uk/government/collections/hs2-property)

Find out if you're eligible for compensation at:

[www.gov.uk/claim-compensation-if-affected-by-hs2](http://www.gov.uk/claim-compensation-if-affected-by-hs2)

## Holding us to account

If you are unhappy for any reason you can make a complaint by contacting our HS2 Helpdesk team.

For more details on our complaints process, please visit our website:

[www.hs2.org.uk/how-to-complain](http://www.hs2.org.uk/how-to-complain)

## Contact Us

Contact our HS2 Helpdesk team all day, every day of the year on:

 Freephone **08081 434 434**

 Minicom **08081 456 472**

@ Email **[hs2enquiries@hs2.org.uk](mailto:hs2enquiries@hs2.org.uk)**

Write to:

**FREEPOST**

**HS2 Community Engagement**

Website **[www.hs2.org.uk](http://www.hs2.org.uk)**

To keep up to date with what is happening in your local area, visit: **[www.hs2inyourarea.co.uk](http://www.hs2inyourarea.co.uk)**

**Please contact us if you'd like a free copy of this document in large print, Braille, audio or easy read. You can also contact us for help and information in a different language.**

HS2 Ltd is committed to protecting personal information. If you wish to know more about how we use your personal information please see our Privacy Notice <https://www.gov.uk/government/publications/high-speed-two-ltd-privacy-notice>

**Reference number:** HS2-EKFB-25-1253

High Speed Two (HS2) Limited, registered in England and Wales.

Registered office: Two Snowhill, Snow Hill Queensway, Birmingham B4 6GA.

Company registration number: 06791686. VAT registration number: 888 8512 56.

Contact our HS2 Helpdesk team on **08081 434 434**