

Contact our HS2 Helpdesk team on **08081 434 434**

# HS2 Update

Twyford to Greatworth | June 2025

High Speed Two (HS2) is the new high speed railway for Britain. You can sign up for regular updates in your local area at [www.hs2inyourarea.co.uk](http://www.hs2inyourarea.co.uk)

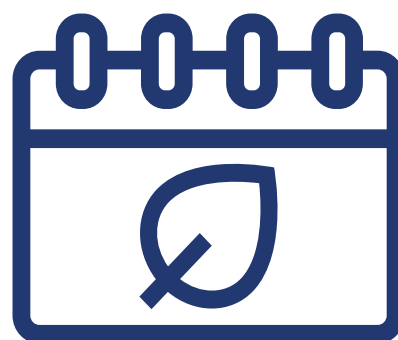
## Inside our summer newsletter

Our newsletters are a valuable tool used to update local communities on the progress of the HS2 project. This newsletter has been created specifically for the Twyford to Greatworth (T2G) construction area, located between Twyford in North Buckinghamshire and Greatworth in Northamptonshire.

It includes the latest information on upcoming construction activities and expected timelines while also highlighting our efforts to support local communities.

In this edition of our newsletter, we will be covering the milestones we have achieved, and the upcoming works for the next few months. This will include updates on:

- A43 overbridge
- A421 overbridge
- Godington viaduct
- Turweston viaduct
- A422 overbridge
- Chetwode
- A421 & A4421 traffic lights
- Working hours



## Drop-in events

**Date:** 12 June 2025

**Time:** 10:30 to 12:30

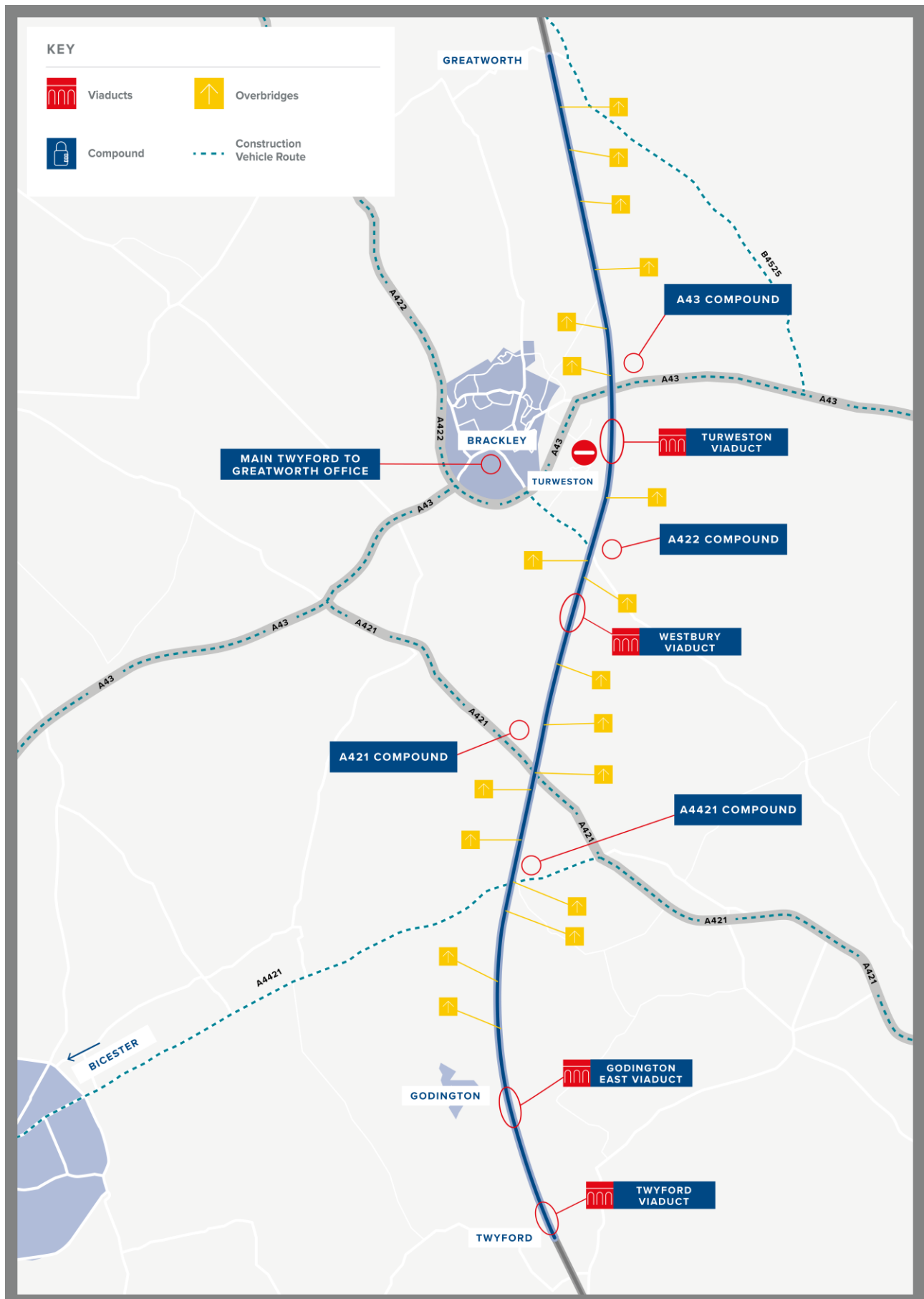
**Place:** Syresham Village Hall

**Date:** 19 June 2025

**Time:** 15:30 to 18:00

**Place:** Newton Purcell Village Hall

Please come along to discuss our works. We will be happy to answer any queries.



# Construction Update

## A43 overbridge

In April the steel beams were lifted into position at the A43 overbridge. Preparation for the work began in 2023 when HS2 engineers, working closely with National Highways, realigned the road to create an 'island' between the two carriageways big enough for the construction of the new bridge deck.

Engineers are using a 'top-down' approach. They first installed 52m deep piled foundations before constructing the pile caps and piers that will support the 66-metre-long bridge deck carrying the road. The beam lifts marked a significant milestone, and a 750-tonne crane was used to lift the beams.

With the beams now in position, the team will focus on the concrete deck and parapets. Once the bridge has been built, the road will be moved back onto the new bridge and excavation can begin to create space for the railway to pass underneath.

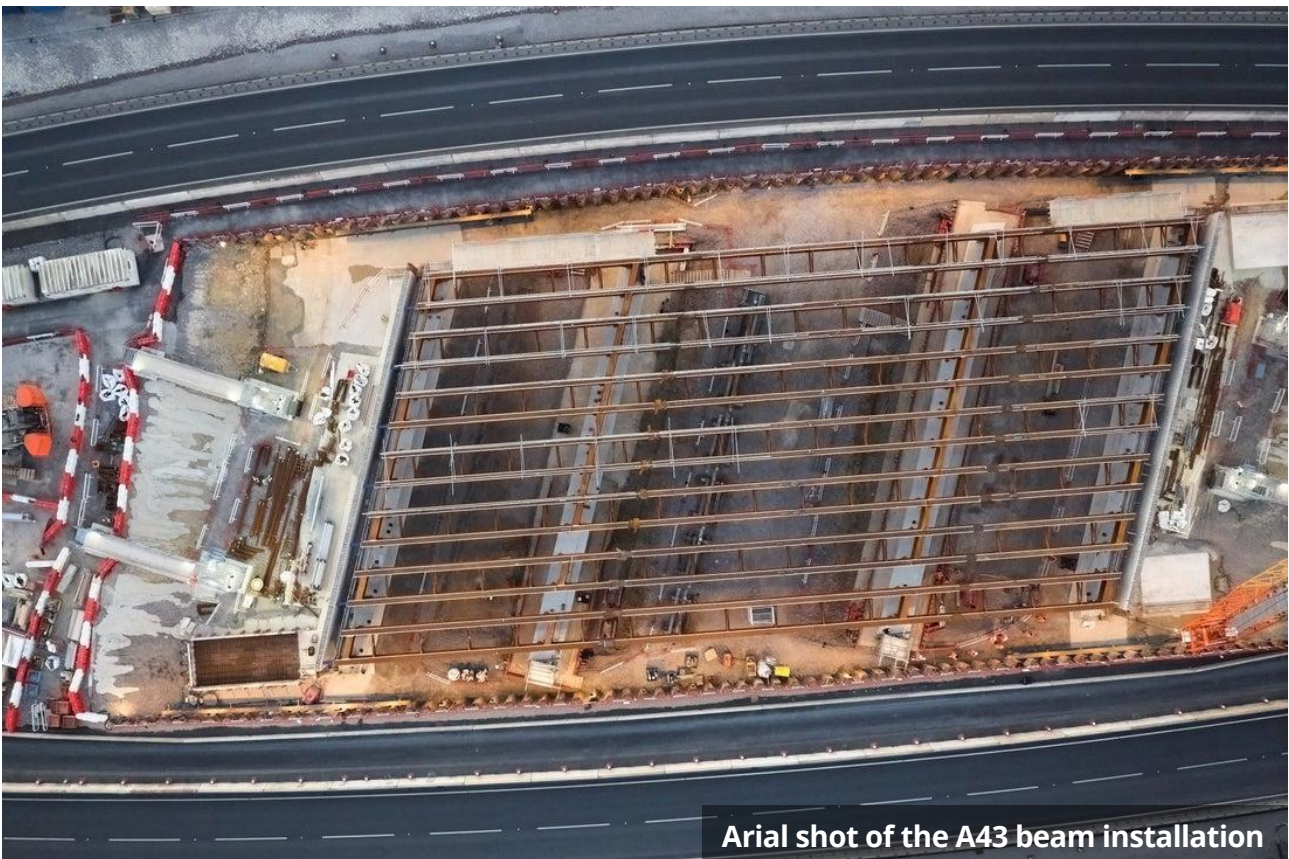


### HS2 Ltd's Senior Project Manager Elizabeth Longinotti said:

"The A43 is a busy route between Brackley and Northampton and I'd like to thank drivers for their patience over the three weekends, allowing us to safely lift the enormous steel beams into position while the road was closed.

"With the beams now in place, we can focus on the next part of this complex multi-stage project – pouring the concrete deck ready for the road to be moved onto the new bridge early next year."







# Construction Update



## A421 overbridge

Highway works for the new road realignment and overbridge are now underway.

Temporary traffic lights have been installed on the A421 and will remain in place over the summer. You can find updates of road closures and traffic management on the HS2 website, we will continue to update communities as work continues.

All the bridge parapets have now been installed. The rest of the year will be spent completing substructure works, piers and retaining walls.

The road diversion will be completed towards the end of the year.

## Godington viaduct

We've made major progress at the Godington east viaduct! All 16 of our hefty concrete beams are now in place. Each one is a whopping 20 metres long and weighs 38 tonnes - that's about the same as six African elephants!

These huge beams made quite a journey before they got here, all the way from Ireland. With the help of a massive 600-tonne crane, we lifted and placed the beams onto a special supporting system, known as a Doka system. This system will keep our beams safe and secure until the next stage of the process is completed.

Our team is now focusing on creating the diaphragm, that will bind the beams together and help distribute weight to the base structure. Once this is done, we'll be pouring concrete for the main deck. The same dedicated team is also working on the Godington west viaduct.



Godington east viaduct post beam lift

# Construction update

## Turweston viaduct

In Turweston significant progress was made in February when an 80m bridge push was completed in approximately three hours. The bridge deck was pushed over the Great River Ouse using a similar method to the previously launched Westbury viaduct.

The 591-tonne steel structure was assembled to one side and slid out on special pads covered in PTFE - a Teflon-like material typically found in non-stick frying pans – to minimise friction between the deck and the temporary steel bearings on top of each of the piers.

Now that the bridge has been successfully launched, two travelling formwork structures will be lifted onto the bridge using a crane crawler. Formwork and reinforcement works will then begin ready for the concrete deck. The traveller will then be lifted off and disassembled on the ground.

Turweston is one of five viaducts that use an innovative ‘double composite’ structure, with layers of reinforced concrete on the top and bottom to create a more structurally efficient box-like cross section which dramatically cuts the amount of embedded carbon in the design.



Turweston viaduct prior to bridge launch



## A422 overbridge

This April we achieved a major milestone at the A422 overbridge. We successfully positioned the central span onto the pier crosshead. Because of the tight space we're working in, we had to get a bit creative with our approach. This was the first time EKFB has used this unique method, and we're thrilled to report it was a success.

We relied on a jacking methodology and a self-propelled modular transporter (or SPMT, for short) to get the job done. This involved four SPMT trailers working together like a well-oiled machine, rotating and lifting the central span up to the piers, 12 meters high. The jack then gently lowered the spans until they rested perfectly on top of the bearings.

Now that the central span is in place, our team is continuing to install the remaining two side spans. This will involve a total of six lifts, three for each side. Once the spans are in place, we'll pour the concrete deck.

We're targeting February 2026 for the new bridge to be open for public use. Once it's ready, the temporary bridge currently serving traffic will be removed.

The finished overbridge will be 130 meters long, resting on 18-meter-high piers. Once it's operational, A422 traffic will cross above while HS2 trains speed along underneath.



## Chetwode

Work continues to install parapets for School End and CHW18 overbridges. Deliveries are ongoing, and temporary access to Manthorne Farm remains in place. The team continue to install the parapets.



We're excited to announce the successful launch of the 'Green Realignment', a new highway redefining connectivity between Preston Bissett Road and Main Street in Chetwode. We appreciate your patience during the construction process on the Green Realignment.

We will continue to keep the community updated with road closures and traffic management in the area.

## A421 & A4421 Traffic Lights

Thank you all for your patience as we progress with the A421 and A4421 works. We're now connecting the new road layout to the freshly constructed overbridges, a phase involving drainage, utility installations, embankment construction, safety barriers, signage, and road safety audits.

For the safety of people working on site and the public using the road, we've had put traffic management measures in place. This is reviewed regularly to keep disruption to a minimum while maintaining high levels of health and safety for all.

After evaluating the current traffic situation, we decided to temporarily remove the lights on the A4421's eastern side, allowing us to focus on the west side.

Please anticipate potential delays during peak times and consider adding extra time to your journey. We appreciate your understanding.

### Working Hours

As we move into the summer months, we will be adjusting our core working hours between Twyford and Greatworth.

Working hours, as consented with local authorities, will be:

Monday to Friday 7am-7pm

Saturday 8am-6pm.

Hours may vary in certain locations for specific tasks like concrete pours or maintenance works.





# Keeping you informed

We are committed to keeping you informed about work on HS2. This includes ensuring you know what to expect and when to expect it, as well as how we can help.

## Residents' Charter and Commissioner

The Residents' Charter is our promise to communicate as clearly as we possibly can with people who live along or near the HS2 route.

[www.gov.uk/government/publications/hs2-residents-charter](http://www.gov.uk/government/publications/hs2-residents-charter)

We also have an independent Residents' Commissioner whose job is to make sure we keep to the promises we make in the Charter and to keep it under constant review. Find reports at:

[www.gov.uk/government/collections/hs2-ltd-residents-commissioner](http://www.gov.uk/government/collections/hs2-ltd-residents-commissioner)

You can contact the Commissioner at:  
[residentscommissioner@hs2.org.uk](mailto:residentscommissioner@hs2.org.uk)

## Construction Commissioner

The Construction Commissioner's role is to mediate and monitor the way in which HS2 Ltd manages and responds to construction complaints. You can contact the Construction Commissioner by emailing:  
[complaints@hs2-cc.org.uk](mailto:complaints@hs2-cc.org.uk)

## Property and compensation

You can find out all about HS2 and properties along the line of route by visiting:

[www.gov.uk/government/collections/hs2-property](http://www.gov.uk/government/collections/hs2-property)

Find out if you're eligible for compensation at:

[www.gov.uk/claim-compensation-if-affected-by-hs2](http://www.gov.uk/claim-compensation-if-affected-by-hs2)

## Holding us to account

If you are unhappy for any reason, you can make a complaint by contacting our HS2 Helpdesk team. For more details on our complaints process, please visit our website:

[www.hs2.org.uk/how-to-complain](http://www.hs2.org.uk/how-to-complain)

## Contact Us

Contact our HS2 Helpdesk team all day, every day of the year on:

 Freephone **08081 434 434**

 Minicom **08081 456 472**

@ Email **[HS2enquiries@hs2.org.uk](mailto:HS2enquiries@hs2.org.uk)**

Write to:

**FREEPOST**

**HS2 Community Engagement**

Website **[www.hs2.org.uk](http://www.hs2.org.uk)**

To keep up to date with what is happening in your local area, visit:  
**[www.HS2inyourarea.co.uk](http://www.HS2inyourarea.co.uk)**

**Please contact us if you'd like a free copy of this document in large print, Braille, audio or easy read. You can also contact us for help and information in a different language.**

HS2 Ltd is committed to protecting personal information. If you wish to know more about how we use your personal information please see our Privacy Notice  
<https://www.gov.uk/government/publications/high-speed-two-ltd-privacy-notice>

**Reference number: HS2-MW-EK-Ph1-Ar-Ce-C2-CR-29-29/04/2025**

High Speed Two (HS2) Limited, registered in England and Wales.

Registered office: Two Snowhill, Snow Hill Queensway, Birmingham B4 6GA.

Company registration number: 06791686. VAT registration number: 888 8512 56