

Contact our HS2 Helpdesk team on **08081 434 434**

HS2 Update

North Chilterns Area | Summer 2025

EKFB
Working in
partnership with **HS2**

High Speed Two (HS2) is the new high speed railway for Britain. Should you have any questions or enquiries regarding our works, please contact the Helpdesk details of which can be found in this newsletter. We will be keeping our local website www.hs2inbucksandbox.co.uk up to date with information on our works in the local area.

What's inside this newsletter

In this edition of the newsletter, we are looking at a review of the last few months and what is coming up:

- What's happening in your area
- Roadworks and closure news
- Key works updates
 - Small Dean viaduct deck slide
 - Start of Wendover green tunnel construction
- Construction updates
 - Rocky Lane
 - Wendover Dean viaduct
 - Grove Farm tunnel boring
 - Bowood Lane overbridge
 - Spring chamber
- Aerial footage
- Low permeability wall installation over Nash Lee Road
- School engagement
- Local area map



Join us at our community events...

- Wednesday 11 June 2025
10am – 12pm
Ellesborough Parish Hall, Ellesborough Road, Aylesbury HP17 0XA
- Thursday 21 July 2025
5pm – 7pm
Great Missenden Memorial Centre
Link Road, Great Missenden HP16 9AE

www.hs2.org.uk/events

What's happening in your area?

Update of continuing works from June – September 2025

Over the next few months you can expect:

- Rocky Lane realignment and underbridge construction
- Traffic management on A413 London Road for Small Dean viaduct deck construction
- Grove Farm underbridge construction
- Wendover green tunnel construction
- Low permeability wall installation over Nash Lee Road and abnormal load deliveries to our Nash Lee Road site
- Nash Lee overbridge construction



First night after Small Dean viaduct launch



EKFB construction team celebrating successful launch of Small Dean viaduct

Roadworks and closure news



Over the next few months we will need to implement temporary traffic management to ensure we can complete all necessary construction activities safely for both road users and our workforce.

Below you can see a summary of what to expect in your area, further information will be communicated via email and the HS2 website (www.hs2.org.uk/route-map) and you can also come and see us at our events.

Location	Works	Traffic management
Rocky Lane (The Lee Parish Council)	Underbridge construction and realignment	Road closure from February 2025 – August 2025
A413, London Road Small Dean (Wendover Parish Council)	Viaduct deck construction (concrete pouring)	Overnight road closures throughout June - July 2025
Nash Lee Road (Ellesborough Parish Council)	Installation of low permeability wall over Nash Lee Road	Road closure from July – August 2025

Key works updates

At the beginning of this year, the deck slide of Small Dean viaduct was completed, and we began construction on the Wendover green tunnel.

Small Dean viaduct deck slide

Over four days between January and February this year, we completed the project's longest and heaviest single-stage viaduct deck slide, weighing 4,500 tons.

This feat was accomplished using PTFE-coated pads, similar to non-stick frying pan surfaces and a precise cable system, to slide the deck at speeds of up to 10 metres per hour. This achievement comes after four years of extensive preparation, including site clearance, utility diversions, road realignments, and construction of the abutments and six supporting piers.

The next two-month phase saw the viaduct deck being lowered by 60cm onto its permanent bearings. This viaduct is one of only two locations in the Chilterns where the HS2 route will remain above ground. Beyond the viaduct, there will also be the realignment of Small Dean Lane and the final realignment of the A413, with landscaping to blend the infrastructure into the environment.



Small Dean viaduct across the A413 during the deck slide

Scan the QR code to watch the timelapse of the viaduct



Start of Wendover green tunnel construction

In the last few months, we started the foundation works to the Wendover green tunnel. The construction involves the creation of a 'cut and cover' tunnel, which will stretch over 1185 metres (0.73 miles).

In December 2024, we closed Bacombe Lane and rerouted it via a temporary link road to Ellesborough Road. The tunnel's south portal will span from Bacombe Lane, with the north portal positioned just beyond where Folly Bridge crosses the Wendover bypass.

Once the tunnel structure is in place, it will be concealed by earthworks and landscaping, returning Ellesborough Road to its existing level. North of the tunnel, the line will run below ground level through the Wendover north cutting, through Nash Lee, until it ascends to cross the A4010 Risborough Road on the Stoke Mandeville Embankment.



First segments being installed at Wendover green tunnel

Construction updates

Rocky Lane

From February 2025, Rocky Lane has been closed to allow for the construction of the Rocky Lane underbridge and to complete a permanent realignment of the road.

So far, the construction of the abutment, deck, and wing walls have been completed. Utility diversions are being undertaken for completion in May and June. We are working closely with utility partners to minimise any impact caused by utilities.

Upon completion of the works, the road will be diverted under the new underbridge, taking the road under the HS2 railway.



Rocky Lane underbridge under construction, wing walls concreted

Wendover Dean viaduct

We have achieved several key milestones at the Wendover Dean viaduct, including the completion of bearing installation and precast plank installation. The bottom deck construction has also advanced, with the first concrete pour successfully completed in April.

Over the next few months, we will be completing construction of the north abutment and the entire bottom deck. Top deck construction is scheduled to start using a form traveller, which will continue over the next 12 months.



Wendover Dean viaduct under construction

Tunnel boring machine (TBM) at Grove Farm culvert

In March 2025, we started tunnel boring works at the Grove Farm culvert site, located just outside of Wendover. The first tunnel boring machine (TBM) has a diameter of 2.44 meters and was lowered 11 metres deep into a shaft. This initiated a two-part underground excavation of 350 metres, which will be followed by a second drive of 450 metres.

This compact TBM will advance at a rate of around 4 metres per day and dig beneath the surface. The tunnelling will provide drainage for the HS2 railway line track bed and mitigate flood risks in the nearby areas either side of the track.



Pre-cast segments at the Grove Farm culvert

Opening of Bowood Lane overbridge

In April 2025, the Bowood Lane overbridge opened for pedestrian use. The previous diversion of the Public Rights of Ways (WEN/37/1, TLE/3) are no longer in operation following the overbridge opening.

Over the next few months, we will be completing construction of the ancillary deck, excavation and earthworks in the area.



Bowood Lane overbridge

Spring chamber

As part of our construction of the Wendover green tunnel and at the Wendover north cutting, we identified an area outside of our working limits.

This involves constructing a spring chamber in farmland northwest of Wendover, which is critical for maintaining groundwater levels and flows, as required by the Environment Agency consent.

The works are anticipated to take around three months, subject to planning application approval from the council. Following two community events and discussions with local community groups, we have received feedback from residents and will continue to reduce the impact of these works in the area.

EKFB aerial footage

One of the best ways to see the progress we are making on site is from our aerial footage. If you scan the QR code below, it will allow you to view the latest of HS2 works in your area.

The footage gives an annotated overview of where different structures will be found once HS2 is complete, along with an update of how the landscaping is currently looking.



Scan me!



Low permeability wall installation over Nash Lee Road



As part of our works at the Wendover north cutting, we have been carrying out construction of a low permeability wall. The wall is being built in sections, each extending deep into the underlying clay to ensure a stable and water-resistant barrier.

The wall is being designed to maintain stability and act as a barrier for groundwater, and to prevent flooding at Wendover north cutting.

We are approaching the next phase of construction, where the wall will be installed over the temporary diversion of Nash Lee Road. This will require a closure of the road for a period of 4 weeks over the summer between July and August 2025.

During this period, we will be completing excavation works, installing slabs and tarmacking the road. The road will be reinstated upon completion of our works.



Hydraulic excavator in operation at Wendover north cutting

FAQ

Q: What is the purpose of the wall and how does it impact the local environment?

A: The wall is designed to control groundwater and potential flooding of local brooks. This ensures both environmental protection and infrastructure integrity in the Wendover north cutting area.

Q: Why do we need to close the road for a month?

A: For safety reasons, the road will be closed for a month. The works will include removing the vehicle restraint system (VRS) and kerbing, excavating for the wall, and installing slabs over the road, followed by tarmacking.

Q: What will the diversion route look like?

A: During the closure, a fully signposted diversion route through Stoke Mandeville will be in operation. An advance works notice with more details will be shared prior to the works.

School engagement

Tunnel boring naming ceremony

A group of year seven students from John Colet School in Wendover were invited to the Grove Farm culvert to reveal the chosen name for the mini tunnel boring machine (TBM) - Hannah.

This honour was dedicated to Hannah Cockroft, a nine-time Paralympic Champion, who expressed her delight upon hearing that the machine was named after her.

This unique opportunity allowed the students to visit Hannah, prior to its launch. They also got the chance to interact with the engineers and understand how TBMs operate underground.

Their artwork was proudly displayed on 'Hannah', and they wrote messages of good will and luck for the team before the commencement of the underground journey.



Pupils from John Colet visiting 'Hannah' at the Grove Farm culvert site

Carbon heroes

Sixth formers from John Colet School and Waddesdon School were involved in the Carbon Heroes (Green Behind the Scenes in Construction) initiative, a programme aimed at encouraging green skills and sustainability within the Construction and Civil Engineering industries.

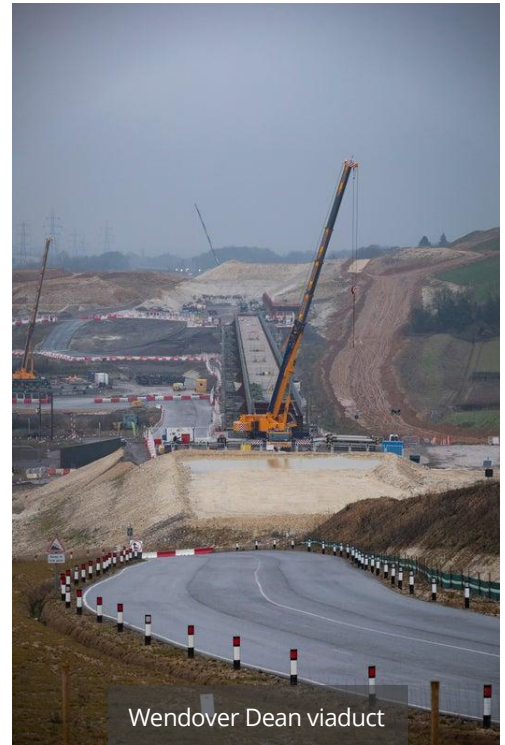
The students attended a Green Careers Conference and were then paired with professional mentors to work on a project related to carbon reduction and sustainability. Over 6 weeks, they conducted research and prepared reports, participating in a "Dragons' Den" pitch and Carbon Heroes exhibition.

The students' work was recognised at an awards ceremony, with awards distributed for best projects and pitches. This unique experience gave the students a taste of the industry setting and helped them develop crucial professional skills.

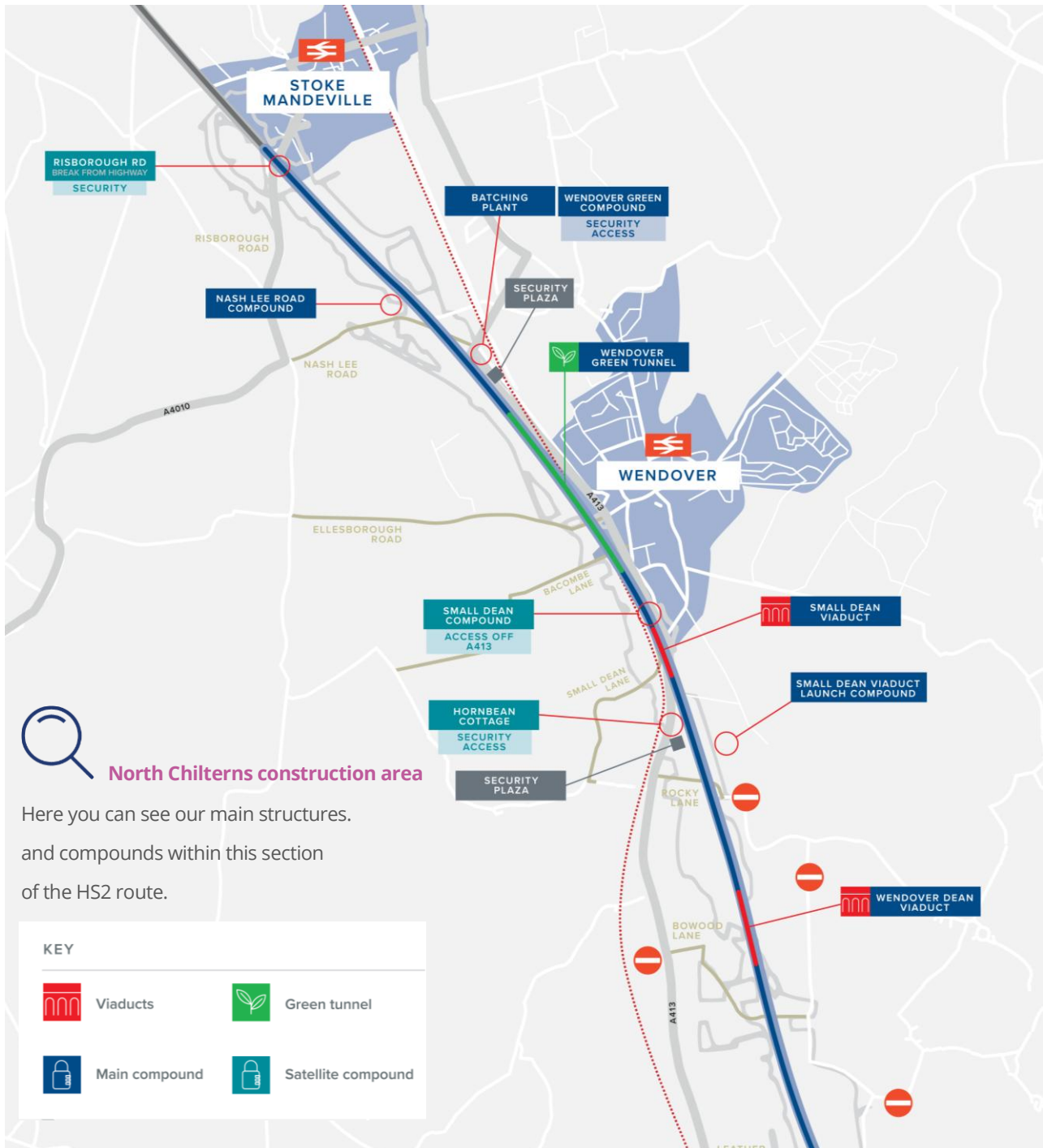


John Colet sixth formers receiving the 'Best Innovation award'

Progress in pictures



North Chilterns Area map



Keeping you informed

We are committed to keeping you informed about work on HS2. This includes ensuring you know what to expect and when to expect it, as well as how we can help.

Residents' Charter and Commissioner

The Residents' Charter is our promise to communicate as clearly as we possibly can with people who live along or near the HS2 route.

www.gov.uk/government/publications/hs2-residents-charter

We also have an independent Residents' Commissioner whose job is to make sure we keep to the promises we make in the Charter and to keep it under constant review. Find reports at:

www.gov.uk/government/collections/hs2-ltd-residents-commissioner

You can contact the Commissioner at:
residentscommissioner@hs2.org.uk

Construction Commissioner

The Construction Commissioner's role is to mediate and monitor the way in which HS2 Ltd manages and responds to construction complaints. You can contact the Construction Commissioner by emailing:
complaints@hs2-cc.org.uk

Property and compensation

You can find out all about HS2 and properties along the line of route by visiting:

www.gov.uk/government/collections/hs2-property

Find out if you're eligible for compensation at:

www.gov.uk/claim-compensation-if-affected-by-hs2

Holding us to account

If you are unhappy for any reason you can make a complaint by contacting our HS2 Helpdesk team. For more details on our complaints process, please visit our website:

www.hs2.org.uk/how-to-complain

Contact Us

Contact our HS2 Helpdesk team all day, every day of the year on:

 Freephone **08081 434 434**

 Minicom **08081 456 472**

 Email **HS2enquiries@hs2.org.uk**

Write to:

FREEPOST

HS2 Community Engagement

Website **www.hs2.org.uk**

To keep up to date with what is happening in your local area, visit:
www.HS2inyourarea.co.uk

Please contact us if you'd like a free copy of this document in large print, Braille, audio or easy read. You can also contact us for help and information in a different language.

HS2 Ltd is committed to protecting personal information. If you wish to know more about how we use your personal information please see our Privacy Notice
<https://www.gov.uk/government/publications/high-speed-two-ltd-privacy-notice>

Reference number: HS2-MW-EK-Ph1-Ar-Ce-C2-CR-28-22/04/2025

High Speed Two (HS2) Limited, registered in England and Wales.

Registered office: Two Snowhill, Snow Hill Queensway, Birmingham B4 6GA.

Company registration number: 06791686. VAT registration number: 888 8512 56