

Contact our HS2 Helpdesk team on **08081 434 434**

HS2 Update

Aylesbury | Summer 2025

EKFB
Working in
partnership with **HS2**

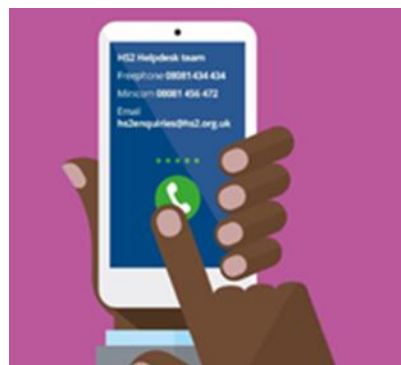
High Speed Two (HS2) is the new high speed railway for Britain. Should you have any questions or enquiries regarding our works, please contact the Helpdesk, details in this newsletter. We are keeping our local website www.hs2inbucksandox.co.uk up to date with on works in your area. You can join our local mailing lists for works updates at www.hs2.org.uk/local-mailing-list

What works are happening in your area?

Our newsletters are an important way to update local communities on the progress of the HS2 project. This newsletter has been created specifically for the Aylesbury construction area.

In this Summer edition of the newsletter, we have reviewed the progress of the works, what works are planned over the next few months and local community projects delivered:

- Works update from May 2025 to Autumn 2025
- Aerial footage
- Thame Valley viaduct key milestone
- Social value and supporting local schools
- HS2 Community and Business funds
- Construction progress
- Community projects
- Area Map (Quainton to Stoke Mandeville)
- Keeping you informed



Drop-in events

During the year we run a programme of planned community events and drop-in sessions with our Mobile Visitors Centre and at local community venues.

Community events will be arranged during the Summer.

To find out when your next local events are taking place, please visit the events page on the HS2 website.

www.hs2.org.uk/events

What's happening in your area?

A4010 Risborough Road closure (Stoke Mandeville) –

Construction work is continuing on the Stoke Mandeville Relief Road throughout the summer. The new road is being built to the west of the existing A4010 and will carry traffic over the HS2 line. There will be a series of lane closures and full road closures on the A4010 from May to late summer 2025. The new relief road is expected to open to the public in late summer 2025.



Above – Stoke Mandeville Relief Road construction underway

Meadoway closure at junction with the A418 Oxford Road

(Stone, Bishopstone and Hartwell) - We have installed temporary barriers to safely complete gas utility diversion works near the junction. Meadoway and Mayflower Close residents access has been maintained via Sedrup Lane. There will be a short term closure of the A418 Oxford Road in July to remove the barriers.



Above – Bicester Road (formerly A41) new road layout

A41 Bicester Road and Bicester Road (formerly A41)

(Waddesdon) – We'll be completing finishing works this year along the new narrowed road to include permanent signage, planting and footpath surfacing.

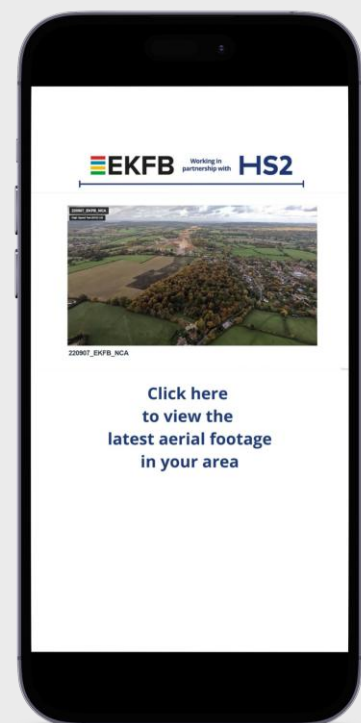
EKFB aerial footage

One of the best ways to see the progress we are making on site is from our aerial footage. If you scan the QR code below, it will allow you to view the latest HS2 works in your area.

The footage gives an annotated overview of where different structures will be found once HS2 is complete, along with an update of how the landscaping is currently looking.



Scan me!



Thame Valley Viaduct key milestone

Thame Valley, north-west Aylesbury

Thame Valley Viaduct

Early 2025 saw the successful installation of the final 90 ton beam on the 880 metre long Thame Valley Viaduct near Aylesbury. 72 of these giant beams span the 68 piers which make up the structure.

The viaduct, one of 15 viaducts being built by EKFB across the HS2 project, will be a key structure carrying the HS2 railway line over the river Thame and surrounding floodplain.

Construction will continue throughout 2025, with focus shifting to the deck and parapet installation. The viaduct is the first of its kind in the UK to have all its major parts manufactured off-site.

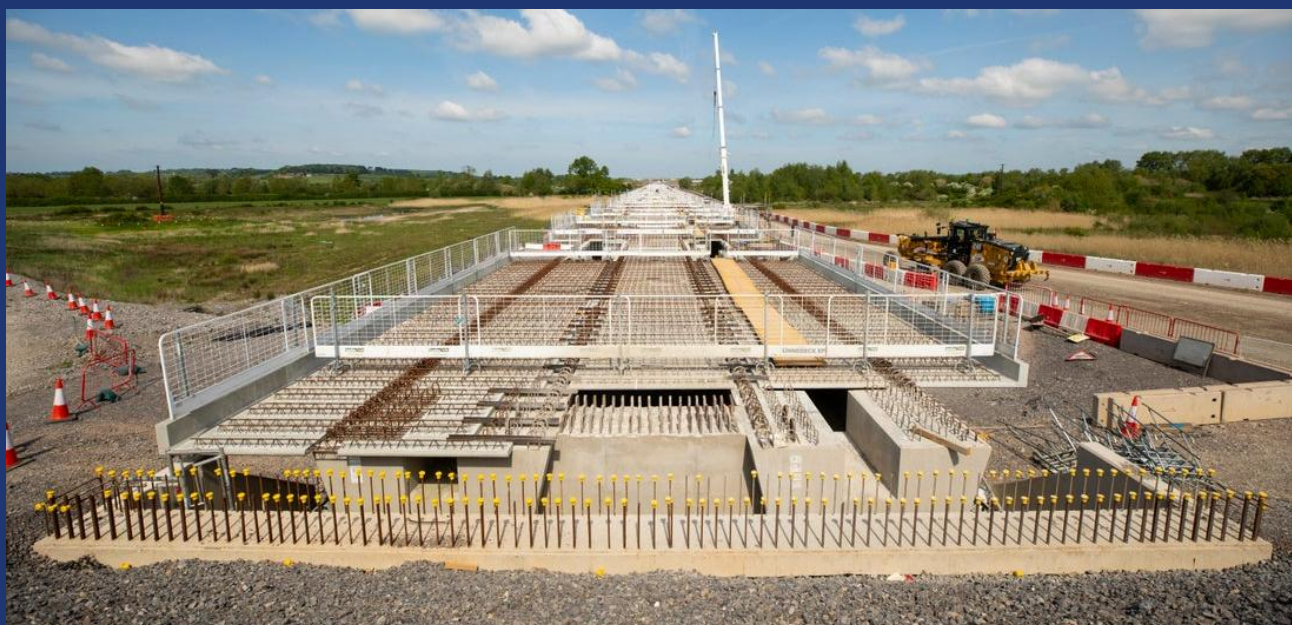
The making of the precast elements occurs in a factory setting which offers benefits in terms weather resistance, durability and strength, as the concrete curing process occurs under optimal conditions. Off-site fabrication also reduces the need for deliveries and on-site activity cutting carbon emissions by around a third and minimising noise, dust and disruption to the surrounding area.



Above – Thame Valley Viaduct ground level looking south



Above – Thame Valley Viaduct deck level looking south east



Above – Thame Valley Viaduct southern abutment looking north west

School social value projects

Turnfurlong Infant School, Aylesbury

The school wanted to create an exciting play area for the students. After approaching EKFB for support, we donated a pipe for students to climb over and through. The school had never seen so many excited faces when it was delivered.



Above – Tunnel pipe for play area at Turnfurlong Infant School

St Mary's C of E School, Aylesbury

As part of the plan to enhance their playground facilities, a request was made for pallets and cable drums. EKFB were able to recycle these items and deliver them to the school.

Waddesdon C of E School, Waddesdon

EKFB were thrilled to be able to support the reopening of the new 6th form building by sponsoring new seating installation in the building's auditorium. EKFB contributed £2000 towards the project as well as donating office furniture to school staff which was sourced and reused from EKFB offices.



Above – New 6th form auditorium seating at Waddesdon C of E School.

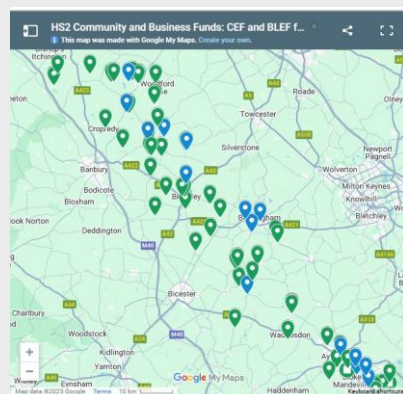
Community and business funds

Are you a local community group or business that's looking for support from HS2? The Community and Environment (CEF) and the Business and Local Economy Fund (BLEF) schemes will provide up to £40m of funding throughout the construction of HS2, supporting community-led projects.

You can find more information about eligibility and how to apply on the HS2 website.

Alternatively, you can get in touch with your local Community Engagement team to find out more information and support.

www.hs2.org.uk/in-your-area/community-funding/



Construction progress

Stoke Mandeville Relief Road and overbridge (Stoke Mandeville)

A new relief road and overbridge are being constructed which will bypass the village of Stoke Mandeville, diverting the A4010 Risborough Road from Freemantle Court to Lower Road. This project connects with the South East Aylesbury Link Road project, currently being built by Buckinghamshire Council.

Asphalt laying is complete on sections of the new road, while earthworks and installation of the road sub-base continues in other areas. Ongoing works also include footpaths being made ready for the installation of kerbs and ground surface stabilization, before further asphalt is laid.

Stoke Mandeville overbridge structure is now almost complete. Only completion of the parapets installation, waterproofing, back filling and laying the new road surface remain.

The Stoke Mandeville Relief Road is due to open to the public in late summer 2025.



Above - Section of the Stoke Mandeville relief road, showing the junction for Marsh Lane (left)



Above - Stoke Mandeville overbridge

Thame Valley viaduct (Fairford Leys, Aylesbury)

Following the final beam installation in early 2025, various works are continuing on the construction of the deck along the 880 metre viaduct.

Throughout the summer, we will be beginning parapet installation, continuing with formation works at the abutments to the north and south and pouring concrete for the viaduct deck itself.



Above - Thame Valley viaduct under construction

Construction progress

Sedrup culvert (Aylesbury)

There are several watercourses which are being diverted underneath the HS2 mainline through new culverts. The Sedrup watercourse was realigned through a new culvert earlier in 2025. Erosion proof netting was laid during the works. This netting helps prevent bank erosion, reduces sediment runoff and enhances the overall health of the watercourse ecosystem.



Above - Sedrup watercourse on its new alignment

Waddesdon south cutting

Landscaping at Waddesdon south cutting, showing the extensive tree planting works that has been completed before the end of the planting season in March. Across the North Chilterns and Aylesbury area, over 34,000 trees were planted along the HS2 trace during the first quarter of 2025.



Above - Tree saplings being planted on Waddesdon south cutting

Stoke Mandeville footbridge

One of the bridges being built to carry public rights of way over the HS2 mainline is for the SMA/9 footpath to the south of Stoke Mandeville. The bank seats, abutments, backfilling and two central piers are in all in place. Work will continue on the steel beam installation and concrete deck pour.



Above - SMA/9 overbridge piers under construction

Construction progress

Hartwell culverts

In the Hartwell area, on the site of the old Aylesbury Golf Course, two culverts are under construction.

Both are now fully assembled and the backfill of material is underway. These culverts will divert the local watercourse under the railway and footpath crossing.

These structures are made from pre-cast concrete segments. They include a mammal ledge inside the structure which ensures that animals can cross underneath the railway, even when the culvert is carrying water. You'll see this feature on the majority of the culverts that we have installed along the line of route.

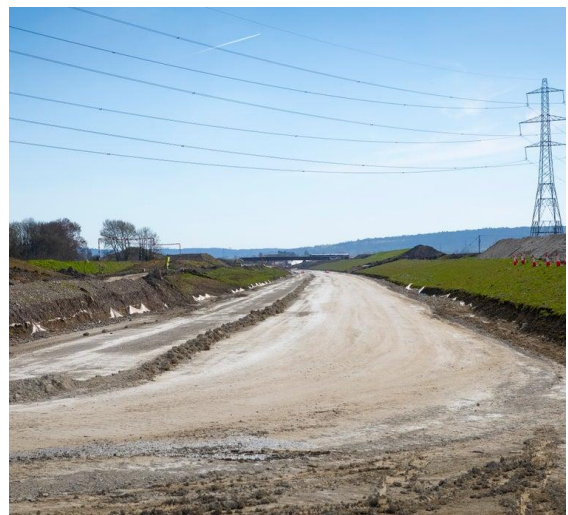


Above - Hartwell culverts prepared for

Aylesbury south cutting

Throughout 2025, earthworks and ground stabilisation have been underway at the Aylesbury south cutting.

The heavy clay soil has been removed and replaced with compacted chalk stone, reused from the Wendover green tunnel excavation, further to the south of Aylesbury. Earthworks will continue to build earth bunds and bank seats for footpath bridge crossings. To the north where the HS2 mainline will rise out of the cutting onto an embankment, piling works will commence for the installation of concrete noise barriers.



Above - Aylesbury south cutting

Community projects

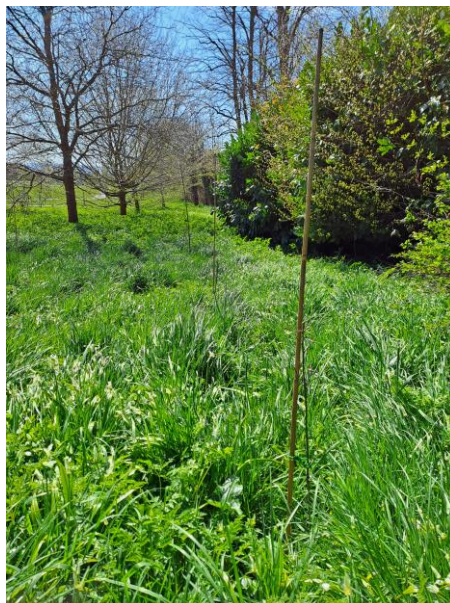
Tree donations to local planting projects

HS2 donated a variety of tree saplings to local community planting projects and green spaces.

There was an opportunity for volunteers to plant the trees in numerous locations, enhancing and creating green open spaces.

Eight community groups and stakeholders identified a range of local projects and green spaces that could be enriched. These included Waddesdon Parish Council, Aylesbury Town Council, Stone, Bishopstone and Hartwell Parish Council, Waddesdon C of E School, Bartletts Residential Care Home, National Trust Waddesdon Manor and National Trust Hartwell House.

In total over 30,000 saplings were distributed to coincide with the tree planting season in March and are now being enjoyed across the county.



Above - Donated tree saplings planted at Stone Recreation ground, Aylesbury

Carbon Heroes developing carbon saving initiatives

Students from the 6th forms of Waddesdon C of E School in Waddesdon and John Colet School in Wendover, battled it out over the course over 6 weeks to become Carbon Heroes through developing their own solutions to help EKFB reduce its carbon impact.

The award ceremony held at Buckinghamshire Railway Centre, saw Waddesdon C of E School win the Best Technical Report Award and Mentor MVP Award. John Colet School left with Best Dragon's Den Pitch and Best Innovation Award. We hope this has inspired some future thinkers and if you would like more information about how your school can work with us on future initiatives, then please do get in touch.

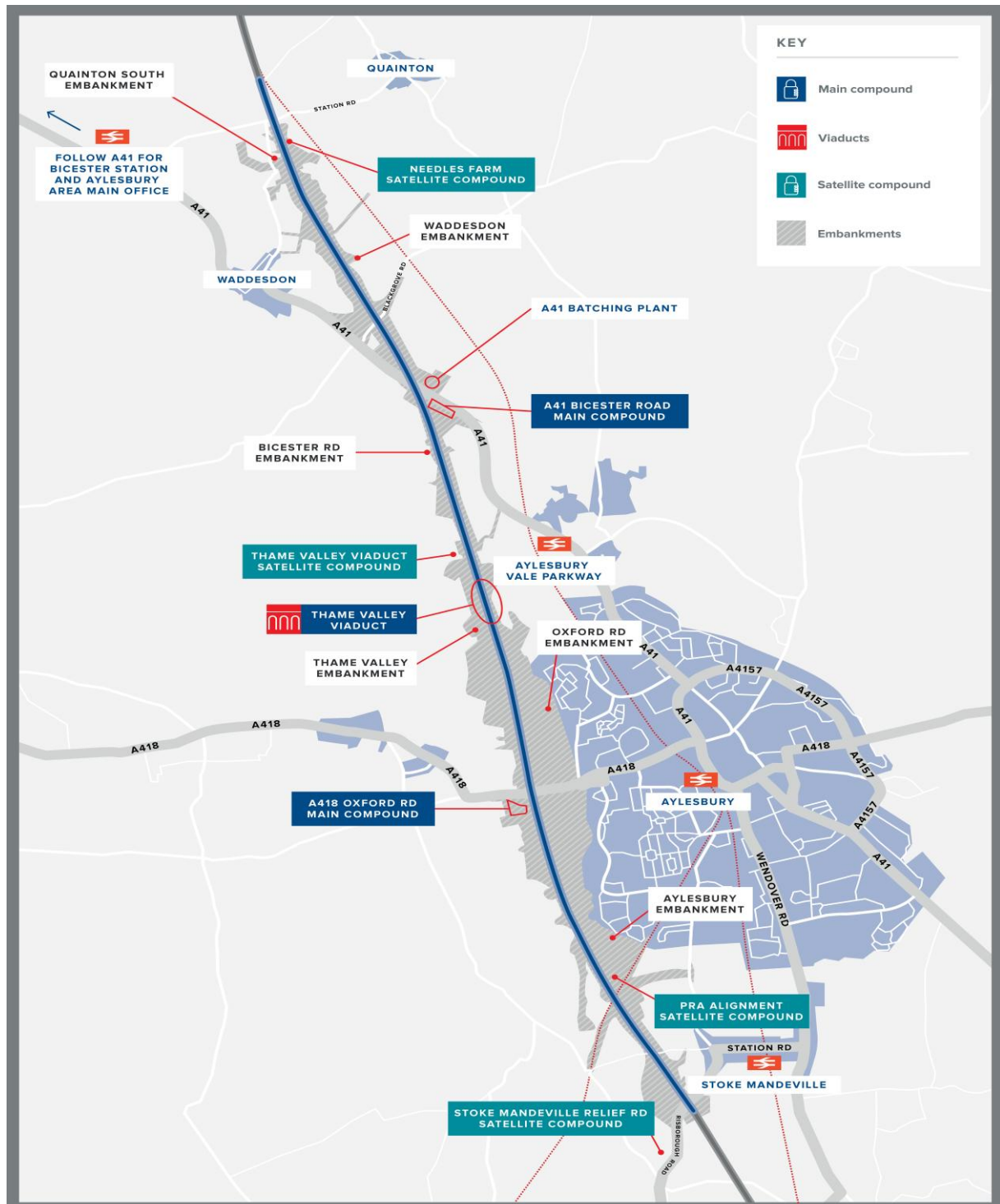


Above - Developing potential carbon saving initiatives

Area Map

Quanton to Stoke Mandeville

The map below shows the location of works in your area:



Keeping you informed

We are committed to keeping you informed about work on HS2. This includes ensuring you know what to expect and when to expect it, as well as how we can help.

Residents' Charter and Commissioner

The Residents' Charter is our promise to communicate as clearly as we possibly can with people who live along or near the HS2 route.

www.gov.uk/government/publications/hs2-residents-charter

We also have an independent Residents' Commissioner whose job is to make sure we keep to the promises we make in the Charter and to keep under constant review. Find reports at:

www.gov.uk/government/collections/hs2-ltd-residents-commissioner

You can contact the Commissioner at:
residentscommissioner@hs2.org.uk

Construction Commissioner

The Construction Commissioner's role is to mediate and monitor the way in which HS2 Ltd manages and responds to construction complaints. You can contact the Construction Commissioner by emailing:
complaints@hs2-cc.org.uk

Property and compensation

You can find out all about HS2 and properties along the line of route by visiting:

www.gov.uk/government/collections/hs2-property

Find out if you're eligible for compensation at:

www.gov.uk/claim-compensation-if-affected-by-hs2

Holding us to account

If you are unhappy for any reason, you can make a complaint by contacting our HS2 Helpdesk team. For more details on our complaints process, please visit our website:

www.hs2.org.uk/how-to-complain

Contact Us

Contact our HS2 Helpdesk team all day, every day of the year on:

 Freephone **08081 434 434**

 Minicom **08081 456 472**

@ Email **HS2enquiries@hs2.org.uk**

Write to:

FREEPOST

HS2 Community Engagement

Website **www.hs2.org.uk**

To keep up to date with what is happening in your local area, visit:
www.HS2inyourarea.co.uk

Please contact us if you'd like a free copy of this document in large print, Braille, audio or easy read. You can also contact us for help and information in a different language.

HS2 Ltd is committed to protecting personal information. If you wish to know more about how we use your personal information please see our Privacy Notice
<https://www.gov.uk/government/publications/high-speed-two-ltd-privacy-notice>

Reference number: HS2-EKFB-25-1015

High Speed Two (HS2) Limited, registered in England and Wales.

Registered office: Two Snowhill, Snow Hill Queensway, Birmingham B4 6GA.

Company registration number: 06791686. VAT registration number: 888 8512 56