

Contact our HS2 Helpdesk team on 08081 434 434

HS2 Update

Calvert | Summer 2025

EKFB
Working in
partnership with **HS2**

High Speed Two (HS2) is the new high speed railway for Britain. Should you have any questions or enquiries regarding our works, please contact the Helpdesk details of which can be found in this newsletter. We will be keeping our local website www.hs2inbucksandox.co.uk up to date with information on our works in the local area

What's inside this newsletter

Our newsletters are an important way to update local communities on the progress of the HS2 project. This newsletter has been created specifically for the Calvert construction area (CA), located between Twyford and Quainton in Buckinghamshire.

In this edition of our newsletter, we will be looking at the latest information on upcoming works, community projects and events.

- Construction update to include;
 - Perry Hill overbridge and Gawcott Road realignment
 - West Street overbridge
 - Charndon Lodge pumping station
 - Calvert Road (School Hill) green overbridge
 - Calvert Green overbridge
 - Sheephouse Wood
 - GUN/28, QUA/36 and Station Road overbridge
 - Bat Structure Q&A
 - Nesting season
 - Community investment



Join us at our next community site tour to see our works up close!

Each month we organise a community site tour which takes visitors from Twyford to Quainton along our site access road adjacent to the HS2 route. A great opportunity to see how our earthworks are managed, structures are progressing and ask questions to EKFB experts.

Please contact the HS2 helpdesk to reserve your space!

Construction update



Perry Hill overbridge and Gawcott Road realignment

Kerb installation and tarmacking on the bridge are now complete, plus the installation of the vehicle restraint system during March. Gas diversion works are ongoing with a closure in place at the Steeple Claydon to Twyford crossroads to accommodate these works. Utility diversions and protection works are ongoing. Protection slabs are being constructed to accommodate the new realigned highway junction. Drainage works are on track and 80% completed. The new alignment will be complete by the summer of 2025 when you will be able to drive over the bridge.



The image above shows tarmac being laid on Perry Hill overbridge which will accommodate the newly aligned Gawcott Road

West Steet overbridge

Wingwalls were completed in March followed by outer bridge deck ends completed at the end of April. The parapet installation will begin towards the end of May/early June. The western embankment backfill has commenced therefore we have re-opened the plant crossing point on Portway Road which will be used to transport materials. In late 2025, utilities works will be complete and the new aligned road will open over West Street overbridge in the spring of 2026.

Charndon Lodge pumping station

- Charndon Lodge pumping station has been completed and is commissioned.
- The pumping station has been installed to manage surface water run off on the new Gawcott Road alignment.



Construction update

Calvert Road, (School Hill) green overbridge

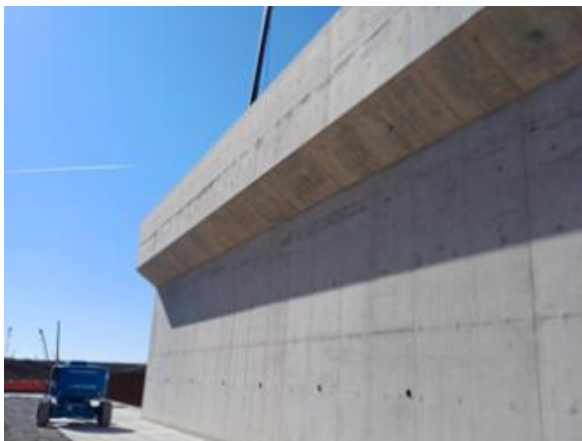
School Hill bridge connects the villages of Calvert Green and The Claydon's. The old bridge was demolished in January 2024 and we are currently constructing a new 30m wide green bridge.

Works are underway on the central pier which will support the bridge deck. On completion of the walls and central pier, wing wall construction will commence.

When the wing walls are complete the bridge will be ready for the installation of bridge beams in 2025.



The image above shows the piers being poured at School Hill overbridge



The image above shows the east abutment walls on Calvert Green overbridge

Calvert Green overbridge

East and west abutments and pier walls including corbels – a weight-bearing element to support the structure above, and plinths – a level concrete base for the bridge bearing to sit on, are now complete.

Finishing works for all three abutments are underway to allow the backfilling and approach works which follow.

Wing walls are progressing and set for completion in early June 2025.

Construction update

Sheephouse Wood



The image above shows the first 23 pairs of arches in place

The bat protection structure is being built alongside Sheephouse Wood in Buckinghamshire.

The structure itself is a significant piece of engineering which is required to have a design life of 120 years. The design is durable and requires little maintenance, reducing overall costs and material.

The installation of 380 precast concrete arches, with a combined total of 870 precast elements will be positioned to form the tunnel. This creates a light, smooth structure, capable of self-ventilation.

The structure will be around 1km in length and up to 10m high, and will embed itself into the backdrop of the woodland. It will provide shielding for bat flight paths from passing trains and provides connectivity points for wildlife with a green bridge and underpass.

The structure is built with future growth in mind, providing space for two additional tracks that could support local rail services in future developments.

Construction update



GUN/28 overbridge

GUN/28 overbridge

This 42m wide green overbridge will provide bridleway and footpath access for the public. The bridge also serves as a connection to the FCC, energy for waste plant railway sidings.

Following completion of the bridge deck, the east and north approach containment walls were completed and backfilled. Preparations for constructing the south and west approach containment walls are almost complete.



QUA/36 overbridge

QUA/36 overbridge

QUA/36 is a 48m wide green overbridge. It is situated just south of Edgcott Road and will be used as a footbridge. Construction of the wing walls are in progress. This will be followed by water-proofing and then the back of wall drainage works will commence. The platform for the girder assembly and installation is complete and ready for the first girder delivery.



Station Road overbridge

Station Road overbridge

Station Road overbridge is 30m long and connects on the north side with the Network Rail overbridge and with the cycle underpass on the south. It is part of the Station Road realignment.

The pile caps have been completed and backfilled. The abutment wall reinforcement is currently being installed on both sides of the structure before concrete being cast.

Want to find out more about our works?

Sign up to the mailing list by visiting the HS2 website where you can be the first to be updated with the following;

- Advance works notices to inform you of upcoming works in your area which includes road closures and traffic management
- Details of upcoming engagement events including our mobile visitor centre, village hall drop-ins or online event; and
- Regular copies of our newsletters.

www.hs2.org.uk/in-your-area



Bat Structure Q&A

Why

Sheephouse Wood is home to 13 species of bat, including Europe's most northerly known population of Bechstein's bat. To build the railway, HS2 must be able to satisfy environmental legislation. Natural England estimate that there is a population of around 300 Bechstein's across the wider Bernwood area, which includes this species of bat residing in Sheephouse Wood.

Where

The structure passes between Sheephouse Wood Site of Special Scientific Interest and a landfill site called FCC near Calvert.

What

The structure is approx. 1km in length and made of a high-performance weathering steel mesh supported by concrete arches. The northern portal is formed by a landscaped 'green bridge' which also carries a footpath across the railway while the southern portal incorporates a drainage culvert and footpath under the railway.



Artist's impression of
Sheephouse Wood Bat
Protection Scheme



A Bechstein bat

Nesting season

Site preparation for bird breeding season

This generally occurs from early to mid-February (depending on seasonal conditions) and continues until the end of August each year. Some species do however nest all year round.

It is an offence under the Wildlife and Countryside Act 1981 to intentionally move, damage or destroy the nest of any wild bird, even if it is yet to contain eggs or chicks, and is still being built.

Birds typically nest in areas of vegetation, buildings and on the ground, albeit some species are opportunistic and nest in plant, vehicles and machinery.

- All Project Ecologists and Ecology Clerk of Works (ECoWs) are carrying out toolbox talks on sites as a reminder to check plant, machinery and vehicles for nesting birds on a daily basis, including engine compartments and concealed compartments where nests can be missed.
- All on-site teams are briefed to be vigilant regarding the risk of nesting birds and to stop works if a suspected nest is found, whilst the area is checked by an ECoW.
- If nesting birds are unexpectedly found, that could be impacted by EKFB activities, all works within the immediate area must stop, and a minimum buffer zone of 5-10m will be implemented (dependent on species and activity).
- The Project Ecologist should then be consulted for further advice on how to proceed. No attempt to disturb or move the nest is permitted.
- All active nests must be retained and monitored by the ECoW until the young have fledged.



Dinner time!



Nest with two eggs which was left undisturbed



This bird thought our machinery was a perfect place to build a nest!

Community investment

Hold the door! It's Open Doors Week

In collaboration with Build UK, we opened our doors for another year to welcome local schools across the trace for a chance to go behind our site hoardings, and to learn all about the potential roles and apprenticeships that one day could come knocking at their door.

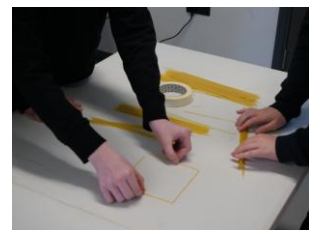
The first group of students from Buckingham School were transported to our West Street compound, in Calvert, where they were greeted by our teams across EKFB and Kier Transportation. To give the students a flavour of the works we are carrying out we gave them a minibus tour around the north side of Calvert and had a discussion on how we embrace challenges.

Our people across a wide range of functions and supply chain partners came and spoke to the students to talk about the job roles you would expect to see when building a high-speed railway line, and what type of career journey they took when taking on those roles. To give the students a taste of a typical day on-site, Flannery kindly brought along their plant simulator for the students to test their skills behind the wheel of various plant machinery that is used on site.

The site visits were not complete without putting the students to the test to see how they fared at building their own bridges. Unable to get their hands on some pre-cast beams, the students were handed some slightly alternative materials of dried spaghetti and masking tape. Led by our EKFB Skills, Education, and Employment team and Kier Transportation, who judged accordingly on who's structure held up the best.



Site tour



Working it out – hands on



Lined up ready for action

'a huge thank youespecially to the employees who presented information snippets of info about the careers and HS2 site, and for fielding loads of questions on the excellent site tour...'

Community investment

International Women's Day

At EKFB – Calvert, we actively marked this important day by celebrating our female colleagues and recognising their invaluable roles within our organisation. We are committed to fostering an environment where every woman feels empowered, appreciated and encouraged to reach her full potential.

Our celebrations extend beyond mere recognition; they involve engaging discussions about how we can collectively contribute to empowering all women and girls. This includes creating opportunities for growth, promoting gender equality and ensuring that women's voices are heard and valued in all areas of life. It is essential to acknowledge that empowerment is not just a one-day event but an ongoing journey that requires dedication and action from us all.

At EKFB we firmly believe that our vision and mission for belonging, diversity and inclusion should permeate every aspect of our work culture throughout the year – not just on designated days or months. Our commitment to these principles spans 365 days a year, as we strive to create a workplace that truly reflects and respects the diverse society we live in. By nurturing a supportive and inclusive environment, we aim to inspire positive change and foster a sense of belonging for everyone.



The Calvert female workforce



West Street overbridge in the background



Cupcakes to celebrate. Kindly decorated by one of our own



Female site operative

Community investment



Steeple Claydon Easter Eggs

Each year Cllr Frank Mahon organises an Easter Eggs delivery for the children in Steeple Claydon village to ensure each child receives an egg at Easter. This year, EKFB were again very 'eggcited' to have been able to donate all 500 Easter Eggs which 20 volunteers including MP Greg Smith hand delivered on Good Friday.

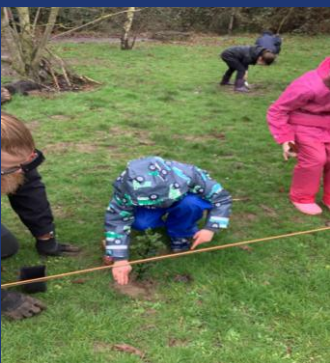


Fiddlers Field Bridge bricks

As per the request from Quainton Parish Council, the construction team carefully removed the bricks when demolishing Fiddlers Field bridge, in order for these to be re-used in an upcoming community project. Hopefully we will be able to reveal details of this in the next edition of this newsletter!

Steeple Claydon allotment carpark

A request came into the Team from Steeple Claydon Allotment committee for membrane and stone to utilise an area next to the allotment for members to park. EKFB were happy to help by donating a large roll of membrane.



Saplings

With the support of our supply chains, EKFB delivered hundreds of saplings across the EKFB trace to help enhance community spaces. This offer was gratefully accepted by Steeple Claydon Angling Club, Calvert Green Parish Council, National Trust, Greatmoor Sailing Club, Marsh Gibbon Village Hall and Steeple Claydon School.

Community investment



Litter pick – Calvert Cottages, School Hill, Addison Road and Steeple Claydon playground

Eighteen volunteers from our School Hill compound were joined by Enva who kindly provided litter pickers, to brave the January elements to litter pick in the Steeple Claydon area. We gathered an astonishing 30 bin bags, which were disposed of at our compound.

Quainton Monday Club

EKFB staff are volunteering in June and have donated £1000. In addition to this HS2 Community & Environment Fund (CEF) have donated £9000 of funding for weekly entertainment and crafting activities for older member of the community who attend the centre.



Quainton Windmill repairs

EKFB were happy to contribute towards the repair of this traditional, iconic Victorian windmill. One of the sails needed major repair and at the same time the other three sails were modified to maintain their stability.



Keeping you informed

We are committed to keeping you informed about work on HS2. This includes ensuring you know what to expect and when to expect it, as well as how we can help.

Residents' Charter and Commissioner

The Residents' Charter is our promise to communicate as clearly as we possibly can with people who live along or near the HS2 route.

www.gov.uk/government/publications/hs2-residents-charter

We also have an independent Residents' Commissioner whose job is to make sure we keep to the promises we make in the Charter and to keep it under constant review. Find reports at:
www.gov.uk/government/collections/hs2-ltd-residents-commissioner
You can contact the Commissioner at:
residentscommissioner@hs2.org.uk

Construction Commissioner

The Construction Commissioner's role is to mediate and monitor the way in which HS2 Ltd manages and responds to construction complaints. You can contact the Construction Commissioner by emailing:
complaints@hs2-cc.org.uk

Property and compensation

You can find out all about HS2 and properties along the line of route by visiting:
www.gov.uk/government/collections/hs2-property
Find out if you're eligible for compensation at:
www.gov.uk/claim-compensation-if-affected-by-hs2

Holding us to account

If you are unhappy for any reason you can make a complaint by contacting our HS2 Helpdesk team. For more details on our complaints process, please visit our website:
www.hs2.org.uk/how-to-complain

Reference number: HS2-MW-EK-Ph1-Ar-Ce-C2-CR-24-09/04/2025

High Speed Two (HS2) Limited, registered in England and Wales.
Registered office: Two Snowhill, Snow Hill Queensway, Birmingham B4 6GA.
Company registration number: 06791686. VAT registration number: 888 8512 56

Contact Us

Contact our HS2 Helpdesk team all day, every day of the year on:

 Freephone **08081 434 434**

 Minicom **08081 456 472**

@ Email **HS2enquiries@hs2.org.uk**

Write to:

FREEPOST
HS2 Community Engagement

Website **www.hs2.org.uk**

To keep up to date with what is happening in your local area, visit:
www.HS2inyourarea.co.uk

Please contact us if you'd like a free copy of this document in large print, Braille, audio or easy read. You can also contact us for help and information in a different language.

HS2 Ltd is committed to protecting personal information. If you wish to know more about how we use your personal information please see our Privacy Notice:
<https://www.gov.uk/government/publications/high-speed-two-ltd-privacy-notice>