

SKANSKA



STRABAG

Working in
partnership with

HS2

Mandeville Road Vent Shaft

Quarterly meeting, 10 March 2025

Housekeeping

- Toilets
- Fire procedure
- Refreshments are available
- We appreciate that you might have questions or comments about our works – there will be opportunity for questions
- We may not be able to assist with questions relating to personal matters at tonight's meeting – our local engagement team are happy to arrange a time to speak with you directly



What we will cover

- Tunnelling update
- Overview of current and upcoming works
- Works to build the headhouse
- Responses to comments and questions raised at the last meeting
- Any other business



Delivering HS2 London Tunnels

What we are doing

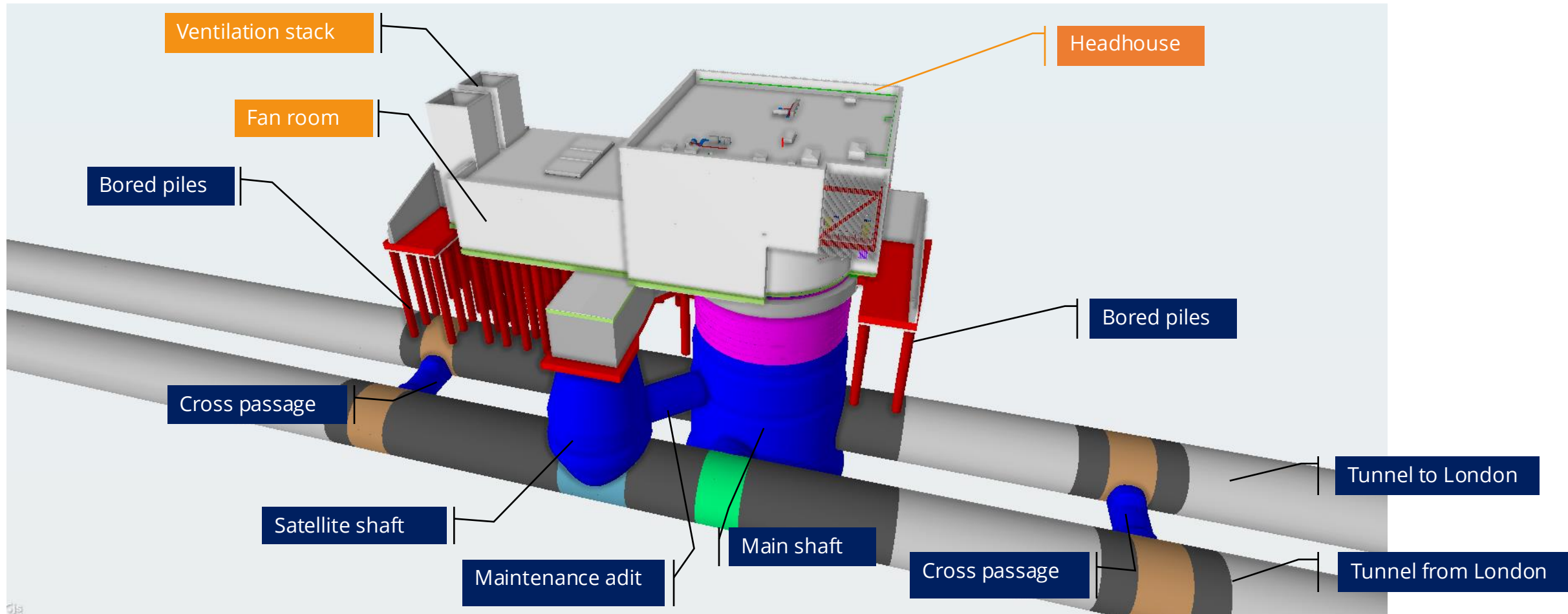
Skanska Costain STRABAG Joint Venture (SCSJV) are working in partnership with HS2 Ltd to build 16.4 miles (26.4 kilometres) of the high-speed railway between Euston and West Ruislip.

This includes 13 miles (21 kilometres) of tunnels and the associated ventilation (vent) shafts and headhouses to provide access to the tunnels for maintenance and emergency services, ventilation and power supply.



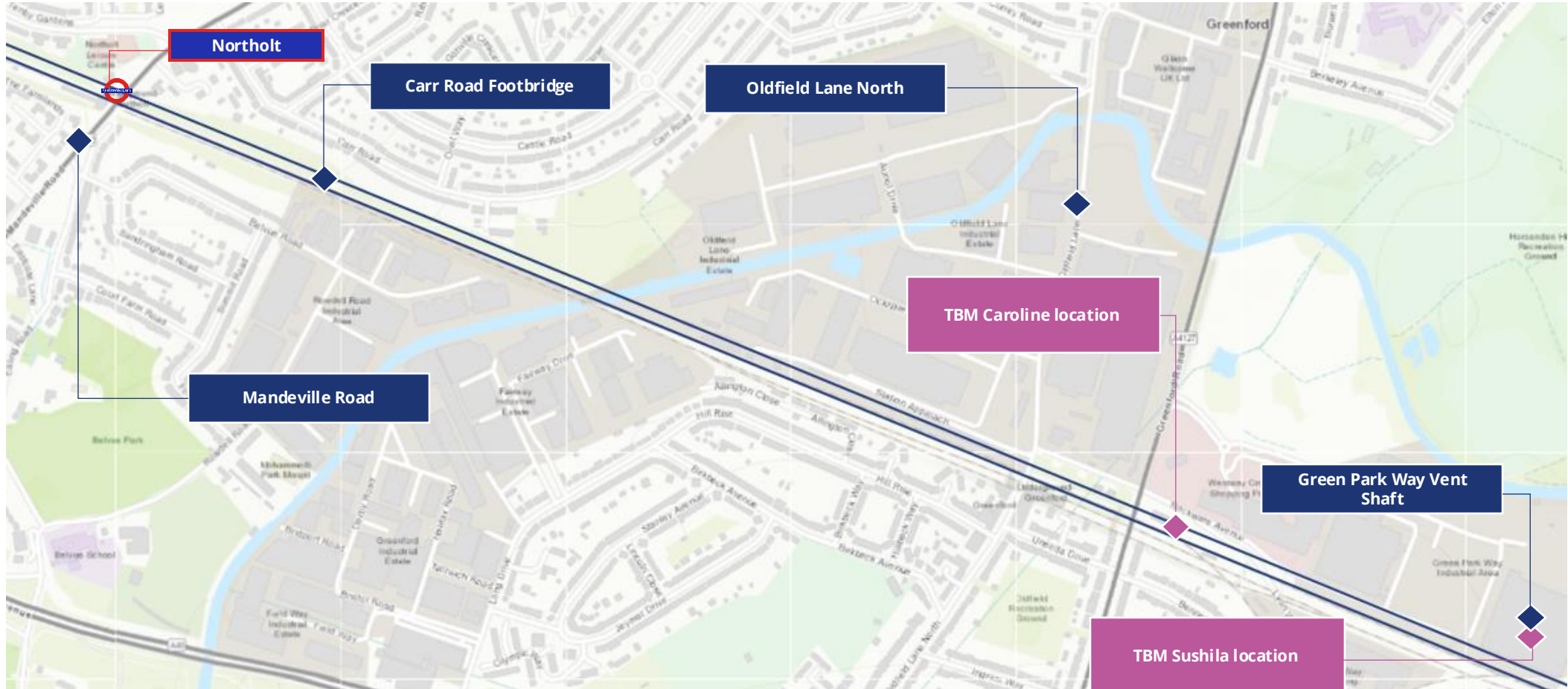
Mandeville Road site

We are building a main ventilation shaft, satellite shaft and headhouse at the Mandeville Road site. These will connect to the HS2 London tunnels.



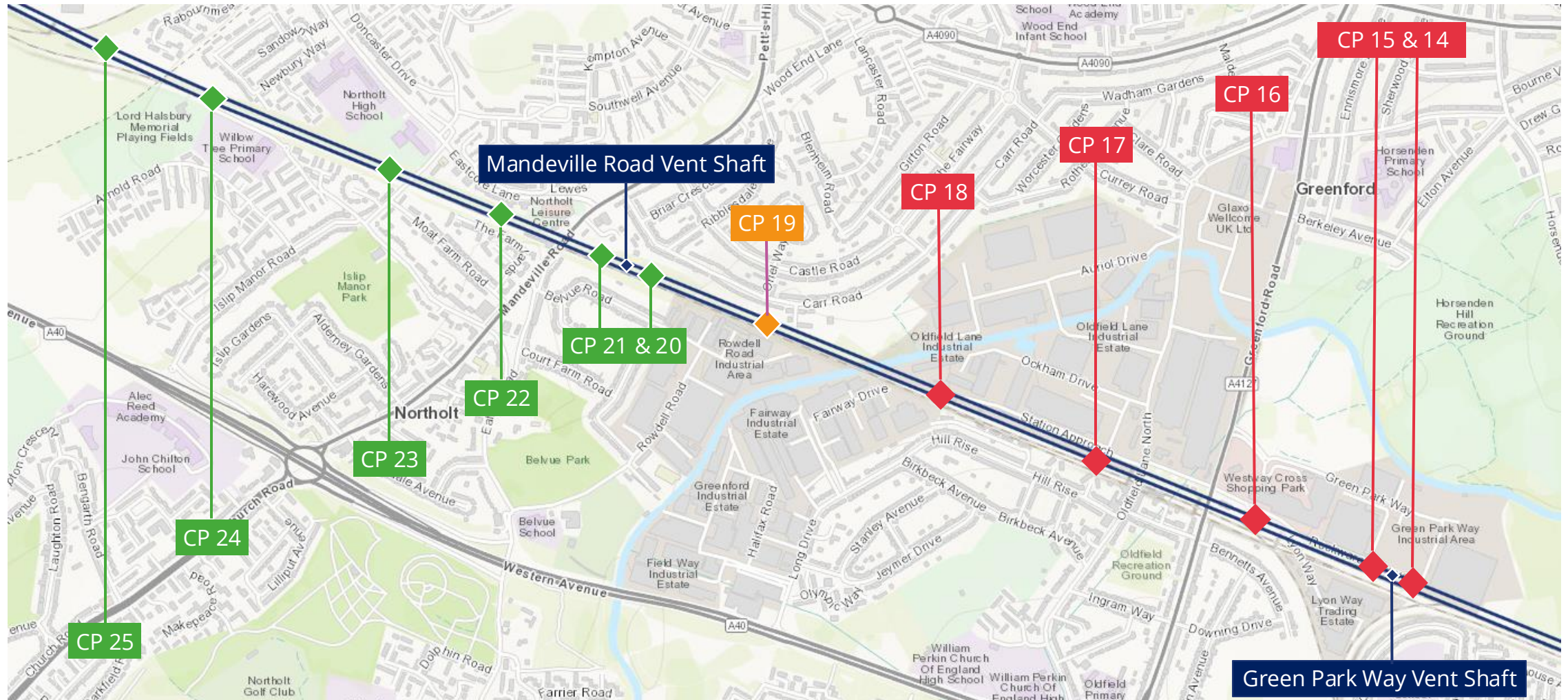
Northolt Tunnel West tunnelling progress

The tunnel boring machines (TBMs) building Northolt West Tunnels have now passed through the Mandeville Road site. We have a rolling engagement programme including newsletters, advanced notification letters, door knocks and virtual 1:1s about tunnelling. TBM Sushila has arrived at the Green Park Way Vent Shaft in Greenford and is awaiting extraction.



Northolt Tunnel West cross passage works

We are building cross passages about 500 metres apart along the tunnels route. These are short tunnels below ground that connect the two tunnels. The cross passages will allow HS2 passengers to get to a place of safety in an emergency.



Works programme – Mandeville Road site

The table below includes a high-level summary of ongoing and future works at the Mandeville Road site.

Due to the changes in the SCSJV wide programme, there have been changes to our Mandeville Road site programme.

Planned works	Indicative dates*
Shaft construction (completion)	Summer 2025
Headhouse construction	Spring 2025 to summer 2026
Additional stabilisation works to railway slope	Winter 2025/2026 to winter 2026/7^
Utilities works in existing site access	Winter 2025/2026 to winter 2026/7^
Reopen existing access to site traffic	Winter 2025/2026
Planned completion of SCSJV works at Mandeville Road site	Summer 2027

^These works will impact the existing site entrance on Mandeville Road. Due to changes in the programme, we are deferring our proposals to use Badminton Close as a temporary site access to and from the Mandeville Road site to early 2026. We will be writing to Badminton Close residents with further information about this shortly..

Works planned in March to June 2025

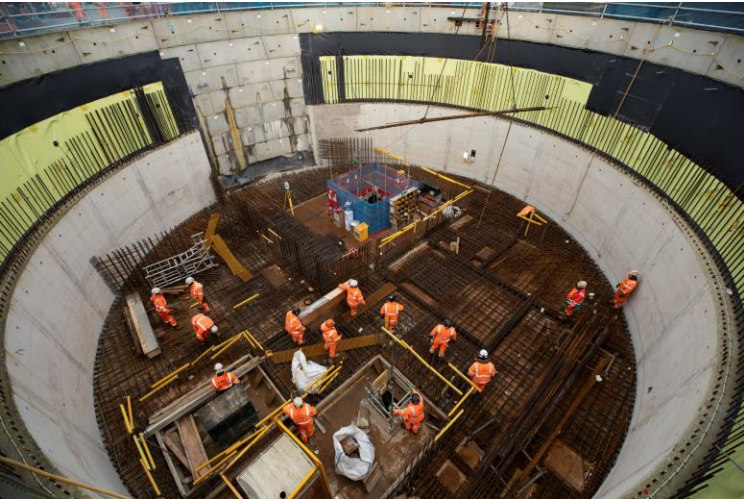
Building the main shaft and satellite shaft

From March to June 2025, we'll continue works to build the main shaft and satellite shaft at our Mandeville Road site.

These works will include:

- Steel fixing, shuttering and concreting works
- Excavation works

We expect works to build the shafts will be completed in June 2025*.



*These dates remain subject to change.

Works planned in March to June 2025

Building the headhouse and other works on site

Works to build the headhouse

From April 2025, we'll start works to build the headhouse.

In spring to summer 2025, we'll build the headhouse base slab. This will require concrete pours.

Following this, we'll install reinforced concrete walls to build the headhouse.

We expect works to build the headhouse will be completed in early 2026*.

Other works planned on site between March and June 2025 include:

- Installation of the second tower crane
- General site maintenance and security
- Drainage works
- Deliveries and collections to and from site
- Groundworks and landscaping

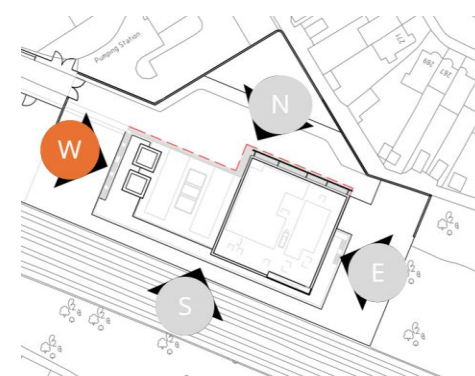
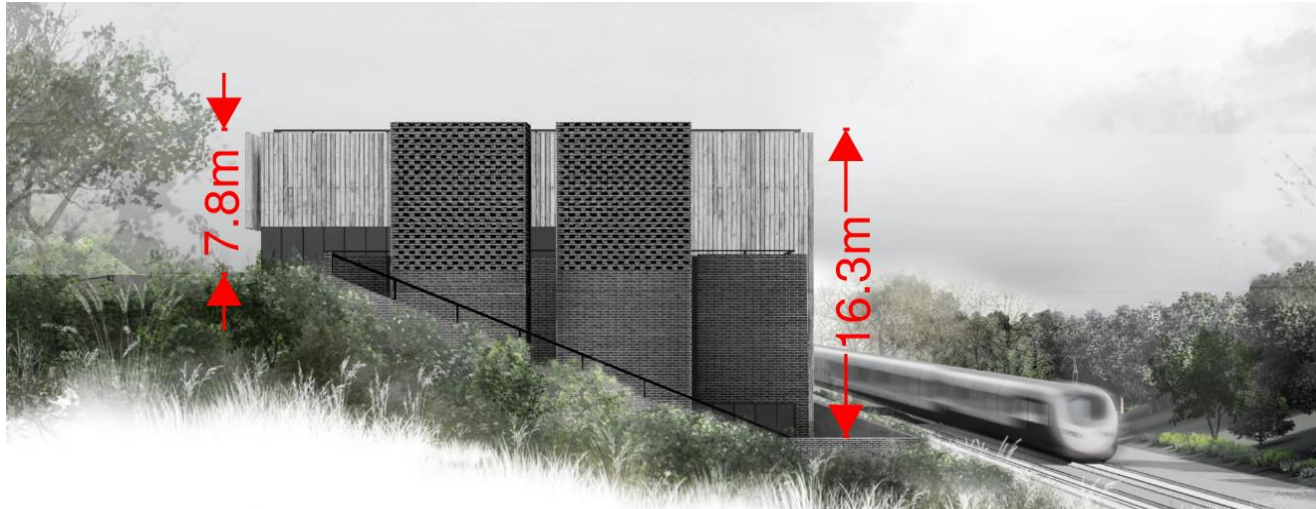
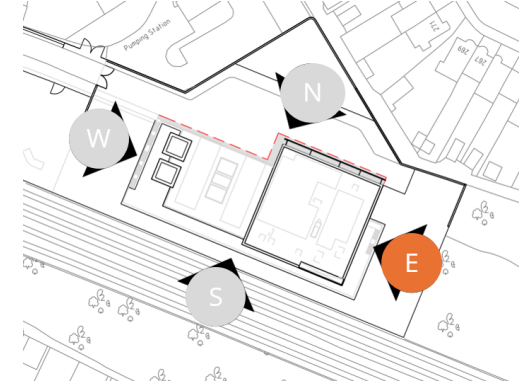
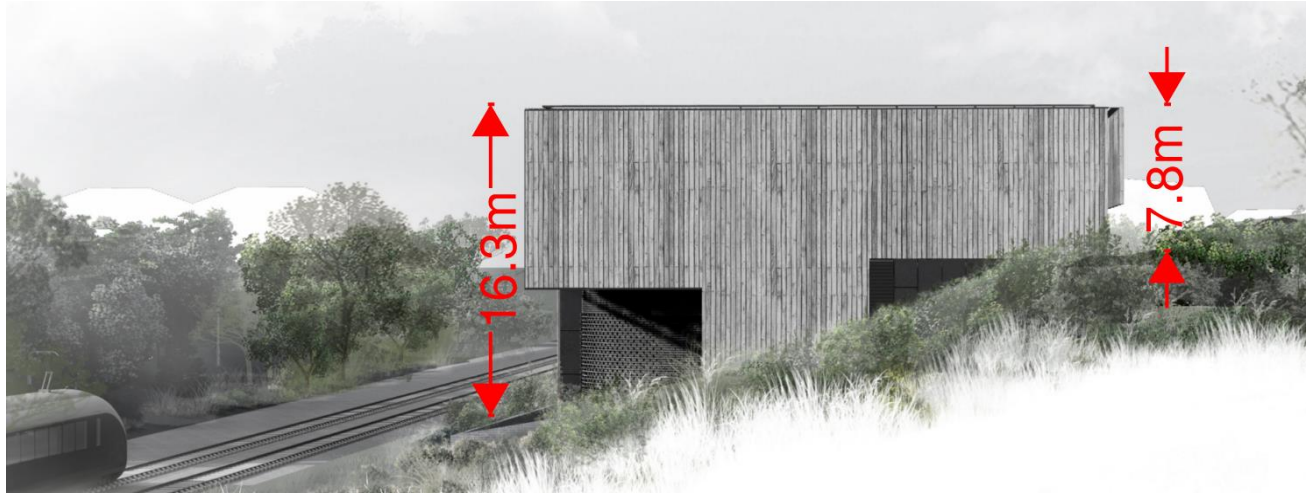
Other works in your local area may include:

- Monitoring (ongoing)
- Post-tunnelling utility surveys (dates to be confirmed)

We'll write to you about any works that might impact you.

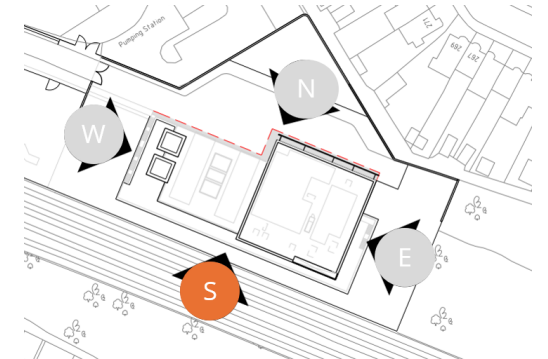
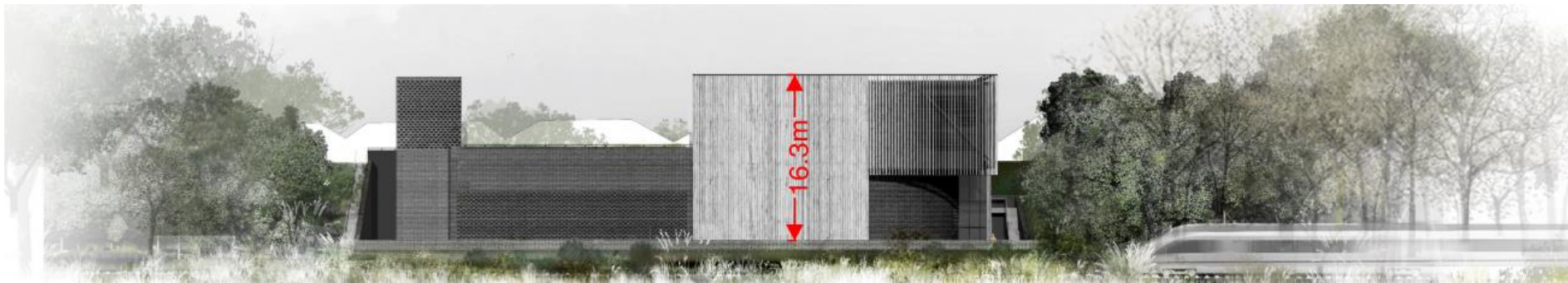
Building the headhouse

The images show visualisations of the headhouse.



Building the headhouse

The images show visualisations of the headhouse.



Landscaping plans

Landscaping works will take place when works to build the vent shafts and headhouse are complete. The landscaping works are currently expected to take place in early 2027.

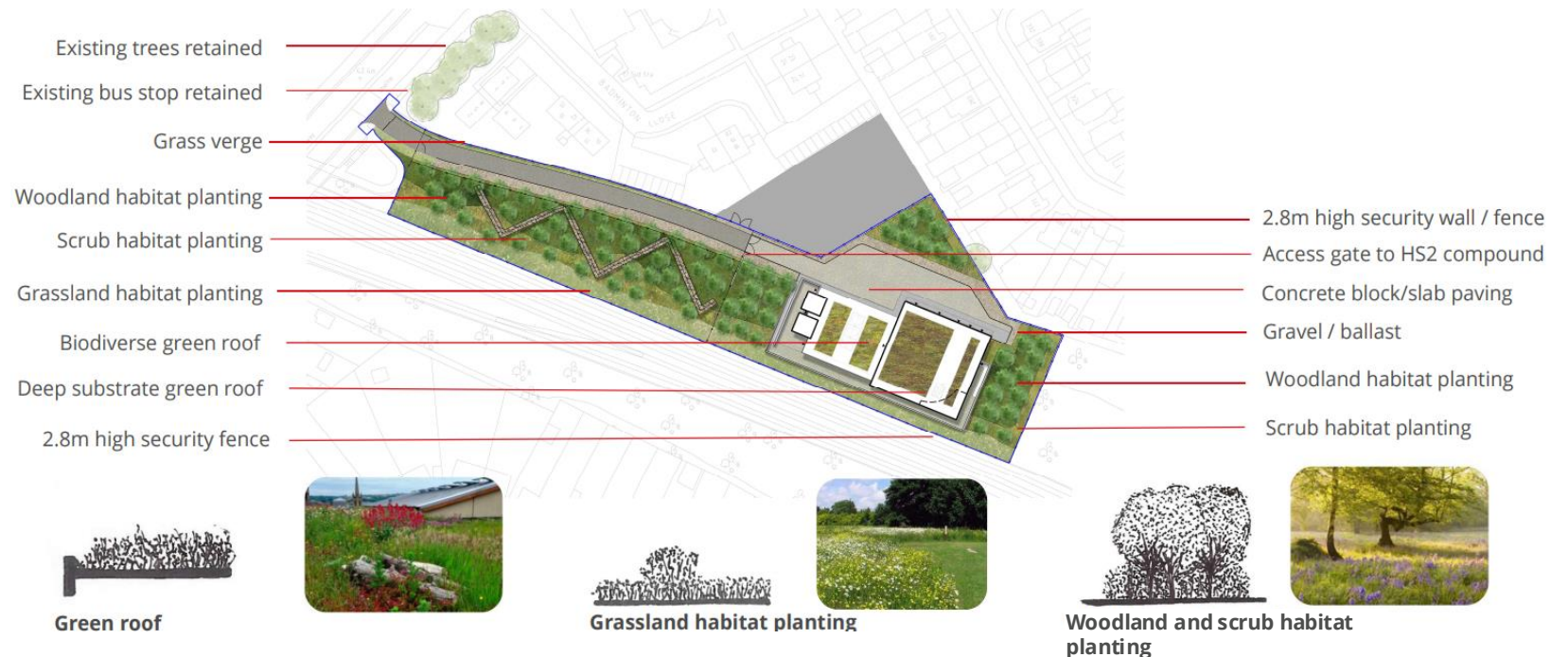
You asked:

What is the purpose of the green roof?

Our response:

Our landscaping design includes a green roof and a mix of vegetation, which will assist with blending the headhouse structure into the natural environment. Specifically, the purpose of the green roof is to assist with:

- Carbon benefits (thermal/CO2)
- Drainage improvement
- Wildlife habitat
- Air purification



Future landscaping

You asked:

What will the future landscaping look like? Will the trees be mature?

Our update:

The woodland canopy species in the landscaping design include a wide range of native trees for wildlife benefit and to improve biodiversity of the site.

Tree species have been carefully designed in response to the local context and to provide physical and visual connectivity. We anticipate that trees included in the landscaping design will take five to 10 years to mature.

The images to the right are indicative visualisations of what the future landscaping may look like one year and 15 years after works are completed at the Mandeville Road site.

Indicative visualisation from railway bridge on Mandeville Road



Indicative visualisation from Affinity Water land



Responding to questions from our last meeting



You asked	Our response
How high are the tower cranes cabs on-site at Mandeville Road?	The tower crane cabs will be about 11 metres high from the top of the embankment.
How will my privacy be protected during use of the tower cranes?	We raised this concern with the Mandeville Road site team. We expect the crane operatives to be paying attention to crane operations at all times while in the crane cab, with visual focus on works taking place on site.
When will Carr Road footbridge re-open?	SCSJV passed on resident concerns about the Carr Road footbridge to Network Rail. Network Rail is continuing to monitor the bridge and hopes to reopen it later this year.
Can you hold a drop-in for residents with questions about small claims?	We held a small claims drop-in just prior to this meeting. This was targeted at residents who have previously contacted us with questions about the small claims process. If you feel that your property (building or personal property) has been damaged as a result of HS2 works, please contact the HS2 Helpdesk.
What will happen to the Affinity Water land when SCSJV / HS2 hand this area back?	At the last meeting, we advised that SCSJV and HS2 are not aware of Affinity Water's future plans for this site. We currently do not have any further information about this.
Why is there still a single lane traffic sign on Mandeville Road?	We have looked into this with our traffic management team. The signage is required for deliveries to the site when operatives may need to close one lane or stop both lanes for short period. The signage needs to remain on Mandeville Road so that our traffic marshals can deploy it quickly when vehicles are arriving at or leaving our site.
Is flooding behind and next to the bus stop due to SCSJV / HS2 works?	The flooding behind the bus stop and on the footway is not due to SCSJV works. Residents can report concerns about footways directly to Ealing Council - www.ealing.gov.uk/info/201152/roads_highways_and_pavements
Can the tower crane arm be moved? It is impacting my TV signal.	It is for your service provider to investigate your concerns and address any reception issues. They are responsible for ensuring you receive the service you are paying for, and you have a contract with them which should set out what you can do if you are experiencing issues with reception.

If you have a question about HS2 or our works, please contact our HS2 Helpdesk team on 08081 434 434 or email hs2enquiries@hs2.org.uk. Your concerns will be logged and a reference number will be provided to you.

Community engagement



Engagement lookahead 2025

Resident meetings (quarterly)

We'll continue our quarterly resident meetings in 2025. Possible dates are listed below:

- 9 June
- 8 September
- 8 December

We'll write to you to confirm the details of these meetings.

We'll also run a site visit in summer 2025 (to be confirmed)

Keeping you informed

You can sign up for the latest updates about works on site via email or view these online at www.hs2.org.uk/in-your-area/local-community-webpages/hs2-in-brent-and-ealing/

In the community and monthly virtual 1:1s

Our local engagement team will be out and about in your local area throughout the year.

We also hold virtual 1:1s throughout the year about our works. You can register for 20-minute slot at www.hs2.org.uk/events

Contact us

We are always happy to speak with you. Please contact the HS2 Helpdesk if you would like to speak to our local engagement team.

Freephone:

08081 434 434

Email:

HS2enquiries@hs2.org.uk

Community investment update

Northolt Village Community Hall – renovation works

In 2024, we carried out repairs and painted two spaces in the community hall. We're planning to assist with renovating other areas in the community hall in 2025.



Little Libraries

We're looking at locations for little libraries in Ealing and other areas.



Ongoing activities in your local area

Carr Road alleyway

We'll continue to assist with some clearance in the Carr Road alleyway. We'll keep the Carr Road representative updated about this.

Lager Can – Litter Picking

The site guys are out and about in the community litter picking when there is some downtime.

Supporting at local foodbanks

We volunteer at the foodbank once a month, and continue to pick up weekly from Local Sainsburys (excess bakery food from the previous day).

Viking Centre - Foodbank

We have been looking to help Viking Centre - Foodbank with a new fridge, which we have hopefully now sourced.

Beaver Project

In 2024, helped the Ealing Beaver Project team by building the foundation with a short path and installing the electrical fittings for a welfare cabin.



Ealing Foodbanks

Our team continues to support with food collection and volunteering at Northolt Foodbank and Acton Foodbanks. We're also supporting Viking Centre Foodbank with a new fridge.



Community and Business Funds

HS2 is offering two funds that are available to local communities and businesses between the West Midlands and London, to help with the disruption caused by our construction work. These are the Community and Environment Fund (**CEF**) and the Business and Local Economy Fund (**BLEF**).

The CEF is designed to give communities the opportunity to share in the benefits of HS2. It is an allocated fund that communities are able to apply for, to help to support local projects that aim to improve their local area.

The BLEF is designed to support local economies that may be disrupted by the construction of HS2. BLEF grants are for local business support organisations and local authorities to help maintain business activity in local communities.

For more information about each of these funds, including how to apply, please visit: www.groundwork.org.uk/grants_hs2-funds/



Thank you for attending this resident update meeting.

Please use your phone camera to scan this QR code to complete quick feedback form

