

SKANSKA



**STRABAG**

Working in  
partnership with

**HS2**

---

# Mandeville Road Vent Shaft

Quarterly meeting, 9 June 2025

# What we will cover

1

Housekeeping

2

Update about questions and comments during the previous quarterly meeting

3

Current and upcoming works at Mandeville Road

4

Tunnelling update

5

Engagement update

6

Any other business

# Responding to questions from our last meeting

Last quarterly meeting: 10 March 2025

You asked	Our response
Can the branded lighting on the tower crane be turned off?	Concerns about this were follow up immediately after our last meeting. The branded lighting was turned off following discussions with our subcontractor.
Who owns the access road into the Mandeville Road site when HS2 works are completed?	The access road will be shared between HS2 and Affinity Water.
Can the hedge previous located along the boundary with Carr Road be replanted at the end of works?	Photos shared with us following our last quarterly meeting have been shared with our Design team.  To provide more information and answer any questions about the future landscaping plan for our Mandeville Road site, we are holding drop-in on 21 July 2025.
Can screening be installed in the tower crane cabin to ensure privacy for residents?	It is not possible for screening to be installed in the crane cabin, for safety reasons. The crane operator must have full visibility of works on site while in the crane cabin.
When will the Carr Road footbridge reopen?	Network Rail have confirmed that they are continuing to monitor the bridge and hope to reopen it later this year. Please contact Network Rail directly with any further questions about the footbridge.
Can the signage on Mandeville Road be turned around when it's not in use for site access? Can the barriers and signage behind the bus stop be moved to the TfL yard?	We have reminded our traffic marshals to turn the signage around when it is not in use. The barriers and signage need to remain in their current location for quick access to support vehicle movements to and from the site.
Can the signage further down Mandeville Road on the drop-kerb be checked to avoid blocking visibility for pedestrians?	Our traffic management team will monitor the signage in the area to ensure that it is not blocking visibility. Please contact the Helpdesk straight away if you have any concern about the placement of signage in the area.
Can SCSJV do anything about the flooding at the bus stop?	Any concerns about flooding at the bus stop should be reported to Ealing Council.

**If you have a question about HS2 or our works, please contact our HS2 Helpdesk team on 08081 434 434 or email [hs2enquiries@hs2.org.uk](mailto:hs2enquiries@hs2.org.uk). Your concerns will be logged and a reference number will be provided to you. Our local engagement team will respond to you.**

# Mandeville Road site

Site progress in spring 2025



Lower level of reinforced concrete headhouse walls



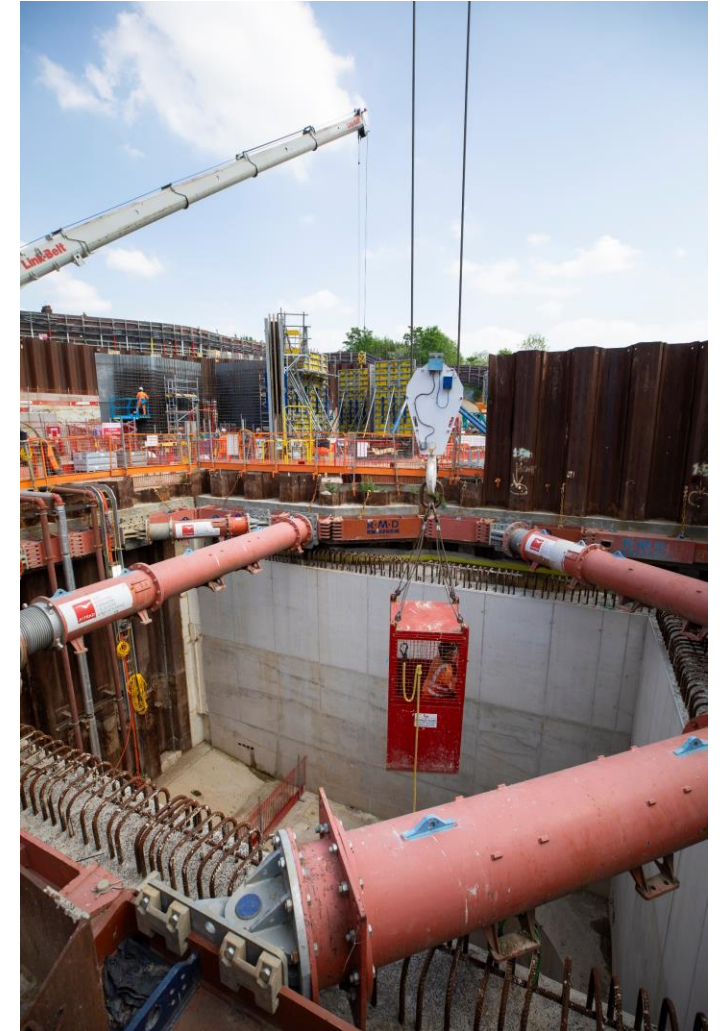
Aerial view showing ventilation basement and some headhouse walls



Upper level of reinforced concrete headhouse walls



Reinforced concrete walls and slabs below ground within main shaft



Reinforced concrete ventilation basement above satellite shaft

# Mandeville Road site

Works planned from June to September 2025\*

Internal works in the shafts including basement ventilation	Works to build headhouse base slab	Installation of reinforced concrete walls for the headhouse
Works in railway embankment including piling	General site maintenance and security	Deliveries

**24/5 works from 16 June to 19 September**

We'll be working 24 hours a day, Mondays to Fridays to connect the main shaft to the tunnel below.

The works will include coring into concrete and wire cutting below ground and removal of concrete blocks from the shaft using a crane.

The blocks will be lifted from the shaft to the surface overnight when there are no other works taking place on site, for safety reasons. Concrete breaking will take place during daytime working hours only (8am to 6pm).

\*The dates for these works remain subject to change.

**Please contact the HS2 Helpdesk if you have any questions or concerns about our works. You'll receive a reference number and our local engagement team will follow up with you.**

# Mandeville Road site

## Summary of works planned from autumn 2025 to autumn 2026\*

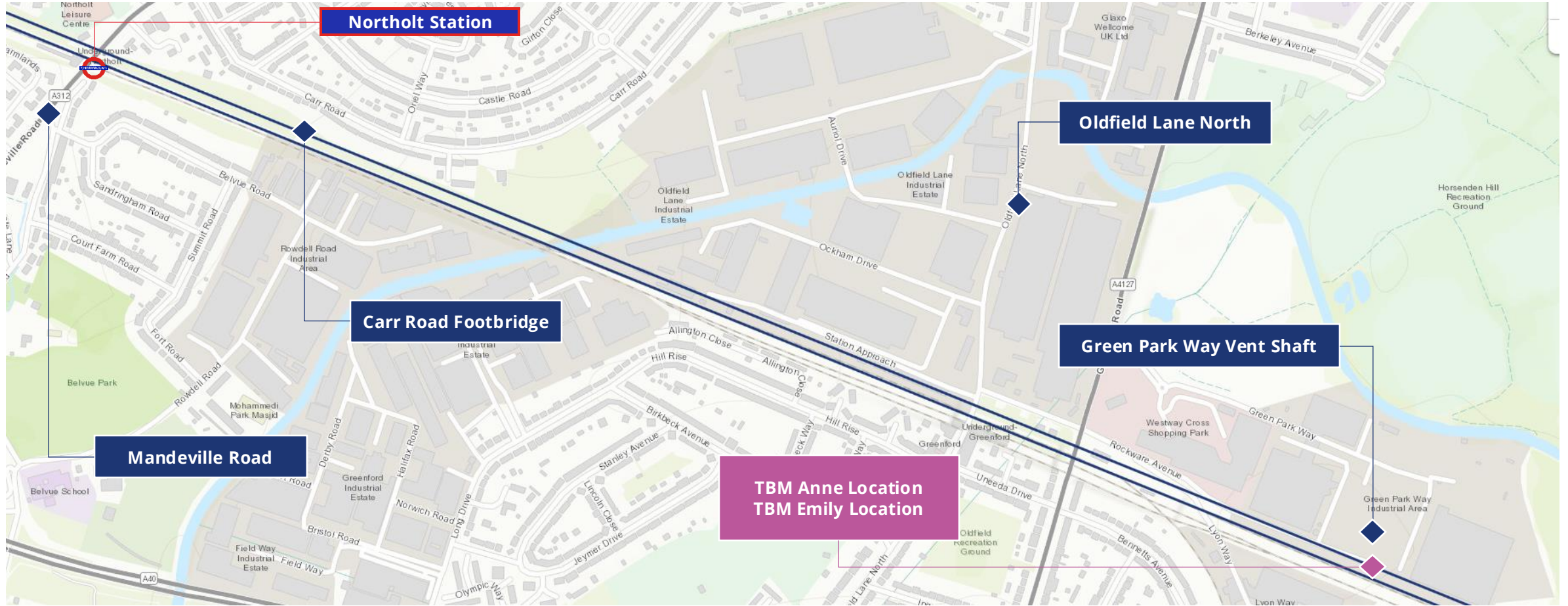
Internal works in the shafts	Operation of two tower cranes	Works to connect the shafts to the tunnels	Works to build the headhouse including concrete walls, steel frame and retaining walls	Installation of mechanical, electrical and plumbing in the headhouse
Installation of a high voltage power cable – Mandeville Road / Badminton Close	Installation and operation of secondary vehicle access via Badminton Close (subject to consents and approvals)	Piling works in the railway embankment	Installation of utility services and connections in the existing site entrance and access road	Ground works and landscaping within the site boundary

\*The dates for these works remain subject to change.



# Tunnelling update

The tunnel boring machines (TBMs) building Northolt Tunnel West have completed their journey. The TBMs building Northolt Tunnel East have arrived at Green Park Way vent shaft. They will be removed from the vent shaft in summer 2025.



You can view the current progress of our TBMs at [www.hs2.org.uk/in-your-area/in-your-area-map](http://www.hs2.org.uk/in-your-area/in-your-area-map) (apply 'tunnelling progress' filter map layer) or scan the QR code to the right with your smart phone.



# Upcoming engagement

## Site visit – 30 June

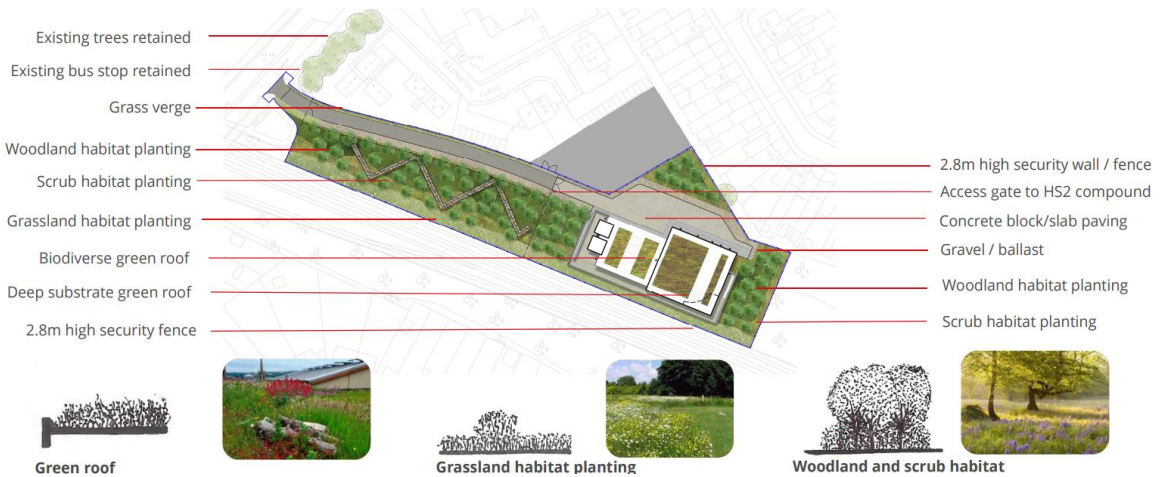
We're holding a site visit for local community on **Monday 30 June at 6pm** to see behind the hoardings.

We'll be sending an invite to the wider community this week with details about how to register. Spaces are limited so please register early.



## Drop-in (landscaping) – 21 July

To provide more information about our future landscaping plans, we're planning a drop-in session on **Monday 21 July** with our landscaping specialists. We'll write to you shortly with more information about this.





# Engagement lookahead 2025

## Quarterly resident meetings

Our next quarterly resident meetings are planned on:

- 8 September
- 8 December

We'll write to you with more information about these meetings.

## Keeping you informed

We'll keep you informed about our works.

You can sign up for email alerts and view the latest updates at [www.hs2.org.uk/brent-and-ealing](http://www.hs2.org.uk/brent-and-ealing) or scan the QR code below with your smart phone camera.



## In the community

Our local engagement team are out and about in your local area during the week.

Please let us know if you'd like to speak with us in person, via phone or email. We are happy to arrange a time to meet or speak with you.

## Contact us

If you have any concerns or questions about our works, please contact the Helpdesk at the time of your concern.

You'll be provided with a reference number and your concerns will be raised with our site team.

### Freephone:

08081 434 434

### Minicom:

08081 456 472

### Email:

[HS2enquiries@hs2.org.uk](mailto:HS2enquiries@hs2.org.uk)

### Webform:

Complete this online [here](#)

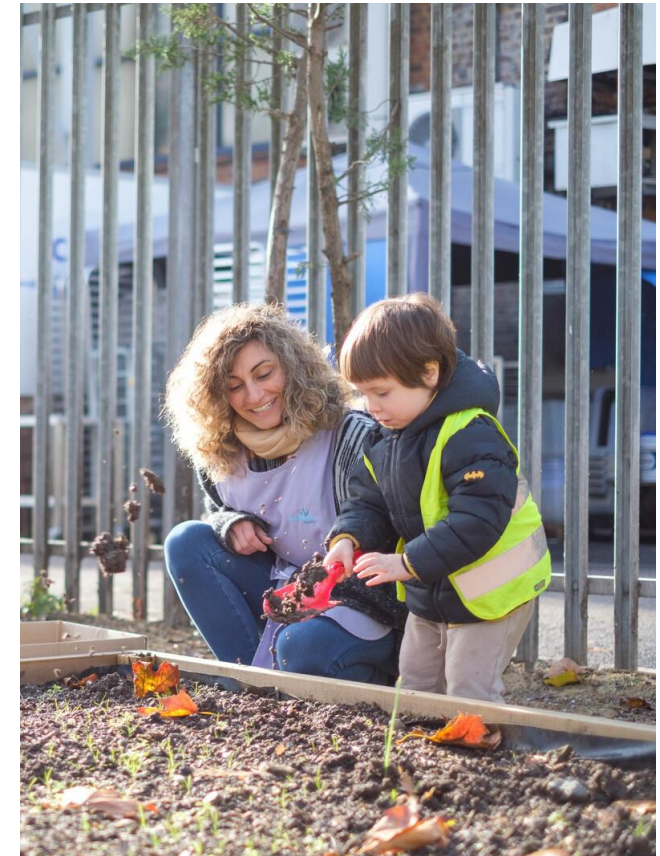
# Community and Business Funds

HS2 is offering two funds that are available to local communities and businesses between the West Midlands and London, to help with the disruption caused by our construction work. These are the Community and Environment Fund (**CEF**) and the Business and Local Economy Fund (**BLEF**).

The CEF is designed to give communities the opportunity to share in the benefits of HS2. It is an allocated fund that communities are able to apply for, to help to support local projects that aim to improve their local area.

The BLEF is designed to support local economies that may be disrupted by the construction of HS2. BLEF grants are for local business support organisations and local authorities to help maintain business activity in local communities.

For more information about each of these funds, including how to apply, please visit: [www.groundwork.org.uk/grants\\_hs2-funds/](http://www.groundwork.org.uk/grants_hs2-funds/)



# HS2

## Thank you for attending

Our next meeting is planned for September 2025.

Please use your phone camera to scan this QR code to complete quick feedback form



Find out more online:  
**[www.hs2.org.uk](http://www.hs2.org.uk)**

Follow our progress on social media



**@HS2Ltd**



**/HS2Ltd**






**@HS2Ltd**



Note: this slide was previously included in the slides for the quarterly meeting held in June 2024. It has been added here for information following discussion in the meeting on 9 June 2025.

# Measures to minimise disruption

We will continue to assess our working methods to ensure we maintain good working practices and minimise disruption to you.

Type of disruption	Measures in place
Noise 	Noise monitors located around site and vicinity to ensure that we keep to agreed levels  Acoustic barriers used where possible
Dust 	Dust monitors located around site and vicinity to ensure that we keep to agreed levels
Vibration 	Vibration monitors located around site and vicinity to ensure that we keep to agreed levels
Site lighting	Lighting is required on site for security and safety reasons. During the winter months, we will require more lighting on site to ensure our works are carried out safely



Note: this slide was previously included in the slides for the quarterly meeting held in June 2024. It has been added here for information following discussion in the meeting on 9 June 2025.

# Monthly reporting

SCSJV reports the data from our noise, vibration and air quality monitoring monthly for each local authority area.

The report includes:

- Summary of works at each site
- Summary of exceedance of trigger levels with a summary of the investigation results and action taken
- Summary of related complaints with results of action taken
- Analysis of the monitoring data to compare the measured noise and vibration levels against predicted levels and standard set impact assessment levels.

The monthly reports are published online and can be accessed by local communities.

## How to access the reports

You can visit the **HS2 managing impacts of construction webpage** at [www.hs2.org.uk/in-your-area/managing-impacts-of-construction/](http://www.hs2.org.uk/in-your-area/managing-impacts-of-construction/)

Visit the **UK Government Monitoring the environmental effects of HS2** at [www.gov.uk/government/publications/monitoring-the-environmental-effects-of-hs2](http://www.gov.uk/government/publications/monitoring-the-environmental-effects-of-hs2))

You will see the tabs and options below to click on:



### Air quality

We're minimising emissions while designing and constructing HS2.



### Construction noise and vibration

We're designing and building HS2 in ways that reduce noise and vibration from our construction works.



### Monitoring the environmental effects of HS2: 2024

<https://www.gov.uk/government/collections/monitoring-the-environmental-effects-of-hs2-2024>

#### Monthly noise and vibration reports

[Monitoring Noise and Vibration on the HS2 Phase One and 2a route \(January 2024\)](#)  
15 April 2024 Impact assessment

[Monitoring noise and vibration on the HS2 Phase One and 2a route \(February 2024\)](#)  
26 April 2024 Impact assessment

[Monitoring noise and vibration on the HS2 Phase One and 2a route \(March 2024\)](#)  
15 May 2024 Impact assessment

#### Monthly air quality and dust reports

[Monitoring air quality and dust on the HS2 Phase One and 2a route \(January 2024\)](#)  
15 April 2024 Impact assessment

[Monitoring air quality and dust on the HS2 Phase One and 2a route \(February 2024\)](#)  
26 April 2024 Impact assessment

[Monitoring air quality and dust on the HS2 Phase One and 2a route \(March 2024\)](#)  
15 May 2024 Impact assessment