



# Updated notice of Public Rights of Way closures, North Chilterns Area

May 2025 | [www.hs2.org.uk](http://www.hs2.org.uk)

High Speed Two (HS2) is the new high speed railway for Britain. If you have any questions or enquiries about our work, please contact our Helpdesk to find out more. You can sign up for regular updates in your local area at [www.hs2inyourarea.co.uk](http://www.hs2inyourarea.co.uk).

## What are we doing?

As part of our continuing works and for the safety of the public, we are continuing the closures of some footpaths adjacent to our work sites in the North Chilterns area. This includes the areas located in Ellesborough, Nash Lee, Wendover and The Lee.

Public Right of Way (PRoW) closures are in place to allow us to safely use our internal haul road and to continue to build the HS2 line itself. PRoWs which are located close to or that cross the construction sites, will remain closed with diversions where possible.

There are several points where you can cross over the HS2 railway, which can be seen on the maps below. These include crossings on Nash Lee Road, Ellesborough Road, and Bowood Lane.

## When will these works takes place?

Affected footpaths have physical closure notices for pedestrian users and, where possible, signposted local diversions remain in place.

These will remain under closure until the structures are completed and we can safely re-open them to the public, which we anticipate will be between 2027 and 2028.

**If you have a question about HS2 or our works, please contact our HS2 Helpdesk team on 08081 434 434 or email [hs2enquiries@hs2.org.uk](mailto:hs2enquiries@hs2.org.uk)**

## Duration of works

PRoW closures to continue until 2027-2028.

## What to expect

Localised footpath closures and diversions will be in place and sign posted where possible.

## What we will do

Manage any environmental impacts, such as traffic and noise.

Minimise disruption as much as possible for the local community.

Provide clear signage on the ground for PRoW users.

# Updated notice of Public Rights of Way closures, North Chilterns Area

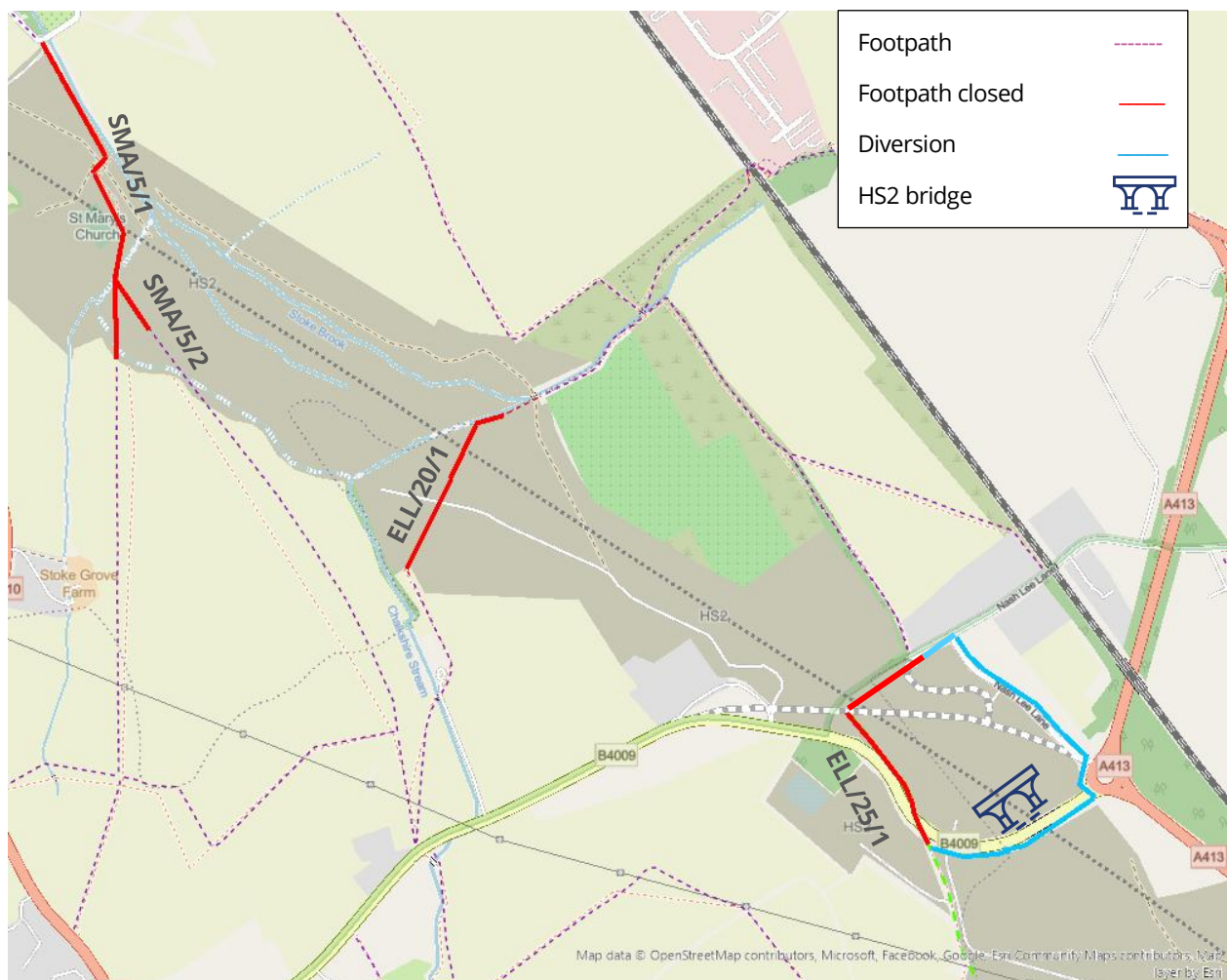
[www.hs2.org.uk](http://www.hs2.org.uk)

Notification



## Ellesborough and Nash Lee

Footpaths also known as Public Rights of Way or PRoWs, that will remain closed in the Ellesborough and Nash Lee area are **SMA/5/1**, **SMA/5/2**, **ELL/25/1** and **ELL/20/1**. This is to support the construction of the ELL/20 footbridge and the Nash Lee overbridge until mid-2027.



Contact our HS2 Helpdesk team on **08081 434 434**

# Updated notice of Public Rights of Way closures, North Chilterns Area

[www.hs2.org.uk](http://www.hs2.org.uk)

Notification



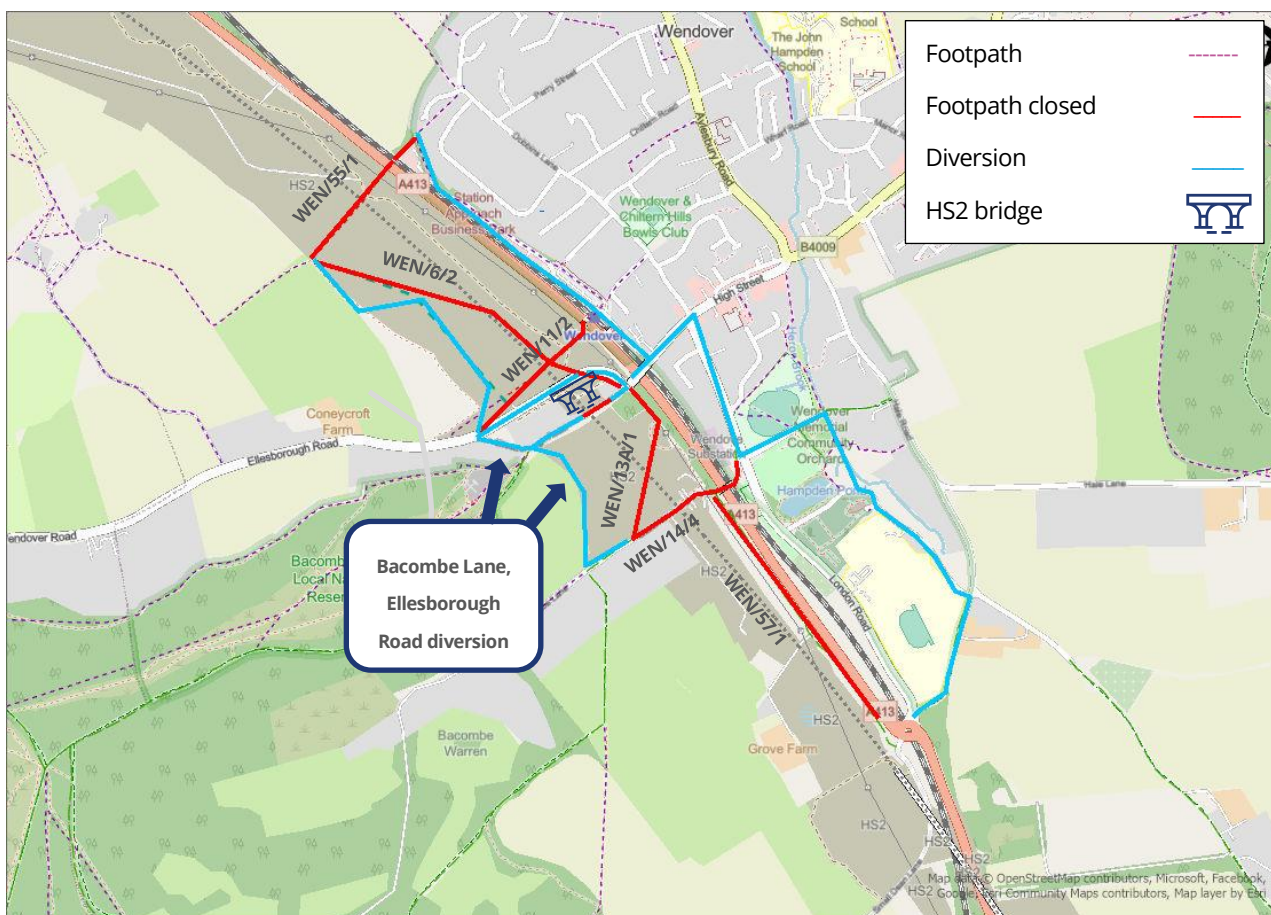
## Wendover

In the Wendover area Ellesborough Road, Bacombe Lane, and Small Dean Lane will be diverted until 2028. These roads have been diverted to enable construction at our Small Dean Lane site and the Wendover green tunnel.

**WEN/57/1** will be closed to support construction at the Small Dean Lane site.

The following PRoWs will be closed to enable Wendover green tunnel construction until 2028:

**WEN/55, WEN/6/2, WEN/11/2, WEN/13A/1, WEN/14/4**



Contact our HS2 Helpdesk team on **08081 434 434**

# Updated notice of Public Rights of Way closures, North Chilterns Area

[www.hs2.org.uk](http://www.hs2.org.uk)

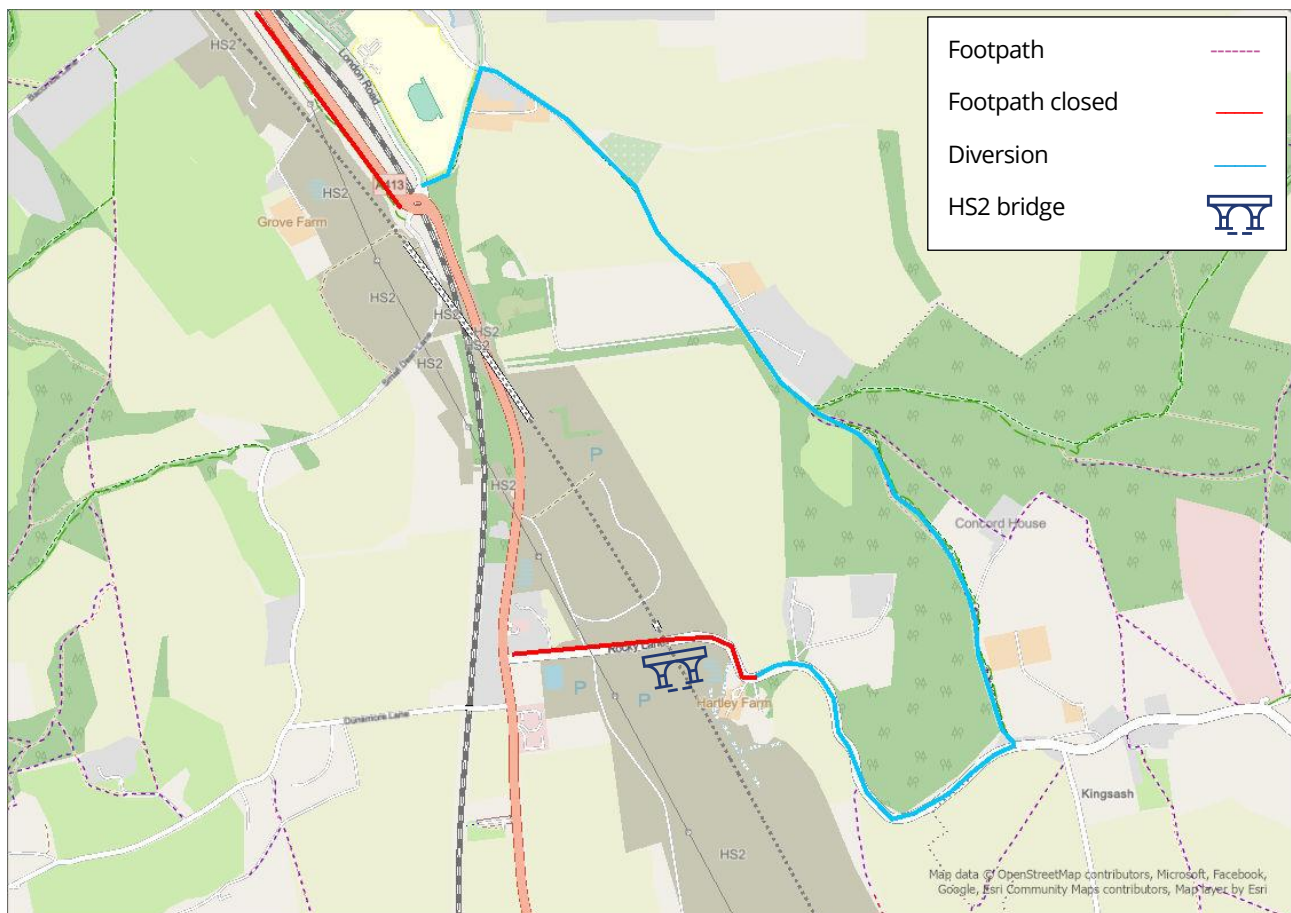
Notification



## Rocky Lane

Since February 2025, Rocky Lane has been closed to allow the construction of the Rocky Lane underbridge and permanent realignment to continue safely.

The map below highlights the footpath diversion for the duration of the Rocky Lane closure. The road will be closed until August 2025.



Contact our HS2 Helpdesk team on **08081 434 434**



# Notice of Public Rights of Way closures, North Chilterns Area

Notification



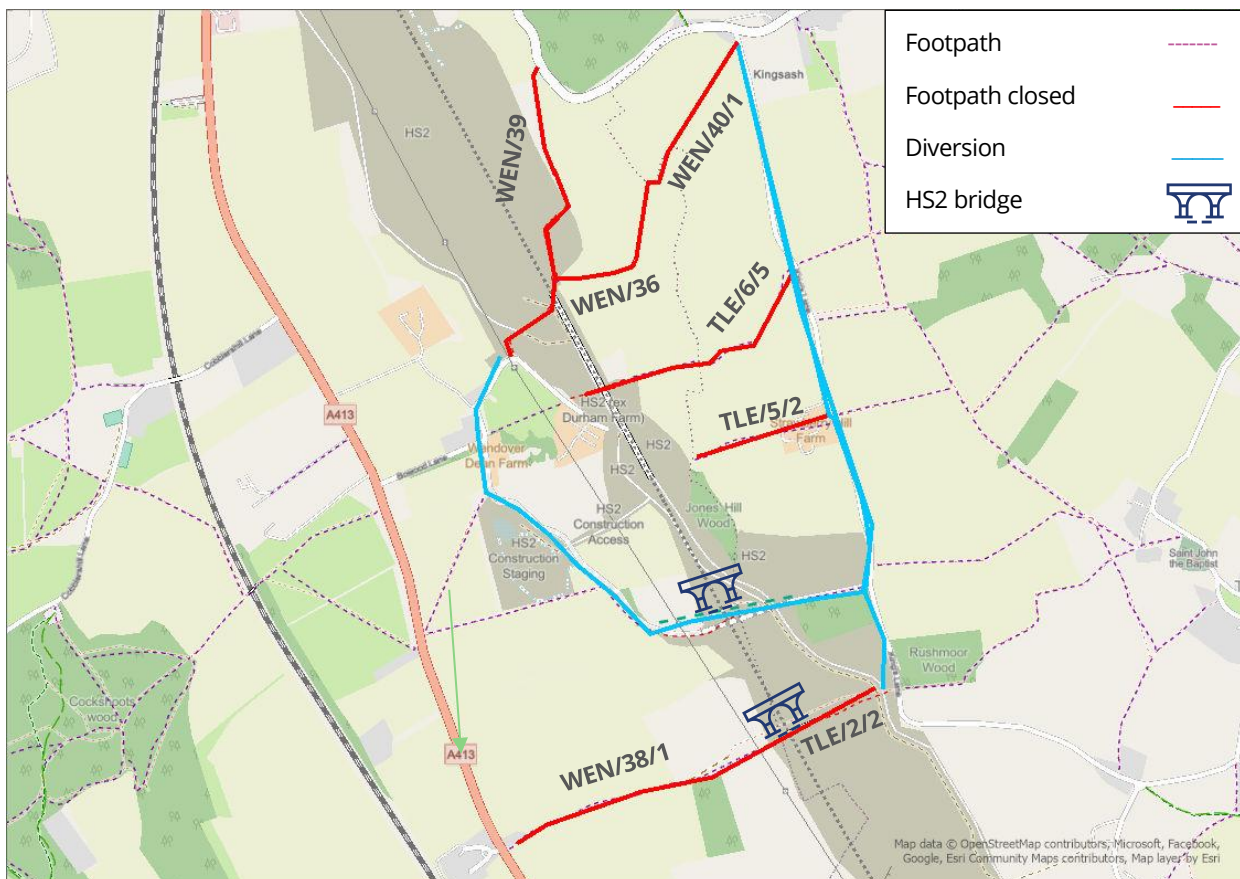
[www.hs2.org.uk](http://www.hs2.org.uk)

## South of Wendover and The Lee

The footpaths closed in the area South of Wendover and The Lee are **WEN/36**, **WEN/38/1** and **TLE/2/2**, **WEN/39** and **WEN/40/1**, **TLE/6/5** and **TLE/5/2**. We are currently constructing several structures in this area, including Wendover Dean Viaduct, Bowood Lane overbridge, and TLE/2 overbridge.

These footpaths are expected to re-open in mid-2027.

As of April 2025, Bowood Lane overbridge is open for pedestrian use.



Contact our HS2 Helpdesk team on **08081 434 434**

# Keeping you informed

We are committed to keeping you informed about work on HS2. This includes ensuring you know what to expect and when to expect it, as well as how we can help you.

## The Residents' Commissioner

The independent Residents' Commissioner oversees and monitors our commitments to you.

The commissioner's reports and our responses can be found at [www.gov.uk/government/collections/hs2-ltd-residents-commissioner](http://www.gov.uk/government/collections/hs2-ltd-residents-commissioner)

The Residents' Commissioner makes sure we fulfil the commitments in the HS2 Community Engagement Strategy (<https://bit.ly/3oOA25j>).

The Residents' Commissioner can be contacted on: [residentscommissioner@hs2.org.uk](mailto:residentscommissioner@hs2.org.uk)

## Construction Commissioner

The independent Construction Commissioner regularly meets our Chief Executive Officer to raise any concerns or emerging trends across HS2.

The Construction Commissioner's role has been developed to monitor the way we manage and respond to construction complaints.

The commissioner mediates on disputes about construction, involving individuals and organisations, that we can't resolve. The commissioner advises members of the public about how to make a complaint about construction.

The Construction Commissioner can be contacted on: [complaints@hs2-cc.org.uk](mailto:complaints@hs2-cc.org.uk)

## Property and compensation

You can find out about HS2 and properties along the route by visiting:

[www.gov.uk/government/collections/hs2-property](http://www.gov.uk/government/collections/hs2-property)

Find out if you can claim compensation at:

[www.gov.uk/claim-compensation-if-affected-by-hs2](http://www.gov.uk/claim-compensation-if-affected-by-hs2)

## Holding us to account

If you are unhappy for any reason you can make a complaint by contacting the HS2 Helpdesk. For more details on our complaints process, please visit:

[www.hs2.org.uk/in-your-area/contact-us/how-to-complain/](http://www.hs2.org.uk/in-your-area/contact-us/how-to-complain/)

**Reference number: HS2-EKFB-25-1026**

High Speed Two (HS2) Limited, registered in England and Wales.


Registered office: Two Snowhill, Snow Hill Queensway, Birmingham B4 6GA.

Company registration number: 06791686. VAT registration number: 888 8512 56

## Contact us

Contact our HS2 Helpdesk team all day, every day of the year on:

 Freephone **08081 434 434**

 Minicom **08081 456 472**

 Email **HS2enquiries@hs2.org.uk**

Write to:

**FREEPOST**

**HS2 Community Engagement**

Website **[www.hs2.org.uk](http://www.hs2.org.uk)**

To keep up to date with what is happening in your local area, visit:  
**[www.HS2inyourarea.co.uk](http://www.HS2inyourarea.co.uk)**

**Please contact us if you'd like a free copy of this document in large print, Braille, audio or 'easy read' format. You can also contact us for help and information in a different language.**

HS2 Ltd is committed to protecting personal information. If you wish to know more about how we use your personal information please see our Privacy Notice:

<https://www.gov.uk/government/publications/high-speed-two-ltd-privacy-notice>