



Notice of weekend road closure, A423, Southam

April 2025 | www.hs2.org.uk

High Speed Two (HS2) is the new high speed railway for Britain. If you have any questions or enquiries about our work, please contact our Helpdesk to find out more. You can sign up for regular updates in your local area at www.hs2inwarwickshire.co.uk.

What are we doing?

EKFB are preparing for the permanent realignment of the A423 Banbury Road, joining the new bridge we are building over the HS2 railway line to the current road network.

As we continue this work, we will be extending the width of the plant crossing over the A423. This will allow larger earth moving vehicles to begin to build the approach roads to the new bridge this coming summer. This will require a full weekend road closure followed by single lane traffic management for up to two weeks.

When will these works take place?

Weekend road closure: From 8pm Friday 9 May to 6am Monday 12 May 2025, 24 hours a day.

Single lane traffic lights: Monday 12 May to Friday 23 May 2025, 24 hours a day.

These dates may be subject to change, due to circumstances outside of our control, such as poor weather. This work is subject to local authority consents and approvals.

If you have a question about HS2 or our works, please contact our HS2 Helpdesk team on 08081 434 434 or email hs2enquiries@hs2.org.uk

Duration of works

A section of the A423 will be closed from 8pm on Friday 9 May to 6am on Monday 12 May 2025. 24 hours a day.

Followed by up to two week of single lane traffic lights.

Working Hours:

Friday: 8pm to 10pm

Saturday and Sunday: 8am to 7pm

Our contractors may be on site for one hour's start-up and shutdown either side of these times.

What to expect

Road closure on a section of the A423.

Traffic Management in place for up to two weeks.

What we will do

Respond promptly to any complaints and take appropriate action.

Take care to respect the community.

Notice of weekend road closure, A423, Southam

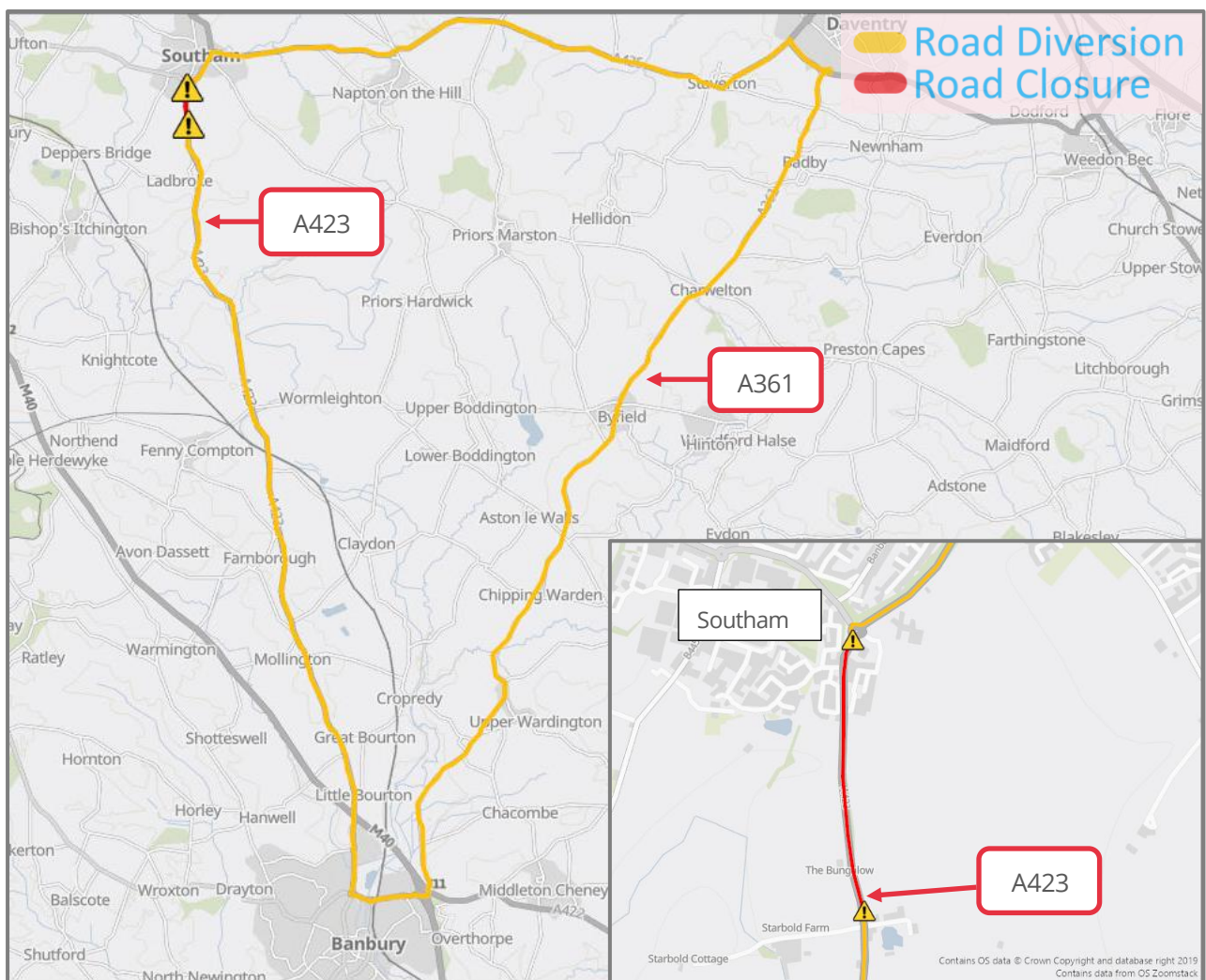
Notification



www.hs2.org.uk

Where will the works take place?

A section of the A423 Banbury Road between Ladbrooke and Southam will be closed. Access will be maintained for residential properties within the closure area, including properties on Starbold Farm.



Southam Community Event

Wednesday 21 May, 11am – 2pm

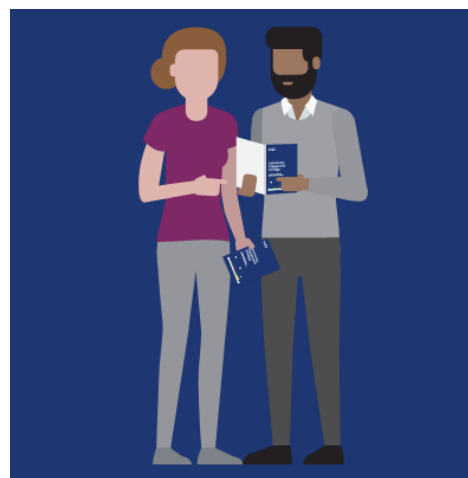
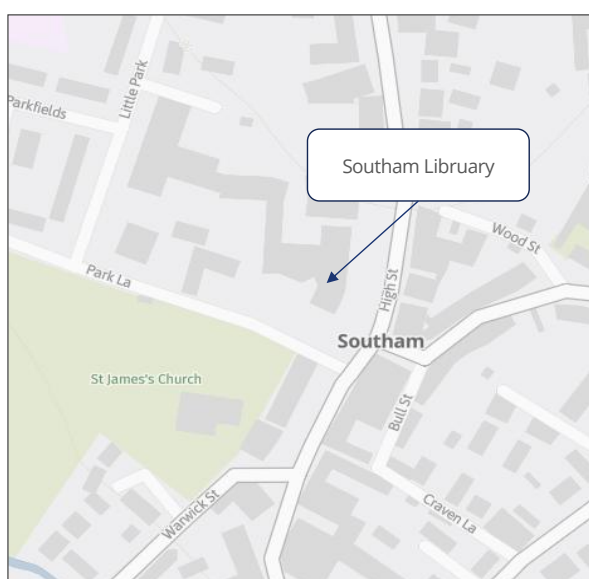
High Speed Two (HS2) is the new high speed railway for Britain.

We're visiting your area soon. This is your chance to:

- **Meet your local engagement team**
- **Learn more about the construction happening nearby**
- **Discuss how we can support local community projects**

Find us outside the Southam Library, Tythe Place, High Sreet, Southam CV47 0HB

We look forward to meeting you.



Contact Us

Contact our HS2 Helpdesk team all day, every day of the year on:

Freephone **08081 434 434**

Minicom **08081 456 472**

Email **hs2enquiries@hs2.org.uk**

Write to:

**FREEPOST
HS2 Community Engagement**

Website **www.hs2.org.uk**

To keep up to date with what is happening in your local area, visit:

www.hs2inyourarea.co.uk



Keeping you informed

We are committed to keeping you informed about work on HS2. This includes ensuring you know what to expect and when to expect it, as well as how we can help.

Residents' Charter and Commissioner

The Residents' Charter is our promise to communicate as clearly as we possibly can with people who live along or near the HS2 route.
www.gov.uk/government/publications/hs2-residents-charter

We also have an independent Residents' Commissioner whose job is to make sure we keep to the promises we make in the Charter and to keep it under constant review. Find reports at:
www.gov.uk/government/collections/hs2-ltd-residents-commissioner

You can contact the Commissioner at:
residentscommissioner@hs2.org.uk

Construction Commissioner

The Construction Commissioner's role is to mediate and monitor the way in which HS2 Ltd manages and responds to construction complaints. You can contact the Construction Commissioner by emailing:
complaints@hs2-cc.org.uk

Property and compensation

You can find out all about HS2 and properties along the line of route by visiting:
www.gov.uk/government/collections/hs2-property
Find out if you're eligible for compensation at:
www.gov.uk/claim-compensation-if-affected-by-hs2

Holding us to account

If you are unhappy for any reason you can make a complaint by contacting our HS2 Helpdesk team. For more details on our complaints process, please visit our website:
www.hs2.org.uk/how-to-complain

Contact Us

Contact our HS2 Helpdesk team all day, every day of the year on:

 Freephone **08081 434 434**

 Minicom **08081 456 472**

 Email **hs2enquiries@hs2.org.uk**

Write to:

FREEPOST

HS2 Community Engagement

Website **www.hs2.org.uk**

To keep up to date with what is happening in your local area, visit:
www.hs2inyourarea.co.uk

Please contact us if you'd like a free copy of this document in large print, Braille, audio or easy read. You can also contact us for help and information in a different language.

HS2 Ltd is committed to protecting personal information. If you wish to know more about how we use your personal information please see our Privacy Notice
<https://www.gov.uk/government/publications/high-speed-two-ltd-privacy-notice>

Reference number: HS2-EKFB-25-1031

High Speed Two (HS2) Limited, registered in England and Wales.
Registered office: Two Snowhill, Snow Hill Queensway, Birmingham B4 6GA.
Company registration number: 06791686. VAT registration number: 888 8512 56.