

SKANSKA



STRABAG

Working in
partnership with

HS2

South Hampstead Utility Works

Gas Diversion Works - May 2025

Delivering HS2 London Tunnels

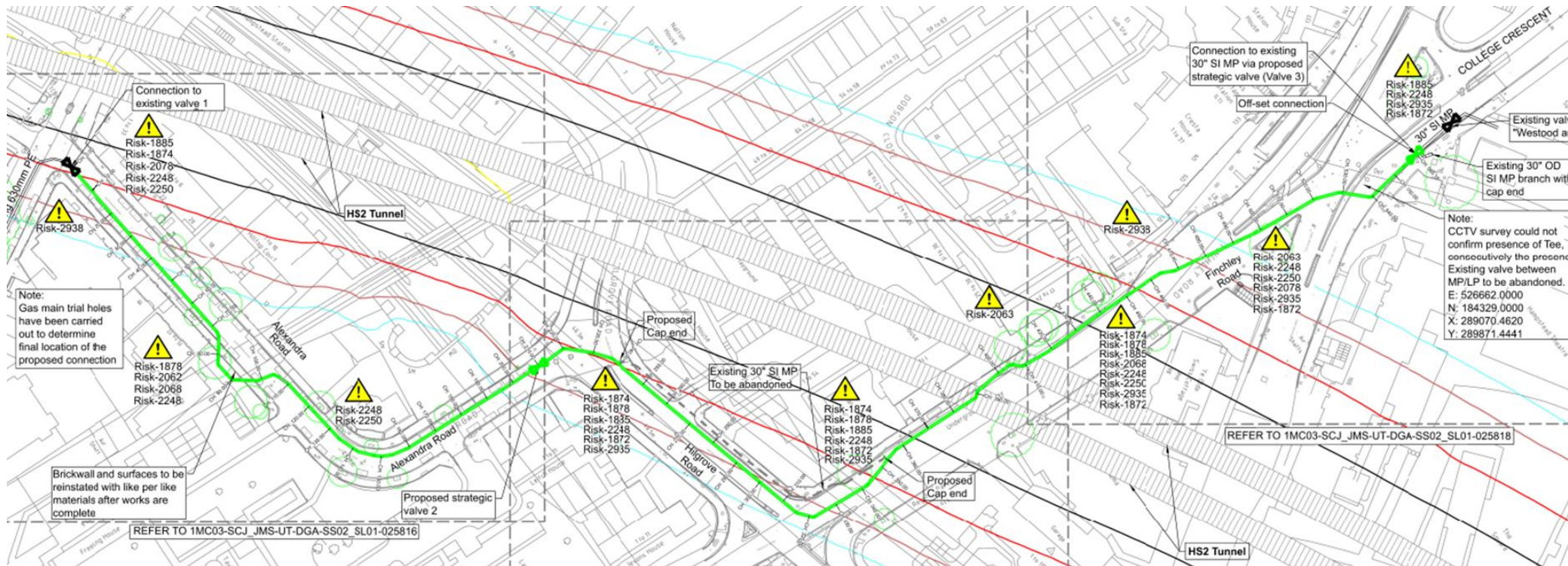
Skanska Costain STRABAG Joint Venture (SCSJV) are working in partnership with HS2 Ltd to build 16.4 miles (26.4 kilometres) of the high-speed railway between Euston and West Ruislip.

This includes 13 miles (21 kilometres) of tunnels and the associated ventilation (vent) shafts and headhouses to provide access to the tunnels for maintenance and emergency services, ventilation and power supply.



Utility works in South Hampstead

We will be carrying out works to protect the gas main before tunnelling for HS2 starts in the area. These works will take place in six phases between 21 July 2025 and 17 July 2026 on Finchley Road, College Crescent, Hilgrove Road and Alexandra Road.



*Dates mentioned are subject to change, we will provide updates at hs2.org.uk/in-your-area/

Phase one

21 July to 21 September 2025

Key:

- Work area 
- Diversion route 
- Tube station 
- Suspended bus stop 
- Alternative bus stop 



There will be a lane closure on College Crescent with one way traffic only. Bus stops F and G will be suspended.

There will be a road closure on Alexandra Road. Residents can access to Alexandra Road via Hilgrove Road.

Traffic diversions will be in place as indicated in green.

Phase two

22 September to 30 November 2025

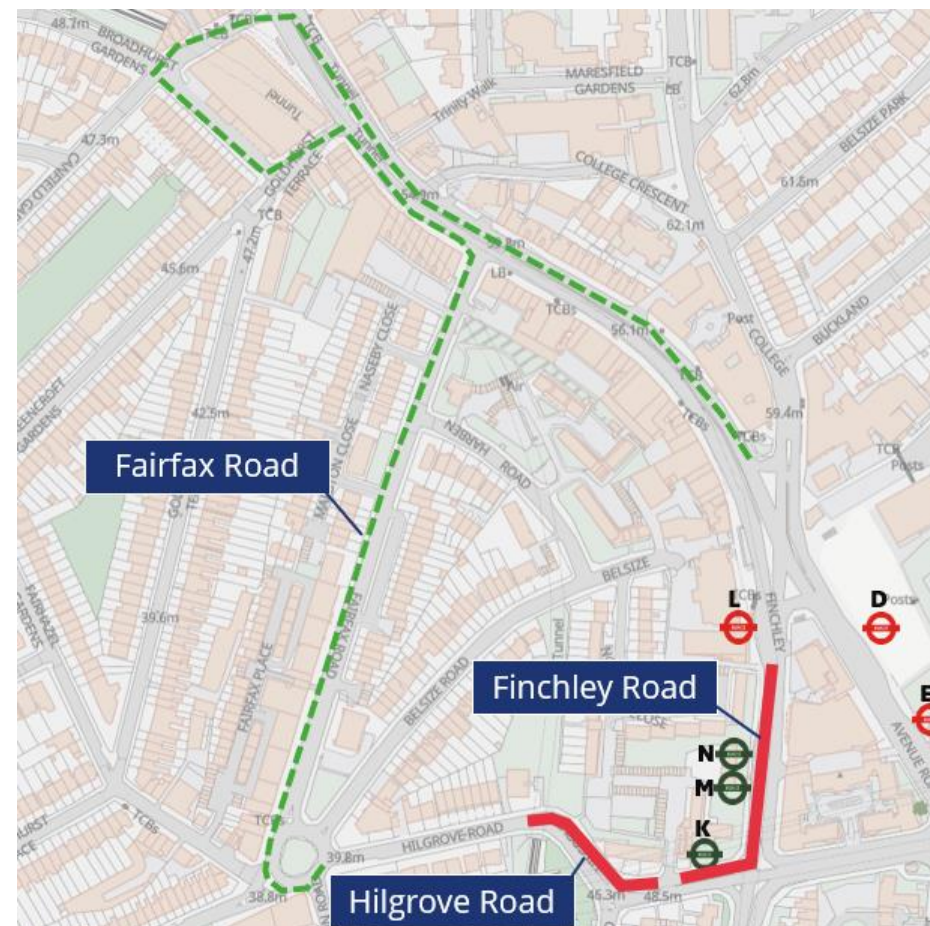
There will be lane closures on Hilgrove Road and Finchley Road, with temporary traffic lights.

Bus stop K on Finchley Road and bus stops M and N at Swiss Cottage Station will be suspended.

A traffic diversion will be in place as shown on the map in green.

Key:

- Work area 
- Diversion route 
- Tube station 
- Suspended bus stop 
- Alternative bus stop 



Phase three

1 December 2025 to 1 March 2026





There will be a partial road closure on Alexandra Road. There will be traffic marshals 24/7 with vehicle access for residents and services only.

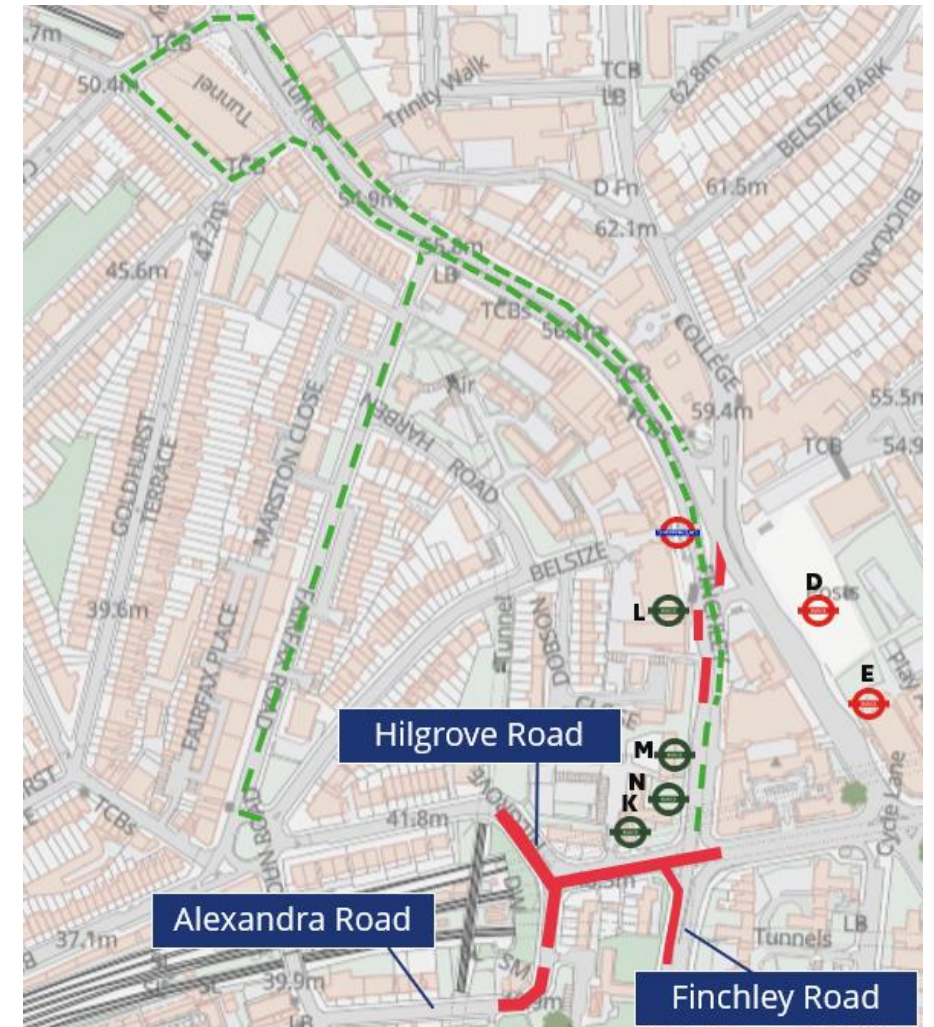
There will be lane closures on Finchley Road and Hilgrove Road with temporary traffic lights.

Bus stop K on Finchley Road and bus stops L, M and N at Swiss Cottage Station will be suspended.

Traffic diversion will be in place.

Key:

- Work area 
- Diversion route 
- Tube station 
- Suspended bus stop 
- Alternative bus stop 



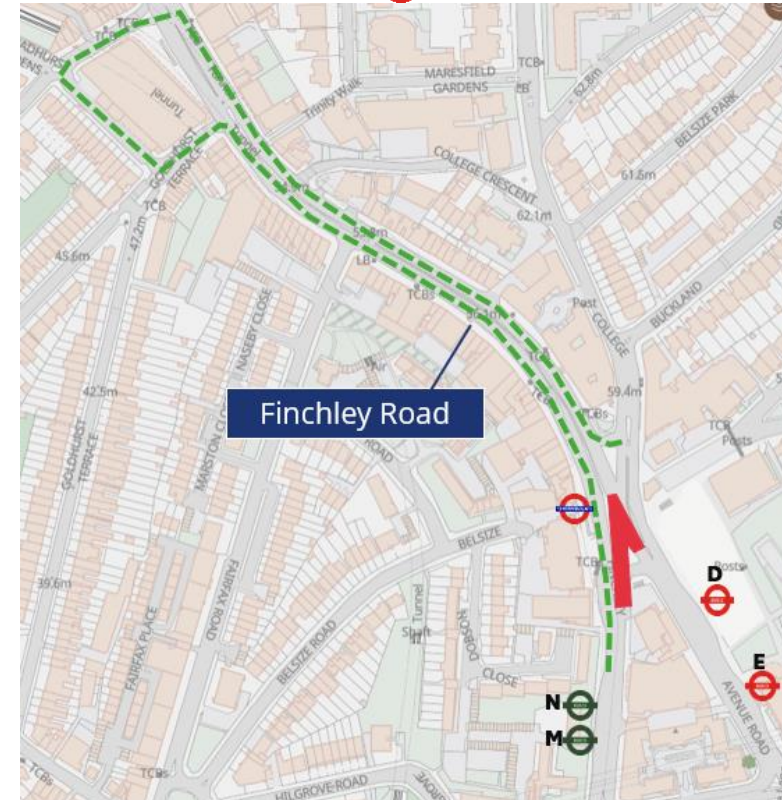
Phase four

2 March to 25 April 2026



Key:

- Work area 
- Diversion route 
- Tube station 
- Suspended bus stop 
- Alternative bus stop 



There will be a lane closure on Finchley Road. Bus stops M and N at Swiss Cottage Station will be suspended.

There will be a partial road closure on Alexandra Road. There will be traffic marshals 24/7 with vehicle access for residents and services only.

Traffic diversions will be in place as shown in green.

Gyratory suspended parking bays

Phases two to four – 22 September 2025 to 25 April 2026

We will suspend ten parking/ loading bays on the Swiss Cottage gyratory in front of the Odeon Cinema.

This is to widen the road and enable the traffic to flow.

The parking bays will be re-instated during phase four.



Phase five

27 April to 7 June 2026



Key:

- Work area
- Diversion route
- Tube station
- Suspended bus stop
- Alternative bus stop



There will be a road closure on Alexandra Road. There will be traffic marshals 24/7 with vehicle access for residents and services only.

There will be lane closures on College Crescent and Finchley Road with temporary traffic lights. Bus stops M and N at Swiss Cottage Station will be suspended.

Traffic diversions will be in place as shown in green.

Phase six

8 June to 17 July 2026

Key:

- Work area 
- Diversion route 
- Tube station 
- Suspended bus stop 
- Alternative bus stop 



There will be a road closure on Alexandra Road. Residents can access Alexandra Road via Hilgrove Road.

There will be a lane closure on College Crescent with one way traffic only. Bus stops F and G will be suspended.

Traffic diversions will be in place as shown in green.

Measures to minimise disruption

Noise and Vibration

You may experience some noise and vibration during concrete breaking and excavation

To minimise disruption we will:

- Use noise reducing barriers around excavation sites
- Use electric machinery where possible

Once excavation is complete, noise will be significantly lower and is not expected to be louder than usual background levels

Lighting

- All lighting will be low level and within the work site focusing away from residential areas

Dust

- To minimise dust, we will damp down using water sprays

Keeping you informed

As part of our commitment to keeping you informed, we will continue to provide regular updates on the progress of construction.

Planned engagement activity	Planned engagement date*
Notifications about our works	Throughout 2025 and 2026
Fortnightly virtual drop-ins each month	<div>Book a 20-minute session to speak with the community engagement team fortnightly on Tuesdays starting from 8 July 2025.</div> <div>You will be able to register from July at HS2.org.uk/events</div>

If you have a question or a concern about any of works in your local area, please contact the Helpdesk on **08081 434 434** or email **HS2enquiries@hs2.org.uk**. Our local engagement team will contact you via phone or email to discuss your question or concerns.



Thank you

