

Boundary wall and drainage work at South Ruislip Vent Shaft, Victoria Road

May 2025 | www.hs2.org.uk

High Speed Two (HS2) is the new high speed railway for Britain.

Update: western boundary wall

We wrote to you in February 2025 with an update about our work to build the permanent western boundary wall at the South Ruislip Vent Shaft site.

We have built the foundations for the wall. From **16 June to 5 September 2025**, we'll install the concrete wall and fencing on the foundations.

On-site drainage works from late-June

From late-June, we will also start work to install drainage within our site boundary. This work will include ground excavation and installation of pipes and manholes.

The drainage works will take place in phases in different areas of the site. We will provide updates about the phases.

How this may affect you

The map on the next page shows the work location for the boundary wall and drainage works.

You may notice an excavator and vibrating plate, a crane and a concrete pump on site during this work.

You may experience some noise and vibration during this work. We will use noise reducing barriers where possible and water sprays to reduce dust. We will monitor noise, dust and vibration levels.

We will ensure that disruption is kept to a minimum and that regular updates are provided.

We apologise for any disruption this work may cause.

If you have a question about HS2 or our works, please contact our HS2 Helpdesk team on 08081 434 434 or email hs2enquiries@hs2.org.uk

Notification



Duration of works

16 June to 5 September 2025

Monday to Friday 8am to 6pm

Saturdays 8am to 1pm if required

We may be on site for an hour before and/or after each shift

What to expect

You may notice large construction machinery and a crane on site during these works

What we will do

Use noise reducing barriers

Use water sprays to reduce dust

Monitor noise, dust and vibration levels

Provide updates at HS2inHillingdon.co.uk

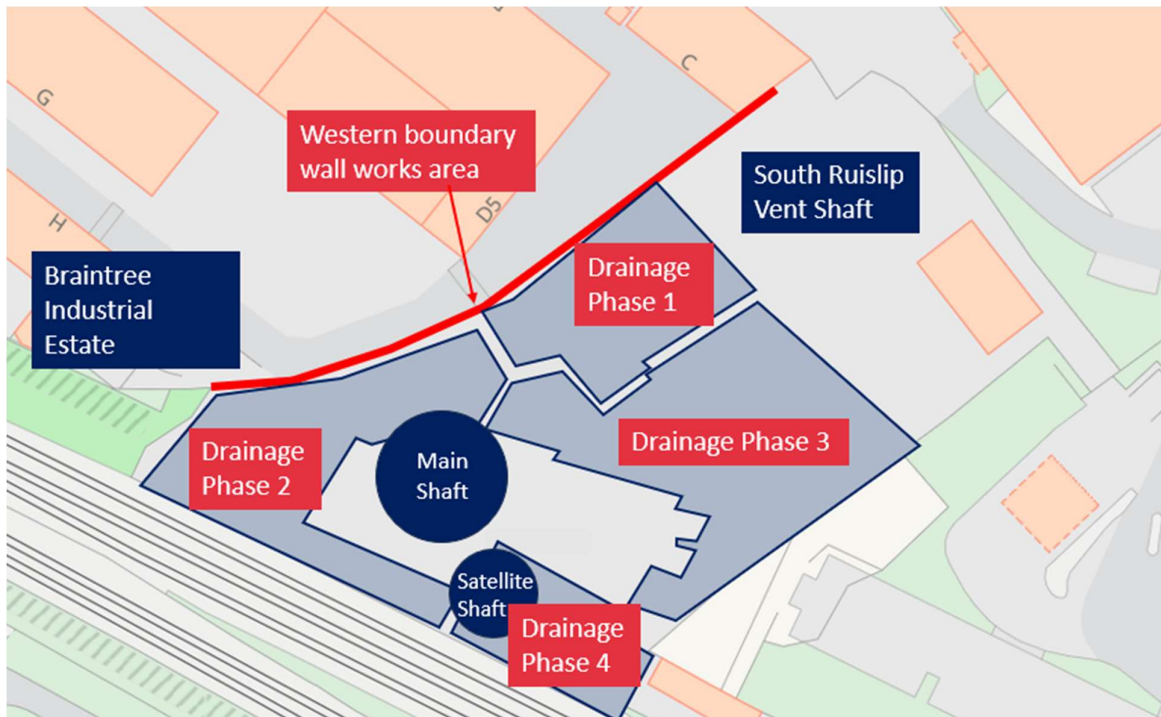
Boundary wall and drainage work at South Ruislip Vent Shaft, Victoria Road

www.hs2.org.uk

Notification



Location of the boundary wall and drainage works



Contact our HS2 Helpdesk team on **08081 434 434**

What else is happening in your area?

www.hs2.org.uk

Contact our new HS2 Helpdesk team

Our new Helpdesk team is based in our Head Office in Birmingham. This is so that we can provide you with the best service possible. Our team is here to listen and respond to your enquiry, complaint or feedback to help us be a good neighbour.

You can contact our Helpdesk team all day, every day of the year on:

Freephone: **08081 434 434**

Minicom: **08081 456 472**

Email: hs2enquiries@hs2.org.uk

Keep up-to-date with your local community website

To find out more about what's happening in your area and receive regular email updates, you can sign up to our local community websites at: www.hs2inyourarea.co.uk.

About our Community and Business Funds

We are offering two funds that are available to local communities and businesses between the West Midlands and London, to help with the disruption caused by our construction work. These are the Community and Environment Fund (CEF) and the Business and Local Economy Fund (BLEF).

The CEF is designed to give communities the opportunity to share in the benefits of HS2. It is an allocated fund that communities are able to apply for, to help to support local projects that aim to improve their local area.

The BLEF is designed to support local economies that may be disrupted by the construction of HS2. BLEF grants are for local business support organisations and local authorities to help maintain business activity in local communities.

For more information about each of these funds, including how to apply, please visit: <https://www.groundwork.org.uk/hs2funds>



Keeping you informed

We are committed to keeping you informed about work on HS2. This includes ensuring you know what to expect and when to expect it, as well as how we can help.

Residents' Charter and Commissioner

The Residents' Charter is our promise to communicate as clearly as we possibly can with people who live along or near the HS2 route. www.gov.uk/government/publications/hs2-residents-charter

We also have an independent Residents' Commissioner whose job is to make sure we keep to the promises we make in the Charter and to keep it under constant review. Find reports at: www.gov.uk/government/collections/hs2-ltd-residents-commissioner

You can contact the Commissioner at: residentscommissioner@hs2.org.uk

Construction Commissioner

The Construction Commissioner's role is to mediate and monitor the way in which HS2 Ltd manages and responds to construction complaints. You can contact the Construction Commissioner by emailing: complaints@hs2-cc.org.uk

Property and compensation

You can find out all about HS2 and properties along the line of route by visiting: www.gov.uk/government/collections/hs2-property
Find out if you're eligible for compensation at: www.gov.uk/claim-compensation-if-affected-by-hs2

Holding us to account

If you are unhappy for any reason you can make a complaint by contacting our HS2 Helpdesk team. For more details on our complaints process, please visit our website: www.hs2.org.uk/how-to-complain

Contact Us

Contact our HS2 Helpdesk team all day, every day of the year on:

 Freephone **08081 434 434**

 Minicom **08081 456 472**

 Email **hs2enquiries@hs2.org.uk**

Write to:

FREEPOST

HS2 Community Engagement

Website **www.hs2.org.uk**

To keep up to date with what is happening in your local area, visit: **www.hs2inyourarea.co.uk**

Please contact us if you'd like a free copy of this document in large print, Braille, audio or easy read. You can also contact us for help and information in a different language.

HS2 Ltd is committed to protecting personal information. If you wish to know more about how we use your personal information please see our Privacy Notice <https://www.gov.uk/government/publications/high-speed-two-ltd-privacy-notice>

Reference number: HS2-EW-SCS-Ph1-Ar-So-S2-Prog-Works-1-19/05/2025

High Speed Two (HS2) Limited, registered in England and Wales.

Registered office: Two Snowhill, Snow Hill Queensway, Birmingham B4 6GA.

Company registration number: 06791686. VAT registration number: 888 8512 56.