

Contact our HS2 Helpdesk team on **08081 434 434**

# HS2 Update

Solihull | Spring 2025

High Speed Two (HS2) is the new high speed railway for Britain. This update will provide you with key information and news on the HS2 works in Solihull.

## A45 Overbridge

The A45 Overbridge will allow the new high-speed railway to pass under the A45 Coventry Road as it approaches the new Interchange station. The Overbridge will span 117 metres across the A45 carriageways and the Eastway and Service Road and include 167 piles.

Construction of the Eastway and Service Road bridges is nearing completion, and the road realignment connections will be made before the new bridges are open to traffic from spring 2025.

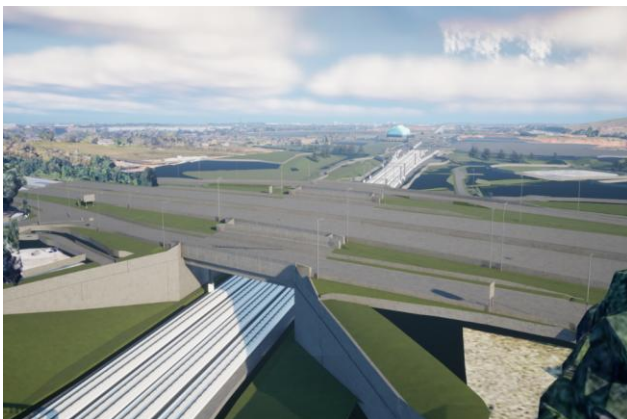
The next phase of works will be to create a safe working area to begin the 'top-down' construction of the A45 section of the bridge.

Temporary closures are required to enable the existing road layout to be changed with traffic being moved across the carriageways and onto a temporary diversion (including narrow lanes and a reduced speed limit).

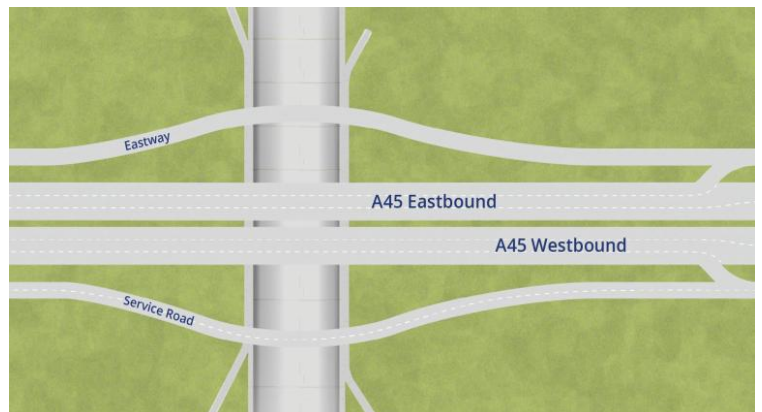
Apart from some temporary closures, the A45 will remain open to traffic during the construction works and we will keep road users, communities and businesses updated on progress.

## Did you know...

The bridge is being built using a **'top down'** construction method, where the side walls and bridge deck are constructed at ground level before the construction of the base.



Artist impression of the A45 Overbridge



Visualisation of the A45 Overbridge, Eastway and Service Road



## Key structures

Solihull is at the heart of the new high-speed railway network which will pass through Balsall Common, Berkswell, Hampton in Arden, Bickenhill and Chelmsley Wood and include the new HS2 Interchange Station. To complete the construction of the railway, a series of highway bridges and road network improvements are required along the A452, Waste Lane and M42.

### A452 Kenilworth Road Overbridge

The A452 Kenilworth Road will be realigned and raised by over 13 metres to pass over the new railway. The bridge has been completed and earthworks for the new road realignment are in progress. A new roundabout will be constructed at this location, utilities will be diverted, two brooks realigned, and extensive road realignment works. To complete these works safely a single lane closure is in place and traffic will be moved across the carriageways, to keep the road open to traffic, in 2025 and 2026.



Artist impression of the A452 Kenilworth Road – aerial view

### Waste Lane Overbridge

Waste Lane Overbridge is currently being constructed off-line to the north of the existing Waste Lane. It will be 70 metres long and 14 metres wide on completion. It will provide connections to Kenilworth Greenway and the design will provision pedestrian and cycle access. As the bridge structure takes shape in 2025, work is required to divert utilities and complete earthworks for the new road realignment which will require a series of temporary road closures.



Artist impression of Waste Lane Overbridge

### M42 Motorway Box

The new railway will cross over the M42 near Birmingham Business Park and the NEC, in Solihull. The M42 Motorway Box, measuring approximately 300 metres long and 25 metres wide will be constructed while the motorway is in operation, over a 33-month period. The first phase of works will see over 200 piles installed before the walls are constructed and the deck is installed. To ensure we can complete construction safely, narrow lanes have been installed and the speed limit has been reduced to 50mph. As we progress construction we will require a series of weekend closures, lane closures and overnight closures when we complete the walls and install the deck. Visit [bit.ly/4hYpKZy](https://bit.ly/4hYpKZy) to read more about the build.



Artist impression of the M42 Motorway Box

# Berkswell Sidings

At the site of the old ‘Royal Berkswell Sidings’ HS2 will be creating a new temporary rail sidings to support the next phase of the construction of HS2, Rail Systems. The sidings will be used to deliver materials by rail.

The sidings will comprise of two low-speed track sections connected to the West Coast Mainline. The site will also continue to have a small office for staff and storage areas for construction materials. A small crane will be introduced for unloading materials.

**What is Rail Systems?**  
Rail Systems refers to the many systems required for trains to run on an operational railway such as the track, overhead catenary system, power supply and signalling.



The current plan for materials, such as long welded rail and pre-cast track slabs, to be transported by rail is based on up to five trains per week. These deliveries will take place at nighttime with unloading in daytime hours. This will reduce the number of HGV movements on the local road network and our carbon footprint.

BBV have been undertaking groundworks and platform construction for the sidings. This is expected to be completed by early 2026. The rail systems contractors will be working on the designs for the next couple of years before the site is set up for use by 2028. The sidings will then be in operational use until the completion of rail systems. On completion, the land will be reinstated.

Material	No. of trains	HGV comparison
Track panels	75	2,325 (One train per 37 HGVs)
Cable troughs	29	508 (One train per 21 HGVs)
Overhead line/cable	18	52 (One train per 5 HGVs)



## M6 South Viaduct

HS2 will launch the first huge viaduct section into place over the M6 motorway network in Solihull in late spring 2025. The M6 South Viaduct is being constructed to enable HS2 trains to pass over the M6 motorway, near junction 4.

The two viaduct bridge decks will be installed separately to create two 315 metre composite decks over the M6 motorway. Work on the viaduct structures started in 2023 to complete piling works and to progress the construction of 8 piers and the abutments which the viaduct decks will sit on in its final position.

Delivery of the viaduct segments began in February with preparation being made by Balfour Beatty VINCI to launch the first section, using a specialist push-pull technique, across the M6 junction 4 off-slip in late spring 2025. This will be followed by further launches across the M6 motorway and slip roads throughout 2025 and 2026\*.

### Construction stats

The construction of the viaduct will require:

**531** tonnes of steel reinforcement

**94** piles

**622.2** metres of steel girders to be driven during the launch



Artist impression of the M6 South Viaduct

### Construction methodology



The construction will unfold in several phases using the **'incremental launch method'**. This involves steel girders welded together on site and then jacked forward across each pier span, anchoring off the abutment and launching foundations.

\*The program is subject to change following alignment with National Highways permitted weekend closures.

## Upcoming works

To ensure that the local road network is compatible with the new railway, we are remodelling and improving existing roads in addition to constructing bridges on motorway and trunk roads.

While most structures will be built offline to minimise disruption to road users, we will need to implement traffic management during the construction phase. Please note the dates below may change and are subject to consent being obtained from the relevant authorities.

For more information about our upcoming works in Solihull, view our Spring 2025 Solihull Construction Look-Ahead by visiting: [bit.ly/41IWvZn](https://bit.ly/41IWvZn) or by scanning the QR code.



	Dates	Traffic management	Description of works
<b>M42 Motorway Box</b>	During 2025	Narrow lanes and speed restrictions	Installing over 200 piles and work on the construction of box walls
<b>Lavender Hall Lane</b>	14 - 17 April 2025	Full closure	Preparatory works and utility works
<b>M6 South Viaduct</b>	16 – 19 May 2025 6 – 9 June 2025	M6 junction 4 southbound off slip closure	Phase one – Launching the east bridge deck over the slip-road
<b>Waste Lane</b>	17 March – 12 April 2025 2 June - 29 June 2025	Full closure	Preparatory works and utility diversions
<b>A452 (Stonebridge Island) &amp; A446</b>	Spring 2025	Temporary lane closures	Preparatory works and utility diversions
<b>A452 (Balsall Common)</b>	29 to 30 March 2025  5 to 6 April 2025	Weekend closures of A452  A lane closure will be in operation throughout the construction period	Utility diversion and highway works
<b>A45 (above Stonebridge Island)</b>	During 2025	Overnight and weekend closures of A45 carriageways and temporary closures of Eastway and Service Road	Complete construction of new service road bridges and road realignments and commence construction of A45 bridge.

\*Dates to be confirmed. These works are subject to consents and dates may change.

## Skills, Education & Employment

February saw the return of National Apprenticeship week – an annual intake of new apprentices to help support Britain's high-speed railway.

Ellie Kent who is 20 and from Solihull, is currently a year into a two-year project management apprenticeship with HS2 Ltd. She aspires to develop her skills and experience with HS2, with the hopes of one day progressing to a senior role within IT or product management.



Apprentice; Ellie Kent from Solihull

“HS2 has been a great starting point in my career – the people are friendly and supportive, and it opens your eyes to the working world in such a bright way. My confidence within myself as a person as well as with my work has increased massively.

I am very proud of the work we are doing [at HS2], as well as being able to tell any kids or grandkids in the future that I was a part of it! I believe that HS2 will be a massive help to the economy, producing jobs and future talent into the industry.”

### Ellie Kent - Apprentice

For a full list of available roles, please visit: [hs2.org.uk/jobs-and-skills](https://hs2.org.uk/jobs-and-skills)

## CEF & BLEF funding

Did you know about our two community and environment funding schemes? The Community and Environment Fund (CEF) and The Business and Local Economy Fund (BLEF).

These funds have been created to benefit communities along the route that are demonstrably disrupted by the construction of HS2. 339 projects have benefited since the scheme started.



To date, 30 awards totalling over £1.27m have been announced in Solihull constituencies.

To find out about more about the funding available and how to apply, please visit: [groundwork.org.uk/grants\\_hs2-funds](https://groundwork.org.uk/grants_hs2-funds)



## Engaging with local communities

We know that planning and building the railway disrupts the lives of local people. We will always try to do the right thing and reduce disruption as much as we can.

Our specialists work across each section of the route and will keep you informed. They will also respond to any question you may have.

Drop-in sessions are held regularly and provide important updates on the project. We encourage attendees to share feedback so we can understand the views of our communities.

We work closely with community groups and local authorities to find ways to mitigate any potential disruption caused by the construction of HS2.

Our teams also support community and school projects to benefit the areas where we work. These include giving back to communities by volunteering, fundraising, or providing materials, labour, or investment. Our helpdesk is open 24/7 – ring us on 08081 434 434 if you would like to discuss an idea with our team.



### Keep up to date on HS2 activity in your area

To receive notifications of our upcoming activity, sign up for email notifications:

**<https://engagement.hs2.org.uk/join-mailing-list/>**

To view more detail on what work is happening near you, visit our interactive map:

**[www.hs2.org.uk/in-your-area/map](http://www.hs2.org.uk/in-your-area/map)**

Find out what engagement events are coming up in your area at:

**[www.hs2.org.uk/events](http://www.hs2.org.uk/events)**

## Come and talk to us at a local drop-in event

### Hampton in Arden

**Focus:** Solihull structures

**Date:** Wednesday 16 April 2025

**Time:** 3pm – 7pm

**Location:** Scout & Guide HQ

Shadow brook Lane

Hampton in Arden

B92 0DQ

**This event is an opportunity for you to find out more about the progress of key structures in the Solihull area including:**

- A452, Waste Lane and Lavender Lane Overbridges
- the viaducts at Balsall Green and the River Blythe
- Berkswell Sidings
- Works taking place on the A45, M42 and M6

**Follow us on social channels**



# Keeping you informed

We are committed to keeping you informed about work on HS2. This includes ensuring you know what to expect and when to expect it, as well as how we can help you.

## The Residents' Commissioner

The independent Residents' Commissioner oversees and monitors our commitments to you.

The commissioner's reports and our responses can be found at [www.gov.uk/government/collections/hs2-ltd-residents-commissioner](http://www.gov.uk/government/collections/hs2-ltd-residents-commissioner)

The Residents' Commissioner makes sure we fulfil the commitments in the HS2 Community Engagement Strategy (<https://bit.ly/3oOA25j>).

The Residents' Commissioner can be contacted on: [residentscommissioner@hs2.org.uk](mailto:residentscommissioner@hs2.org.uk)

## Construction Commissioner

The independent Construction Commissioner regularly meets our Chief Executive Officer to raise any concerns or emerging trends across HS2.

The Construction Commissioner's role has been developed to monitor the way we manage and respond to construction complaints.

The commissioner mediates on disputes about construction, involving individuals and organisations, that we can't resolve. The commissioner advises members of the public about how to make a complaint about construction.

The Construction Commissioner can be contacted on: [complaints@hs2-cc.org.uk](mailto:complaints@hs2-cc.org.uk)

## Property and compensation

You can find out about HS2 and properties along the route by visiting:

[www.gov.uk/government/collections/hs2-property](http://www.gov.uk/government/collections/hs2-property)

Find out if you can claim compensation at:

[www.gov.uk/claim-compensation-if-affected-by-hs2](http://www.gov.uk/claim-compensation-if-affected-by-hs2)

## Holding us to account


If you are unhappy for any reason you can make a complaint by contacting the HS2 Helpdesk. For more details on our complaints process, please visit:

[www.hs2.org.uk/in-your-area/contact-us/how-to-complain/](http://www.hs2.org.uk/in-your-area/contact-us/how-to-complain/)

## Contact us

Contact our HS2 Helpdesk team all day, every day of the year on:

 Freephone **08081 434 434**

 Minicom **08081 456 472**

 Email **HS2enquiries@hs2.org.uk**

Write to:

**FREEPOST**

**HS2 Community Engagement**

Website **[www.hs2.org.uk](http://www.hs2.org.uk)**

To keep up to date with what is happening in your local area, visit: **[www.HS2inyourarea.co.uk](http://www.HS2inyourarea.co.uk)**

**Please contact us if you'd like a free copy of this document in large print, Braille, audio or 'easy read' format. You can also contact us for help and information in a different language.**

HS2 Ltd is committed to protecting personal information. If you wish to know more about how we use your personal information please see our Privacy Notice: <https://www.gov.uk/government/publications/high-speed-two-ltd-privacy-notice>

**Reference number: HS2-MW-BBV-Ph1-Ar-No-N2-Inf-con-18-25/02/2025**

High Speed Two (HS2) Limited, registered in England and Wales.

Registered office: Two Snowhill, Snow Hill Queensway, Birmingham B4 6GA.

Company registration number: 06791686. VAT registration number: 888 8512 56