



Works to build Mandeville Road Headhouse

March 2025 | www.hs2.org.uk

High Speed Two (HS2) is the new high speed railway for Britain.

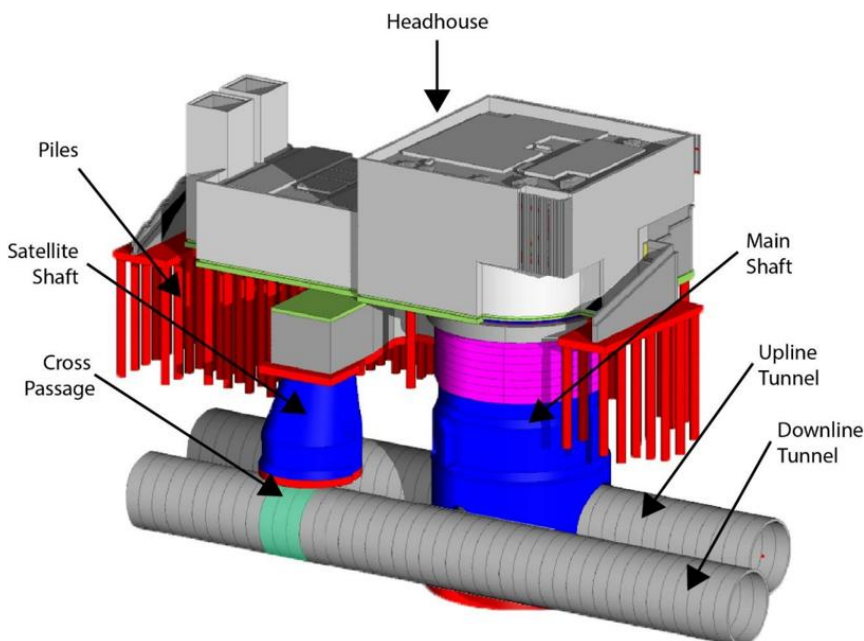
Works to build the headhouse

From 1 April 2025 to February 2026, we will build the Mandeville Road Headhouse.

A headhouse is the building on top of the ventilation shaft which contains the fire control and ventilation systems for the railway tunnels below. The headhouse will also include a fan room (see image below).

The concrete walls of the headhouse will be between 7 and 16 metres high. There is an image of the future headhouse on the next page.

Most of the works will be carried out during core hours, between 8am and 6pm Monday to Friday, and from 8am to 1pm on Saturdays. Some work will need to take place outside these hours; we will keep you informed.



If you have a question about HS2 or our works, please contact our HS2 Helpdesk team on 08081 434 434 or email hs2enquiries@hs2.org.uk

Duration of works

1 April 2025 to February 2026

Working hours:

Monday to Friday 8am to 6pm

Saturdays 8am to 1pm if required

Some work may take place outside core hours

What to expect

Some noise from vehicles and machinery

Additional lighting during low light levels

What we will do

Use acoustic barriers around the machinery to help reduce noise

We will provide updates at hs2.org.uk/brent-and-ealing

Call our HS2 Helpdesk team on **08081 434 434**

Works to build Mandeville Road Headhouse

www.hs2.org.uk

Notification



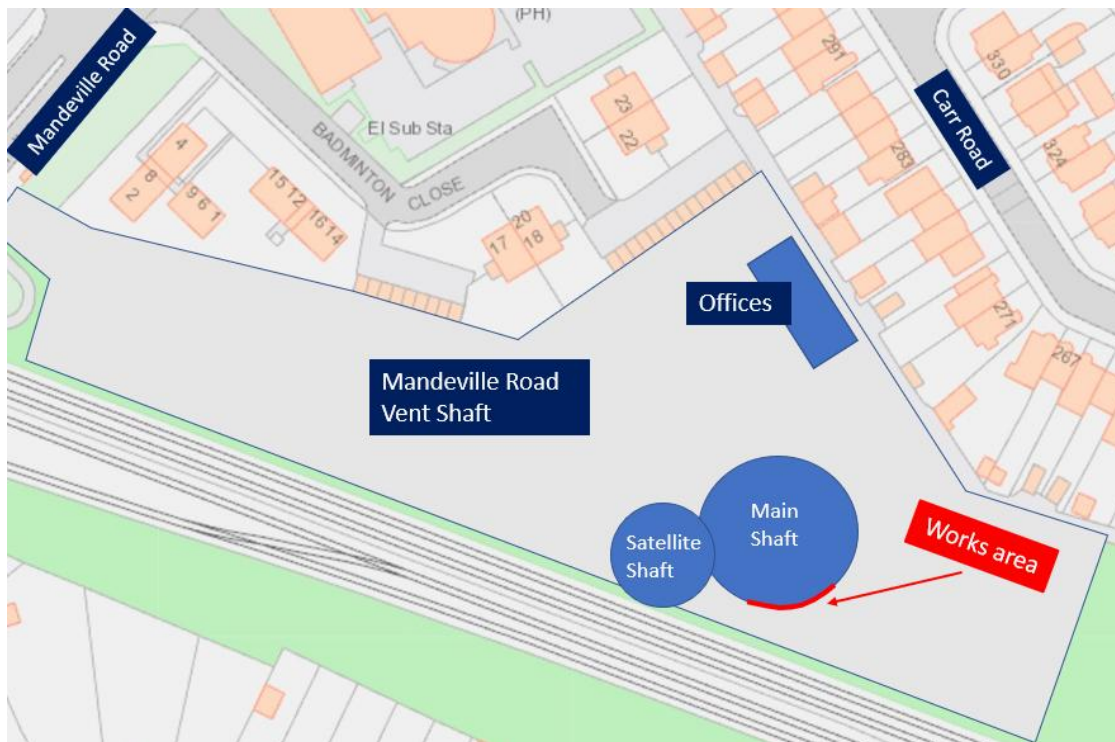
Activities during these works will include:

- Deliveries
- Concrete works
- Steel fixing

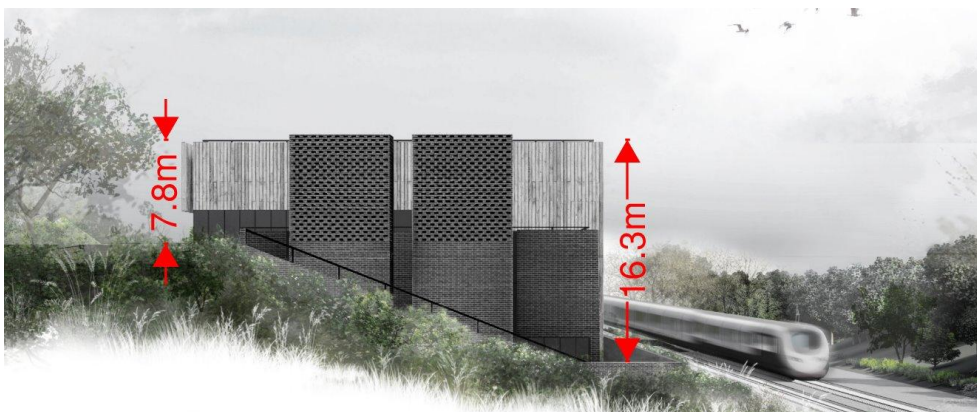
What we will do

We will continue to monitor our activities and implement best practice methods to ensure that works are carried out safely and we minimise any disruption. We will provide regular updates as we continue to build the headhouse.

The map below shows the area where the works will begin.



The image below shows what the headhouse will look like when it's built and what height it will be.



Contact our HS2 Helpdesk team on **08081 434 434**

What else is happening in your area?

www.hs2.org.uk

Contact our HS2 Helpdesk team

Our team is here to listen and respond to your enquiry, complaint or feedback to help us be a good neighbour.

You can contact our Helpdesk team all day, every day of the year on:

Freephone: **08081 434 434**

Minicom: **08081 456 472**

Email: hs2enquiries@hs2.org.uk

Keep up-to-date with your local community website

To find out more about what's happening in your area and receive regular email updates, you can sign up to our local community websites at: www.hs2inyourarea.co.uk.

About our Community and Business Funds

We are offering two funds that are available to local communities and businesses between the West Midlands and London, to help with the disruption caused by our construction work. These are the Community and Environment Fund (CEF) and the Business and Local Economy Fund (BLEF).

The CEF is designed to give communities the opportunity to share in the benefits of HS2. It is an allocated fund that communities are able to apply for, to help to support local projects that aim to improve their local area.

The BLEF is designed to support local economies that may be disrupted by the construction of HS2. BLEF grants are for local business support organisations and local authorities to help maintain business activity in local communities.

For more information about each of these funds, including how to apply, please visit: <https://www.groundwork.org.uk/hs2funds>



Keeping you informed

We are committed to keeping you informed about work on HS2. This includes ensuring you know what to expect and when to expect it, as well as how we can help you.

The Residents' Commissioner

The independent Residents' Commissioner oversees and monitors our commitments to you.

The commissioner's reports and our responses can be found at www.gov.uk/government/collections/hs2-ltd-residents-commissioner

The Residents' Commissioner makes sure we fulfil the commitments in the HS2 Community Engagement Strategy (<https://bit.ly/3oOA25j>).

The Residents' Commissioner can be contacted on: residentscommissioner@hs2.org.uk

Construction Commissioner

The independent Construction Commissioner regularly meets our Chief Executive Officer to raise any concerns or emerging trends across HS2.

The Construction Commissioner's role has been developed to monitor the way we manage and respond to construction complaints.

The commissioner mediates on disputes about construction, involving individuals and organisations, that we can't resolve. The commissioner advises members of the public about how to make a complaint about construction.

The Construction Commissioner can be contacted on: complaints@hs2-cc.org.uk

Property and compensation

You can find out about HS2 and properties along the route by visiting:

www.gov.uk/government/collections/hs2-property

Find out if you can claim compensation at:

www.gov.uk/claim-compensation-if-affected-by-hs2

Holding us to account

If you are unhappy for any reason you can make a complaint by contacting the HS2 Helpdesk. For more details on our complaints process, please visit:

www.hs2.org.uk/in-your-area/contact-us/how-to-complain/

Reference number: HS2-EW-SCS-Ph1-Ar-So-S2-Prog-Works-1-06/03/2025

High Speed Two (HS2) Limited, registered in England and Wales.

Registered office: Two Snowhill, Snow Hill Queensway, Birmingham B4 6GA.

Company registration number: 06791686. VAT registration number: 888 8512 56

Contact us

Contact our HS2 Helpdesk team all day, every day of the year on:

 Freephone **08081 434 434**

 Minicom **08081 456 472**

 Email **HS2enquiries@hs2.org.uk**

Write to:

FREEPOST

HS2 Community Engagement

Website **www.hs2.org.uk**

To keep up to date with what is happening in your local area, visit:
www.HS2inyourarea.co.uk

Please contact us if you'd like a free copy of this document in large print, Braille, audio or 'easy read' format. You can also contact us for help and information in a different language.

HS2 Ltd is committed to protecting personal information. If you wish to know more about how we use your personal information please see our Privacy Notice: <https://www.gov.uk/government/publications/high-speed-two-ltd-privacy-notice>