



# Notice of partial road closure on A47 Heartlands Parkway

March 2025 | [www.hs2.org.uk](http://www.hs2.org.uk)

High Speed Two (HS2) is the new high speed railway for Britain. Balfour Beatty VINCI (BBV) is working in partnership with HS2 Ltd to build the new high speed railway in your area.

## Constructing a new Aston Church Road Overbridge

As we build the new high speed railway line in Birmingham, we need to rebuild the existing overbridge on Aston Church Road. We need to do this work because the existing bridge does not currently have enough headroom for the new HS2 trains to pass underneath.

To rebuild the bridge, we currently have Aston Church Road closed to all vehicles.

## Partial Road Closure

As part of the Aston Church Road closure works, we will also need to close a section of A47 Heartlands Parkway on Saturday 12 April and Sunday 13 April from 8.00pm to 6.00am. See map overleaf for details.

## Diversion route

To keep traffic moving in the area cars will be diverted along A47 Heartlands Parkway, Saltley Viaduct and Washwood Heath Road. Access to businesses and properties will be maintained.

## Finding out more

For details about our events where you can find out more sign up for news alerts via [www.hs2inbirmingham.co.uk](http://www.hs2inbirmingham.co.uk).

**If you have a question about HS2 or our works, please contact our HS2 Helpdesk team on 08081 434 434 or email [hs2enquiries@hs2.org.uk](mailto:hs2enquiries@hs2.org.uk)**

## Duration of works

Saturday 12 April 2025 and  
Sunday 13 April 2025  
8.00pm – 6.00am

## What to expect

Partial overnight road closure on A47 between Star City Roundabout and Saltley Roundabout.

Diversion routes in place.

## What we will do

Ensure that we keep our sites safe and secure.

Keep you updated about any changes via [www.hs2inbirmingham.co.uk](http://www.hs2inbirmingham.co.uk)

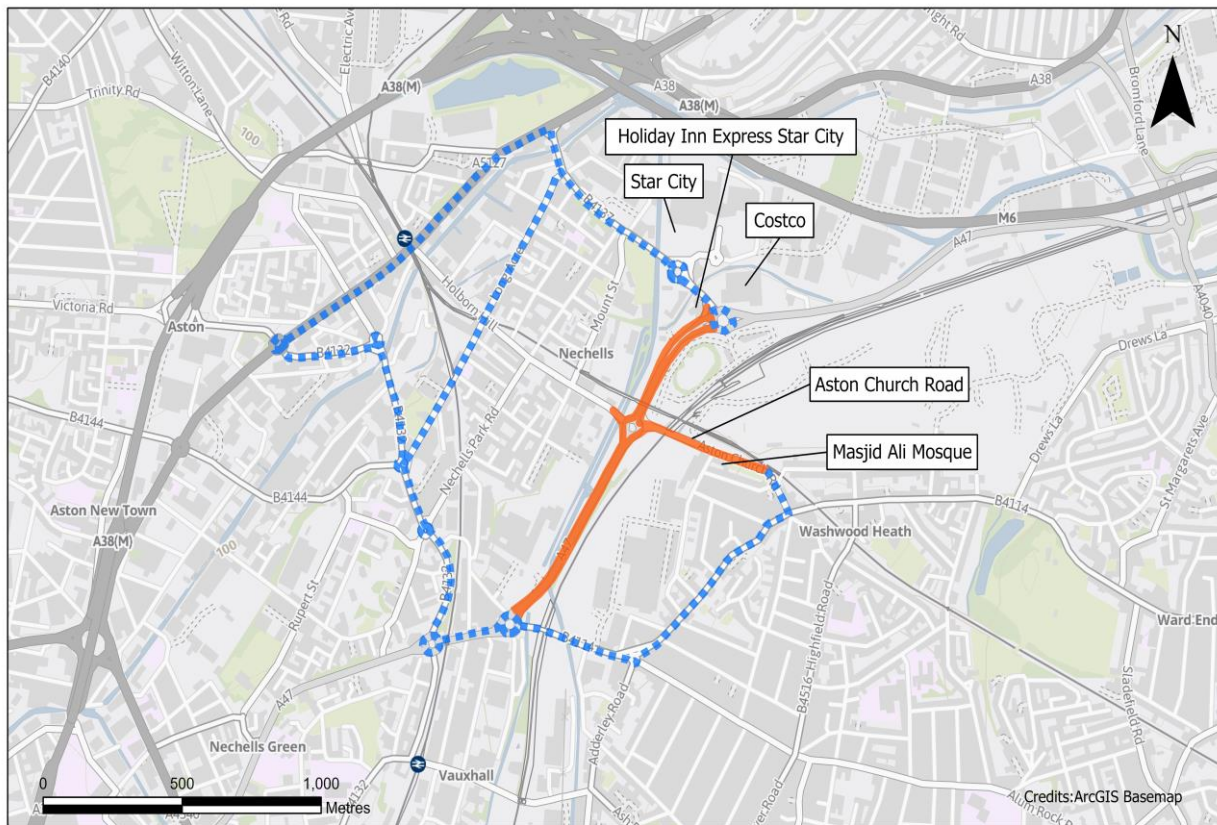
# Notice of road closure Aston Church Road – Birmingham

[www.hs2.org.uk](http://www.hs2.org.uk)

Notification



**A47 temporary closure from Star City roundabout to Saltley Viaduct roundabout diversion route**



- Lane Closure
- - - Diversions

Date:08/08/2024

Scale: 1:15,000

Closure of lanes on Aston Church & Star City roundabout\_INC000004827606\_WM\_BO

Contact our HS2 Helpdesk team on **08081 434 434**



# Keeping you informed

We are committed to keeping you informed about work on HS2. This includes ensuring you know what to expect and when to expect it, as well as how we can help you.

## The Residents' Commissioner

The independent Residents' Commissioner oversees and monitors our commitments to you.

The commissioner's reports and our responses can be found at [www.gov.uk/government/collections/hs2-ltd-residents-commissioner](http://www.gov.uk/government/collections/hs2-ltd-residents-commissioner)

The Residents' Commissioner makes sure we fulfil the commitments in the HS2 Community Engagement Strategy (<https://bit.ly/3oOA25j>).

The Residents' Commissioner can be contacted on: [residentscommissioner@hs2.org.uk](mailto:residentscommissioner@hs2.org.uk)

## Construction Commissioner

The independent Construction Commissioner regularly meets our Chief Executive Officer to raise any concerns or emerging trends across HS2.

The Construction Commissioner's role has been developed to monitor the way we manage and respond to construction complaints.

The commissioner mediates on disputes about construction, involving individuals and organisations, that we can't resolve. The commissioner advises members of the public about how to make a complaint about construction.

The Construction Commissioner can be contacted on: [complaints@hs2-cc.org.uk](mailto:complaints@hs2-cc.org.uk)

## Property and compensation

You can find out about HS2 and properties along the route by visiting:

[www.gov.uk/government/collections/hs2-property](http://www.gov.uk/government/collections/hs2-property)

Find out if you can claim compensation at:

[www.gov.uk/claim-compensation-if-affected-by-hs2](http://www.gov.uk/claim-compensation-if-affected-by-hs2)

## Holding us to account


If you are unhappy for any reason you can make a complaint by contacting the HS2 Helpdesk. For more details on our complaints process, please visit:

[www.hs2.org.uk/in-your-area/contact-us/how-to-complain/](http://www.hs2.org.uk/in-your-area/contact-us/how-to-complain/)

## Contact us

Contact our HS2 Helpdesk team all day, every day of the year on:

 Freephone **08081 434 434**

 Minicom **08081 456 472**

 Email **HS2enquiries@hs2.org.uk**

Write to:

**FREEPOST**

**HS2 Community Engagement**

Website **[www.hs2.org.uk](http://www.hs2.org.uk)**

To keep up to date with what is happening in your local area, visit:  
**[www.HS2inyourarea.co.uk](http://www.HS2inyourarea.co.uk)**

**Please contact us if you'd like a free copy of this document in large print, Braille, audio or 'easy read' format. You can also contact us for help and information in a different language.**

HS2 Ltd is committed to protecting personal information. If you wish to know more about how we use your personal information please see our Privacy Notice:  
<https://www.gov.uk/government/publications/high-speed-two-ltd-privacy-notice>

**Reference number: HS2-MW-BBV-Ph1-Ar-No-N1-Traf-30-17/03/2025**

High Speed Two (HS2) Limited, registered in England and Wales.

Registered office: Two Snowhill, Snow Hill Queensway, Birmingham B4 6GA.

Company registration number: 06791686. VAT registration number: 888 8512 56