

The HS2 route from Euston to West Ruislip

High Speed Two (HS2) is the new high-speed railway for Britain

What we are doing

Skanska Costain STRABAG Joint Venture (SCSJV) are working in partnership with HS2 Ltd to build 26.4 kilometres of the high-speed railway between Euston and West Ruislip.

This includes 21 kilometres of tunnels and the associated ventilation shaft and headhouses to provide access to the tunnels for maintenance and emergency services, ventilation and power supply.

Construction of HS2 is ongoing and we are holding these information events to share the upcoming works.

HS2 route between Euston and West Ruislip



SKANSKA

COSTAIN

STRABAG

Working in partnership with

HS2

Introduction

The 'safe stop' at our **Adelaide Road headhouse and ventilation shaft site** is due to come to an end this spring. The following boards provide background information on the site and outline upcoming works and mitigations.

Where is the Adelaide Road site?

The Adelaide Road site is in the London Borough of Camden, between Chalk Farm and Primrose Hill Road.

The site is located in the Network Rail embankment area opposite the junction connecting Eton Road with Adelaide Road, next to the Adelaide Nature Reserve. The site does not include the nature reserve.

We will be building a ventilation shaft and headhouse in this location.

What is a ventilation shaft?

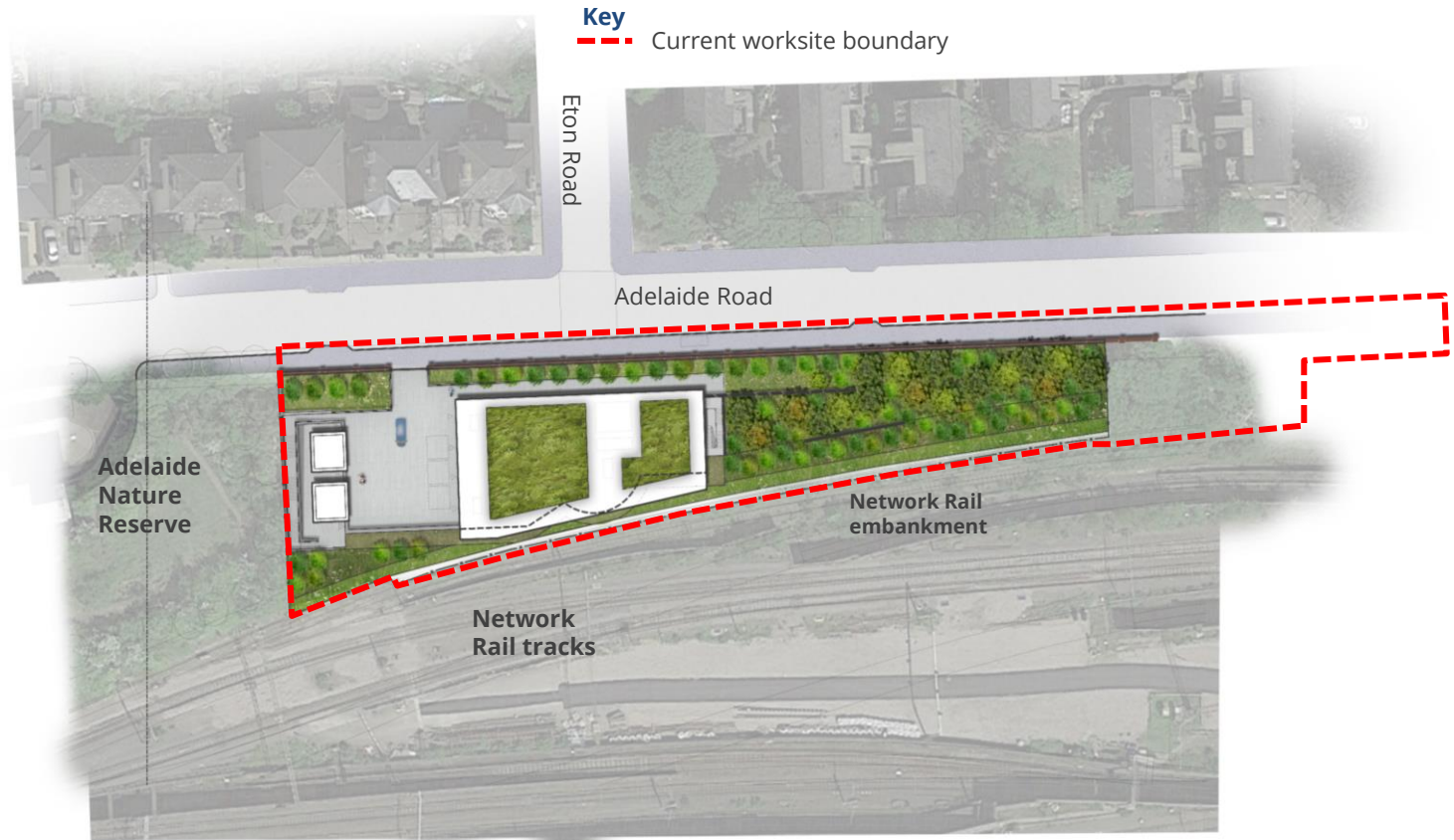
A ventilation (or vent) shaft is a vertical opening that connects the tunnels to the surface and open air. It uses fans located in a fan house to regulate air quality and temperature in the tunnels, provides access for emergency services and allows smoke to be extracted in the event of a fire.

What is a headhouse?

The headhouse is the building on top of the vent shaft. It contains the fire control and ventilation systems for the railway tunnels below. The headhouse will include the fan room.

When will the fans operate?

The fans will operate when extra ventilation is needed within the HS2 tunnels, during maintenance or during an emergency.



Adelaide Road site location

SKANSKA

COSTAIN

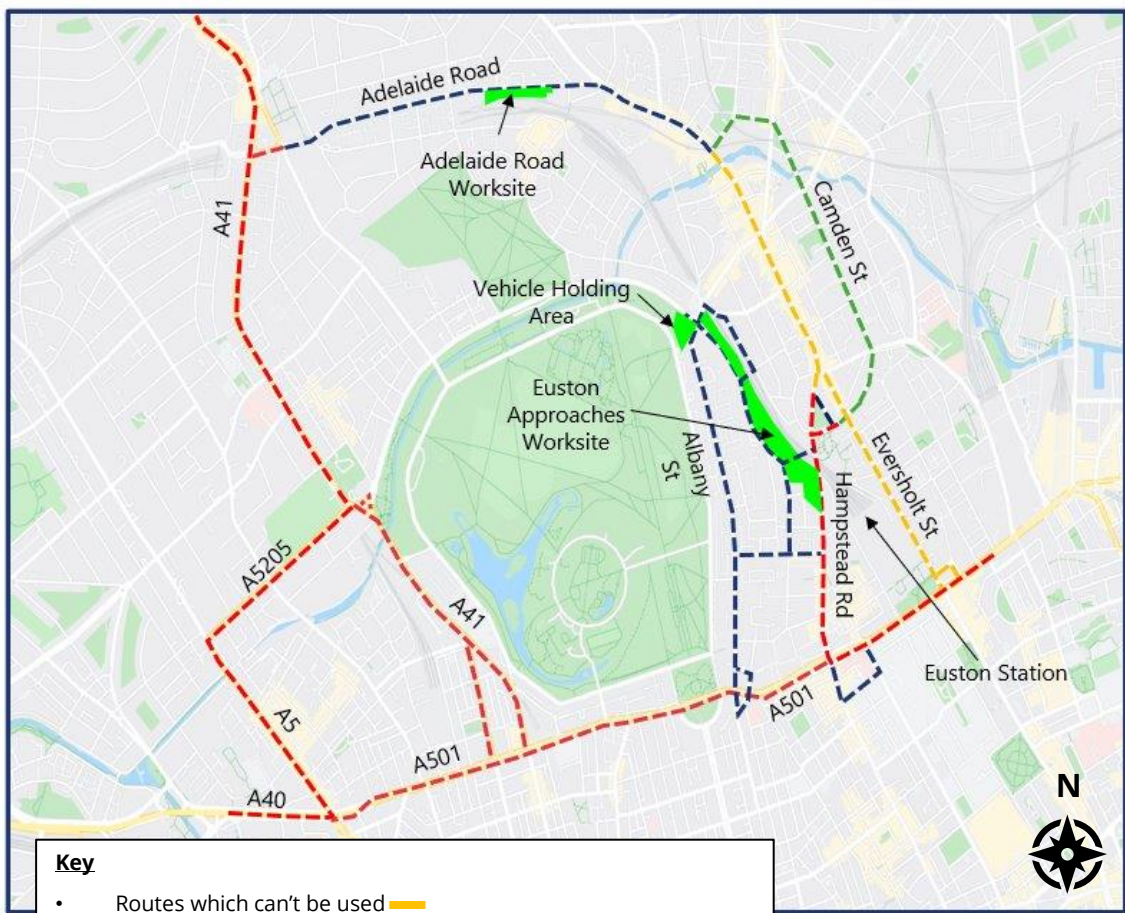
STRABAG

Working in
partnership with

HS2

Lorry routes to and from Adelaide Road site

Lorries travelling to and from the Adelaide Road site will use routes which have been agreed with Camden Council. These are shown on the map and table below.



Key

- Routes which can't be used —
- Approved routes —
- Worksite ■
- Transport for London Road Network - - - -
- Local Authority Road - - - -

Road Name	Start Point (Junction with)	End Point (Junction with)	Authority
Adelaide Road B509 (eastbound)	A41 Transport for London Road Network (TLRN)	Worksite	Camden
Adelaide Road B509 (eastbound)	Worksite	A502 Haverstock Hill	Camden
Haverstock Hill A502 (eastbound)	B509 Adelaide Road	A502 Chalk Farm Road	Camden
Chalk Farm Road A502 (eastbound)	A502 Haverstock Hill	A502 Castlehaven Road	Camden
Castlehaven Road A502 (northbound)	A502 Chalk Farm Road	A502 Hawley Road	Camden
Hawley Road A502 (eastbound)	A502 Castlehaven Road	A400 Camden Street	Camden
Camden Street A400 (southbound)	A502 Hawley Road	A400 TLRN	Camden
Transport for London Road Network (TLRN)	Entire Length		Transport for London

Works done so far

Works to set up our Adelaide Road site began in summer 2020. Since then, the following works have taken place:

- Clearance of vegetation within the site area
- Utility works to divert / protect utility services during construction
- Ground anchors installation
- Piling works to reinforce the ground
- Excavations to reach new site ground level and concrete pours to create the base slab for future vent shaft and headhouse construction

In line with the government announcement in March 2023 on the pause in works building the HS2 station at Euston, work at the Adelaide Road ventilation shaft and headhouse site was brought to a safe stop from 8 May 2024.

We will now be remobilising on site and preparing for construction from April 2025.

1. Ongoing site set up and de-vegetation work – 2021
2. Ground anchors installation – 2022
3. New vehicle haul road – 2022
4. Excavation works to get to required depth of site – 2023
5. Ground preparation for base slab and concrete pours – 2024
6. Concrete base slab – 2024



SKANSKA

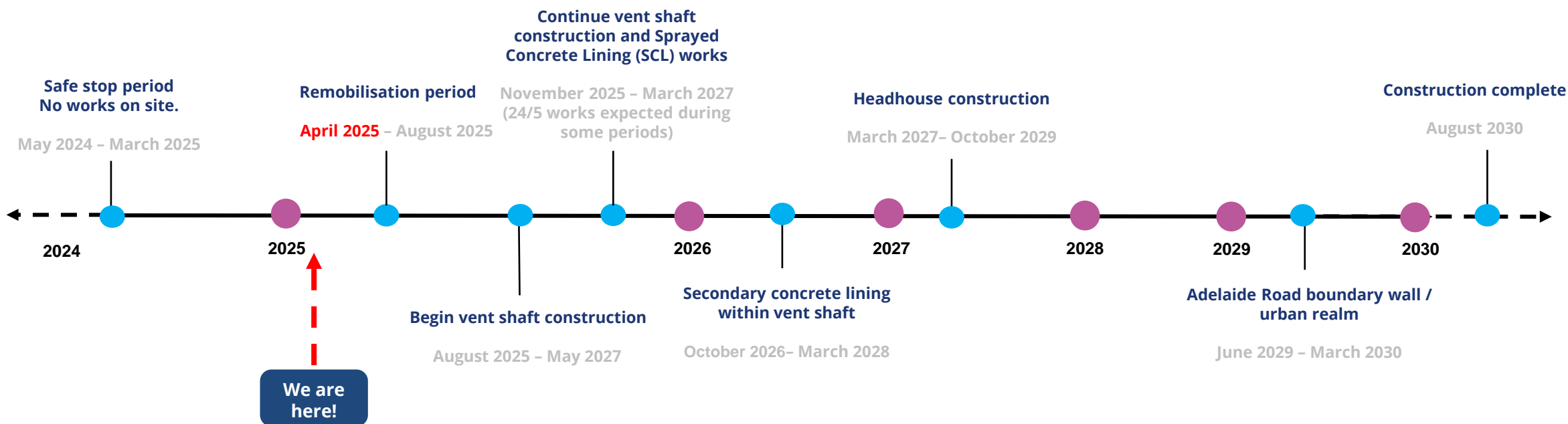
COSTAIN

STRABAG

Working in
partnership with

HS2

Adelaide Road site program*



- Safe stop period commenced 2024 and finishes **March 2025** where no physical works were ongoing within this period
- **April 2025** works will resume where staff will be brought back to site as well as equipment and plant to allow construction to commence
- **August 2025** vent shaft construction begins with installation of precast concrete segments
- **November 2025** vent shaft construction continues transitioning into SCL works

Key

- Key Works
- Year

*These dates are correct as of the February 2025 programme and are subject to change throughout the duration of the project.

Impacts and mitigations



Noise monitors located around site and vicinity to ensure that we keep to agreed levels. Acoustic barriers used where possible.



Dust monitors located around site and vicinity to ensure that we keep to agreed levels. We will use dust mitigating water cannons when required.



Vibration monitors located around site and vicinity to ensure that we keep to agreed levels.



Lighting is required on site for security and safety reasons. We will ensure that these are not directly impacting the community and are within agreed lighting levels.



Where possible, **plant** on site will use hydro-treated vegetable oil (HVO) fuel or run on electricity to help mitigate against dangerous emissions.

We will continue to assess our working methods during our works to ensure we maintain good working practices and keep disruption to a minimum.

Core working hours

Monday to Friday from 8.00am to 6.00pm and Saturdays 8.00am to 1.00pm (If needed)

Extended hours working will be required. We'll let you know in advance when this happens

PLEASE NOTE:

From **November 2025** some activities on site are expected to take place in a **24/5 shift pattern** during some periods*
(7am Mondays – 1pm Saturdays)

*We will provide more information regarding 24/5 works closer to the start of these works



SKANSKA



STRABAG

Working in
partnership with

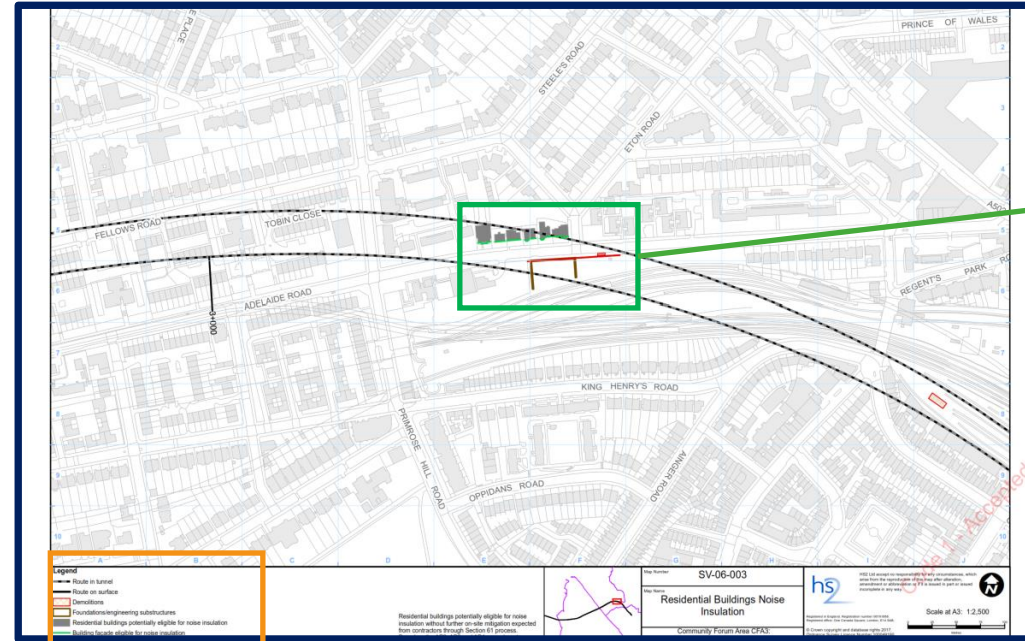
HS2

Noise Insulation scheme (NI)

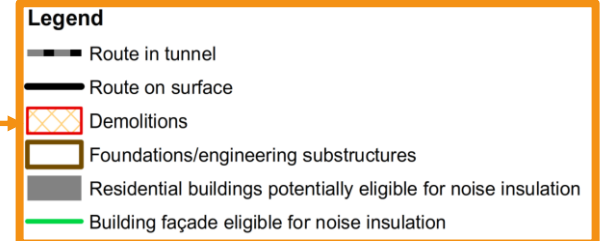
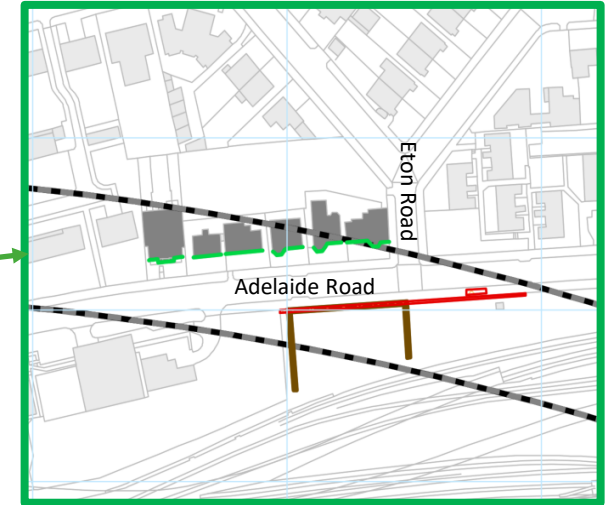
NI refers to the measures we can take to reduce noise at properties that qualify for help.

The measures include:

- fitting secondary glazing to certain windows on eligible walls (secondary glazing is an extra pane of glass fitted inside your window frame);
- installing extra ventilation, if needed, by fixing a small electric fan onto an external wall to draw air into your property, so you can close windows to block out noise;
- blinds for windows that have secondary glazing; and
- insulation for external doors



Residential buildings potentially eligible for the noise insulation scheme



If your property is eligible for the NI Scheme please speak to a member of staff or contact the HS2 Helpdesk on 08081 434 434 or email hs2enquiries@hs2.org.uk

SKANSKA

COSTAIN

STRABAG

Working in partnership with

HS2

Future site boundary wall design

With works due to restart at our Adelaide Road site this spring, we want to provide some clarification on the latest position on the wall design.

The HS2 permanent compound wall for the Adelaide Road headhouse and ventilation shaft is shown in red in Figure 1.

The blue line in Figure 1 shows the location of the remainder of the former wall which will also need to be replaced. We will need to agree the future design of this section with Network Rail because it will be handed back to them when we finish construction.

For more information, please visit: <https://www.hs2.org.uk/about-us/our-documents/adelaide-road-headhouse-and-boundary-wall-design-factsheet/>

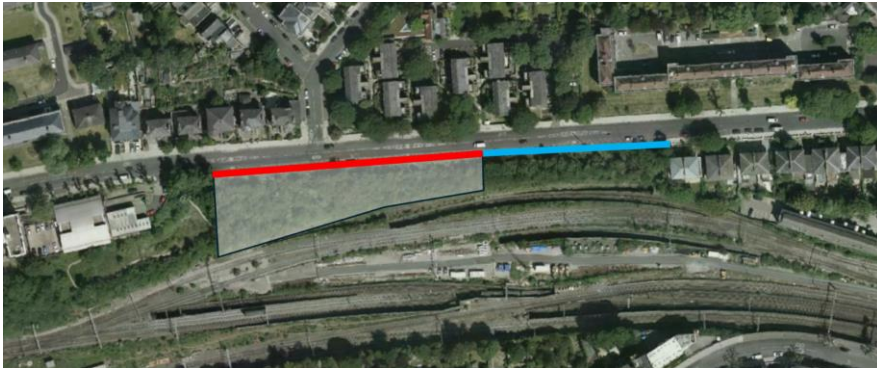


Figure 1

Adelaide Road site permanent compound design illustration

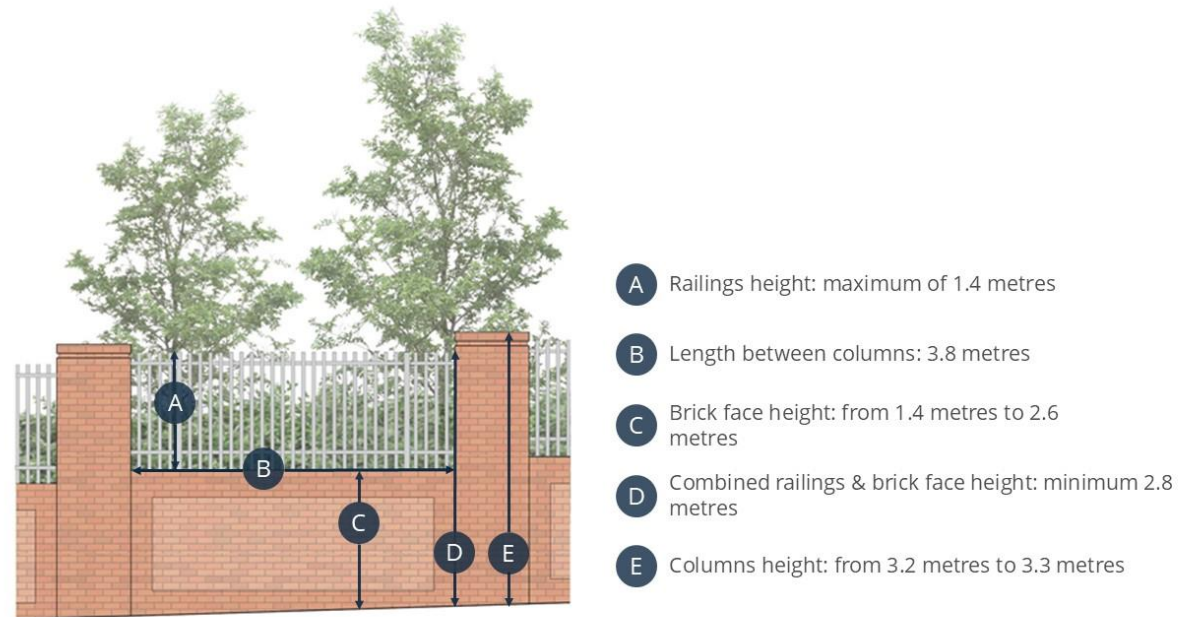


Figure 2

SKANSKA

COSTAIN

STRABAG

Working in
partnership with

HS2

Keeping you informed

View our latest works updates

You can find out more about our ongoing and upcoming works at [HS2 in Camden](#) website.

Community information events

We will be hosting community information events throughout the year. Community will be informed with details prior to event.

Virtual drop-ins

We are running virtual drop-ins on the third Wednesday of every month from 4pm to 6pm.

To book your 20-minute session where you can speak with our community engagement team, please visit:
<https://www.hs2.org.uk/events/virtual-drop-ins-hs2-works-at-adelaide-road-and-south-kilburn-2/>

Contact us

You can contact the HS2 Helpdesk team all day, every day of the year on:

- Freephone: 08081 434 434
- Minicom: 08081 456 472
- Email: hs2enquiries@hs2.org.uk



SKANSKA



STRABAG

Working in
partnership with

HS2