



Notice of temporary 15 Min traffic stops on Bower End Lane, Madeley

February 2025 | www.hs2.org.uk

High Speed Two (HS2) is the new high speed railway for Britain.

Project update

On 4 October 2023, the Government of the day announced a broad range of transport initiatives in place of investing in Phase Two of HS2. This means that HS2 Ltd is not undertaking any 'new' work to progress plans for Phase 2a of the project. Following the general election in July 2024 the new Government have said that they will thoroughly review the position they have inherited before setting out more detailed plans and next steps for this phase of the project.

The activity described below is needed either to finish work on an existing site, for the ongoing maintenance of a site, or for health, safety, and security reasons.

What we are doing

As part of our ongoing maintenance of sites along Bower End Lane, we will be carrying out essential works to roadside Hedgerows on **Tuesday 4th February 2025**. These works are required to ensure the public highway remains clear and safe to use.

We will be enforcing a temporary 15 min delay ensuring the safety of the workforce and road users during this time.

If your journey is affected by these works, we appreciate your patience and understanding for any minor delay. We also urge you to allow additional time for your journey as necessary.

If you have a question about HS2 or our works, please contact our HS2 Helpdesk team on 08081 434 434 or email hs2enquiries@hs2.org.uk

Duration of works

Tuesday 4th February
2025

Time: 9am - 3pm

What we will do

Conduct temporary 15-minute traffic stops.

Carry out the work in compliance with the Code of Construction Practice.

Inform you in advance of any changes to the dates and working times shown.

What to expect

Some low-level noise.

Small delays within the area

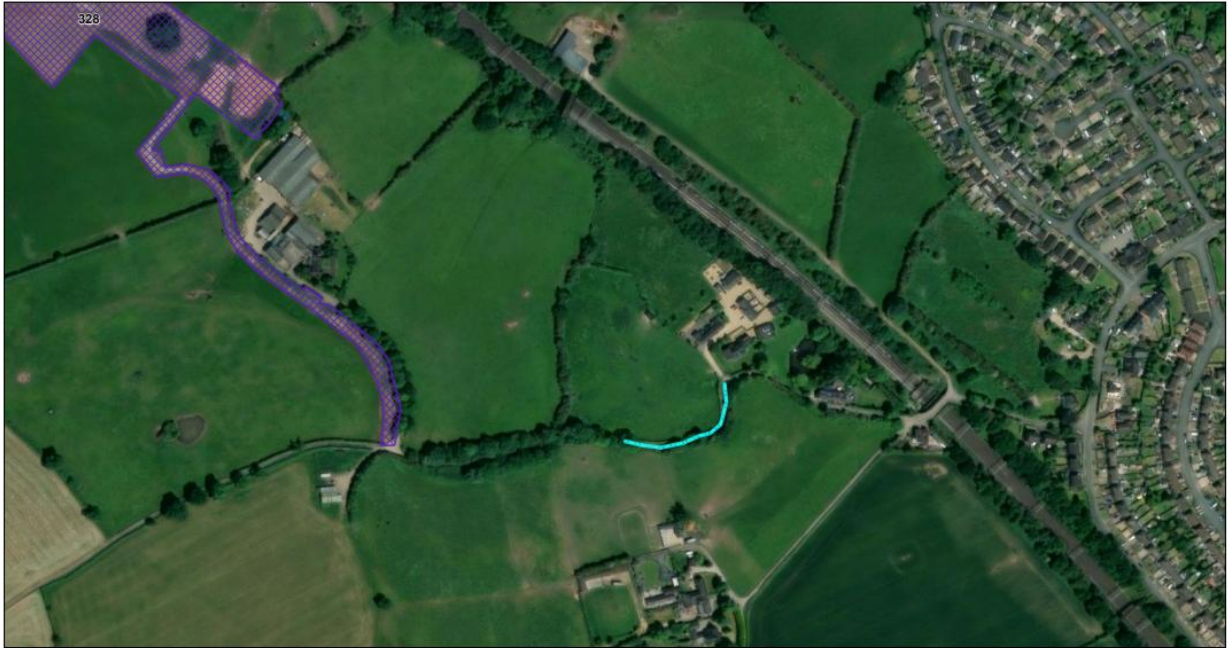
How will this affect you?

We will be enforcing a temporary 15 min delay; vehicles will be allowed through but there will be a slight delay:

Tuesday 4th February 2025 from 9am to 3pm.

The equipment we use may generate some low-level noise. We will be switching off engines when not in use and working during the day to minimise disturbance to residents. The blue-highlighted area indicates the section where the hedgerow will be maintained.

Bower End Lane - North



Keeping you informed

We are committed to keeping you informed about work on HS2. This includes ensuring you know what to expect and when to expect it, as well as how we can help you.

The Residents' Commissioner

The independent Residents' Commissioner oversees and monitors our commitments to you.

The commissioner's reports and our responses can be found at www.gov.uk/government/collections/hs2-ltd-residents-commissioner

The Residents' Commissioner makes sure we fulfil the commitments in the HS2 Community Engagement Strategy (<https://bit.ly/3oOA25j>).

The Residents' Commissioner can be contacted on: residentscommissioner@hs2.org.uk

Construction Commissioner

The independent Construction Commissioner regularly meets our Chief Executive Officer to raise any concerns or emerging trends across HS2.

The Construction Commissioner's role has been developed to monitor the way we manage and respond to construction complaints.

The commissioner mediates on disputes about construction, involving individuals and organisations, that we can't resolve. The commissioner advises members of the public about how to make a complaint about construction.

The Construction Commissioner can be contacted on: complaints@hs2-cc.org.uk

Property and compensation

You can find out about HS2 and properties along the route by visiting:

www.gov.uk/government/collections/hs2-property

Find out if you can claim compensation at:

www.gov.uk/claim-compensation-if-affected-by-hs2

Holding us to account

If you are unhappy for any reason you can make a complaint by contacting the HS2 Helpdesk. For more details on our complaints process, please visit: www.hs2.org.uk/in-your-area/contact-us/how-to-complain/

Reference number: HS2-MW-BBV-Ph1-Ar-No-N1-Traf-28-21/01/2025

High Speed Two (HS2) Limited, registered in England and Wales.
Registered office: Two Snowhill, Snow Hill Queensway, Birmingham B4 6GA.
Company registration number: 06791686. VAT registration number: 888 8512 56.

Contact us

Contact our HS2 Helpdesk team all day, every day of the year on:

 Freephone **08081 434 434**

 Minicom **08081 456 472**

 Email **HS2enquiries@hs2.org.uk**

Write to:

FREEPOST

HS2 Community Engagement

Website **www.hs2.org.uk**

To keep up to date with what is happening in your local area, visit: **www.HS2inyourarea.co.uk**

Please contact us if you'd like a free copy of this document in large print, Braille, audio or 'easy read' format. You can also contact us for help and information in a different language.

HS2 Ltd is committed to protecting personal information. If you wish to know more about how we use your personal information please see our Privacy Notice: <https://www.gov.uk/government/publications/high-speed-two-ltd-privacy-notice>