



Notice of overnight road closures on A38 Southbound, Lichfield from Hilliard's Cross junction to Cappers Lane junction

January 2024 | www.hs2.org.uk

High Speed Two (HS2) is the new high speed railway for Britain. Balfour Beatty VINCI (BBV) is working in partnership with HS2 Ltd to build the new high-speed railway in your area.

Constructing a new Rykneld Street Overbridge

As we build the new high speed railway line in Lichfield, we need to complete some piling works to construct the new Rykneld Street Overbridge.

To build the bridge, we need to close the A38 Southbound overnight from the Hilliard's Cross junction to Cappers Lane junction from Monday 24 February to Friday 28 February 2025, and Monday 3 March to Wednesday 5 March 2025 9.00pm to 5.00am. These are earliest dates subject to change.

Diversion route

To keep traffic moving in the area drivers will be diverted along Wood End Lane to A515 Tewnals Lane, along A51 Stafford Road to A5192 Eastern Avenue to rejoin the A38 carriageway. Access to businesses and properties will be maintained.

Travel times

We understand that travel times may be impacted due to the diversion routes and would advise road users to plan their journeys in advance. Where possible we would advise road users to consider the timings of their journeys to avoid peak traffic hours as well as considering whether they need to drive or if they could use an alternative method of travel.

If you have a question about HS2 or our works, please contact our HS2 Helpdesk team on 08081 434 434 or email hs2enquiries@hs2.org.uk

Duration of works

Full overnight closures from Monday 24 February to Friday 28 February 2025, and Monday 3 March to Wednesday 5 March 2025 9.00pm to 5.00am from Hilliard's Cross to Cappers Lane junctions.

What to expect

Impact to travel times.

Diversion routes in place.

Construction work to create new overbridge.

What we will do

Ensure that we keep our sites safe and secure.

Keep you updated about any changes via www.hs2.org.uk/staffordshire

These works are subject to consent.

Notice of overnight road closures on A38 Southbound, Lichfield from Hilliard's Cross junction to Cappers Lane junction

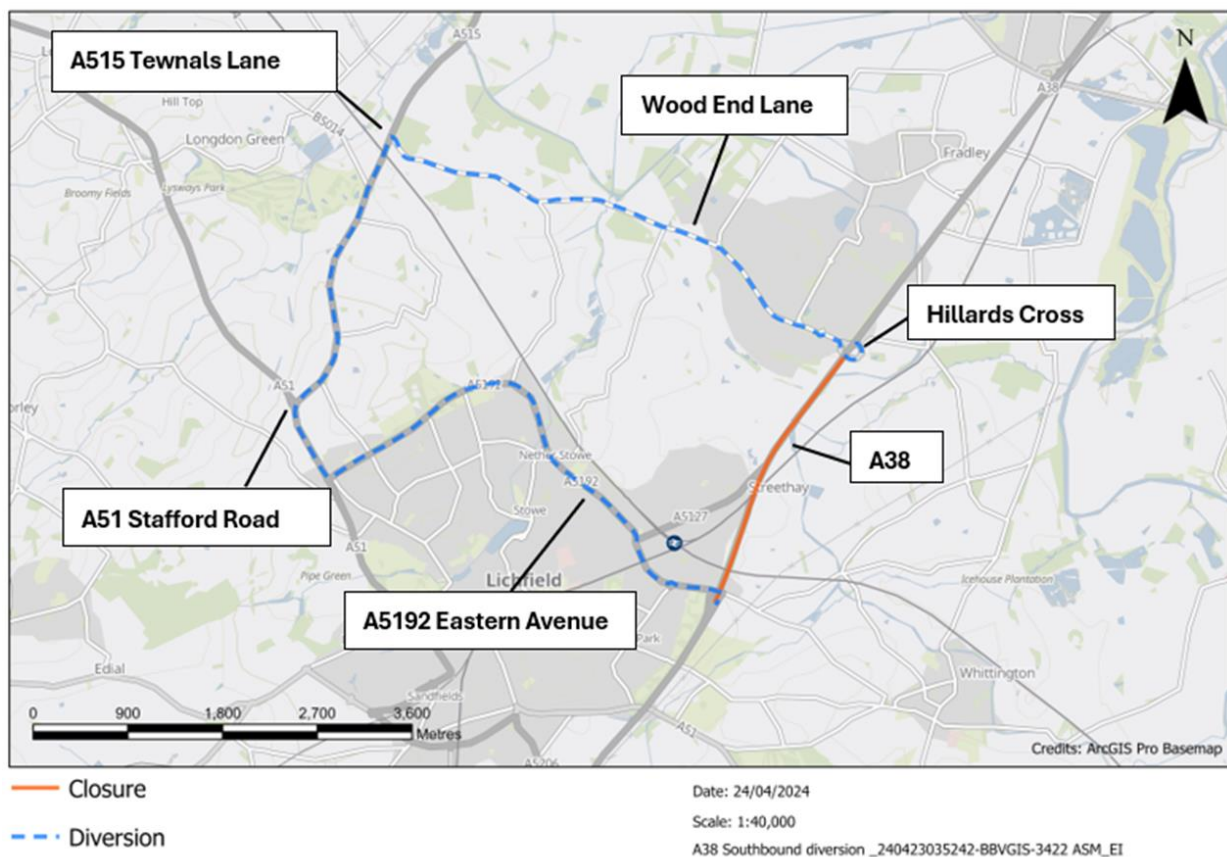
Notification



www.hs2.org.uk

A38 Southbound overnight closure diversion route

Monday 24 February to Friday 28 February 2025 and Monday 3 March to Wednesday 5 March 2025 9.00pm to 5.00am



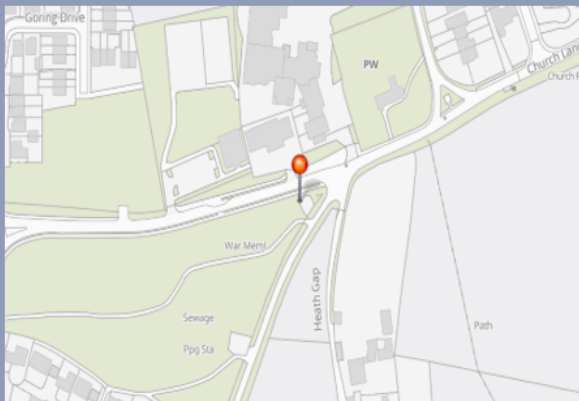
The diversion will be from A38 Hilliard's Cross to Wood End Lane to A515 Tewnals Lane, along A51 Stafford Road to A5192 Eastern Avenue to rejoin the A38 carriageway. Access to businesses and properties will be maintained.

Contact our HS2 Helpdesk team on **08081 434 434**

We would like to invite you to a HS2 drop-in session for the A38 Southbound overnight closures.

High Speed Two (HS2) is the new high speed railway for Britain. We will be holding an informal drop-in event at Fradley Village Hall for the A38 Southbound overnight closures where you can come and chat to your local Community Engagement team. At this event you will be able to:

- Find out more about the upcoming works.
- Talk to your local community engagement team about any queries you may have and community investment opportunities.



Come and talk to us on **Monday 3 February 2025** from **4.15pm to 7pm**

Address: Fradley Village Hall, Church Lane, Lichfield, WS13 8NL

You can register to attend our events by scanning the QR codes on this page. You do not have to register to attend.

We look forward to meeting you.

Reference number: HS2-MW-BBV-Ph1-Ar-No-N1-CR-21-15/01/2025



Freephone **08081 434 434**

Minicom **08081 456 472**

Email **hs2enquiries@hs2.org.uk**

Website **www.hs2.org.uk**

To keep up to date with what is happening in your local area, visit:

www.hs2inyourarea.co.uk

Keeping you informed

We are committed to keeping you informed about work on HS2. This includes ensuring you know what to expect and when to expect it, as well as how we can help you.

The Residents' Commissioner

The independent Residents' Commissioner oversees and monitors our commitments to you.

The commissioner's reports and our responses can be found at www.gov.uk/government/collections/hs2-ltd-residents-commissioner

The Residents' Commissioner makes sure we fulfil the commitments in the HS2 Community Engagement Strategy (<https://bit.ly/3oOA25j>).

The Residents' Commissioner can be contacted on: residentscommissioner@hs2.org.uk

Construction Commissioner

The independent Construction Commissioner regularly meets our Chief Executive Officer to raise any concerns or emerging trends across HS2.

The Construction Commissioner's role has been developed to monitor the way we manage and respond to construction complaints.

The commissioner mediates on disputes about construction, involving individuals and organisations, that we can't resolve. The commissioner advises members of the public about how to make a complaint about construction.

The Construction Commissioner can be contacted on: complaints@hs2-cc.org.uk

Property and compensation

You can find out about HS2 and properties along the route by visiting:

www.gov.uk/government/collections/hs2-property

Find out if you can claim compensation at:

www.gov.uk/claim-compensation-if-affected-by-hs2

Holding us to account

If you are unhappy for any reason you can make a complaint by contacting the HS2 Helpdesk. For more details on our complaints process, please visit:

www.hs2.org.uk/in-your-area/contact-us/how-to-complain/

Contact us

Contact our HS2 Helpdesk team all day, every day of the year on:

 Freephone **08081 434 434**

 Minicom **08081 456 472**

 Email **HS2enquiries@hs2.org.uk**

Write to:

FREEPOST

HS2 Community Engagement

Website **www.hs2.org.uk**

To keep up to date with what is happening in your local area, visit:
www.HS2inyourarea.co.uk

Please contact us if you'd like a free copy of this document in large print, Braille, audio or 'easy read' format. You can also contact us for help and information in a different language.

HS2 Ltd is committed to protecting personal information. If you wish to know more about how we use your personal information please see our Privacy Notice:

<https://www.gov.uk/government/publications/high-speed-two-ltd-privacy-notice>

Reference number: HS2-MW-BBV-Ph1-Ar-No-N2-Traf-04-26/11/2024

High Speed Two (HS2) Limited, registered in England and Wales.

Registered office: Two Snowhill, Snow Hill Queensway, Birmingham B4 6GA.

Company registration number: 06791686. VAT registration number: 888 8512 56