

Contact our HS2 Helpdesk team on **08081 434 434**

HS2 Update

Calvert | Winter 2024



High Speed Two (HS2) is the new high speed railway for Britain. If you have any questions or enquiries regarding our works, please contact our Helpdesk to find out more, details of which can be found in this newsletter. You can sign up for regular updates in your local area at www.hs2inyourarea.co.uk.

Take a look inside our latest Calvert winter newsletter....

Our newsletters are an important way to update local communities on the progress of the HS2 project. This newsletter has been created specifically for the Calvert construction area (CA), located between Twyford and Quainton in Buckinghamshire. It includes the latest information on upcoming construction activities and expected timelines while also highlighting our efforts to support local communities.

In this edition of our newsletter, we will be looking at works coming up over the next few months and this will include:

- Construction update to include;
 - Perry Hill overbridge
 - West Street overbridge
 - Main Street Charndon repairs
 - Calvert Road green overbridge
 - Calvert Green overbridge
 - Addison Road overbridge
 - GUN/28, QUA/36 and Station Road overbridge
 - Green bridges information
 - Hibernation period information
 - Calvert Community Investment and;
 - Map of key locations for HS2 in Calvert



Join us at our next community site tour to see our works up close!

Each month we organise a community site tour which takes visitors from Twyford to Quainton along our site access road adjacent to the HS2 route. A great opportunity to see how our earthworks are managed, structures are progressing and ask questions to EKFB experts.

Please contact the HS2 helpdesk to reserve your space!



Construction update



Perry Hill overbridge and Gawcott Road realignment

The eighty-four parapets have been installed on Perry Hill overbridge, which if laid flat would cover the area of an Olympic swimming pool! During the winter, the bridge deck will be secured to the parapets, the structure will be waterproofed before utilities diversions are completed over the bridge. The new alignment will be complete by the summer of 2025 when you will be able to drive over the bridge.



Figure 2: The image above shows; Perry Hill overbridge which will accommodate the realignment of Gawcott Road during the summer of 2025.



Figure 1: West Street overbridge beams being lifted into place, taken October 2024.

West Street overbridge

Ten 28m bridge deck beams were lifted into position at the end of October using a 600T crane and weighing an extraordinary 500T in total, the equivalent of approx. 84 African elephants! Following this deck lift, the wing walls are progressing, the bridge abutments will be formed, and a concrete pour will create the bridge deck. The road will be realigned over the bridge in late 2025 and will be open to traffic.

Main Street, Charndon road repairs

In mid-October, working with Buckinghamshire Council, EKFB took the decision to do road repairs on Main Street in Charndon, following community feedback that the road surface was in a poor state. Main Street can now be used as the diversion route following the recent closure of Gawcott Road on 28th October. Following concerns about the narrow East West Rail bridge on this diversion route, temporary traffic lights have been installed to allow the safe passing of traffic over the bridge.

Construction update

Calvert Road, (School Hill) green overbridge



School Hill bridge connects the villages of Calvert Green and The Claydons. The old bridge was demolished in January 2024 and we are currently constructing a new 30m wide green bridge.

Concrete pile cap foundations were completed in mid-October. We have backfilled up to the top of the pile caps in order to start steel fixing and concrete works to the abutment and pier walls.

On completion of the walls, the bridge will be ready for the installation of bridge beams in 2025.



Figure 4: The image above shows School Hill overbridge and the completed piling works. Calvert Jubilee Nature Reserve is in the far left, Calvert Green village is located towards the bottom left and School Hill EKFB compound positioned to the right.



Figure 3: The image above shows Calvert Green overbridge.

Calvert Green overbridge

Piling works were completed this summer.

The west abutment pile cap foundations and impact structures have been completed. Works are ongoing to complete the east abutment walls and impact structures. Once all pile cap foundations are complete, stone backfilling will begin to raise the level of the working platform so we can start building the bridge walls.

Construction update

Addison Road overbridge



Figure 5: The image above shows the newly opened Addison Road overbridge.

Following the successful completion of the Addison Road overbridge and road realignment, our team in Calvert were pleased to collectively tick another milestone off our programme by opening the road to the public. We thank you for your patience and co-operation whilst these works were undertaken.

Over the course of four months and numerous challenges

including complex utility works, design changes, and coordination with Network Rail – all whilst managing temporary openings in January and August to mitigate the pressures on the local road users and keep the local communities connected. We hope the community can enjoy the addition of the footpath which connects Steeple Claydon to Calvert Road.

Construction update



Figure 6: Stripping shutters from the diaphragms.

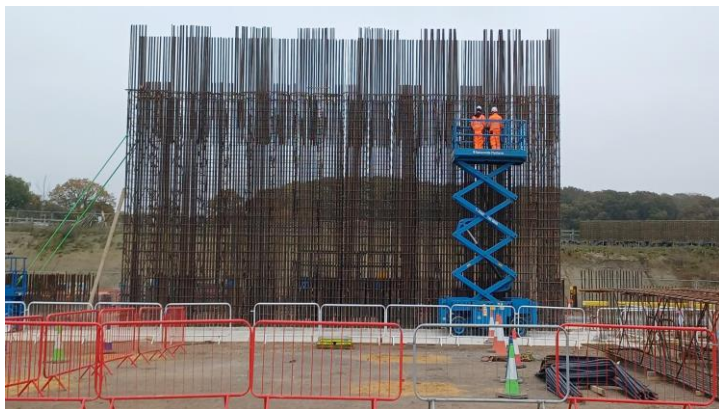


Figure 7: Installing rebar.



Figure 8: Pile cropping.

GUN/28 overbridge

GUN28 overbridge is a 42m wide green overbridge which provides bridleway and footpath access for the public. The bridge also serves as a connection to FCC sidings. The bridge deck is complete and ready for the approach embankments to be constructed. Installation of the formwork for the next phase is almost complete and ready for finishing.

QUA/36 overbridge

QUA/36 is a 48m wide green overbridge. It is situated just south of Edgcott Road and will be used as a footbridge.

All the bases are now finished and are out of the ground. Next, we will be installing rebar for the first abutment pour on the east. Rebar cages are being prefabricated on the ground and lifted into place by crane to prevent fixing at height.

Station Road overbridge

Currently we are in the middle of pile cropping, which will then make way for concrete blinding. This will set the stage for the installation of reinforcement for the abutment wall pile caps. We will then be proceeding with the concreting of the abutment pile cap.

Find out about upcoming works in your area by signing up to the HS2 mailing list by visiting the website below

Please sign up to the HS2 mailing list by visiting the below website where you will be updated with the following;

- emailed a copy of every advanced works notice to inform you of upcoming works to include road closures and traffic management
- emailed details of upcoming engagement events to include our mobile visitor centre events or village hall events
- emailed a copy of our Calvert Newsletter

<https://www.hs2.org.uk/in-your-area/>

Green bridges



What is a green bridge?

Simply, a bridge that combines the needs of humans with the needs of nature. It creates an ecological corridor between different habitats and landscapes, serving badgers, bats, newts, dormice and so on.

The minimum design requirement is specified by the HS2 Ecological Technical Standards and must be a minimum of 40m wide, have 2 lines of hedgerow with a length of 12m and a height of 2m.

Why do we need green bridges?

In Calvert we require a green bridge where it has been identified as a bat foraging route; also known as 'bat flight lines'. These flight lines provide bat species with connectivity across landscapes and habitats. Without them, their behavioural and breeding patterns could be interrupted.

Generally, the pre-construction bat flight lines were across the old bridges or existing vegetation that straddled the historic MCJ line which ran between Quainton and Calvert.

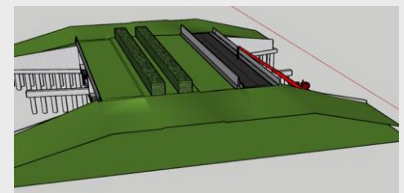
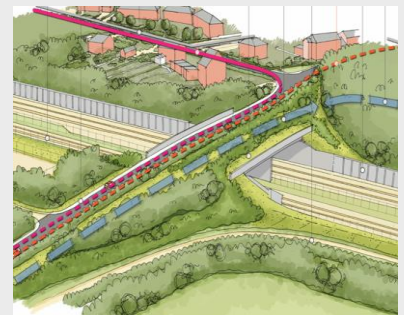


Figure 9: Top image shows an artist's impression of the Calvert landscape and the identified bat movement corridor.

The bottom image shows the design of a typical green bridge.

Hibernation period

Site preparation for winter hibernation period

Winter hibernation period is between mid-October and mid-November, dependent on seasonal temperatures. After this, EKFB will be required to adopt winter working measures in respect of ecological restraints.

Many species survive the harsh conditions and reduction in food availability by seeking refuge in opportunist areas and enter a state of torpidity (semi-hibernation) and hibernation.

This means that site teams must prepare the areas in which winter works are required, to make them unsuitable for hibernating animals. This might include:

- Removal of tree stumps, mulch and log piles and any vegetation below ground that could otherwise support hibernating animals. Also included in this list is hedgerow bases, areas of scrub, woodland, piled debris and root balls.
- Any Great Crested Newt fencing that needs to be removed or realigned, should be completed before hibernation season.
- Trees or buildings that are to be cleared/demolished over the winter period and have the potential to support hibernating bats, must be removed under supervision.
- Bog matting should be sealed or removed.



Figure 10: Dormouse.



Figure 11: Pipistrelle Bat.



Figure 12: Great Crested Newt.

Community Investment

Girl Guiding Community

Making tracks into construction

EKFB hosted the 1st Buckingham Guides and Tingewick Brownies for an event designed to give them a glimpse into the construction sector and showcased some of our female members of staff. These real-life examples showed our young visitors that working in a traditionally male-dominated environment is no longer a barrier to women.

One of the highlights was the state-of-the-art simulator experience (kindly provided by Flannery's). The girls got hands-on practice operating heavy machinery in a safe and controlled environment. But first, much fun was had trying on the PPE – they enjoyed 'looking the part'. This interactive session not only entertained but also educated about the precision and skill involved in modern construction work.

Also adding to the excitement were all-female presentations from leading professionals within EKFB. They shared their personal journeys into the construction industry, highlighting the diverse routes into the field, emphasising that there is no single way to succeed.

A delicious hot lunch was provided by our very own Bon Appetit and allowed a rest after the excitement of the simulator. Finally, photos in our welfare area and a complimentary goody bag filled with fun but vital information were handed out to the guides and brownies as a closing treat!



Figure 13: Dressing up in PPE, ready for the simulator.

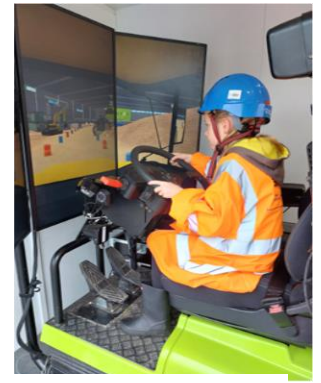


Figure 14: Concentration required when operating an ADT.



Figure 15: Brownies lined up ready for action.



Figure 16: Whole group photo.

Community Investment

Quainton School garden make over

In August our teams across EKFB, Kier Transportation, and H W Martin joined forces with Quainton C of E Primary School to revive the school garden ahead of the new school term. The project forms part of our commitment to the school's eco-warriors in encouraging stronger relationships with nature and fostering positive environmental practices.

The school's garden was looking in a sorry state, overgrown, and in some parts inaccessible for both teachers and students to fully utilise. However, with the benefit of our expertise and with our tools in tow, the team across Calvert were more than happy to transform the space into a safer and more suitable environment for both teachers, students, and their local wildlife to enjoy.

Works began with tackling the overgrowth, cutting back the grass and brambles, revealing the school's pond and firepit. With their paint brushes in hand, the team gave the tired looking benches and spare tires a fresh coat of paint, making the space look a lot less wild and whole lot greener!

Adding the finishing touches, the team set about installing multiple bird boxes high up in the branches, with fairy doors placed at the foot of the trees. In keeping with the environmental theme, animal shaped wind chimes were dotted around the space for students to foster a calm and relaxing environment.



Figure 17: Pond, before and after.



Figure 18: Buddy Benches, before and after.



Figure 19: Fire pit, before and after.

Community Investment



Steeple Claydon Fireworks Event

EKFB, in conjunction with Speedy Services delivered three tower lighting columns to Steeple Claydon's fireworks event. We were also able to loan 30 traffic cones for the event so that visitor areas were clearly marked for safety reasons. The event raised over £5000 for charity!



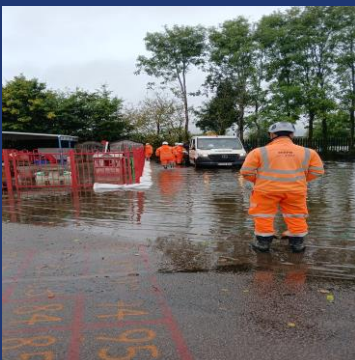
Twyford Women's Institute

Eleven members of the Women's Institute in Twyford joined EKFB staff on a site tour of HS2 from our West Street compound to Station Road. They were very impressed!

"Thank you so much for our tour yesterday. We all had a lovely time and found it all very informative and interesting."

Calvert litter pick

We have been continuing with our regular litter picks. In September we filled two bin bags from the Springhill Road area in Grendon Underwood. In October we collected a bag full of rubbish in Edgcott. Please let us know of any suggested areas of focus.



Flooding in Calvert

During the recent rainfall EKFB assembled and delivered 100 sandbags to Steeple Claydon School. EKFB staff piled sandbags in the playground to prevent further flooding of their play area. Cllr Mahon confirmed that the school were most grateful.

Community Investment



Circle Centre Nursery, Middle Claydon

EKFB have been very pleased to help a vital early autism support service in Middle Claydon, Buckinghamshire.

The Nursery has been renovating their outdoor space and were grateful of a donation from EKFB of a large sensory caterpillar mirror, a waterwall and bird boxes.

We contributed 50% towards the cost of a well needed new carpet for their main teaching room. Creative staff members have even utilised the off-cuts to be used as mats in adjacent rooms. They are loving the luxury!

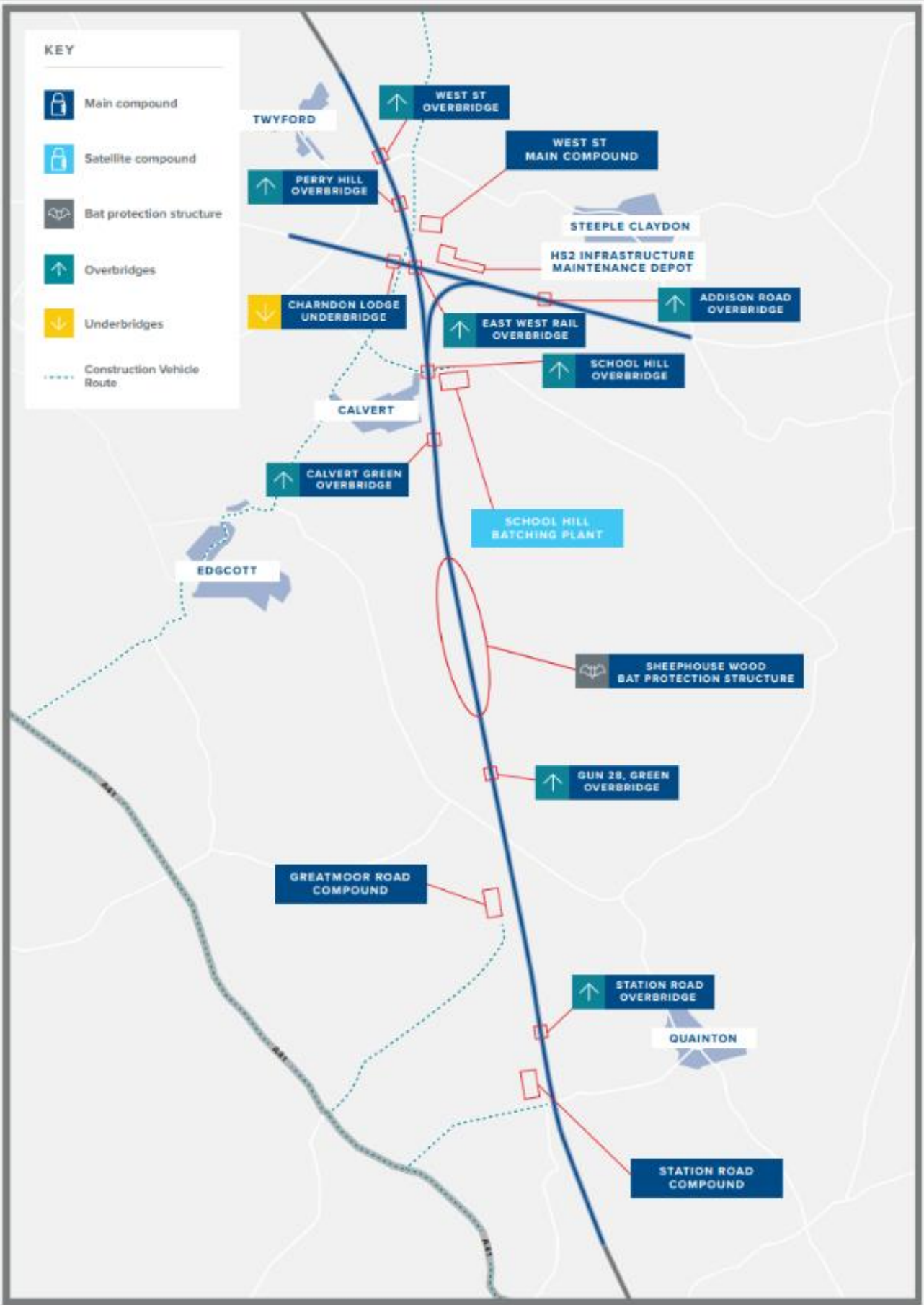
Finally, the driveway was full of potholes, making it difficult for parents when dropping off and picking up their children. EKFB donated 20 tonnes of hardcore and an operative with a machine who spent time levelling and resurfacing the ground. It not only looks great but is much safer for all.



Twyford Allotments wood chippings

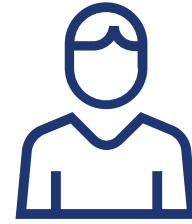
EKFB and HW Martin donated and deliver wood chippings to Twyford allotments. The allotment owners gratefully received this gift and assured us that it will all be put to very good use.





What else is happening in your area?

www.hs2.org.uk



Keep up-to-date with your local HS2 community website

To find out more about what's happening in your area and receive regular email updates, you can sign up to our local community websites at: www.hs2inyourarea.co.uk.

Contact our HS2 Helpdesk team

Our team is here to listen and respond to your enquiry, complaint or feedback to help us be a good neighbour. You can contact our Helpdesk team all day, every day of the year on:

Freephone: **08081 434 434**

Minicom: **08081 456 472**

Email: hs2enquiries@hs2.org.uk



About our Community and Business Funds

We are offering two funds that are available to local communities and businesses between the West Midlands and

London, to help with the disruption caused by our construction work. These are the Community and Environment Fund (CEF) and the Business and Local Economy Fund (BLEF).

The CEF is designed to give communities the opportunity to share in the benefits of HS2. It is an allocated fund that communities can apply for, to help to support local projects that aim to improve their local area.

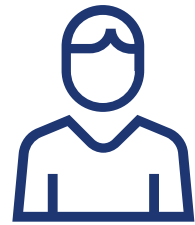
The BLEF is designed to support local economies that may be disrupted by the construction of HS2. BLEF grants are for local business support organisations and local authorities to help maintain business activity in local communities.

For more information about each of these funds, including how to apply, please visit:

<https://www.groundwork.org.uk/hs2fun>



Keeping you informed



We are committed to keeping you informed about work on HS2. This includes ensuring you know what to expect and when to expect it, as well as how we can help.

Residents' Charter and Commissioner

The Residents' Charter is our promise to communicate as clearly as we possibly can with people who live along or near the HS2 route.

www.gov.uk/government/publications/hs2-residents-charter

We also have an independent Residents' Commissioner whose job is to make sure we keep to the promises we make in the Charter and to keep it under constant review. Find reports at:

www.gov.uk/government/collections/hs2-ltd-residents-commissioner

You can contact the Commissioner at:
residentscommissioner@hs2.org.uk

Construction Commissioner

The Construction Commissioner's role is to mediate and monitor the way in which HS2 Ltd manages and responds to construction complaints. You can contact the Construction Commissioner by emailing:
complaints@hs2-cc.org.uk

Property and compensation

You can find out all about HS2 and properties along the line of route by visiting:

www.gov.uk/government/collections/hs2-property

Find out if you're eligible for compensation at:

www.gov.uk/claim-compensation-if-affected-by-hs2

Holding us to account

If you are unhappy for any reason you can make a complaint by contacting our HS2 Helpdesk team. For more details on our complaints process, please visit our website:

www.hs2.org.uk/how-to-complain

Contact Us

Contact our HS2 Helpdesk team all day, every day of the year on:

 Freephone **08081 434 434**

 Minicom **08081 456 472**

@ Email **HS2enquiries@hs2.org.uk**

Write to:

FREEPOST

HS2 Community Engagement

Website **www.hs2.org.uk**

To keep up to date with what is happening in your local area, visit:
www.HS2inyourarea.co.uk

Please contact us if you'd like a free copy of this document in large print, Braille, audio or easy read. You can also contact us for help and information in a different language.

HS2 Ltd is committed to protecting personal information. If you wish to know more about how we use your personal information please see our Privacy Notice
<https://www.gov.uk/government/publications/high-speed-two-ltd-privacy-notice>

Reference number: HS2-MW-EK-Ph1-Ar-Ce-C1-Prog-works-28-09/10/2024

High Speed Two (HS2) Limited, registered in England and Wales.

Registered office: Two Snowhill, Snow Hill Queensway, Birmingham B4 6GA.

Company registration number: 06791686. VAT registration number: 888 8512 56