

Contact our HS2 Helpdesk team on **08081 434 434**

# HS2 Update

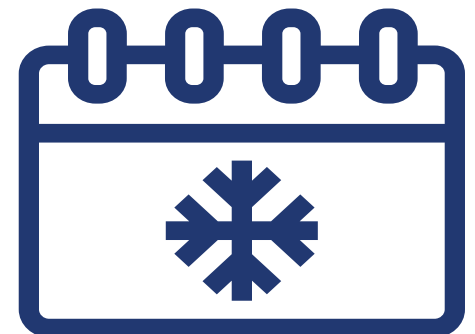
Greatworth to Southam | Winter 2024



High Speed Two (HS2) is the new high speed railway for Britain.

If you have any questions or enquiries about our work, please contact our Helpdesk to find out more.

You can sign up for regular updates in your local area at [www.hs2inyourarea.co.uk](http://www.hs2inyourarea.co.uk).



## Inside our winter newsletter...

- Update on viaducts;
  - Edgcote viaduct
  - Highfurlong Brook viaduct
  - Oxford Canal viaduct
- Boddington area update
- Construction near the road network
- Lookahead to 2025
- Community projects and volunteering

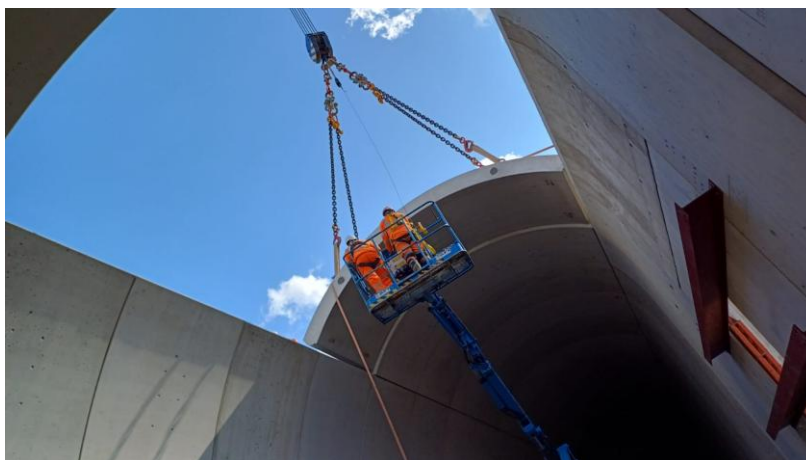


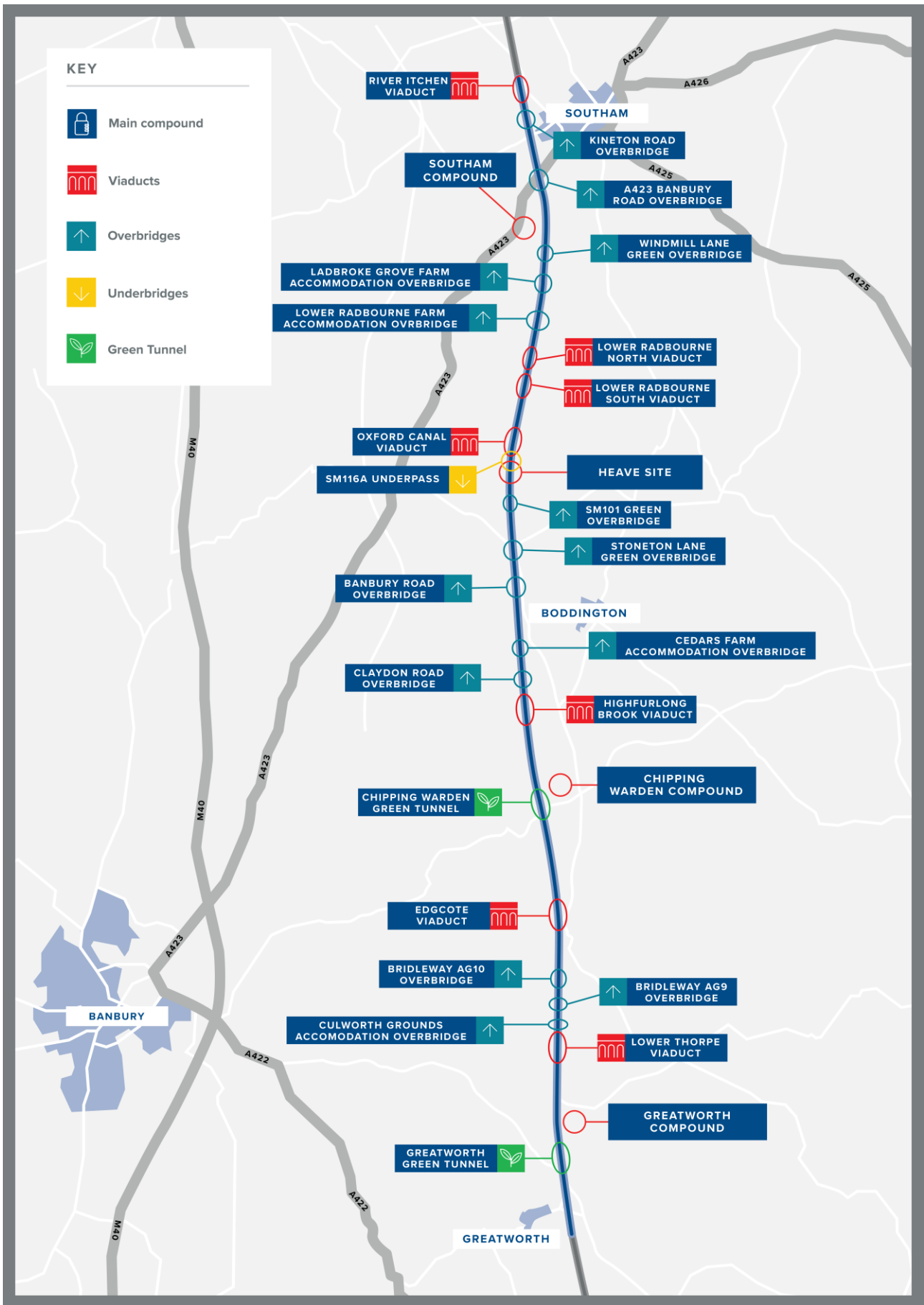
Figure 1: An arch segment being installed at Chipping Warden green tunnel, over 1km of the tunnel has been installed and waterproofing continues over the winter.

## Visiting communities

If you would like us to visit your area, please get in touch via the HS2 helpdesk.

Details of all upcoming events for 2025 will be listed here:

[www.hs2.org.uk/events](http://www.hs2.org.uk/events)



# Construction update

## Edgcote viaduct

Set low into the landscape, the 515-metre-long Edgcote viaduct will carry the railway across the floodplain of the River Cherwell, south of Chipping Warden. The viaduct is set to become only the second in the UK to have all its major structural elements manufactured off-site helping to speed up construction, boost efficiency and reduce the number of lorry movements on local roads.

The viaduct has undergone a structural redesign to cut its carbon footprint by more than 13% compared to the previous design. The lighter weight, modular design cuts the amount of concrete and steel needed and will be manufactured off site at a facility in Kent.

Of the 19 pairs of concrete piers, three have been installed to date, with the rest progressing over the coming months. The piers are between six and eight metres high and will support the viaduct. The pier connections conceal the bearings for a slender, cleaner appearance and the parapets are textured to provide fine detail and mask connection joints.

As a result of keeping the structure low, from a distance, the viaduct will be largely hidden by existing hedgerows and woodland. The design of the viaduct also allows for the natural meander of the River Cherwell to be maintained. Our proposal also includes new wildlife sites for birds, bats and newts – as well as marshland and meadow.

As part of the construction around the viaduct we are re-grading the road that runs under the viaduct from Trafford Bridge on Welsh Road to Wardington village. This involves levelling the road so it can pass smoothly under the viaduct at the correct height.

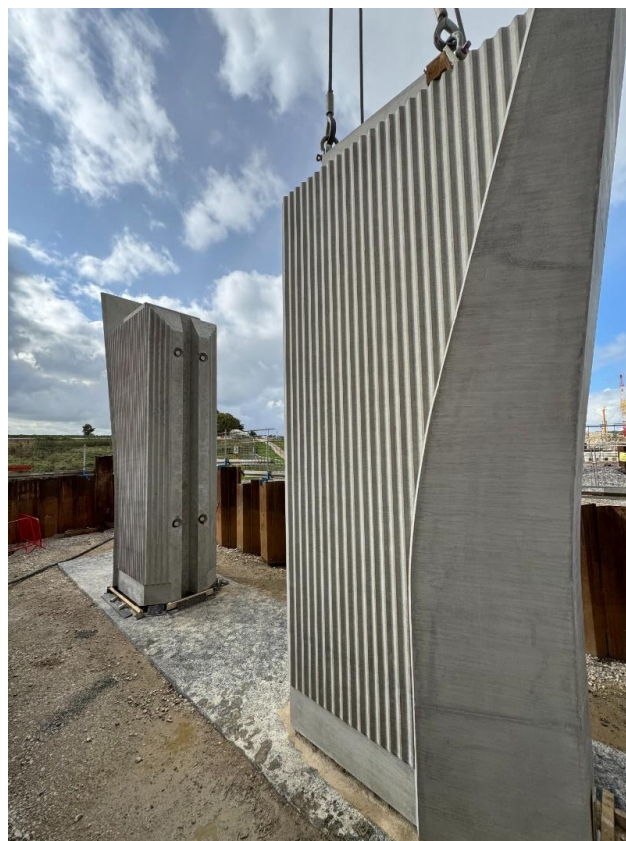


Figure 2: Pre-cast piers are being installed.

**You can watch a short video about the viaduct by scanning the QR code below.**



**Link: [Work begins on HS2's half-kilometre long Edgcote viaduct](#)**

# Construction update

## Highfurlong Brook viaduct

The 163m long Highfurlong Brook viaduct, near the village of Aston le Walls, is one of more than 50 viaducts being built as part of the new rail project, which is designed to improve journeys between London and the North, while freeing up space on the most crowded part of the existing West Coast Mainline for more freight and local services.

Consisting of seven spans, the viaduct crosses Highfurlong Brook's floodplain at a height of around 9m. Each span is made up of four beams weighing up to 56 tonnes and were lifted into position last year to form the backbone of the structure.

Each of the beams, which are up to 25m long, were manufactured off site before being delivered over night to reduce disruption for local road users. The deck, which will support the track and electrical systems, was poured in situ earlier this year, with the parapets along each side manufactured off site and installed over the last four months.

The viaduct is one of around 500 bridging structures on the HS2 project which range from small road bridges and drainage culverts to massive viaducts like the record-breaking Colne Valley viaduct which will become the longest in the UK when its deck is completed.

Over the summer our teams completed the foundations, piers and bridge deck of the viaduct. Looking ahead into winter, they will begin constructing the wingwalls and abutments. The structure is expected to be completed in late 2025.



Figure 3: Aerial image of Highfurlong Brook viaduct, August 2024.



# Construction update

## Oxford Canal viaduct

The Oxford Canal viaduct is located between Banbury and Daventry and is one of 15 viaducts and bridges across the central area of the HS2 route. It crosses the Oxford Canal, which is one of the oldest in Britain and was designed to bring coal from the Coventry coalfields to Oxford and the River Thames.

Set low in the landscape three concrete spans will carry the railway 62.5 metres across the canal, towpath, and a country lane near the village of Wormleighton close to the border between Warwickshire and West Northants. Following engagement with the local community, local ironstone has been used on the piers and abutments that face onto the towpath and passing canal boats.

Over the summer months, our stonemasons clad the concrete structure under the viaduct with ironstone. Once completed, four precast concrete beams were lifted into place. Over the coming months north and south abutments will be constructed, and the remaining beams will be lifted into place later in 2025.

As well as using local stone the viaduct has been designed to be as open as possible to improve the environment for boaters and walkers, allowing views across the landscape and the horizon. The design combines a simple overall form with a special focus on materials for the parts of the structure that are close to the canal and its visitors.



Figure 4: Stone cladding on the structure at canal level.



Figure 5: Deck beams installed over the Oxford Canal.



Figure 6: Artist's impression of the completed viaduct.

## Construction update

### New bridges and highway in the Boddington area

On the border between Warwickshire and West Northamptonshire, we are building a new section of highway and two road bridges. Once open, these will enable local roads to pass over the HS2 railway line.

#### Banbury Road overbridge

In our previous local update, we explained that the construction of Banbury Road overbridge has been delayed due to the changed design to the bridge parapets.

The design for the parapets has now been finalised and these are being built at the factory. Installation has now started on along the main bridge deck. We will be working seven day a week over the coming months, excluding the Christmas bank holidays to complete the installation of the parapet and vehicle restraint system.

A road closure of Wormleighton Road and Warwick Road will be required to complete the tie-in to the existing road, although we are seeking to reduce the length of the closure as much as we can and will communicate our plans once they have been developed and dates have been agreed.

#### Stoneton Lane Green overbridge

Early earthworks for Stoneton Lane green overbridge have begun in the area adjacent to the road. In spring 2025 we will then need to close Stoneton Lane as we excavate a deep cutting in the area and start the foundation structure of the new bridge. Stoneton Lane is expected to be

closed for approximately two years whilst the bridge is built. Once completed the road, footpath and double hedge row will allow people and wildlife to cross the HS2 railway.

#### Claydon Road overbridge

The bridge construction at Claydon Road is progressing well and the main concrete deck has recently been waterproofed, and drainage installed. The parapet installation has begun, and the bridge is expected to be completed in the spring.



Figure 7: The first parapet was installed on Claydon Road overbridge in November.



#### Working Hours Update

Our extended working hours for winter has been consented by the local authorities. It allows us to work from 7.30am in the morning and up to 8pm in some areas if required. We have permission to work regularly on Sundays for specific activities, such as tunnel construction within the tunnel cuttings, and for highways works in some areas. Further details can be found on the 'in your area' pages of the HS2 website.

## Construction update



### Activities near local road networks

We will have traffic management at several locations this winter, including:

- Periods of traffic lights near Southam on the A423 Banbury Road and at Kineton Road
- Extended 30mph zone on A425 in Southam, to ensure safety near the entry gate by the River Itchen viaduct during construction
- Occasional periods of traffic lights and some short road closures on the A361, in preparation for the realignment of the A361 over the Chipping Warden green tunnel
- A road closure on Wardington Road (also known as Edgcote Road), near Trafford Bridge by Chipping Warden where we are building the Edgcote viaduct
- Road closures and diversions near the Banbury Road overbridge, Boddington
- Deliveries of our precast tunnel sections will continue, delivered via Banbury M40, Junction 11 and via the A43 from the Northampton area

## Look ahead to 2025

Here are some of the activities that will be happening in 2025:

- In Southam, traffic management and temporary road closures to enable to construction of the Kineton Road overbridge and the A423 Banbury Road overbridge, in preparation for the bridges joining the current highways later in the year
- The new highway and bridge near Boddington will be connected to the current road network, requiring road closures in spring
- Commencement of the main earthworks for the Stoneton Lane green overbridge, requiring a two-year closure of Stoneton Lane
- Preparations and backfilling of earth for the realignment of the A361 over the Chipping Warden green tunnel
- The permanent closure of Culworth Road in Chipping Warden will take place toward the end of 2025
- Green tunnel construction near Thorpe Mandeville, requiring a longer closure of Banbury Road, with the Greatworth Temporary Road providing a diversion route



## Community News



### Southam

In the summer a team of EKFB volunteers along with some of our subcontractors

spent the day tidying up around St. James Church in Southam. The church is developing a community hub to host activities and events for the wider community. The team helped give the church a freshen up for it's new venture by painted the church doors, wooden structures and railings and tidied up the footpaths and churchyard.



Figure 8: Volunteers at St James Church, Southam

### Greatworth Primary School

This summer we continued our support for outdoor learning at the school. Following successful fundraising by the school parent teacher association, they were able to purchase a wooden building for the children to use. In readiness for the return to school in September. Our team came to help, spending a week levelling the ground, laying slabs and building the new outdoor classroom.



Figure 9: Outdoor learning space at Greatworth Primary School

### Priors Hardwick

This year EKFB donated defibrillators to local communities as well as assisted in providing refresher courses for first aid training, including the use of defibrillator for live saving emergencies. A defibrillator was donated to Priors Hardwick Parish Council and installed in the old telephone box in the village centre.



Figure 10: Defibrillator installed in Priors Hardwick



# Keeping you informed

We are committed to keeping you informed about work on HS2. This includes ensuring you know what to expect and when to expect it, as well as how we can help.

## Residents' Charter and Commissioner

The Residents' Charter is our promise to communicate as clearly as we possibly can with people who live along or near the HS2 route.

[www.gov.uk/government/publications/hs2-residents-charter](http://www.gov.uk/government/publications/hs2-residents-charter)

We also have an independent Residents' Commissioner whose job is to make sure we keep to the promises we make in the Charter and to keep it under constant review. Find reports at:

[www.gov.uk/government/collections/hs2-ltd-residents-commissioner](http://www.gov.uk/government/collections/hs2-ltd-residents-commissioner)

You can contact the Commissioner at: [residentscommissioner@hs2.org.uk](mailto:residentscommissioner@hs2.org.uk)

## Construction Commissioner

The Construction Commissioner's role is to mediate and monitor the way in which HS2 Ltd manages and responds to construction complaints. You can contact the Construction Commissioner by emailing: [complaints@hs2-cc.org.uk](mailto:complaints@hs2-cc.org.uk)

## Property and compensation

You can find out all about HS2 and properties along the line of route by visiting:

[www.gov.uk/government/collections/hs2-property](http://www.gov.uk/government/collections/hs2-property)

Find out if you're eligible for compensation at:

[www.gov.uk/claim-compensation-if-affected-by-hs2](http://www.gov.uk/claim-compensation-if-affected-by-hs2)

## Holding us to account

If you are unhappy for any reason you can make a complaint by contacting our HS2 Helpdesk team. For more details on our complaints process, please visit our website:

[www.hs2.org.uk/how-to-complain](http://www.hs2.org.uk/how-to-complain)

## Contact Us

Contact our HS2 Helpdesk team all day, every day of the year on:

 Freephone **08081 434 434**

 Minicom **08081 456 472**

@ Email **[HS2enquiries@hs2.org.uk](mailto:HS2enquiries@hs2.org.uk)**

Write to:

**FREEPOST**

**HS2 Community Engagement**

Website **[www.hs2.org.uk](http://www.hs2.org.uk)**

To keep up to date with what is happening in your local area, visit: **[www.HS2inyourarea.co.uk](http://www.HS2inyourarea.co.uk)**

**Please contact us if you'd like a free copy of this document in large print, Braille, audio or easy read. You can also contact us for help and information in a different language.**

HS2 Ltd is committed to protecting personal information. If you wish to know more about how we use your personal information please see our Privacy Notice <https://www.gov.uk/government/publications/high-speed-two-ltd-privacy-notice>

**Reference number: HS2-MW-EK-Ph1-Ar-Ce-C1-CR-47-09/11/2024**

High Speed Two (HS2) Limited, registered in England and Wales.

Registered office: Two Snowhill, Snow Hill Queensway, Birmingham B4 6GA.

Company registration number: 06791686. VAT registration number: 888 8512 56