

Contact our HS2 Helpdesk team on **08081 434 434**

HS2 Update

Chiltern Tunnel | Winter 2024

ALIGN
Working in
partnership with **HS2**

Chiltern tunnel and shafts, including works from South Heath to Leather Lane, Buckinghamshire, winter 2024

In July this year we began works to form the railway cutting between the Chiltern tunnel North Portal at South Heath and the area beyond Leather Lane, where our works meet and join with those of our neighbouring main works contractor, EKFB.

GMI/2 overbridge

We made rapid progress in the summer and early autumn this year on the foundation (piling) works for the overbridge which will take Public Right of Way (PRoW) GMI/2 over the HS2 railway line in South Heath. This will then connect with PRoW GMI/12.



An artist's impression of the future GMI/2 overbridge.



GMI/2 west platform after the completion of the piling works.

We are now starting the excavation of soil needed for the construction of the supporting concrete structures at each end of the bridge, known as abutments. This will be the focus of activity over the coming months in this area.



GMI/2 east platform works underway.

GMI/12 overbridge update

The main piling works for overbridge GMI/12 began in September. Eight out of the 12 piles will be completed this year with the remaining four scheduled for completion in early 2025. As works have started in earnest on this section, we have upgraded security fencing along our site boundary to ensure that members of the public are protected from any site traffic and activity.



An artist's impression of the future GMI/12 footbridge.

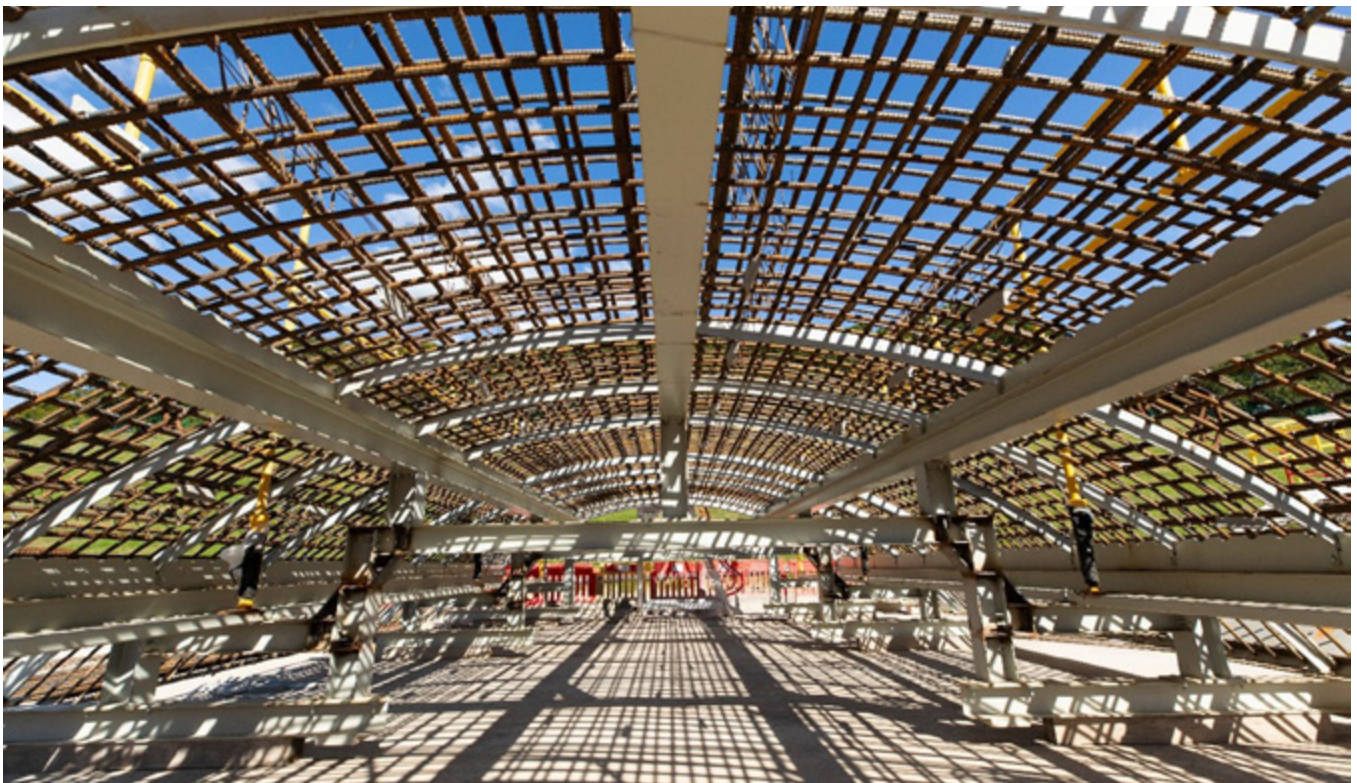
Works at Leather Lane, Buckinghamshire

Our traffic team recently removed overgrown vegetation along Leather Lane. This was carried out in early October under a temporary road closure. We used trimmers and hedge cutters to cut back overgrown grass and weeds, trim back hedges, and remove damaged or overhanging branches that had snapped during recent storms, to make the lane safer for road users.

We are currently progressing a new detailed design for the interface between Leather Lane and the railway after positive engagement with local community members. We expect to submit our final plans to Buckinghamshire Council in early 2025 and look forward to sharing the designs with the community at events in the area next year. The new designs aim to provide mitigation for local wildlife and preserve much of the existing character and nature of Leather Lane, which remains a key concern for local residents.

Porous portal works begin at North Portal, South Heath

Construction of the porous portals, the staggered entrance and exit at the northern end of the 10-mile long Chiltern tunnel, began in earnest in September with concrete pours taking place through September to form the first sections of the portal walls. A concrete batching plant has been installed and is supplying the concrete required to build the porous portals.



Metal formworks being assembled at the North Portal site to create the curved roof of one of the porous portals.

Chiltern Tunnel site progress updates

Little Missenden ventilation shaft

At Little Missenden ventilation shaft the connection between the vent shaft and the two tunnel bores has now progressed to the final stage of core drilling. The installation of zinc cladding on the headhouse is now being undertaken.



Installation of cladding on the headhouse at Little Missenden about to begin.

Amersham ventilation shaft

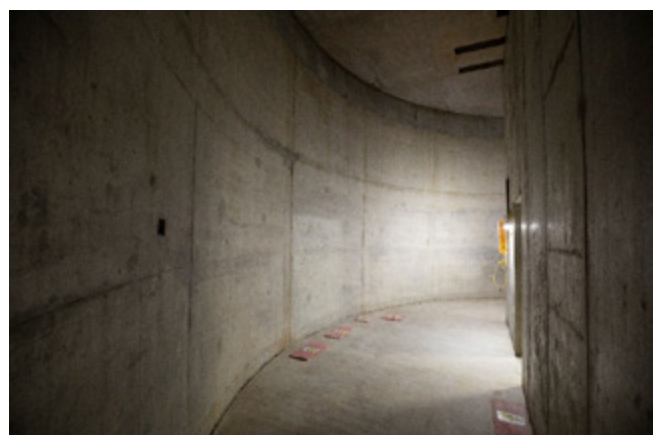
In the shaft, the works continue to create tunnel connections. On the surface above the vent shaft, a pre-cast boundary wall is being installed around the compound with over 80 of a total 197 segments having been placed to date.



A view from inside the basement structure of the ventilation shaft headhouse at Amersham

Chesham Road intervention shaft

The cladding works to the main building and Auto Transformer Station (ATS) buildings continue, with works ongoing until early 2025.



Chesham Road intervention shaft concrete slab finishing works underway.

Chalfont St Giles ventilation shaft

The works for the shaft and tunnel connections were completed in September. On the surface, our external works are continuing with filter drain repairs and the backfilling of earthworks around the vent shaft being undertaken to begin the restoration of the site.



An aerial photograph of the Chalfont St Giles compound from September 2024 showing the arrangement of buildings and installed zinc cladding.

Chalfont St Peter ventilation shaft

Above the shaft, zinc cladding is now fully installed on the walls of the main headhouse and on the plenum building, the auxiliary building which facilitates air circulation. We have now completed the external works to connect the water main from the firewater tank to the bellmouth of the access road.



Chalfont St Peter ventilation site as seen from the air. The temporary access road extends to the A413 to the left of the picture.

Keeping you informed

We are committed to keeping you informed about work on HS2. This includes ensuring you know what to expect and when to expect it, as well as how we can help you.

The Residents' Commissioner

The independent Residents' Commissioner oversees and monitors our commitments to you.

The commissioner's reports and our responses can be found at www.gov.uk/government/collections/hs2-ltd-residents-commissioner

The Residents' Commissioner makes sure we fulfil the commitments in the HS2 Community Engagement Strategy (<https://bit.ly/3oOA25j>).

The Residents' Commissioner can be contacted on: residentscommissioner@hs2.org.uk

Construction Commissioner

The independent Construction Commissioner regularly meets our Chief Executive Officer to raise any concerns or emerging trends across HS2.

The Construction Commissioner's role has been developed to monitor the way we manage and respond to construction complaints.

The commissioner mediates on disputes about construction, involving individuals and organisations, that we can't resolve. The commissioner advises members of the public about how to make a complaint about construction.

The Construction Commissioner can be contacted on: complaints@hs2-cc.org.uk

Property and compensation

You can find out about HS2 and properties along the route by visiting:

www.gov.uk/government/collections/hs2-property

Find out if you can claim compensation at:

www.gov.uk/claim-compensation-if-affected-by-hs2

Holding us to account

If you are unhappy for any reason you can make a complaint by contacting the HS2 Helpdesk. For more details on our complaints process, please visit:

www.hs2.org.uk/in-your-area/contact-us/how-to-complain/

Reference number: HS2-MW-Align-Ph1-Ar-Ce-C1-CR-50-23/05/2024

High Speed Two (HS2) Limited, registered in England and Wales.


Registered office: Two Snowhill, Snow Hill Queensway, Birmingham B4 6GA.

Company registration number: 06791686. VAT registration number: 888 8512 56

Contact us

Contact our HS2 Helpdesk team all day, every day of the year on:

 Freephone 08081 434 434

 Minicom 08081 456 472

 Email HS2enquiries@hs2.org.uk

Write to:
FREEPOST
HS2 Community Engagement

Website www.hs2.org.uk

To keep up to date with what is happening in your local area, visit:

Please contact us if you'd like a free copy of this document in large print, Braille, audio or 'easy read' format. You can also contact us for help and information in a different language.

HS2 Ltd is committed to protecting personal information. If you wish to know more about how we use your personal information please see our Privacy Notice: <https://www.gov.uk/government/publications/high-speed-two-ltd-privacy-notice>