



## Notice of temporary traffic lights on Stoneleigh Road and the closure of Stareton Lane, Stoneleigh

November 2024 | [www.hs2.org.uk](http://www.hs2.org.uk)

High Speed Two (HS2) is the new high speed railway for Britain. Balfour Beatty VINCI (BBV) is working in partnership with HS2 Ltd to build the new high-speed railway in your area.

### The work we will be doing

As we progress works on Stoneleigh Road Overbridge and the permanent road realignment, we will be installing parapets on the bridge structure and completing works on a plant crossing. To complete these works safely we will have temporary traffic lights on Stoneleigh Road and install a temporary closure on Stareton Lane.

### When these works will be taking place

The works will be carried out from Monday 2 December to Friday 6 December 2024. Our working hours will be 8am to 6pm.

### What to expect

Temporary traffic lights on Stoneleigh Road.

Stareton Lane will be temporarily closed and have a fully signed diversion route. For the diversion route, please see the map on page 2.

During these works, you may notice some minor disruptions to your journey times.

For details of the next HS2 drop in event in your local area, please see page 3.

**If you have a question about HS2 or our works, please contact our HS2 Helpdesk team on 08081 434 434 or email [hs2enquiries@hs2.org.uk](mailto:hs2enquiries@hs2.org.uk)**

### Duration of works

8am- 6pm

Monday 2 December to Friday 6 December 2024

### What to expect

A road closure on Stareton Lane with a fully signed diversion route

Temporary traffic lights and some minor disruption to your travel times

### What we will do

Update you on any changes at:  
[www.hs2inwarwickshire.co.uk](http://www.hs2inwarwickshire.co.uk)

Keep all sites safe and secure

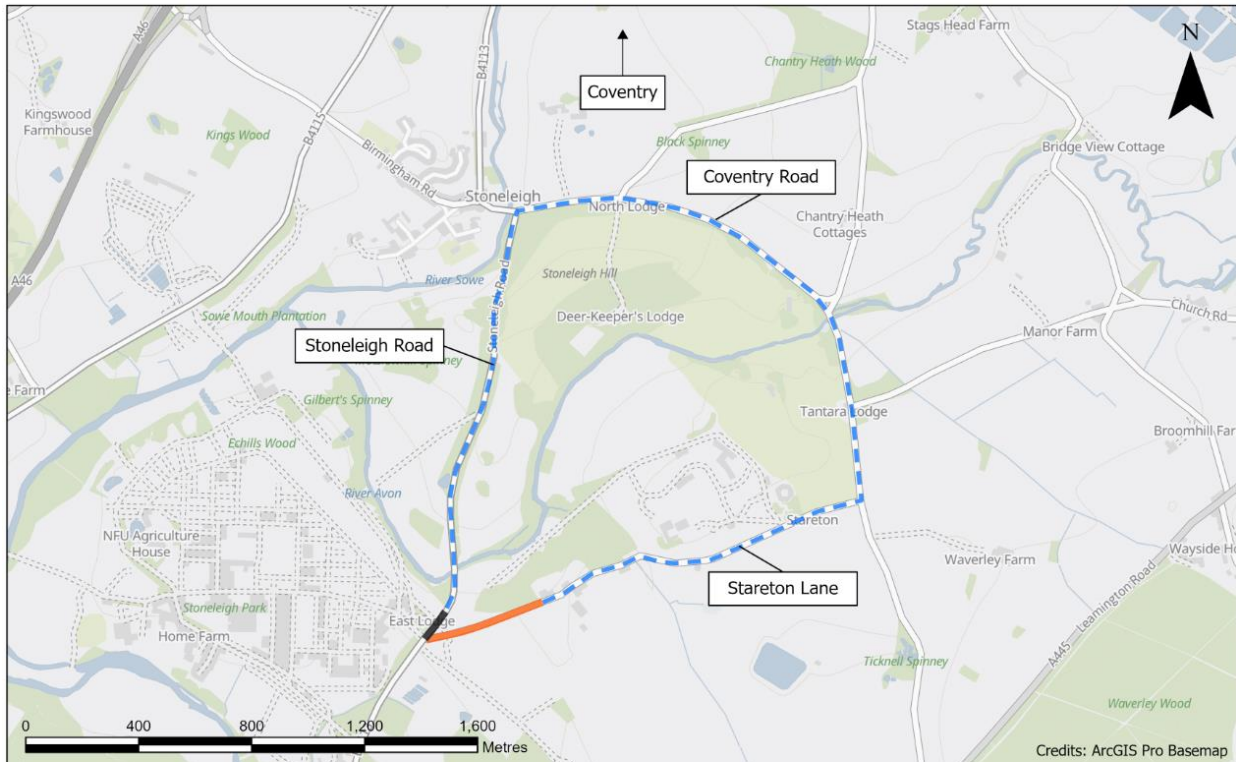
# Notice of temporary traffic lights on Stoneleigh Road and the closure of Stareton Lane, Stoneleigh

Notification



[www.hs2.org.uk](http://www.hs2.org.uk)

Map showing temporary traffic lights on Stoneleigh Road and the road closure on Stareton Road with the diversion route



— Road Closure

— Temporary Traffic Lights

Date: 14/11/2024

- - - Diversion

Scale: 1:15,000

Stareton Lane Road Closure 230711072633-BBVGIS-2479 LK\_EI

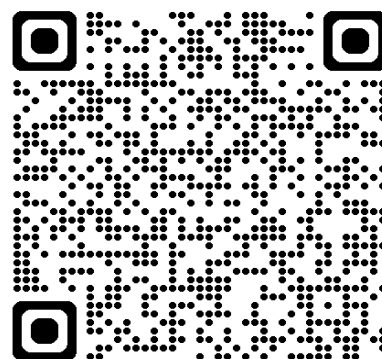
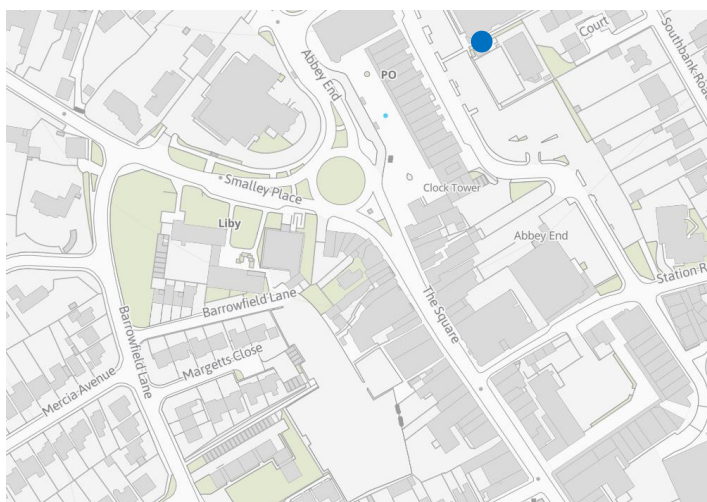
Contact our HS2 Helpdesk team on **08081 434 434**

# What else is happening in your area?

**We would like to invite you to a drop-in event for an update on the A46 and A429 Kenilworth Road works at The Kenilworth Centre on Wednesday 15 January 2025.**

High Speed Two (HS2) is the new high-speed railway for Britain. We will be holding an informal drop-in event at The Kenilworth Centre where you can come and chat with the team about upcoming works, with a focus on the A46 and the next phase of the A429.

**We will have specialists present on the day to answer your questions about the A46 and A429 works**



**Come and talk to us on Wednesday 15 January 2025 between 2pm and 7pm**

Address: The Kenilworth Centre, 65 Abbey End, Kenilworth, CV8 1QJ

Please register your interest using the QR code to the right or by visiting [www.hs2.org.uk/events/interest](http://www.hs2.org.uk/events/interest). We look forward to meeting you.

**Reference number: HS2-MW-BBV-Ph1-Ar-No-N1-Traf-13-11/12/2024**

Freephone **08081 434 434**

Minicom **08081 456 472**

Email [hs2enquiries@hs2.org.uk](mailto:hs2enquiries@hs2.org.uk)

Website [www.hs2.org.uk](http://www.hs2.org.uk)

To keep up to date with what is happening in your local area, visit:

[www.hs2inyourarea.co.uk](http://www.hs2inyourarea.co.uk)

Contact our HS2 Helpdesk team on **08081 434 434**

# Keeping you informed

We are committed to keeping you informed about work on HS2. This includes ensuring you know what to expect and when to expect it, as well as how we can help you.

## The Residents' Commissioner

The independent Residents' Commissioner oversees and monitors our commitments to you.

The commissioner's reports and our responses can be found at [www.gov.uk/government/collections/hs2-ltd-residents-commissioner](http://www.gov.uk/government/collections/hs2-ltd-residents-commissioner)

The Residents' Commissioner makes sure we fulfil the commitments in the HS2 Community Engagement Strategy (<https://bit.ly/3oOA25j>).

The Residents' Commissioner can be contacted on: [residentscommissioner@hs2.org.uk](mailto:residentscommissioner@hs2.org.uk)

## Construction Commissioner

The independent Construction Commissioner regularly meets our Chief Executive Officer to raise any concerns or emerging trends across HS2.

The Construction Commissioner's role has been developed to monitor the way we manage and respond to construction complaints.

The commissioner mediates on disputes about construction, involving individuals and organisations, that we can't resolve. The commissioner advises members of the public about how to make a complaint about construction.

The Construction Commissioner can be contacted on: [complaints@hs2-cc.org.uk](mailto:complaints@hs2-cc.org.uk)

## Property and compensation

You can find out about HS2 and properties along the route by visiting:

[www.gov.uk/government/collections/hs2-property](http://www.gov.uk/government/collections/hs2-property)

Find out if you can claim compensation at:

[www.gov.uk/claim-compensation-if-affected-by-hs2](http://www.gov.uk/claim-compensation-if-affected-by-hs2)

## Holding us to account

If you are unhappy for any reason you can make a complaint by contacting the HS2 Helpdesk. For more details on our complaints process, please visit: [www.hs2.org.uk/in-your-area/contact-us/how-to-complain/](http://www.hs2.org.uk/in-your-area/contact-us/how-to-complain/)

## Contact us

Contact our HS2 Helpdesk team all day, every day of the year on:

 Freephone **08081 434 434**

 Minicom **08081 456 472**

 Email **[HS2enquiries@hs2.org.uk](mailto:HS2enquiries@hs2.org.uk)**

Write to:

**FREEPOST**

**HS2 Community Engagement**

Website **[www.hs2.org.uk](http://www.hs2.org.uk)**

To keep up to date with what is happening in your local area, visit: **[www.HS2inyourarea.co.uk](http://www.HS2inyourarea.co.uk)**

**Please contact us if you'd like a free copy of this document in large print, Braille, audio or 'easy read' format. You can also contact us for help and information in a different language.**

HS2 Ltd is committed to protecting personal information. If you wish to know more about how we use your personal information please see our Privacy Notice: <https://www.gov.uk/government/publications/high-speed-two-ltd-privacy-notice>

**Reference number: HS2-MW-BBV-Ph1-Ar-No-N1-Traf-06-06/11/2024**

High Speed Two (HS2) Limited, registered in England and Wales.

Registered office: Two Snowhill, Snow Hill Queensway, Birmingham B4 6GA.

Company registration number: 06791686. VAT registration number: 888 8512 56