



# Notice of temporary closure of Rugby Road

November 2024 | [www.hs2.org.uk](http://www.hs2.org.uk)

High Speed Two (HS2) is the new high speed railway for Britain. Balfour Beatty VINCI (BBV) is working in partnership with HS2 Ltd to build the new high-speed railway in your area.

## The work we will be doing

As we progress works on the permanent realignment of Rugby Road, we will install a temporary road closure, for a short period of time, to remove and install new road markings.

## When we will do the works

The works will be carried on Saturday 30 November 2024 between 8am to 1.30pm.

## What to expect

The road closure will be in place along with a diversion route during these times. You may notice minor disruption to your journey time.

Please see the map on page 2 detailing the diversion route.

For details of the next HS2 Drop-in event in the local area, please see page 3.

**If you have a question about HS2 or our works, please contact our HS2 Helpdesk team on 08081 434 434 or email [hs2enquiries@hs2.org.uk](mailto:hs2enquiries@hs2.org.uk)**

## Duration of works

### Road closure

Saturday 30 November 2024

**8am – 1.30pm** the closure in place between these times

### What to expect

Our workforce can be on site up to 1 hour before work begins to set up the site and again afterwards to take down our work equipment

Some disruption to your journey time

Access to properties and for cyclists and pedestrians will be maintained

Fully signposted diversion in place

### What we will do

Update you on any changes at:  
[www.hs2inwarwickshire.co.uk](http://www.hs2inwarwickshire.co.uk)

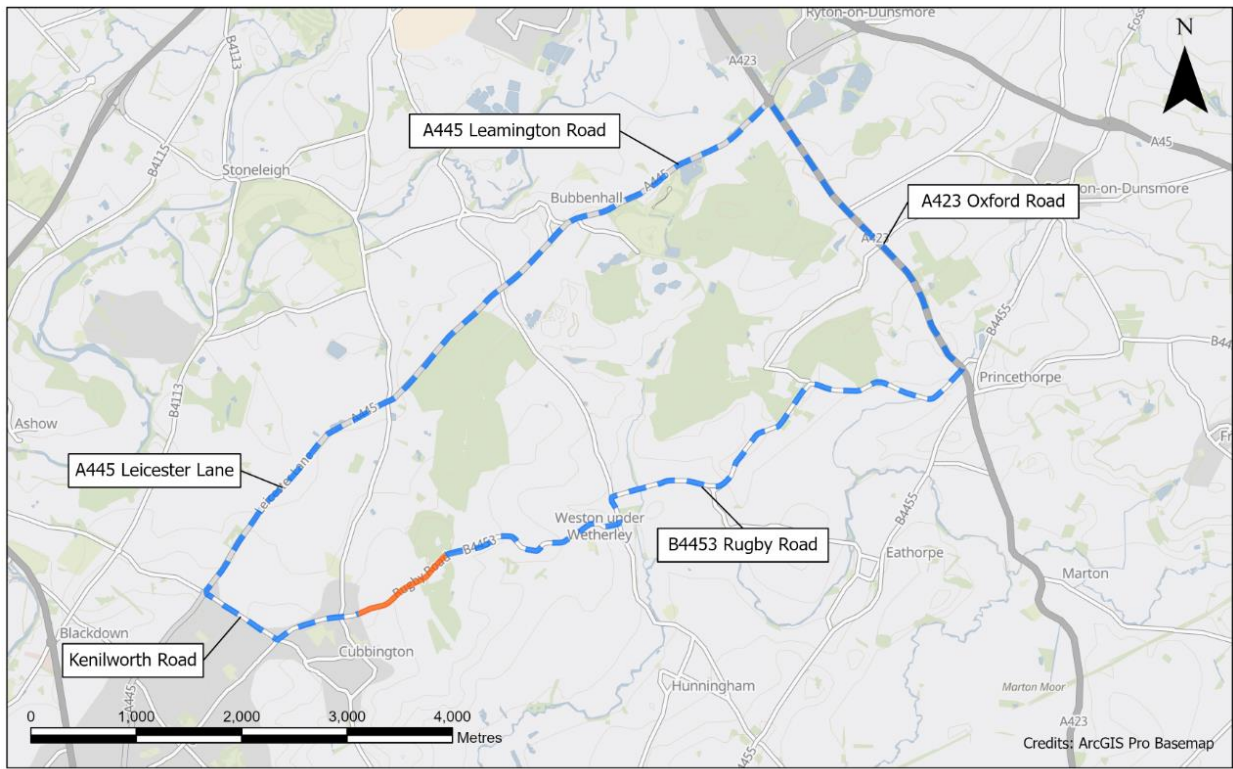
# Notice of temporary closure of Rugby Road

Notification



[www.hs2.org.uk](http://www.hs2.org.uk)

Map showing Rugby Road temporary closure with diversion route



- Closure
- Diversions

Date: 07/11/2024  
Scale: 1:40,000  
B4453 Rugby Road Closure INC000004864636 LK\_EI

# What else is happening in your area?

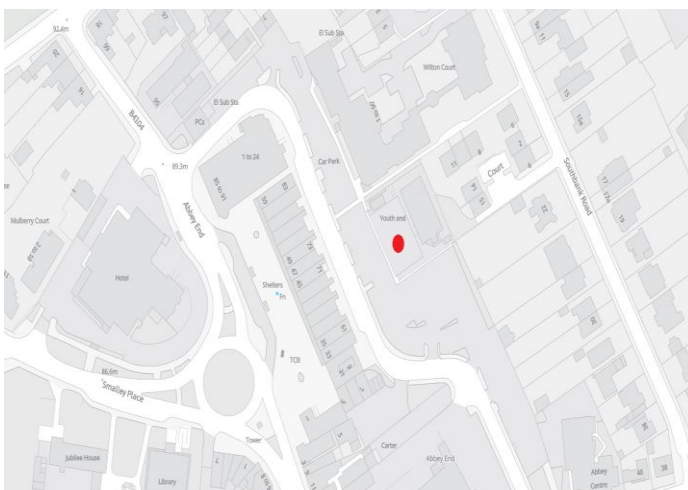
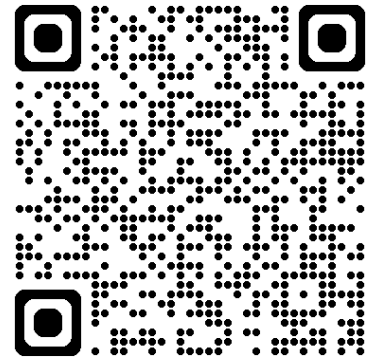
[www.hs2.org.uk](http://www.hs2.org.uk)

## We would like to invite you to a HS2 drop-in session at The Kenilworth Centre

High Speed Two (HS2) is the new high speed railway for Britain. We will be holding an informal drop-in event at the Kenilworth Centre where you can come and chat to your local Community Engagement team

**At this event you will be able to:**

- Find out more about project progress, construction and engineering work, traffic management and environment
- Talk to your local community engagement team about any queries you may have and community investment opportunities



**Come and talk to us on Thursday 12 December 2024**

**from 2pm to 7pm**

**Address: Abbey End Car Park, Kenilworth, Warwickshire**

**CV8 1QJ**

**We look forward to meeting you.**

# Keeping you informed

We are committed to keeping you informed about work on HS2. This includes ensuring you know what to expect and when to expect it, as well as how we can help you.

## The Residents' Commissioner

The independent Residents' Commissioner oversees and monitors our commitments to you.

The commissioner's reports and our responses can be found at [www.gov.uk/government/collections/hs2-ltd-residents-commissioner](http://www.gov.uk/government/collections/hs2-ltd-residents-commissioner)

The Residents' Commissioner makes sure we fulfil the commitments in the HS2 Community Engagement Strategy (<https://bit.ly/3oOA25j>).

The Residents' Commissioner can be contacted on: [residentscommissioner@hs2.org.uk](mailto:residentscommissioner@hs2.org.uk)

## Construction Commissioner

The independent Construction Commissioner regularly meets our Chief Executive Officer to raise any concerns or emerging trends across HS2.

The Construction Commissioner's role has been developed to monitor the way we manage and respond to construction complaints.

The commissioner mediates on disputes about construction, involving individuals and organisations, that we can't resolve. The commissioner advises members of the public about how to make a complaint about construction.

The Construction Commissioner can be contacted on: [complaints@hs2-cc.org.uk](mailto:complaints@hs2-cc.org.uk)

## Property and compensation

You can find out about HS2 and properties along the route by visiting:

[www.gov.uk/government/collections/hs2-property](http://www.gov.uk/government/collections/hs2-property)

Find out if you can claim compensation at:

[www.gov.uk/claim-compensation-if-affected-by-hs2](http://www.gov.uk/claim-compensation-if-affected-by-hs2)

## Holding us to account

If you are unhappy for any reason you can make a complaint by contacting the HS2 Helpdesk. For more details on our complaints process, please visit:

[www.hs2.org.uk/in-your-area/contact-us/how-to-complain/](http://www.hs2.org.uk/in-your-area/contact-us/how-to-complain/)

## Contact us

Contact our HS2 Helpdesk team all day, every day of the year on:

 Freephone **08081 434 434**

 Minicom **08081 456 472**

 Email **HS2enquiries@hs2.org.uk**

Write to:

**FREEPOST**

**HS2 Community Engagement**

Website **[www.hs2.org.uk](http://www.hs2.org.uk)**

To keep up to date with what is happening in your local area, visit:  
**[www.HS2inyourarea.co.uk](http://www.HS2inyourarea.co.uk)**

**Please contact us if you'd like a free copy of this document in large print, Braille, audio or 'easy read' format. You can also contact us for help and information in a different language.**

HS2 Ltd is committed to protecting personal information. If you wish to know more about how we use your personal information please see our Privacy Notice:

<https://www.gov.uk/government/publications/high-speed-two-ltd-privacy-notice>

**Reference number: HS2-MW-BBV-Ph1-Ar-No-N1-Traf-50-01/11/2024**

High Speed Two (HS2) Limited, registered in England and Wales.

Registered office: Two Snowhill, Snow Hill Queensway, Birmingham B4 6GA.

Company registration number: 06791686. VAT registration number: 888 8512 56