

# Introduction

Welcome to our information event to present the designs for submission of the Victoria Road HS2 structures in North Acton

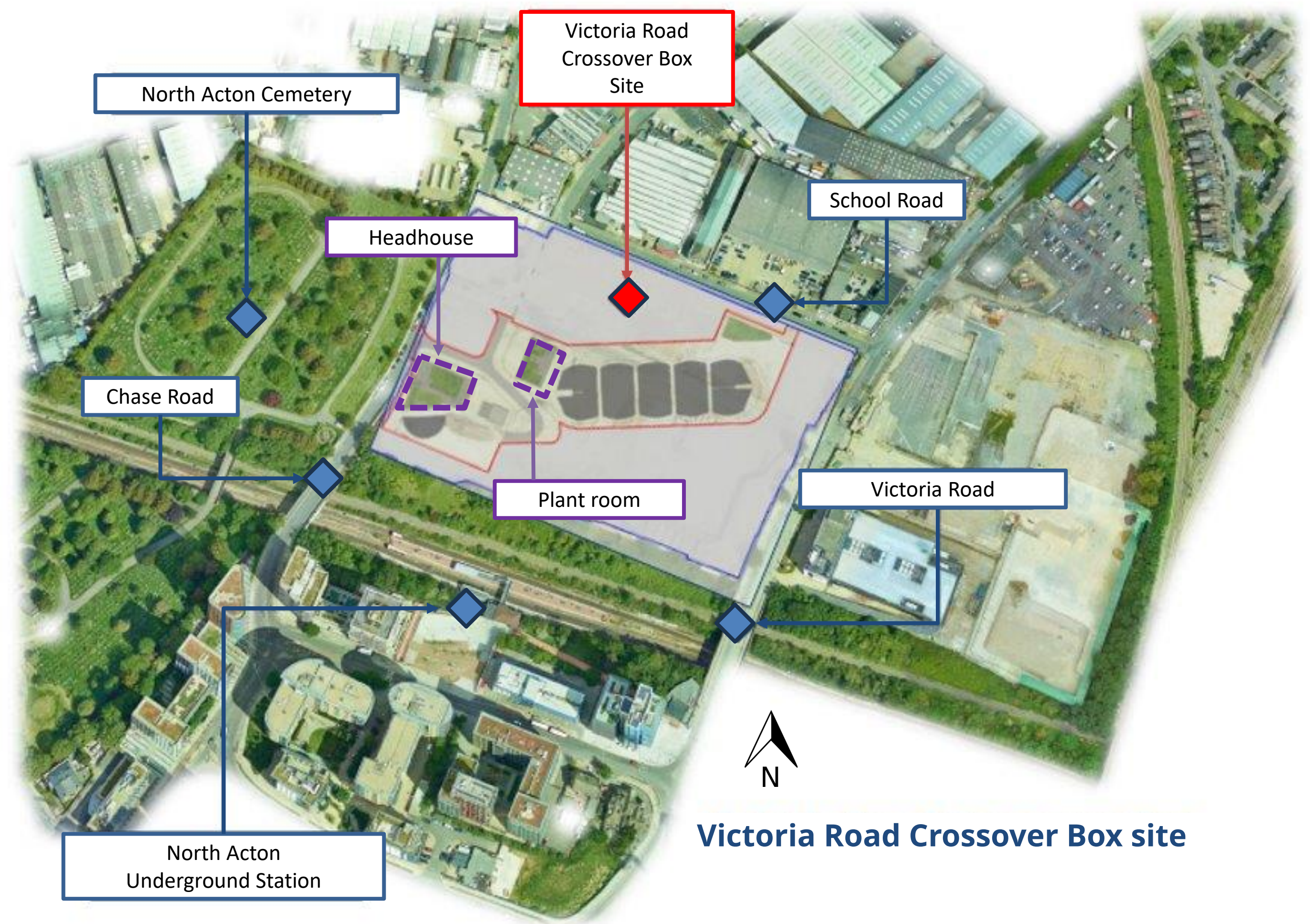
The following information boards will show you the final design proposals for the Victoria Road HS2 Headhouse and Plant room development in North Acton and the progress design progress.

The submission (*Schedule 17 application*) will be made to the **Old Oak and Park Royal Development Corporation** (OPDC) who are the local planning authority for determining planning submissions in the area.

## Where is the Victoria Road Headhouse and Plant room?

The Victoria Road Headhouse and Plant room lie within the Victoria Road Crossover Box site in the London Borough of Ealing.

The site is located north of North Acton Station and is bounded by Chase Road to the west, School Road to the north and Victoria Road to the east.



SKANSKA

COSTAIN

STRABAG

Working in  
partnership with

HS2



# What is a Headhouse and plant room?

A **headhouse** is the building on top of the vent shaft. It contains the fire control and ventilation systems for the railway tunnels below. The headhouse will also include the fan room. The vent shaft below connects the tunnels to the surface, serving to regulate air quality and temperature.

A **plant room** is a dedicated space where technical equipment is housed.

We are now seeking approval from OPDC for detailed design of **the headhouse and plant room buildings**.



*This is an indicative visualisation of the Victoria Road Crossover Box headhouse from the north*

SKANSKA

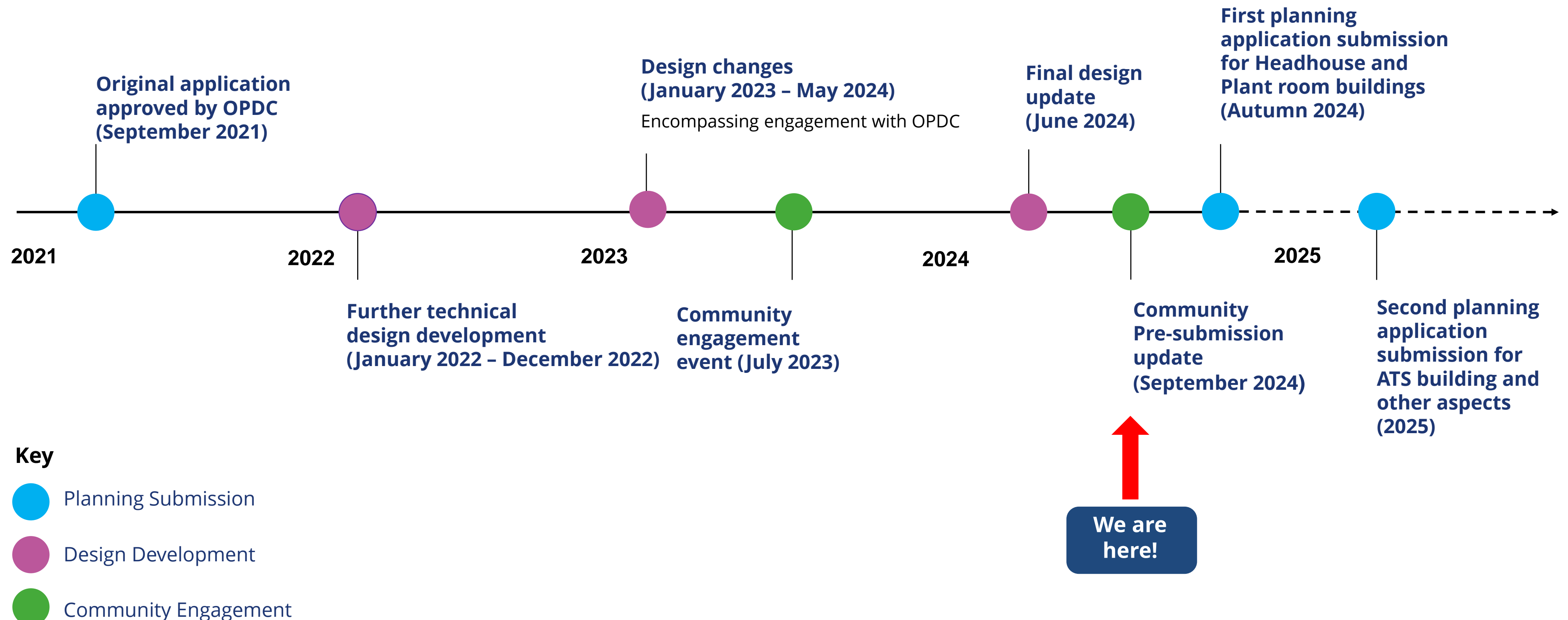


STRABAG

Working in  
partnership with

HS2

# Program timeline



To help navigate the boards, the colours on the key will be used on other boards to show their correlation to the program

- The previously presented scheme has now been **split into two applications** to allow for construction to progress, whilst allowing for design flexibility to be reflected in due course
- 1<sup>st</sup> Application will concern the headhouse building and the plant room structure
- 2<sup>nd</sup> Application will relate to the ATS building, walls and fences, earthworks, hard landscaping, road vehicle parks and external lighting.

SKANSKA



STRABAG

Working in partnership with

HS2



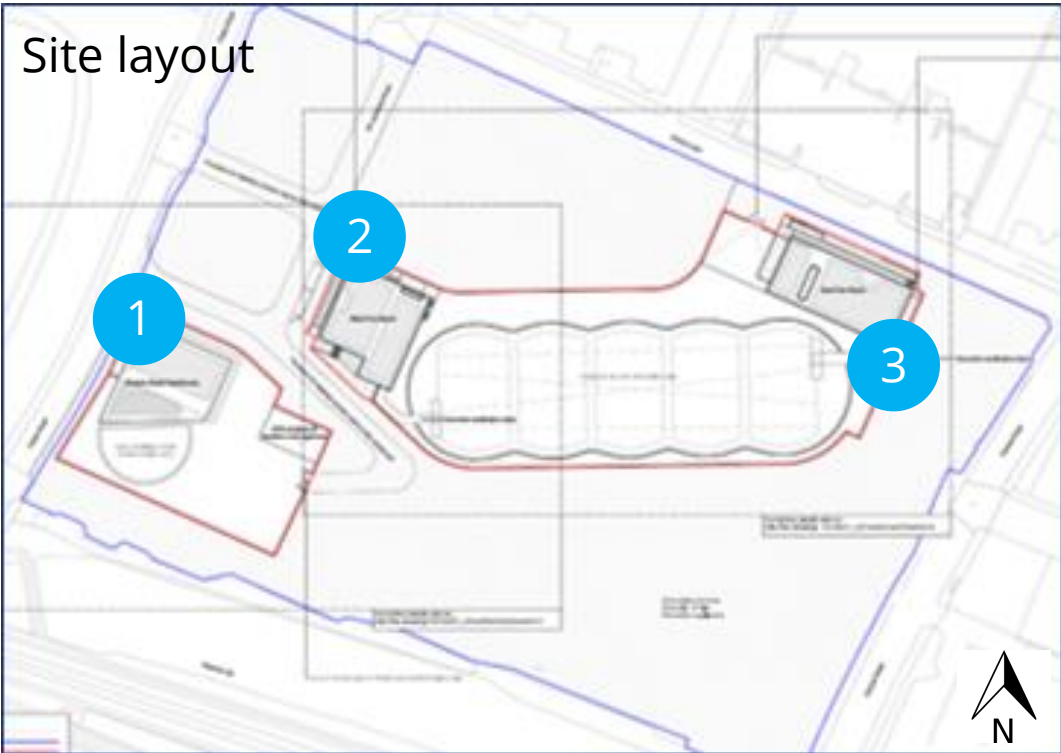
# Scheme Evolution ●

Approved scheme (2021)



1 Headhouse

The scheme was granted approval subject to details of the external appearance, materials, and finishes of the buildings being approved.



2 West Plant Room

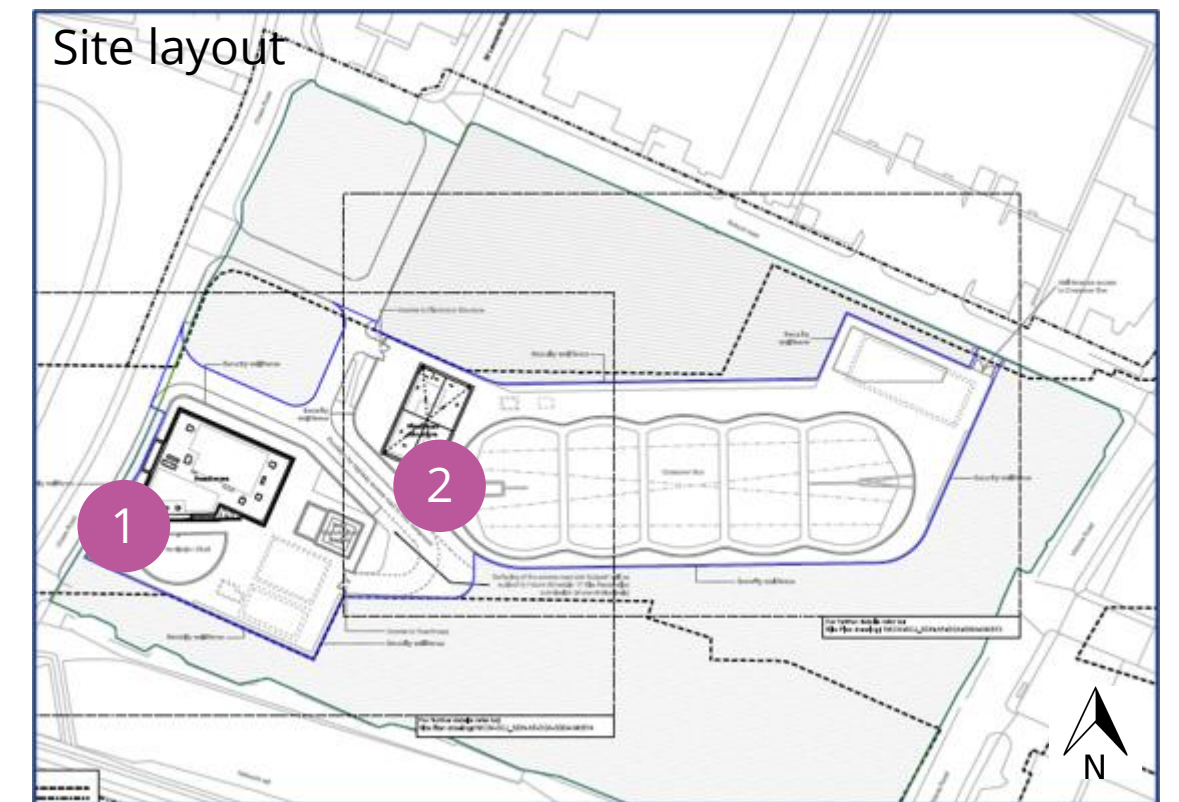


3 East Plant Room



# Further technical design development (2022) ●

- East plant room no longer required and west plant room size reduced (approx. 6m x 2m smaller).
- Headhouse footprint increased (approx. 1m x 7m wider)



1 Headhouse



2 Plant Room

SKANSKA



STRABAG

Working in  
partnership with

HS2

# Community Engagement

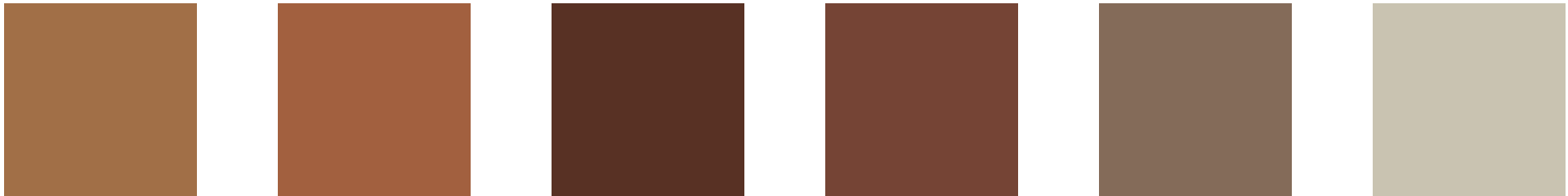
## Feedback from Community Engagement

| Community Engagement Feedback July 2023  | HS2 Submission Update September 2024  |
|--|---|
| Missed opportunity' to celebrate the area's cultural and industrial heritage                                 | The colour palette for the plant room, influenced by the local area's art deco heritage, introduces a sense of historical continuity and aesthetic resonance.<br><br>The design also reflects and blends in well with the characteristics of new developments around the OPDC area.   |
| Lack of contextuality or innovation  |   |
| Hoped to see design to be inspired by examples of precedents within the area, such as 1930's-style buildings |   |
| Lack of design rationale and narrative   | Noted the need for greater design development.<br><br>Anodised metal folds provide tactile texture to the façade but also creates an interplay of light and shadow, which helps to break down the building scale and activating the façade.<br><br>The materials we have chosen is of high quality and is chosen to meet the intended design life of the HS2 railway project. |
| Need for more architectural design interest and 'depth'  |   |
| Concerns expressed over the robustness and quality of materials  |   |
| Residents confirmed they are eager to see HS2 progress on this site  | The design and location of the boundary walls are currently still being developed in discussed with OPDC, and will be incorporated in a forthcoming Planning Application in 2025  |
| Brickwork variation to improve the visual interest of the wall   |   |
| Suggestion of wall shape following the caterpillar structure   |   |



# Local Design Context ●

Existing rail assets, infrastructure and brickworks from existing and demolished Art Deco buildings located in the area



Existing vernacular industrial typologies incorporating blue shades and varying metal corrugations



SKANSKA COSTAIN STRABAG Working in partnership with HS2



# Colour Evolution ●

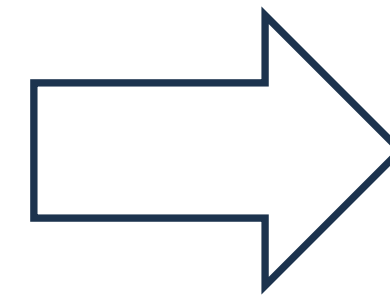
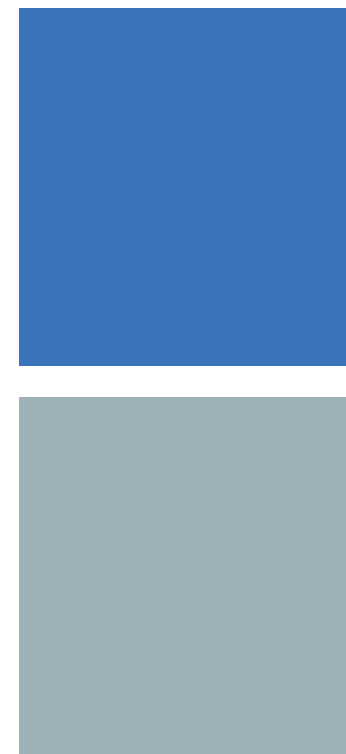
The **blue and red** colour, for the Headhouse and Plant room respectively, have been extracted from the predominant colours of the site analysis, in celebrating the area's **art-deco and industrial heritage**. The contrasting colours create a dialogue across the **different elements, spaces and functionalities**.



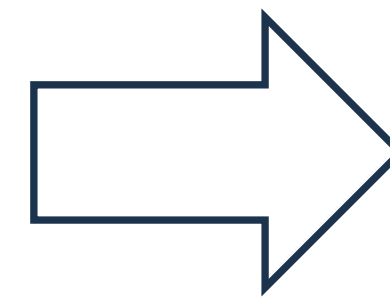
Existing vernacular industrial typologies



Existing rail assets, infrastructure and brickworks



Headhouse



Plant room

SKANSKA



STRABAG

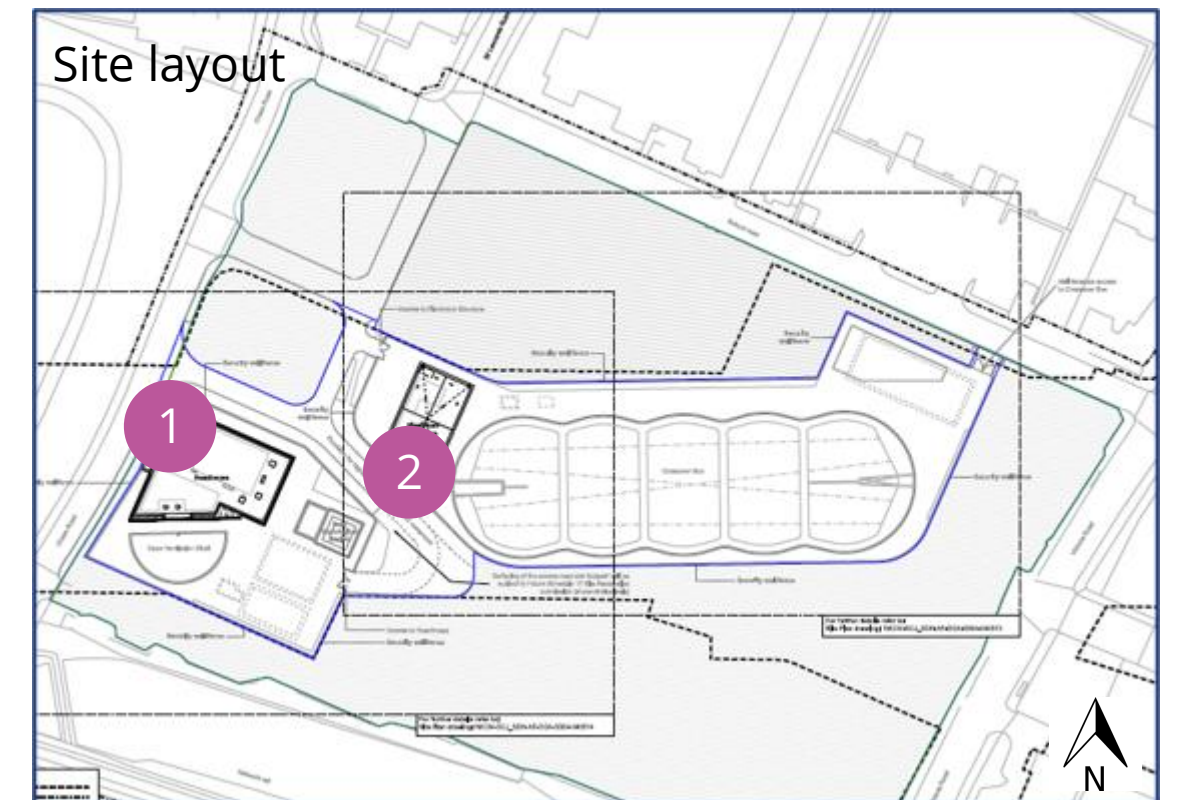
Working in  
partnership with

HS2



# Design Vision ●

A bold and contemporary interpretation of the **local industrial vernacular**, balancing the industrial heritage with **new modern perspectives**.



1 Headhouse



2 Plant Room

SKANSKA



STRABAG

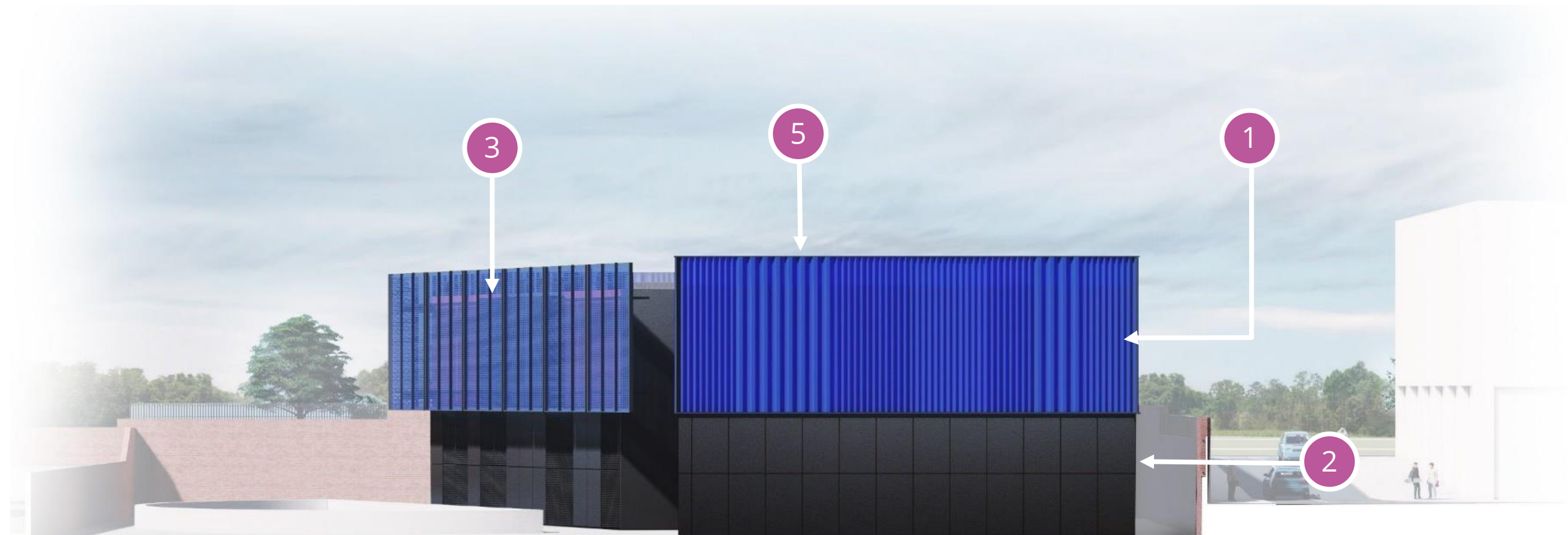
Working in  
partnership with

HS2

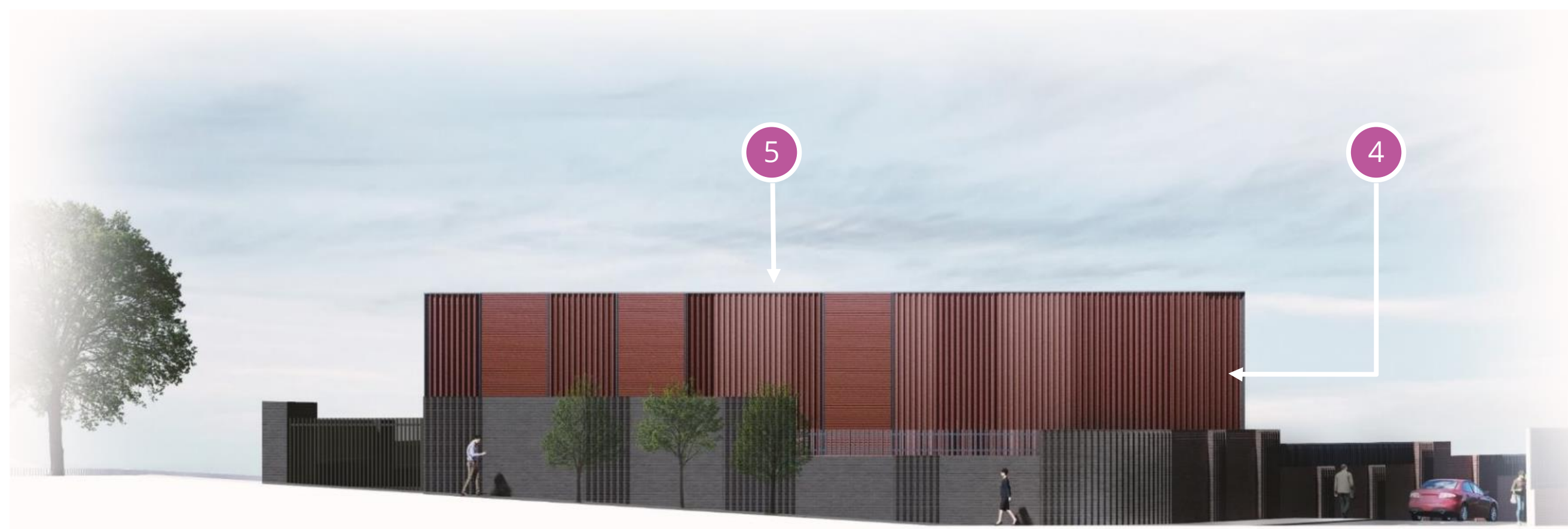


# Materials ●

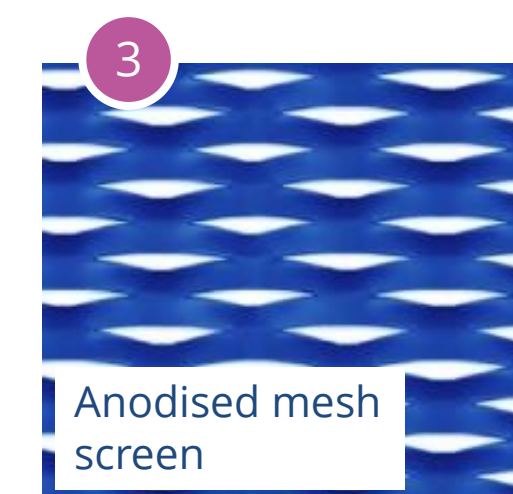
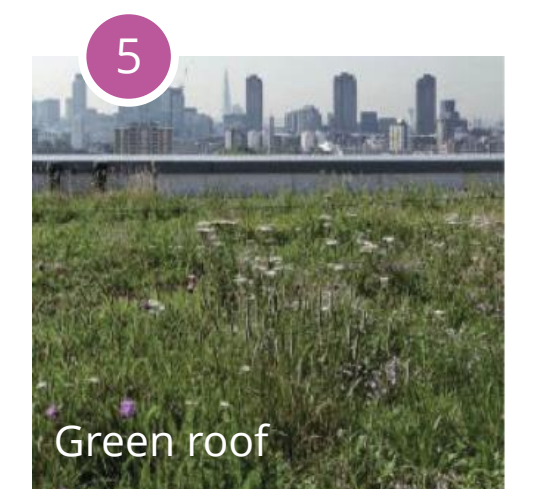
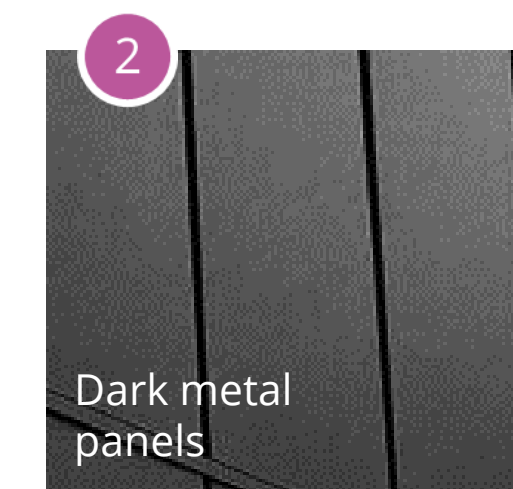
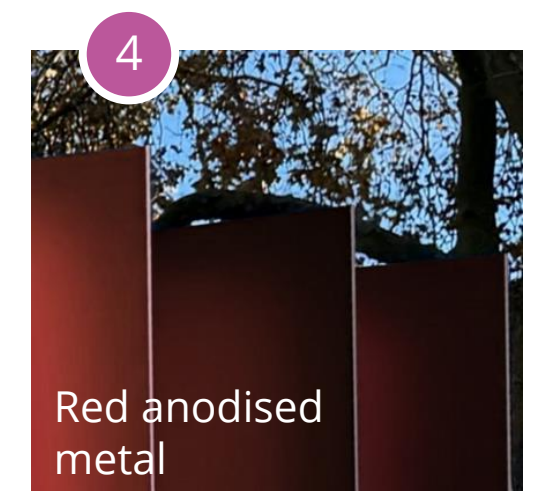
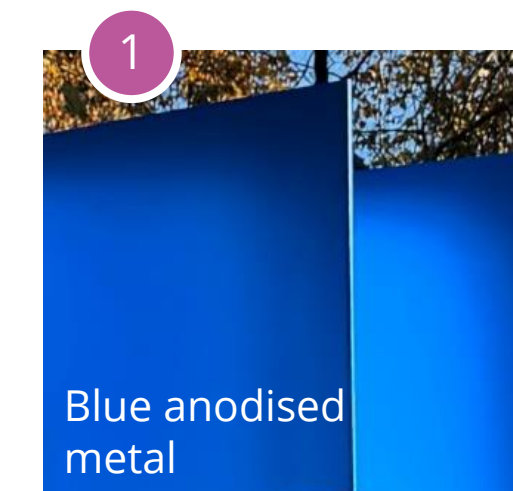
An anodised metal, which is resistant to weathering, has been selected to maintain the robustness of the proposal over time.



**Headhouse Building – East Elevation**



**Plant Room Building – West Elevation**



*\*Boundary Wall and Landscape elements are indicative only*

SKANSKA



STRABAG

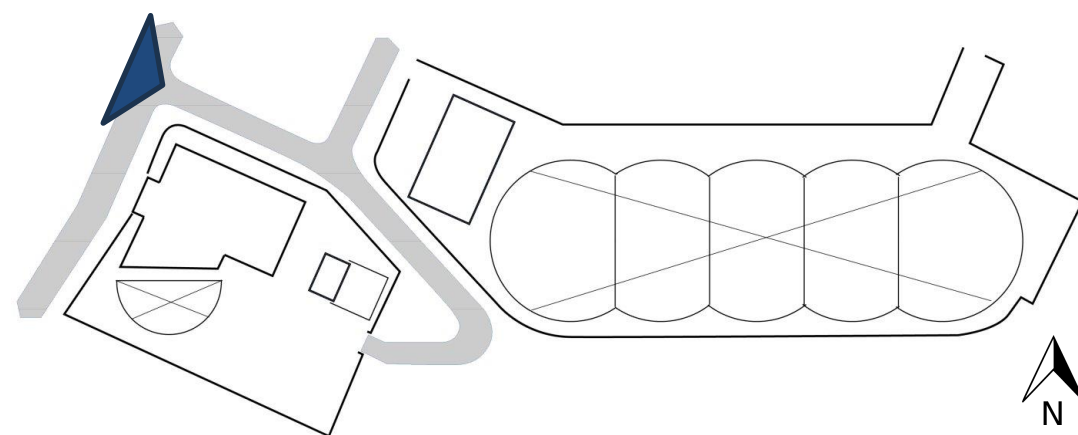
Working in  
partnership with

HS2



# Illustrative View #1

*\*Boundary Wall and Landscape elements are indicative only*



SKANSKA



STRABAG

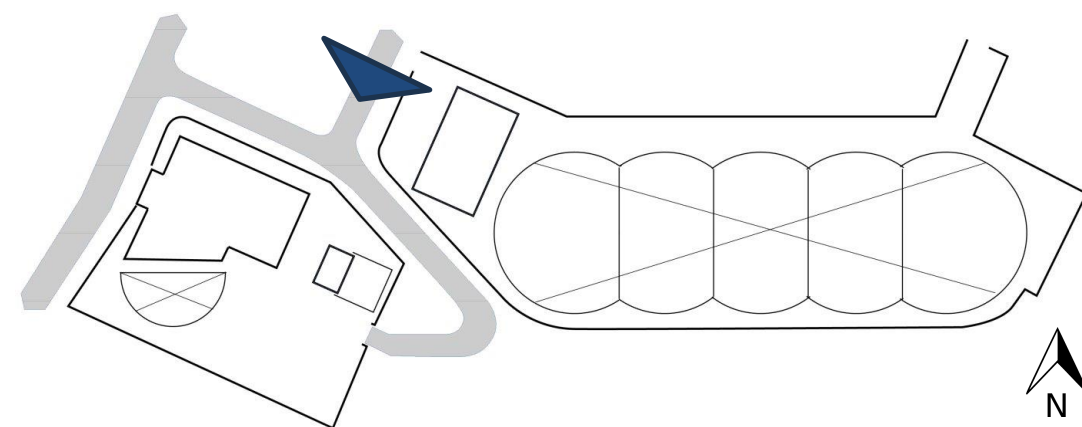
Working in  
partnership with

HS2



# Illustrative View #2

*\*Boundary Wall and Landscape elements are indicative only*



SKANSKA



STRABAG

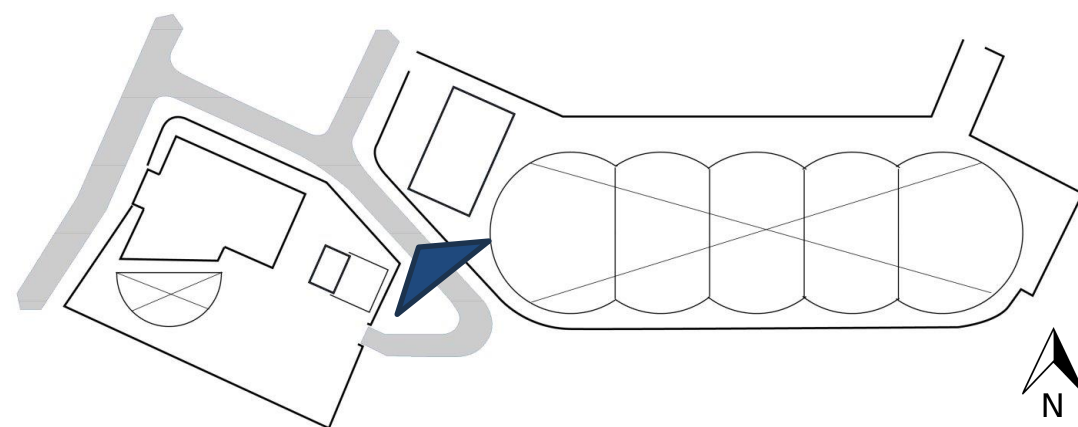
Working in  
partnership with

HS2



# Illustrative View #3

*\*Boundary Wall and Landscape elements are indicative only*



SKANSKA



STRABAG

Working in  
partnership with

HS2



# HS2 Helpdesk

For all enquiries, compliments or complaints please contact the HS2 Helpdesk

- Freephone **08081 434 434**
- Email [HS2enquiries@hs2.org.uk](mailto:HS2enquiries@hs2.org.uk)

We also encourage you to complete our HS2 event feedback form. Please scan the code with your phone's camera or QR code reader to open the form in a web page

You can sign up to receive updates about HS2 works in your local area at [www.hs2inyourarea.co.uk](http://www.hs2inyourarea.co.uk)



SKANSKA



STRABAG

Working in  
partnership with

HS2