



Notice of lane and footpath closure on Victoria Road

September 2024 | www.hs2.org.uk

High Speed Two (HS2) is the new high speed railway for Britain.

Lane and footpath closure on Victoria Road

Between **23 September and 4 October 2024**, we will close a section of lane and footpath on Victoria Road to carry out construction works. Please see plans on the following page.

The closures are needed to safely accommodate substation works, which include excavations, hoarding removal, concreting and fence installation. The works will be carried out in two phases.

How does this affect you?

You might hear increased noise levels during excavation works (Phase 2). We will use noise blankets during this period to reduce the impact to the community.

We will implement a two-way traffic system to manage traffic safely and introduce a safe walking route for pedestrians.

During these works we will also need to temporarily suspend bus stops A, B (towards Willesden Junction) and bus stop - School Road (towards Acton) on Victoria Road.

The nearest alternative bus stops towards Willesden Junction and Acton are the North Acton Station stops on Victoria Road.

We apologise for any inconvenience these works may cause.

If you have a question about HS2 or our works, please contact our HS2 Helpdesk team on 08081 434 434 or email hs2enquiries@hs2.org.uk

Duration of works

23 September to 4 October 2024

Working hours

8am to 6pm Monday to Friday and 8am to 1pm on Saturdays

What to expect

Section of lane and footpath closure on Victoria Road

Traffic management in place including two-way traffic signals

Pedestrian diversion route

Temporary bus stop closures (see main text)

Increased noise during excavation works

What we will do

Monitor our working methods to keep disruption to a minimum

Dates mentioned in this notification may change

We will continue to provide updates about our works at HS2.org.uk/in-your-area/

Notice of lane and footway closure on Victoria Road

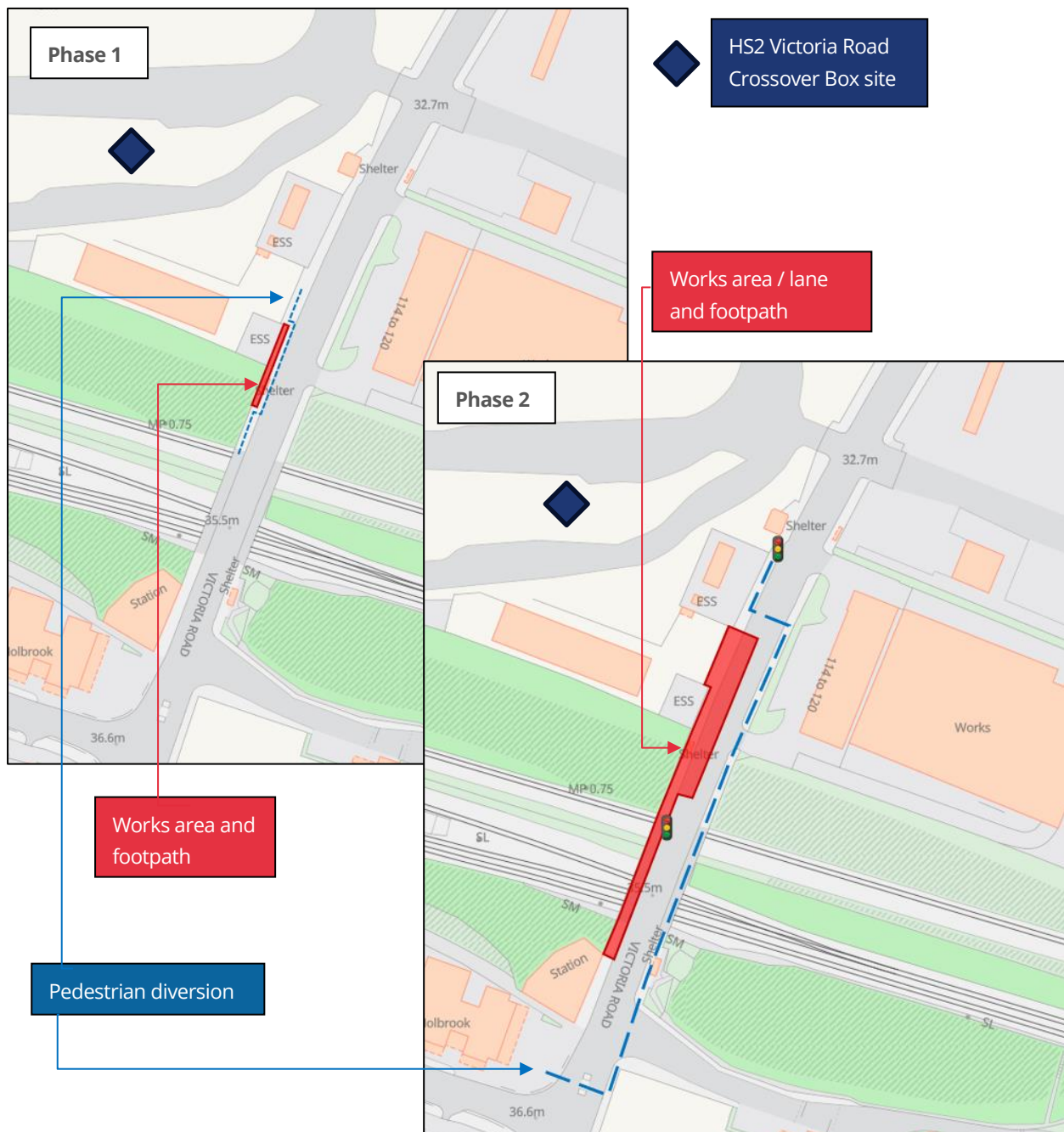
Notification



www.hs2.org.uk

Map of work on Victoria Road

Please see below the two phases of works on Victoria Road showing the work area and pedestrian diversion.



Contact our HS2 Helpdesk team on **08081 434 434**

What else is happening in your area?

www.hs2.org.uk

Contact our HS2 Helpdesk team

Our team is here to listen and respond to your enquiry, complaint or feedback to help us be a good neighbour.

You can contact our Helpdesk team all day, every day of the year on:

Freephone: **08081 434 434**

Minicom: **08081 456 472**

Email: hs2enquiries@hs2.org.uk

Keep up-to-date with your local community website

To find out more about what's happening in your area and receive regular email updates, you can sign up to our local community websites at: www.hs2inyourarea.co.uk.

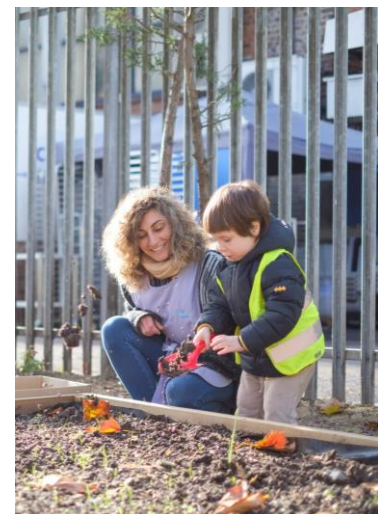
About our Community and Business Funds

We are offering two funds that are available to local communities and businesses between the West Midlands and London, to help with the disruption caused by our construction work. These are the Community and Environment Fund (CEF) and the Business and Local Economy Fund (BLEF).

The CEF is designed to give communities the opportunity to share in the benefits of HS2. It is an allocated fund that communities are able to apply for, to help to support local projects that aim to improve their local area.

The BLEF is designed to support local economies that may be disrupted by the construction of HS2. BLEF grants are for local business support organisations and local authorities to help maintain business activity in local communities.

For more information about each of these funds, including how to apply, please visit: <https://www.groundwork.org.uk/hs2funds>



Keeping you informed

We are committed to keeping you informed about work on HS2. This includes ensuring you know what to expect and when to expect it, as well as how we can help you.

The Residents' Commissioner

The independent Residents' Commissioner oversees and monitors our commitments to you.

The commissioner's reports and our responses can be found at www.gov.uk/government/collections/hs2-ltd-residents-commissioner

The Residents' Commissioner makes sure we fulfil the commitments in the HS2 Community Engagement Strategy (<https://bit.ly/3oOA25j>).

The Residents' Commissioner can be contacted on: residentscommissioner@hs2.org.uk

Construction Commissioner

The independent Construction Commissioner regularly meets our Chief Executive Officer to raise any concerns or emerging trends across HS2.

The Construction Commissioner's role has been developed to monitor the way we manage and respond to construction complaints.

The commissioner mediates on disputes about construction, involving individuals and organisations, that we can't resolve. The commissioner advises members of the public about how to make a complaint about construction.

The Construction Commissioner can be contacted on: complaints@hs2-cc.org.uk

Property and compensation

You can find out about HS2 and properties along the route by visiting:

www.gov.uk/government/collections/hs2-property

Find out if you can claim compensation at:

www.gov.uk/claim-compensation-if-affected-by-hs2

Holding us to account

If you are unhappy for any reason you can make a complaint by contacting the HS2 Helpdesk. For more details on our complaints process, please visit:

www.hs2.org.uk/in-your-area/contact-us/how-to-complain/

Contact us

Contact our HS2 Helpdesk team all day, every day of the year on:

 Freephone **08081 434 434**

 Minicom **08081 456 472**

 Email **HS2enquiries@hs2.org.uk**

Write to:

FREEPOST

HS2 Community Engagement

Website **www.hs2.org.uk**

To keep up to date with what is happening in your local area, visit: **www.HS2inyourarea.co.uk**

Please contact us if you'd like a free copy of this document in large print, Braille, audio or 'easy read' format. You can also contact us for help and information in a different language.

HS2 Ltd is committed to protecting personal information. If you wish to know more about how we use your personal information please see our Privacy Notice:

<https://www.gov.uk/government/publications/high-speed-two-ltd-privacy-notice>

Reference number: HS2-EW-SCS-Ph1-Ar-So-S2 -Prog Works-1-04/09/24

High Speed Two (HS2) Limited, registered in England and Wales.

Registered office: Two Snowhill, Snow Hill Queensway, Birmingham B4 6GA.

Company registration number: 06791686. VAT registration number: 888 8512 56